

GHANA METEOROLOGICAL AGENCY



HEADQUARTERS, LEGON ACCRA.
37 TRINITY ROAD, EAST LEGON
P.O.BOX LG 87, LEGON, ACCRA-GHANA

Agrometeorological Bulletin No.17, Dekad 2, June (11 – 20) 2017 *GMET/AGROMET/230617* *FORM 910*

SUMMARY:

The second dekad of agrometeorological bulletin of June, 2017 is presented in this edition. Most parts of the country recorded significant rainfall amounts. Dunkwa with the highest amount of rainfall for the second dekad received 322mm of rain. Rainfall distribution across the country was high (2-8 rain-days). Every part of the country received rainfall. Most parts of the country experienced surplus rainfall anomaly. The temperature was fair across the country and the highest maximum temperature was recorded at Navrongo (33.0 °C) while, the lowest minimum temperature across the country was observed at Abetifi (21.2°C).

1.0 RAINFALL TRENDS

1.1 Rainfall Amount

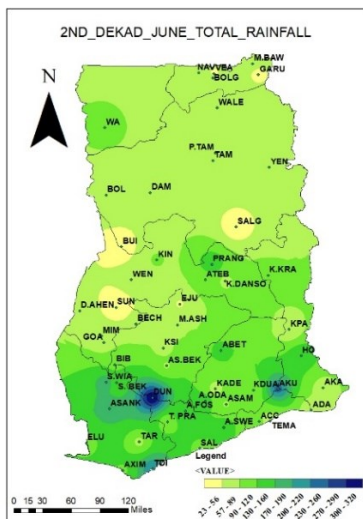


Fig 1: Rainfall Amount

Fig 1 shows the rainfall received across the country and reveals that most parts of the country recorded between 23mm to 160mm of rain. The highest amount of rainfall of about 322mm of was recorded at Dunkwa. Generally, rainfall was distributed fairly in the entire country

1.2 Number of Rainy Days

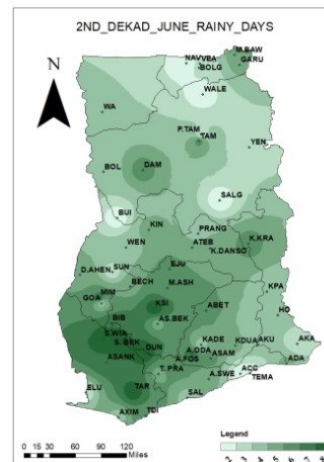


Fig 3: Rainy Days

Fig 3 shows the distribution of rainfall across the country and revealed that some stations such as Bui, Accra, Tema, Salaga, Walewale and Navrongo received 2 days of rainfall. Kumasi, Sefwi-Bekwai, Tarkwa, Dunkwa and Sefwi-Wiawso received the most number of days, 8 days of rainfall. Generally rainfall distribution highly favoured crop yield.

1.3 Rainfall Anomaly

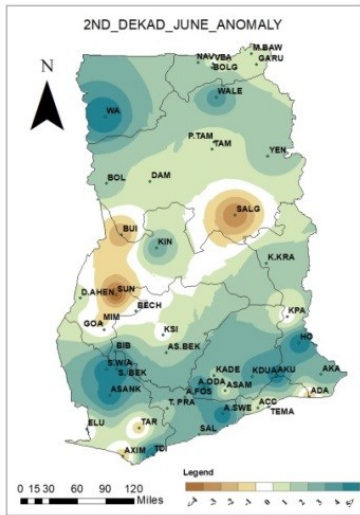


Fig 1: Rainfall Anomaly

The rainfall anomaly during the 2nd dekad indicates that surplus rainfall anomaly was recorded in most parts of the country. Tarkwa, Bui, Sunyani and Salaga recorded a deficit. Some few stations like Kpando, Kumasi, Asamankese and Goaso remained normal.

2.0 TEMPERATURE TRENDS

2.1 Mean Maximum Temperature

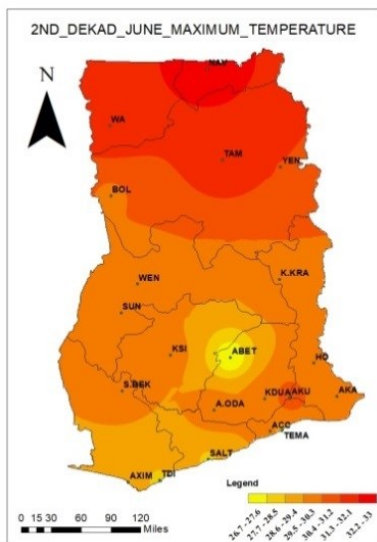


Fig 4: Maximum Temperature

Fig 4 reveals Abetifi recording the lowest maximum temperature of 26.7 °C while Navrongo recording the highest maximum temperature of 33.0 °C.

2.2 Mean Minimum Temperature

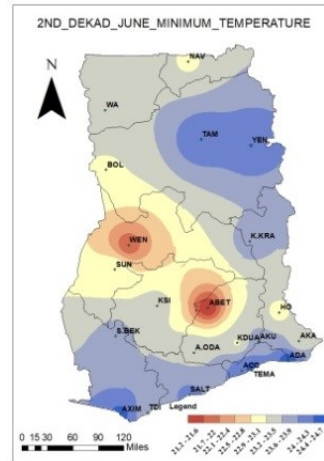


Fig 5: Minimum Temperature

Fig 5 shows Abetifi recording the lowest minimum temperature of 21.2 °C while Ada recorded the highest with a minimum temperature of 24.7°C.

2.3 Temperature Graph

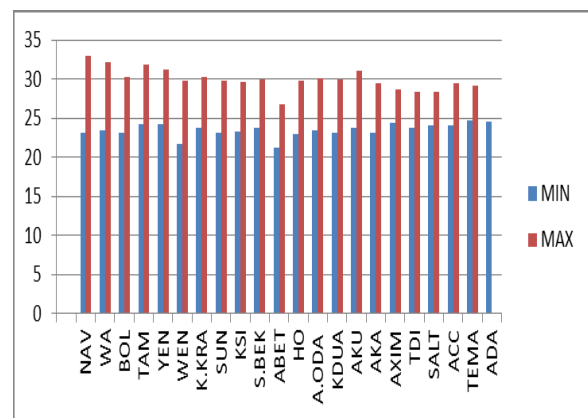


Fig 6: Temperature Distribution

Fig 6 showed the temperature distribution across the country and reveals the highest temperature recorded at Navrongo and the lowest at Abetifi.

3.0 Weather/ Agricultural Outlook for 2nd dekad (11-20), June 2017.

3.1 Weather Outlook

The Inter-Tropical Boundary (ITB) is expected to range between 12.5°N to 17.0°N.

The atmosphere over the country will realize moisture influx extending over the entire country. Coastal and middle Ghana may experience scattered thunderstorms at

the beginning of the next dekad with northern Ghana to expect isolated thunderstorms.

TABLE OF STATIONS

ABBREVIATION	STATION
A. FOSU	Assin Fosu
A. ODA	Akim Oda
A. SWE	Agona Swedru
ABET	Abetifi
ACC	Accra
ADA	Ada
AKATSI	Akatsi
AS. BEK	Ashanti Bekwai
ASAM	Asamankese
ASANKRA	Asankranga
ATEB	Atebubu
AXIM	Axim
BECH	Bechem
BIBIA	Bibiani
BOLE	Bole
BOLG	Bolgatanga
BUI	Bui
D. AHEN	Dormaa Ahenkro

DAM	Damango
DUNK	Dunkwa
EJURA	Ejura
ELUB	Elubo
GARU	Garu
GOA	Goaso
HO	Ho
K. DANSO	Kwame Danso
K. KRA	Kete-Krachi
KADE	Kade
KDUA	Koforidua
KINT	Kintampo
KPAN	Kpando
KSI	Kumasi
M. ASH	Mampong Ashanti
M. BAW	Manga Bawku
MIM	Mim
NAV	Navrongo
NKORA	Nkoranza

P. TAM	Pong Tamale
PRANG	Prang
S. BEK	Sefwi Bekwai
S. WIA	Sefwi Wiawso
SAL	Saltpond
SALG	Salaga
SUN	Sunyani
T. PRASO	Twifo Praso
TAM	Tamale
TAR	Tarkwa
TDI	Takoradi
TEMA	Tema
VEA	Vea Dam
WA	Wa
WALE	Wale Wale
WEN	Wenchi
YEN	Yendi
ZUA	Zuarungu

Kindly send feedback to:
The Director General
Ghana Meteorological Agency
P.O.Box Lg 87, Legon, Accra-Ghana.
Website: www.meteo.gov.gh
Phone: 0307010019

Website: www.meteo.gov.gh

Tel: 0307010019

Email: info@meteo.gov.gh



: @GhanaMet



: Ghana Meteorological Agency (GMet)