

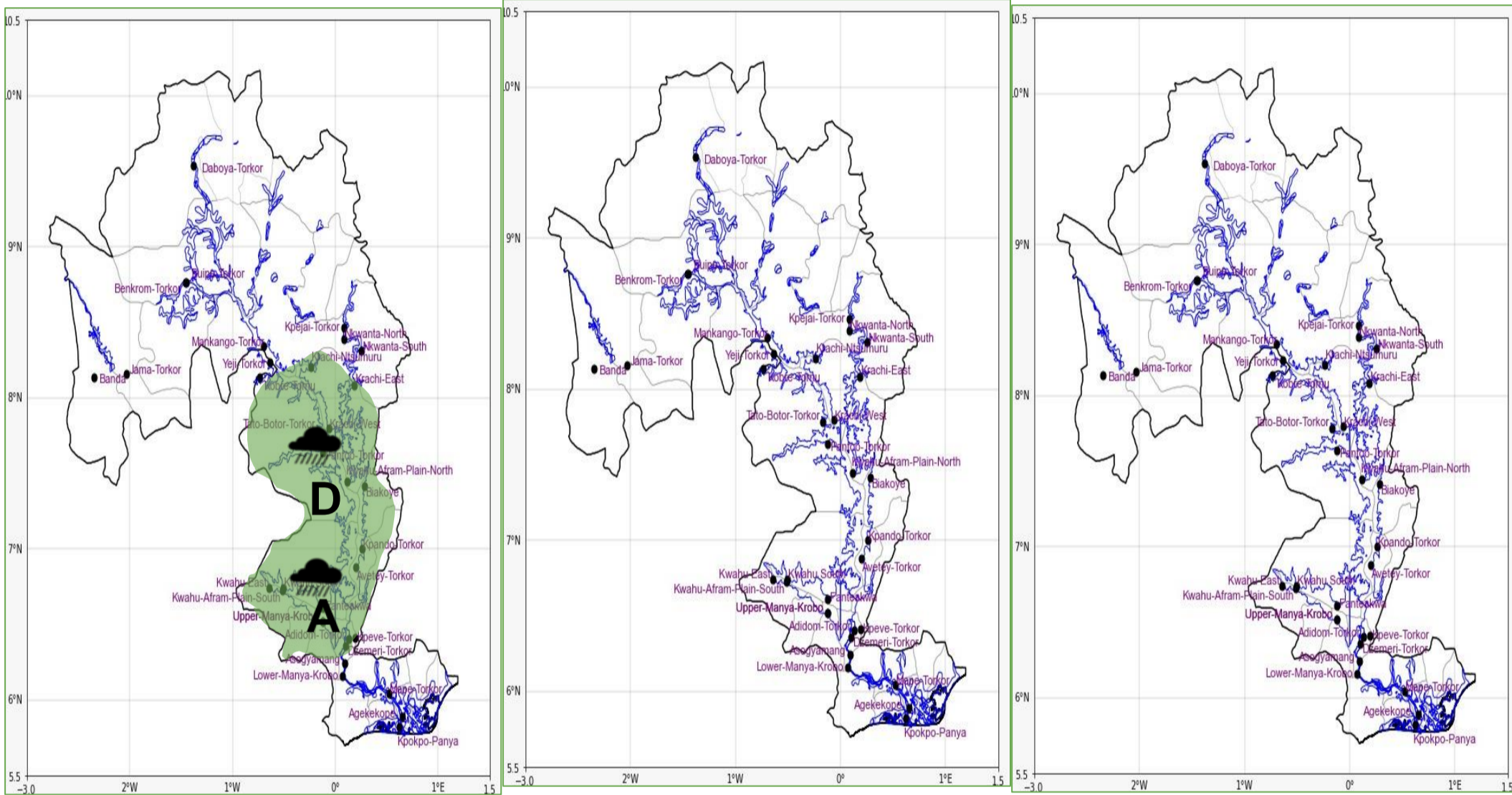


INLAND WATER IMPACT-BASED FORECAST

WEATHER SUMMARY

Mostly cloudy weather conditions are expected to persist throughout the forecast period. However, isolated rains of varying intensities are expected to persist with a 40-60% chance, with relatively strong winds and possible thunderstorms expected across the lake and its environs this evening.

EVENING (09/04/2026)	MORNING (10/04/2026)	AFTERNOON (10/04/2026)
----------------------	----------------------	------------------------



Date
09/04/2026
Time Issued
4:00 PM
Valid From
06:00 PM
Nowcasting Risk
Take Action
Be aware
Low risk
No risk

Weather Forecast Risk Table				
Likelihood ↑	High (>60%)	G	H	I
	Medium (40%-60%)	D	E	F
	Low (<40%)	A	B	C
		Low	Medium	High
		Impact →		

Time	Surface Wind	Visibility	Temperature
12 hours	S/SW 05 Max 20 kt	(4 – 10) km	(23 – 35) °C
24 hours	S/SE 05 Max 20 kt	(4 – 10) km	(23 – 38) °C