

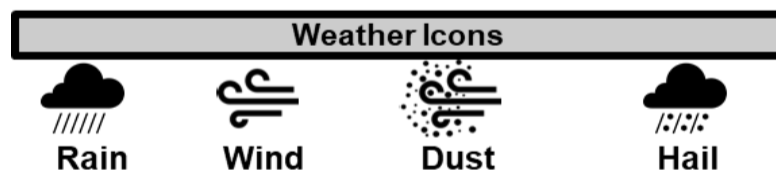
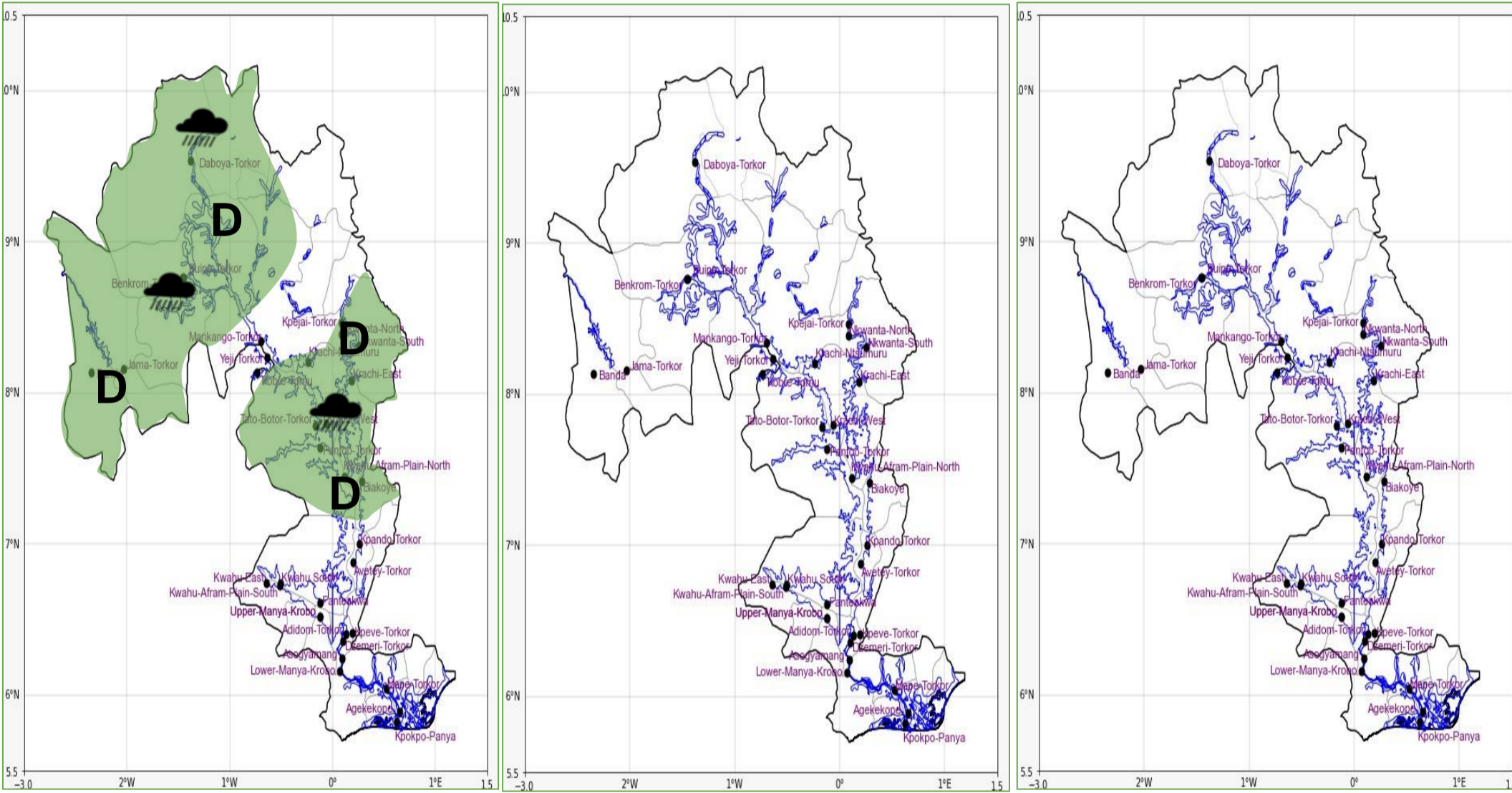


## INLAND WATER IMPACT-BASED FORECAST

### WEATHER SUMMARY

Variably cloudy weather conditions are expected over most areas within the northern and southern halves of the lake tonight through to the end of the forecast period. Cases of isolated thunderstorms and rain with a 40% likelihood are anticipated over the northern half during the first few hours of the evening. Early morning visibility will be reduced over the forest and hilly areas due to mist.

| EVENING (16/04/2026) | MORNING (17/04/2026) | AFTERNOON (17/04/2026) |
|----------------------|----------------------|------------------------|
|----------------------|----------------------|------------------------|



| Date               |
|--------------------|
| 16/04/2026         |
| Time Issued        |
| 4:00 PM            |
| Valid From         |
| 06:00 PM           |
| Nowcasting Risk    |
| <b>Take Action</b> |
| <b>Be aware</b>    |
| <b>Low risk</b>    |
| <b>No risk</b>     |

| Likelihood ↑ | Weather Forecast Risk Table |        |      |   |
|--------------|-----------------------------|--------|------|---|
|              | High (>60%)                 | G      | H    | I |
|              | Medium (40%-60%)            | D      | E    | F |
| Low (<40%)   | A                           | B      | C    |   |
|              | Low                         | Medium | High |   |
|              | Impact →                    |        |      |   |

| Time     | Surface Wind          | Visibility  | Temperature  |
|----------|-----------------------|-------------|--------------|
| 12 hours | S/SW 05<br>Max 20 kt  | (4 – 10) km | (23 – 36) °C |
| 24 hours | SE/SW 05<br>Max 20 kt | (4 – 10) km | (23 – 40) °C |