

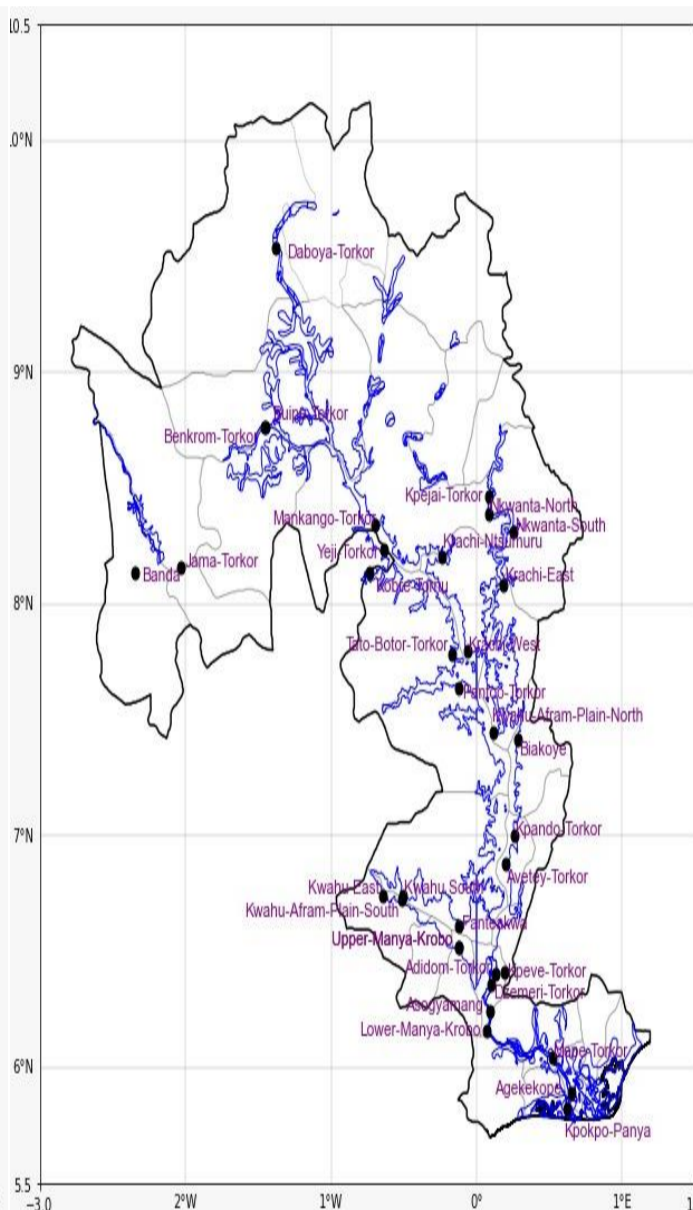
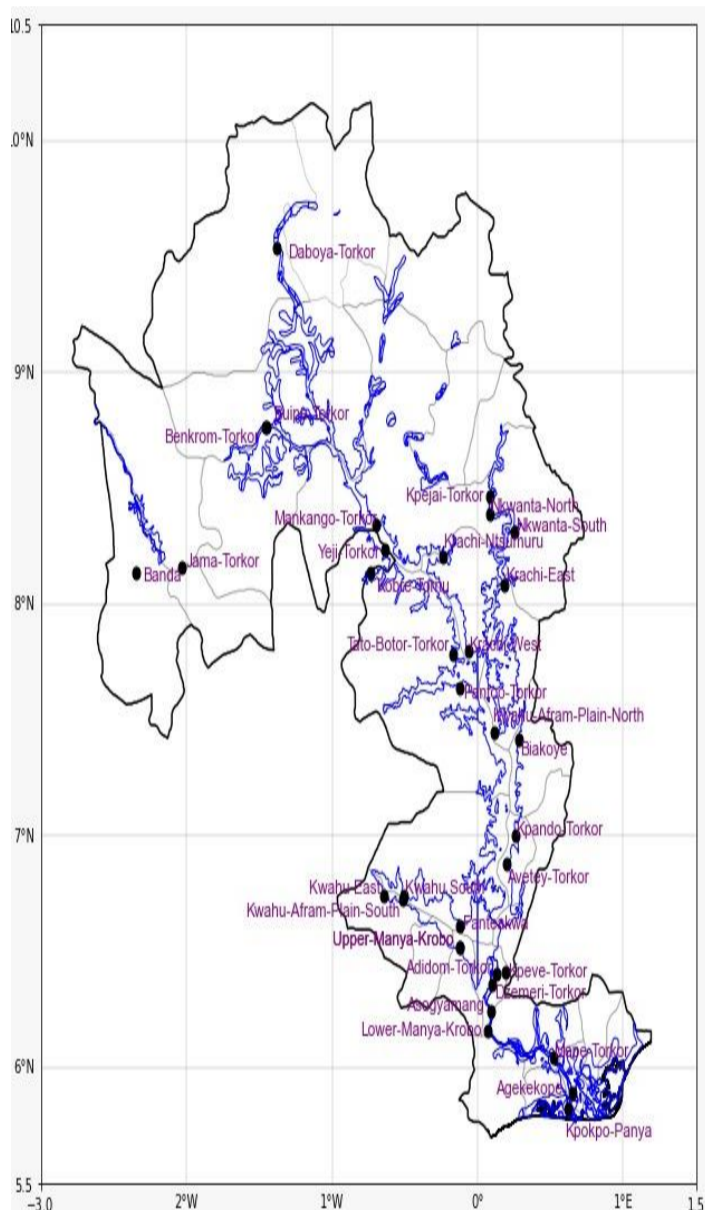
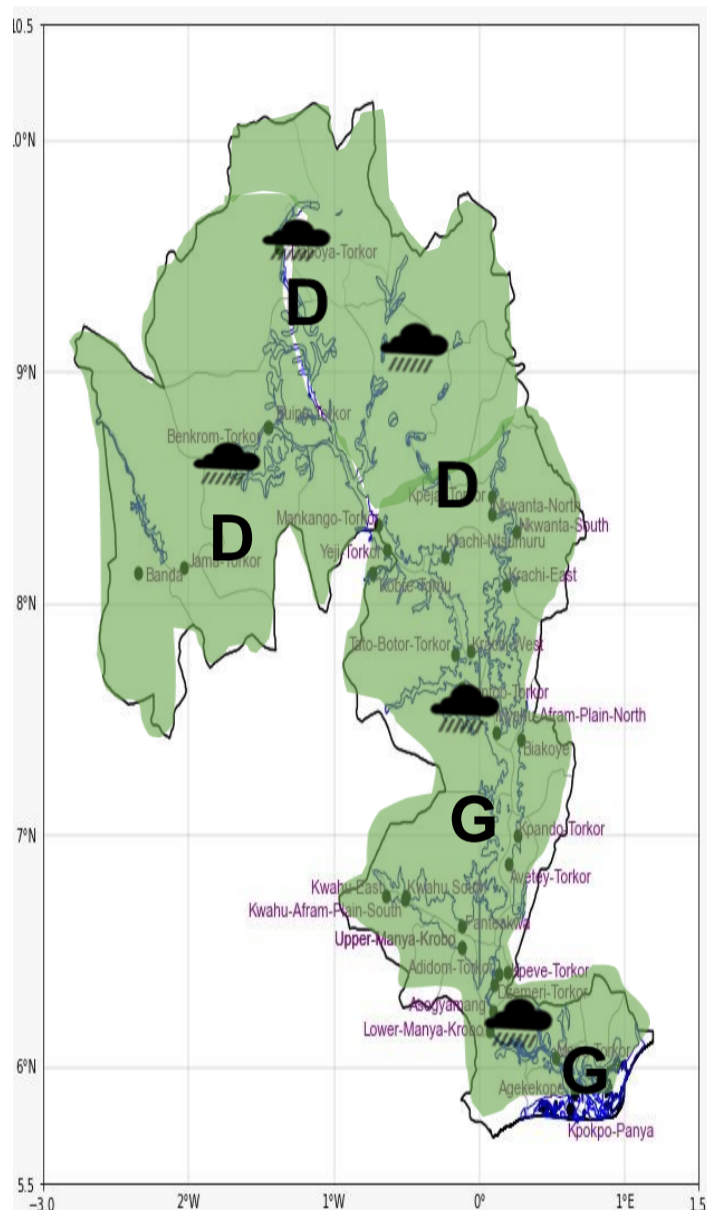


INLAND WATER IMPACT-BASED FORECAST

WEATHER SUMMARY

Mostly cloudy weather conditions are expected over the lake and nearby communities throughout the forecast period, with occasional sunshine in the afternoon. However, from this afternoon into the evening, there is a 40-60% chance of isolated light-to-moderate rain and thunderstorms across the lake and its environs.

AFTERNOON (26/04/2026)	EVENING (26/04/2026)	MORNING (27/04/2026)
------------------------	----------------------	----------------------



Date
26/04/2026
Time Issued
10:00 AM
Valid From
12:00 PM
Nowcasting Risk
Take Action
Be aware
Low risk
No risk

Likelihood ↑	Weather Forecast Risk Table			
	High (>60%)	G	H	I
	Medium (40%-60%)	D	E	F
Low (<40%)	A	B	C	
	Low	Medium	High	
	Impact →			

Time	Surface Wind	Visibility	Temperature
12 hours	S/SE 06 Max 26 kt	(4 – 10) km	(26 – 37) °C
24 hours	S/SW 05 Max 16 kt	(5 – 10) km	(24 – 35) °C