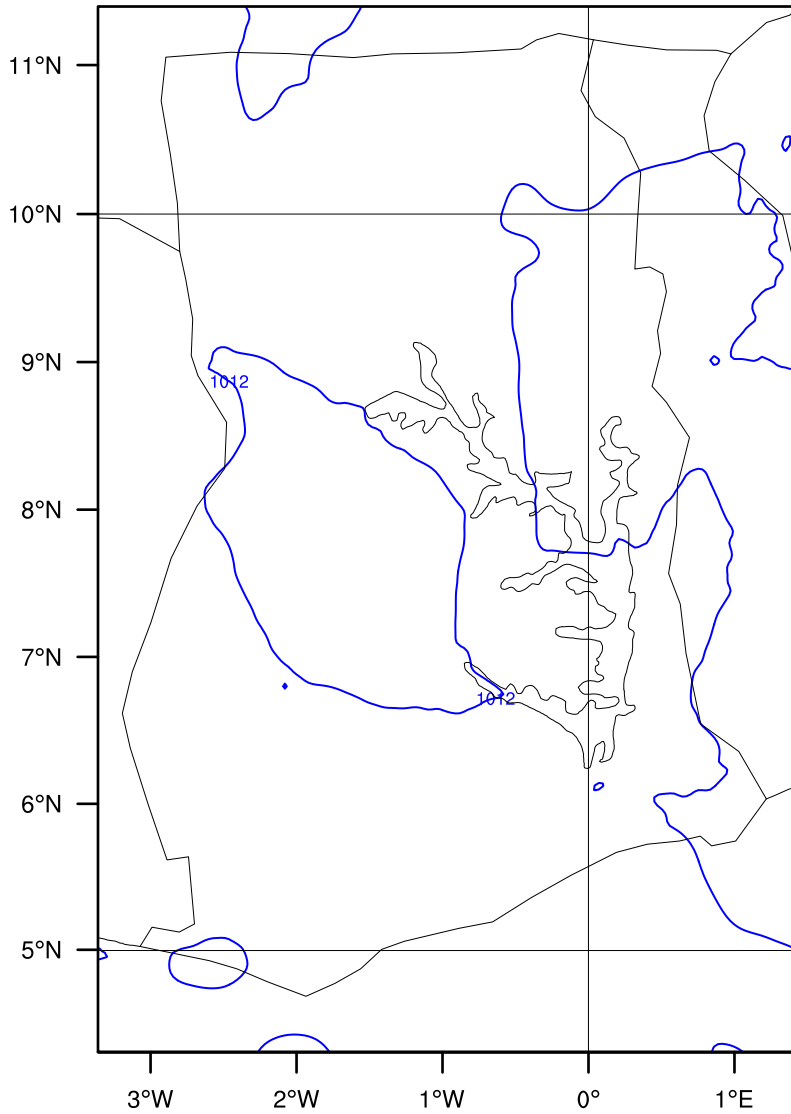


GMet (3DVar)

Init: 2026-04-29_06:00:00
Valid: 2026-04-29_06:00:00

Precipitation Tendency from 2026-04-29_06:00:00 to 2026-04-29_06:00:00 (mm)
Sea Level Pressure (hPa)

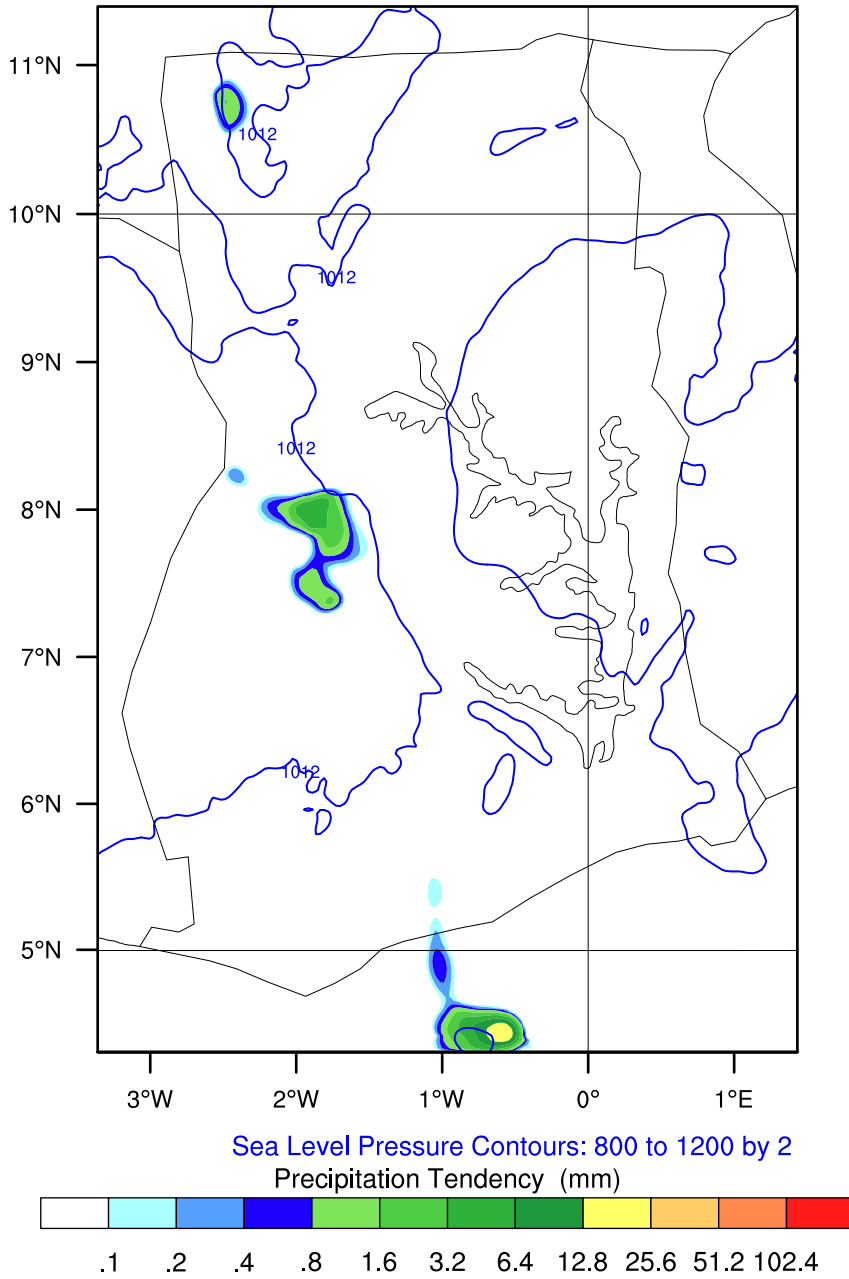


Sea Level Pressure Contours: 800 to 1200 by 2

GMet (3DVar)

Init: 2026-04-29_06:00:00
Valid: 2026-04-29_07:00:00

Precipitation Tendency from 2026-04-29_06:00:00 to 2026-04-29_07:00:00 (mm)
Sea Level Pressure (hPa)

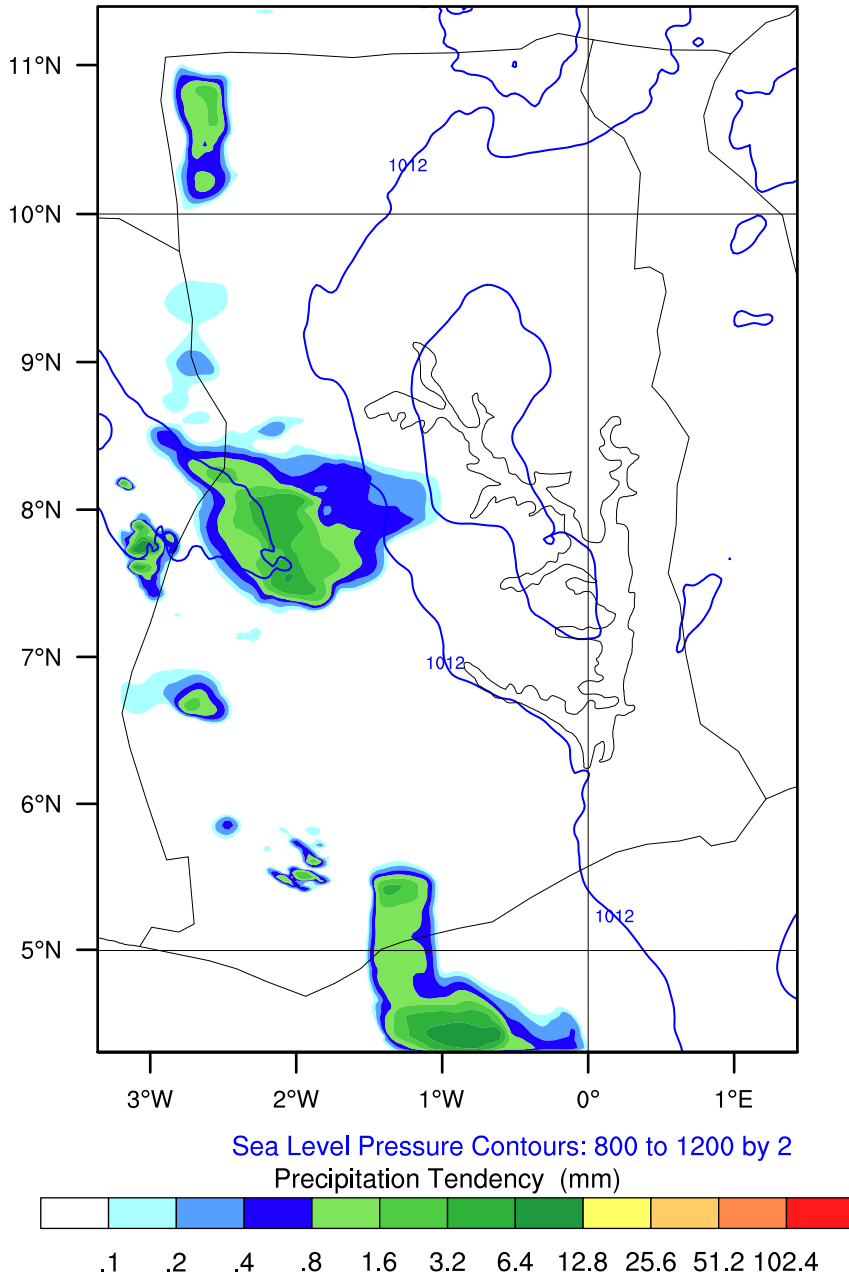


OUTPUT FROM WRF V4.6.1 MODEL
WE = 178 ; SN = 265 ; Levels = 40 ; Dis = 3km ; Phys Opt = 8 ; PBL Opt = 2 ; Cu Opt = 0

GMet (3DVar)

Init: 2026-04-29_06:00:00
Valid: 2026-04-29_08:00:00

Precipitation Tendency from 2026-04-29_07:00:00 to 2026-04-29_08:00:00 (mm)
Sea Level Pressure (hPa)

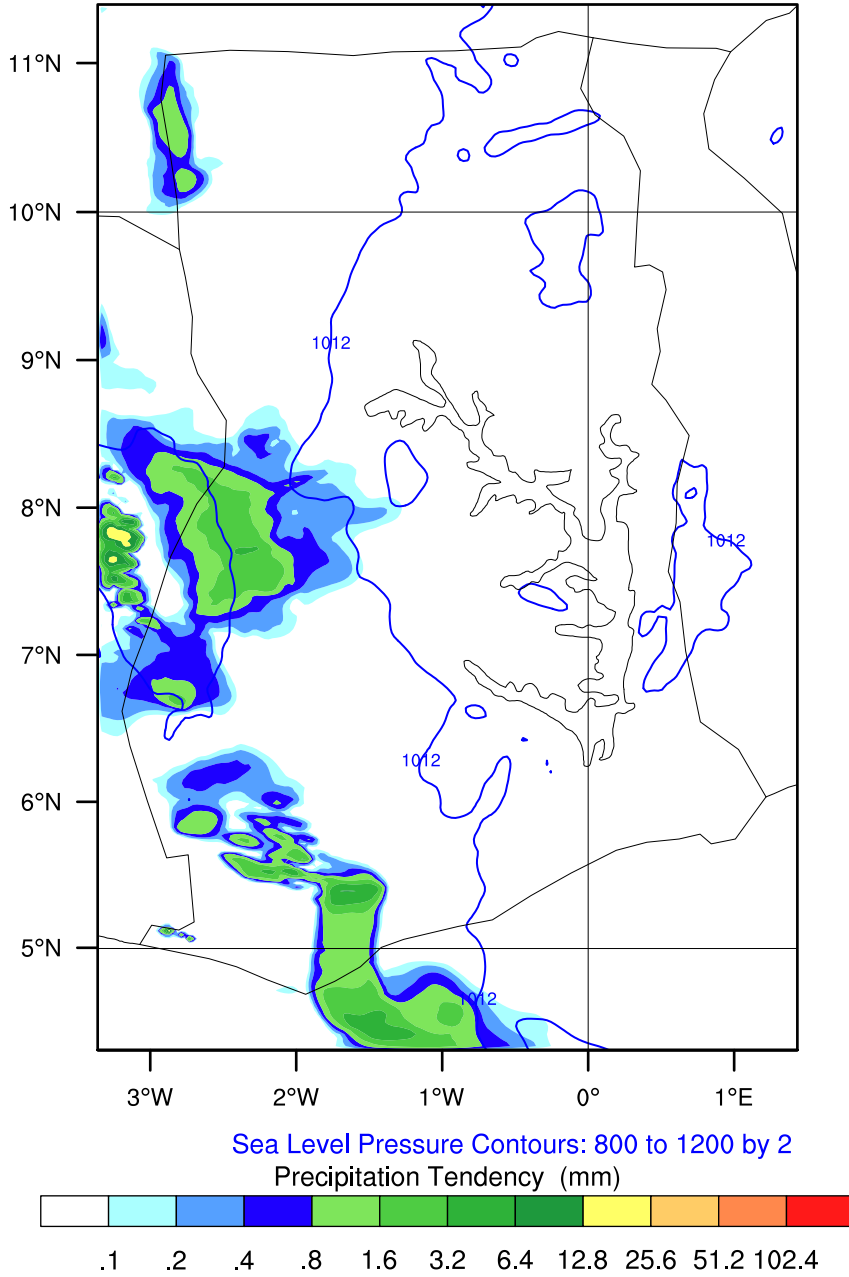


OUTPUT FROM WRF V4.6.1 MODEL
WE = 178 ; SN = 265 ; Levels = 40 ; Dis = 3km ; Phys Opt = 8 ; PBL Opt = 2 ; Cu Opt = 0

GMet (3DVar)

Init: 2026-04-29_06:00:00
Valid: 2026-04-29_09:00:00

Precipitation Tendency from 2026-04-29_08:00:00 to 2026-04-29_09:00:00 (mm)
Sea Level Pressure (hPa)

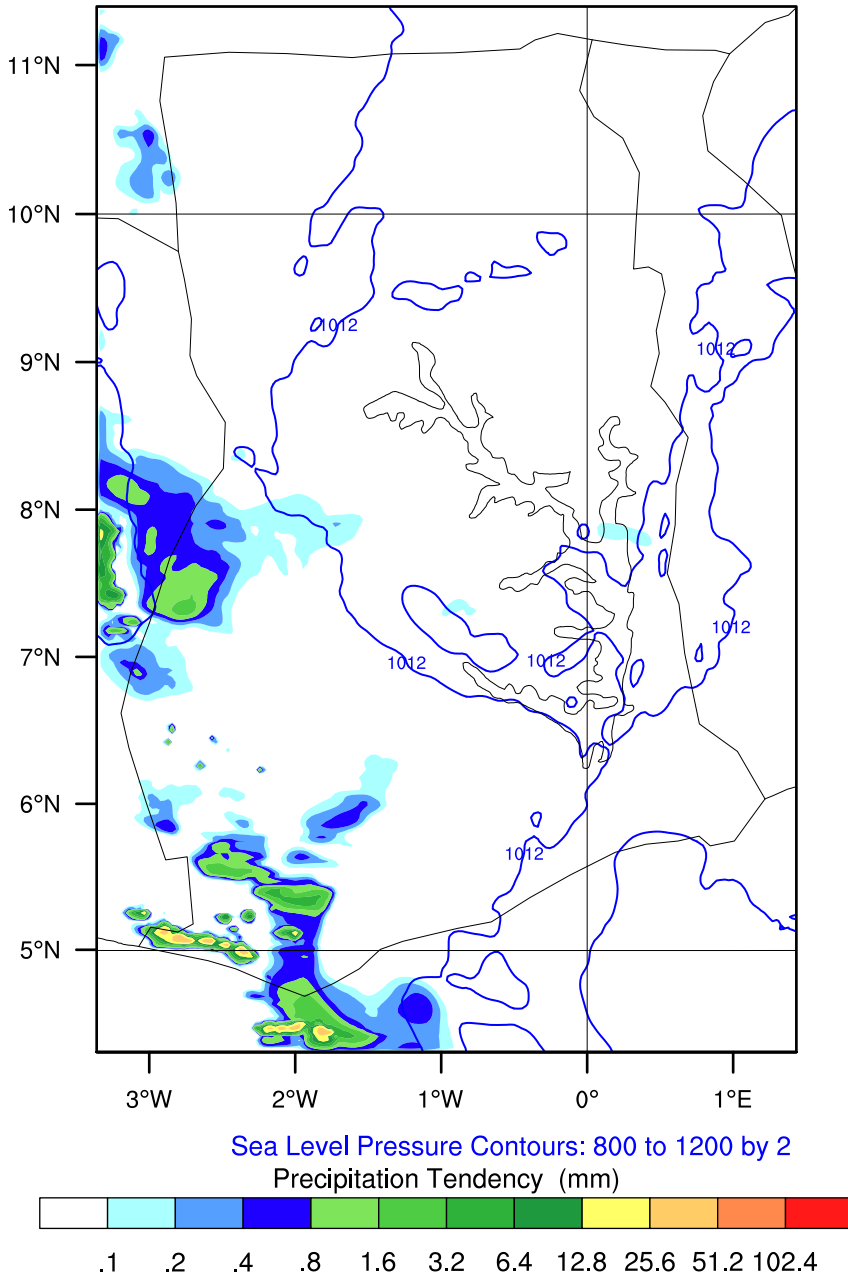


OUTPUT FROM WRF V4.6.1 MODEL
WE = 178 ; SN = 265 ; Levels = 40 ; Dis = 3km ; Phys Opt = 8 ; PBL Opt = 2 ; Cu Opt = 0

GMet (3DVar)

Init: 2026-04-29_06:00:00
Valid: 2026-04-29_10:00:00

Precipitation Tendency from 2026-04-29_09:00:00 to 2026-04-29_10:00:00 (mm)
Sea Level Pressure (hPa)

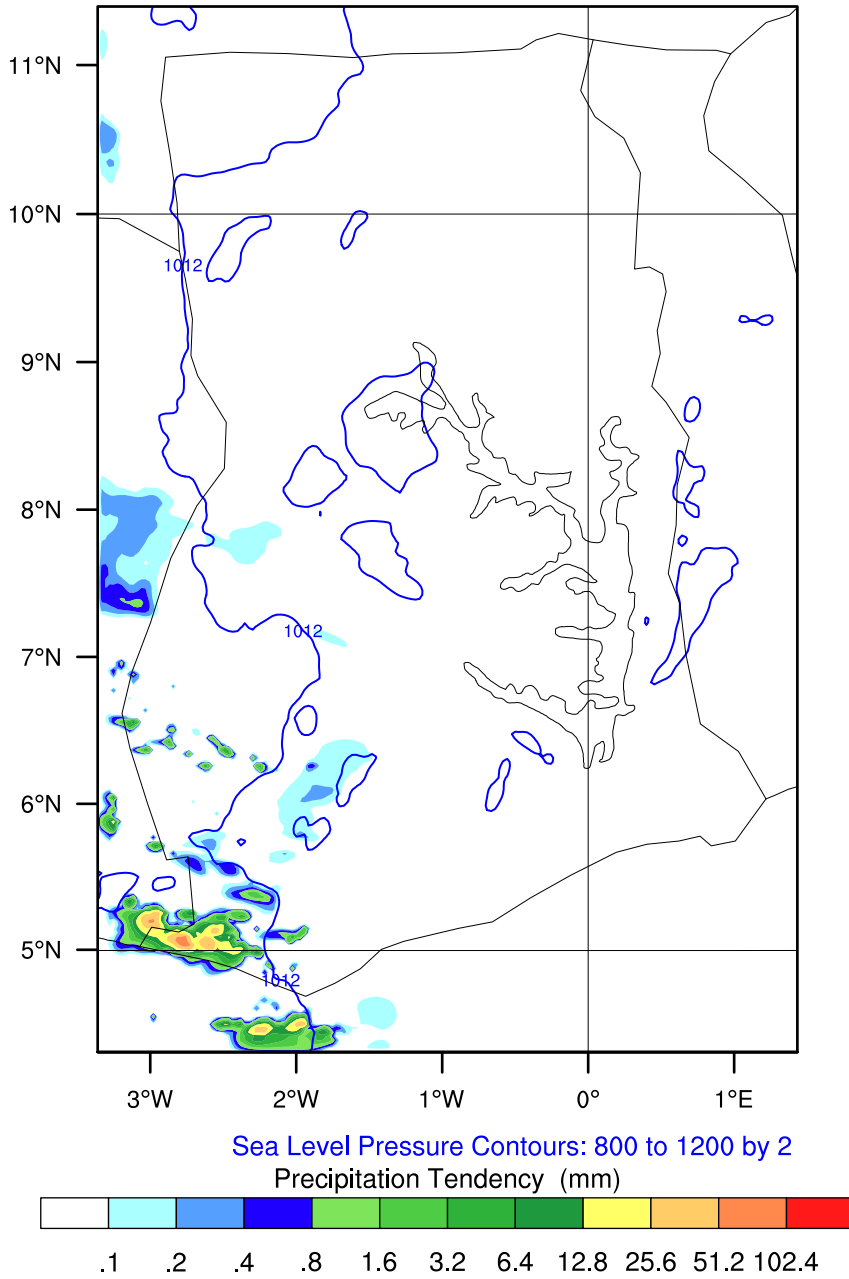


OUTPUT FROM WRF V4.6.1 MODEL
WE = 178 ; SN = 265 ; Levels = 40 ; Dis = 3km ; Phys Opt = 8 ; PBL Opt = 2 ; Cu Opt = 0

GMet (3DVar)

Init: 2026-04-29_06:00:00
Valid: 2026-04-29_11:00:00

Precipitation Tendency from 2026-04-29_10:00:00 to 2026-04-29_11:00:00 (mm)
Sea Level Pressure (hPa)

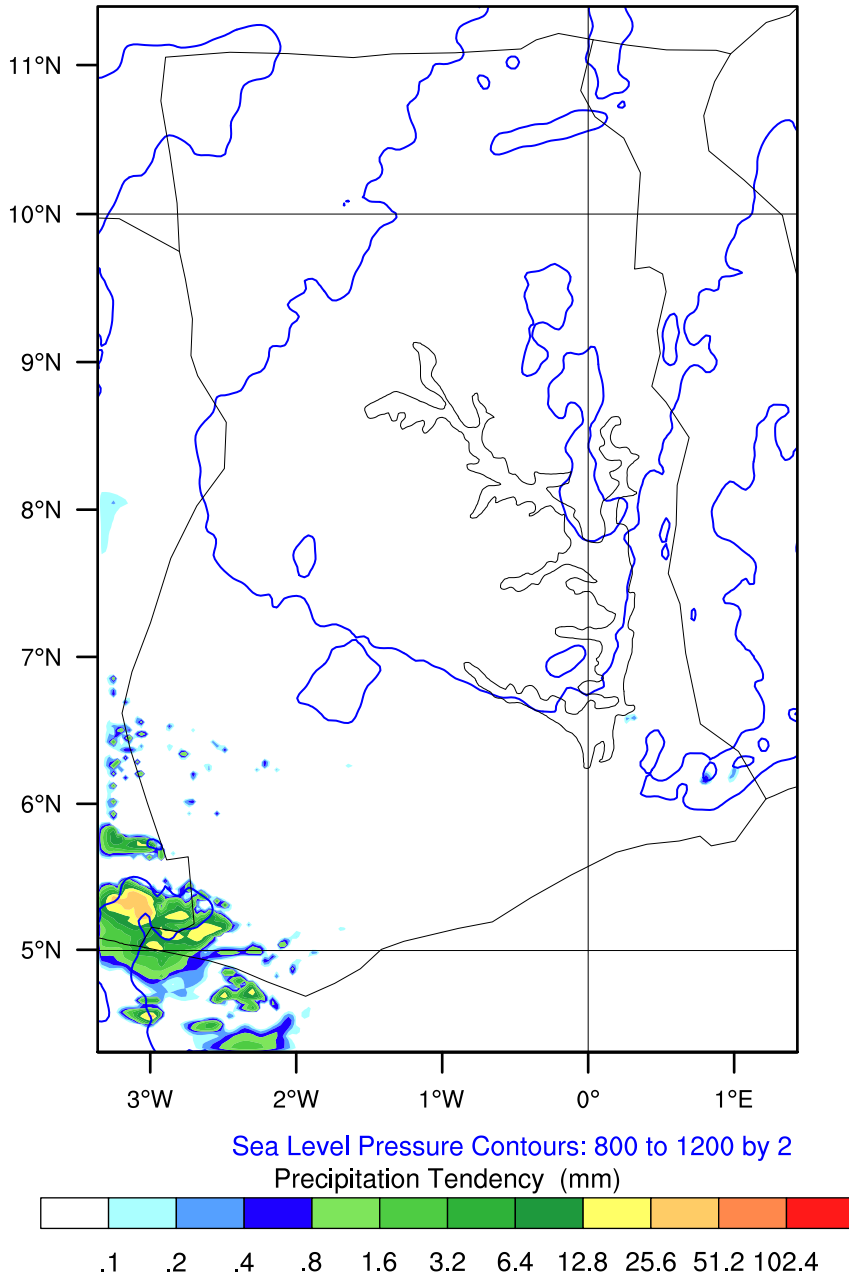


OUTPUT FROM WRF V4.6.1 MODEL
WE = 178 ; SN = 265 ; Levels = 40 ; Dis = 3km ; Phys Opt = 8 ; PBL Opt = 2 ; Cu Opt = 0

GMet (3DVar)

Init: 2026-04-29_06:00:00
Valid: 2026-04-29_12:00:00

Precipitation Tendency from 2026-04-29_11:00:00 to 2026-04-29_12:00:00 (mm)
Sea Level Pressure (hPa)

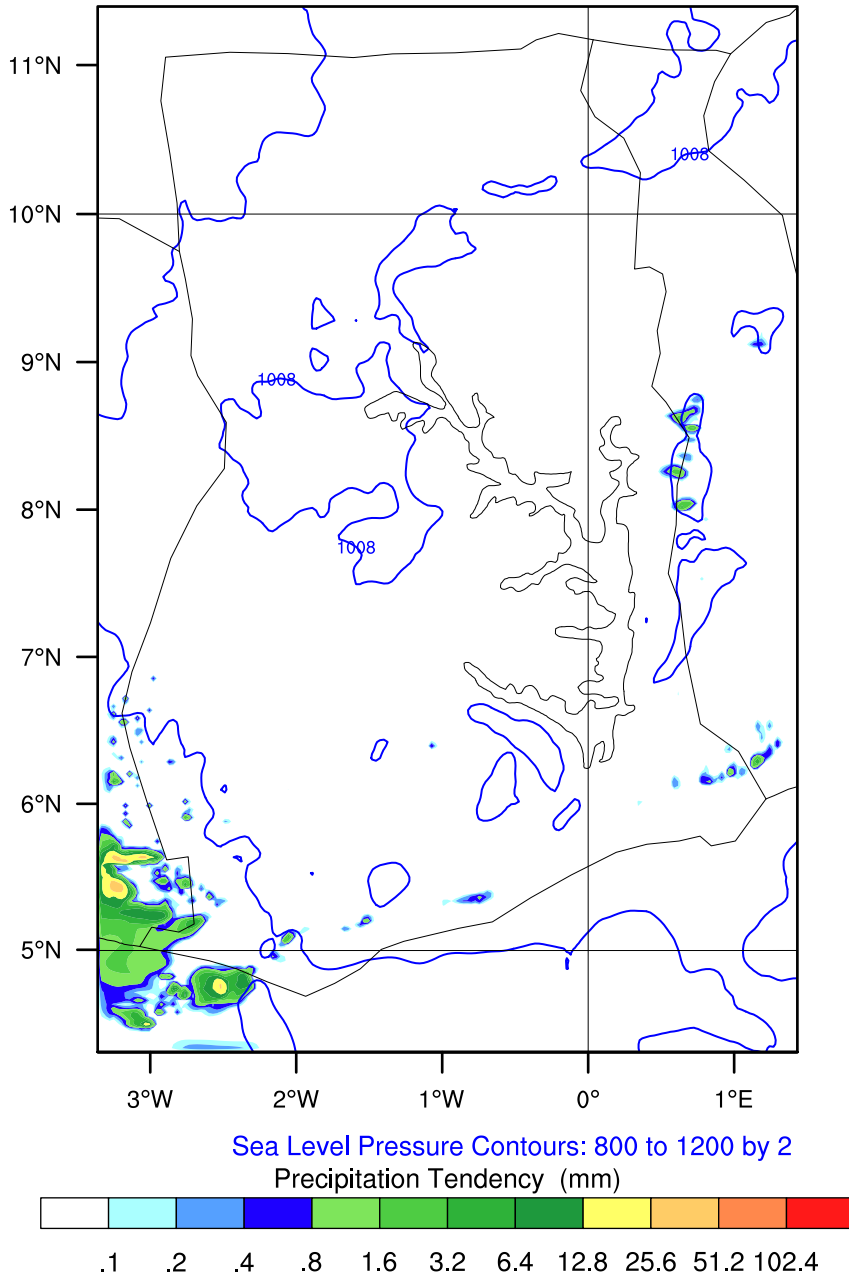


OUTPUT FROM WRF V4.6.1 MODEL
WE = 178 ; SN = 265 ; Levels = 40 ; Dis = 3km ; Phys Opt = 8 ; PBL Opt = 2 ; Cu Opt = 0

GMet (3DVar)

Init: 2026-04-29_06:00:00
Valid: 2026-04-29_13:00:00

Precipitation Tendency from 2026-04-29_12:00:00 to 2026-04-29_13:00:00 (mm)
Sea Level Pressure (hPa)

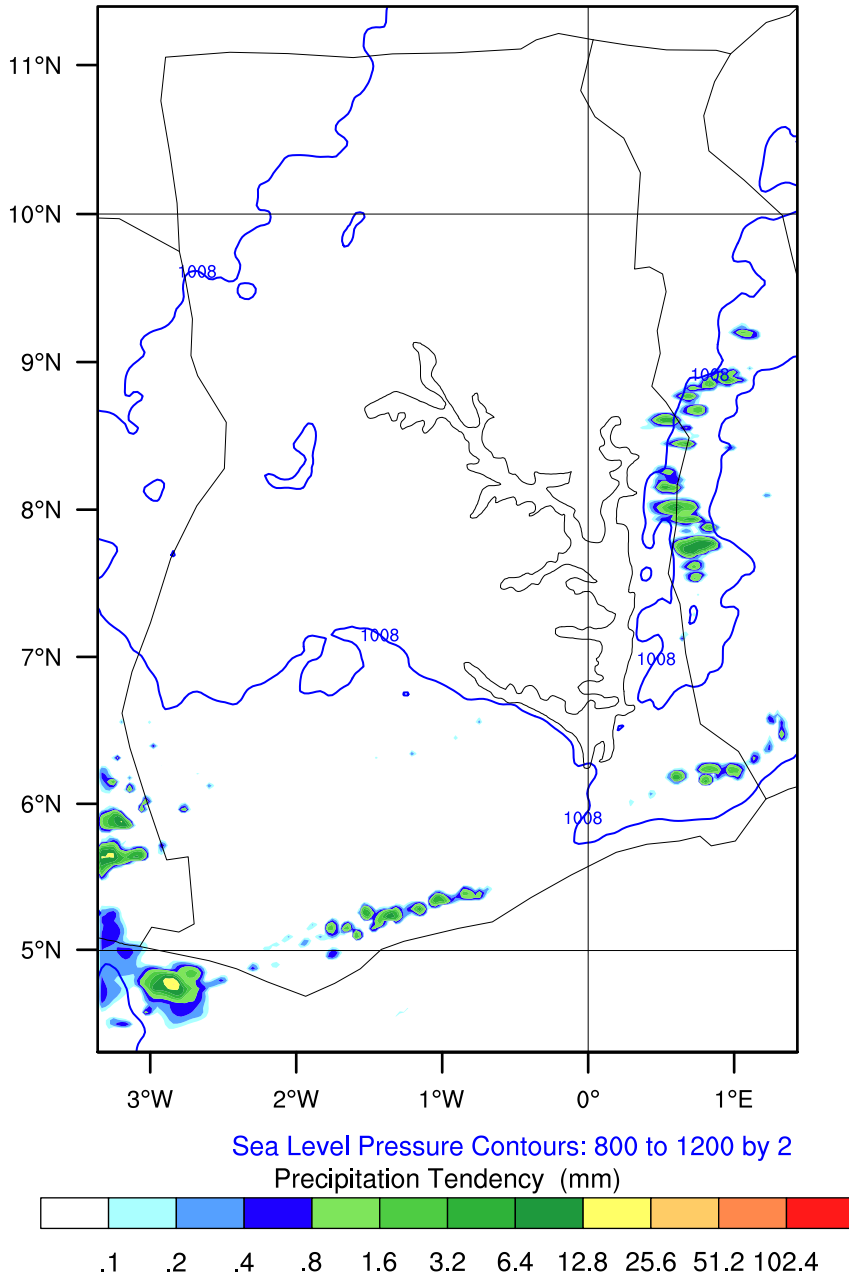


OUTPUT FROM WRF V4.6.1 MODEL
WE = 178 ; SN = 265 ; Levels = 40 ; Dis = 3km ; Phys Opt = 8 ; PBL Opt = 2 ; Cu Opt = 0

GMet (3DVar)

Init: 2026-04-29_06:00:00
Valid: 2026-04-29_14:00:00

Precipitation Tendency from 2026-04-29_13:00:00 to 2026-04-29_14:00:00 (mm)
Sea Level Pressure (hPa)

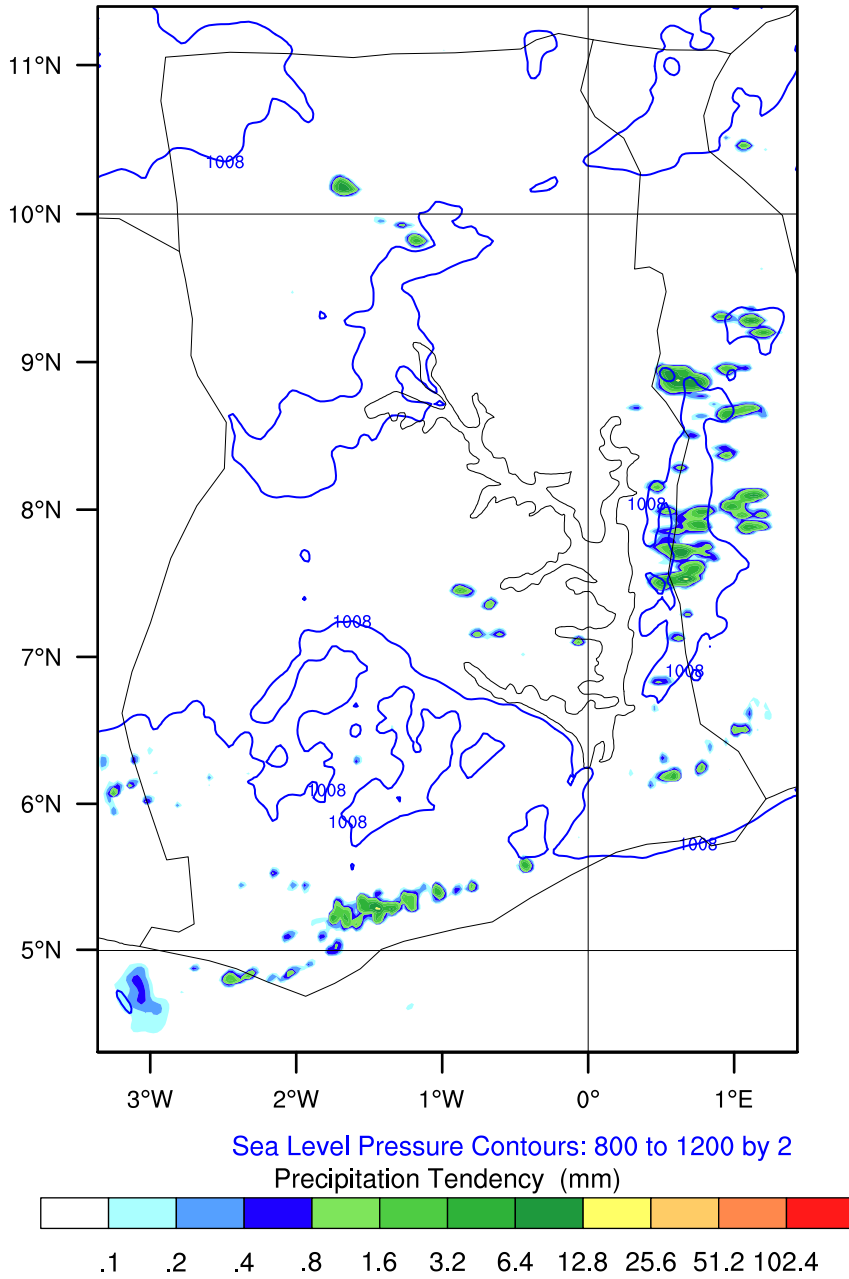


OUTPUT FROM WRF V4.6.1 MODEL
WE = 178 ; SN = 265 ; Levels = 40 ; Dis = 3km ; Phys Opt = 8 ; PBL Opt = 2 ; Cu Opt = 0

GMet (3DVar)

Init: 2026-04-29_06:00:00
Valid: 2026-04-29_15:00:00

Precipitation Tendency from 2026-04-29_14:00:00 to 2026-04-29_15:00:00 (mm)
Sea Level Pressure (hPa)

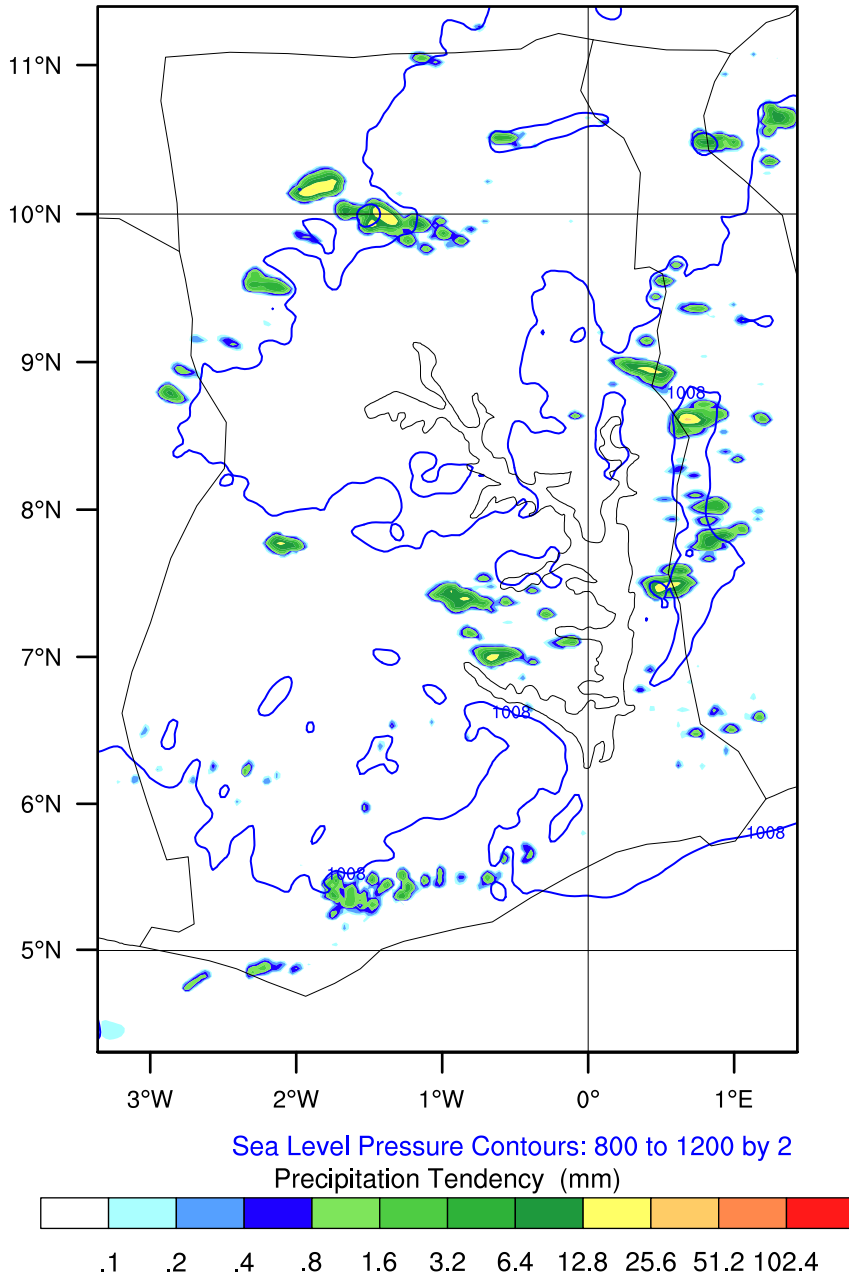


OUTPUT FROM WRF V4.6.1 MODEL
WE = 178 ; SN = 265 ; Levels = 40 ; Dis = 3km ; Phys Opt = 8 ; PBL Opt = 2 ; Cu Opt = 0

GMet (3DVar)

Init: 2026-04-29_06:00:00
Valid: 2026-04-29_16:00:00

Precipitation Tendency from 2026-04-29_15:00:00 to 2026-04-29_16:00:00 (mm)
Sea Level Pressure (hPa)

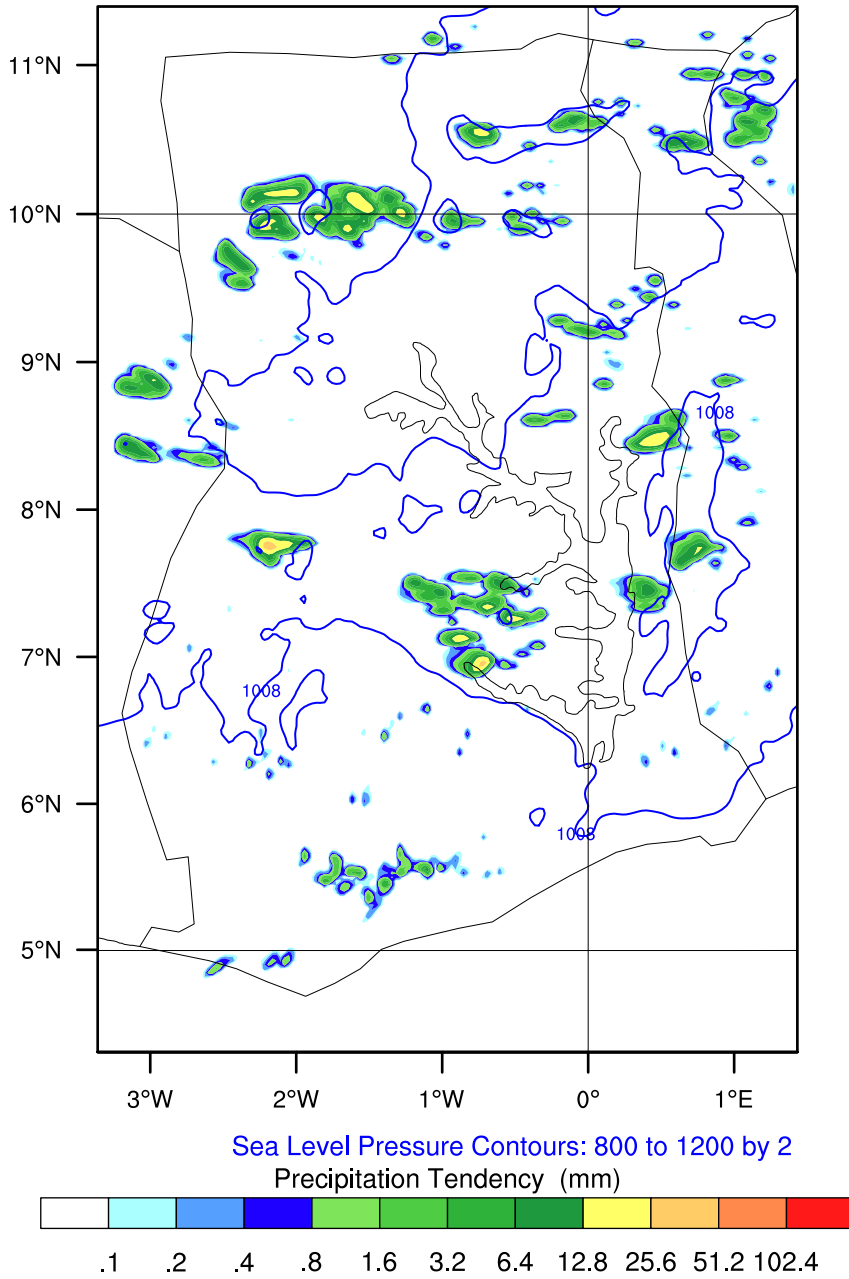


OUTPUT FROM WRF V4.6.1 MODEL
WE = 178 ; SN = 265 ; Levels = 40 ; Dis = 3km ; Phys Opt = 8 ; PBL Opt = 2 ; Cu Opt = 0

GMet (3DVar)

Init: 2026-04-29_06:00:00
Valid: 2026-04-29_17:00:00

Precipitation Tendency from 2026-04-29_16:00:00 to 2026-04-29_17:00:00 (mm)
Sea Level Pressure (hPa)

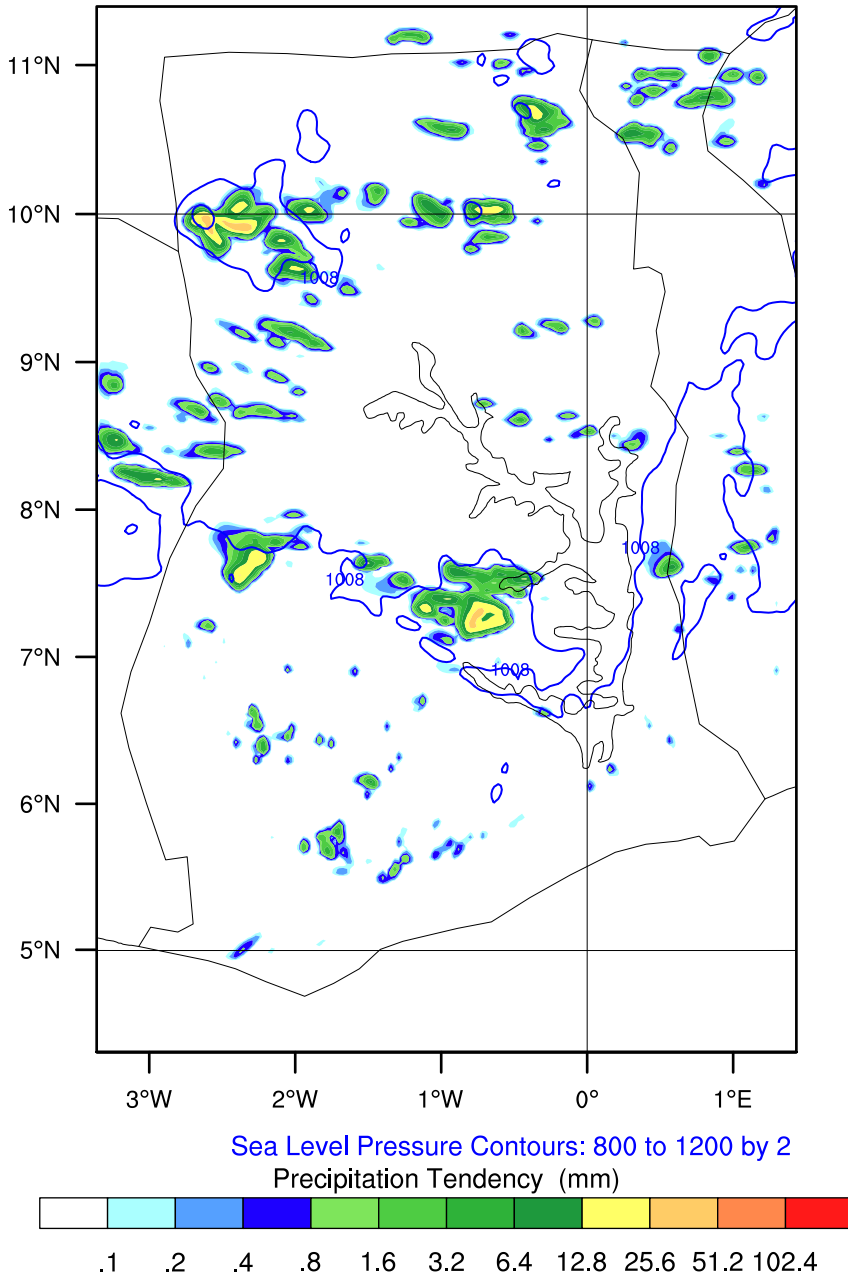


OUTPUT FROM WRF V4.6.1 MODEL
WE = 178 ; SN = 265 ; Levels = 40 ; Dis = 3km ; Phys Opt = 8 ; PBL Opt = 2 ; Cu Opt = 0

GMet (3DVar)

Init: 2026-04-29_06:00:00
Valid: 2026-04-29_18:00:00

Precipitation Tendency from 2026-04-29_17:00:00 to 2026-04-29_18:00:00 (mm)
Sea Level Pressure (hPa)

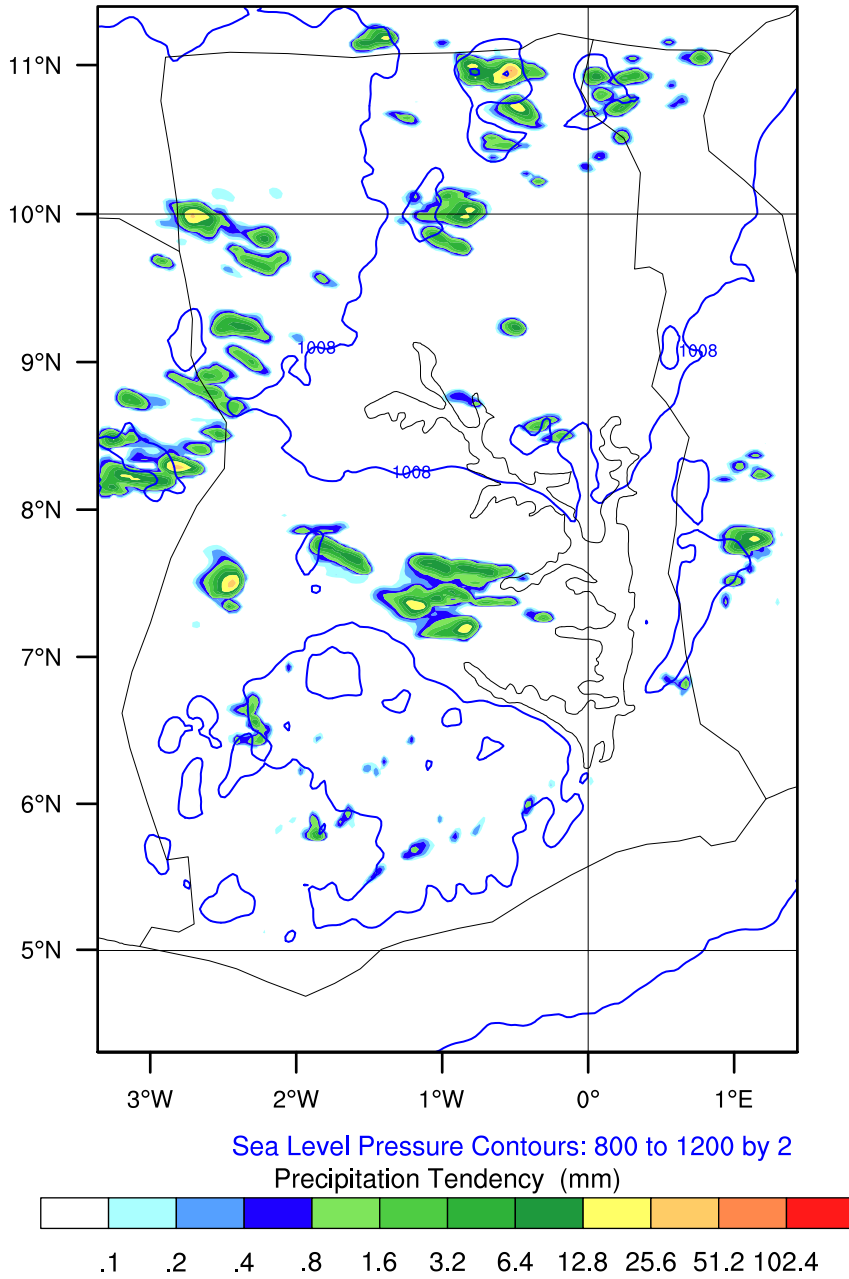


OUTPUT FROM WRF V4.6.1 MODEL
WE = 178 ; SN = 265 ; Levels = 40 ; Dis = 3km ; Phys Opt = 8 ; PBL Opt = 2 ; Cu Opt = 0

GMet (3DVar)

Init: 2026-04-29_06:00:00
Valid: 2026-04-29_19:00:00

Precipitation Tendency from 2026-04-29_18:00:00 to 2026-04-29_19:00:00 (mm)
Sea Level Pressure (hPa)

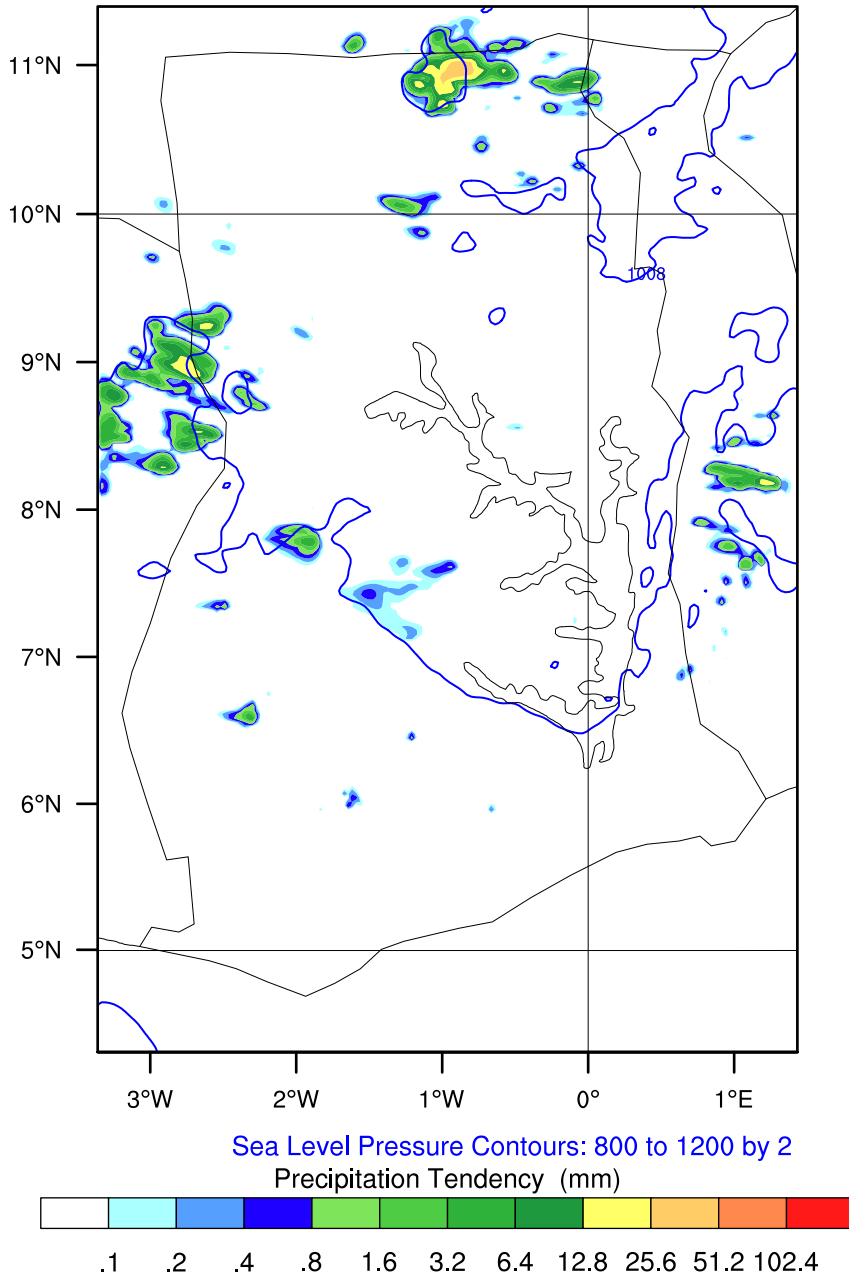


OUTPUT FROM WRF V4.6.1 MODEL
WE = 178 ; SN = 265 ; Levels = 40 ; Dis = 3km ; Phys Opt = 8 ; PBL Opt = 2 ; Cu Opt = 0

GMet (3DVar)

Init: 2026-04-29_06:00:00
Valid: 2026-04-29_20:00:00

Precipitation Tendency from 2026-04-29_19:00:00 to 2026-04-29_20:00:00 (mm)
Sea Level Pressure (hPa)

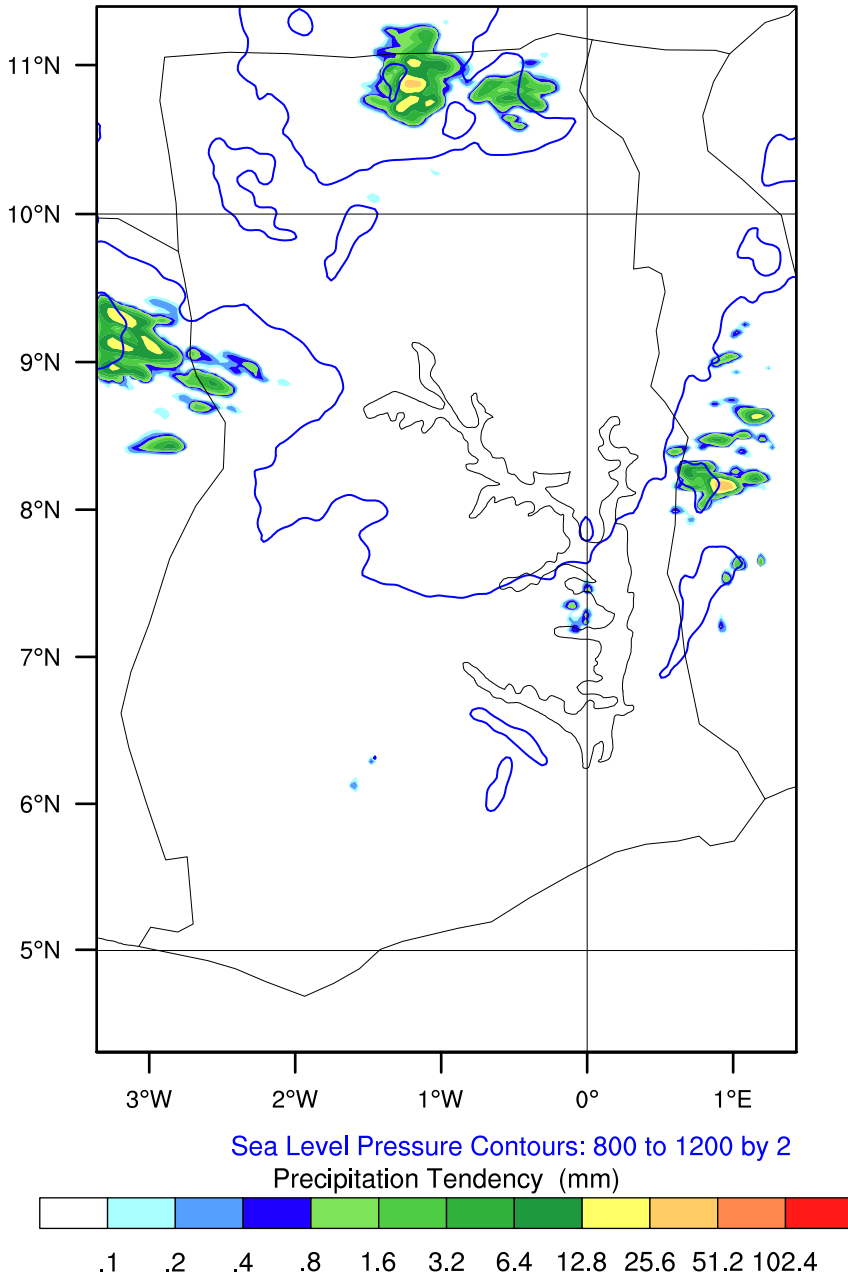


OUTPUT FROM WRF V4.6.1 MODEL
WE = 178 ; SN = 265 ; Levels = 40 ; Dis = 3km ; Phys Opt = 8 ; PBL Opt = 2 ; Cu Opt = 0

GMet (3DVar)

Init: 2026-04-29_06:00:00
Valid: 2026-04-29_21:00:00

Precipitation Tendency from 2026-04-29_20:00:00 to 2026-04-29_21:00:00 (mm)
Sea Level Pressure (hPa)

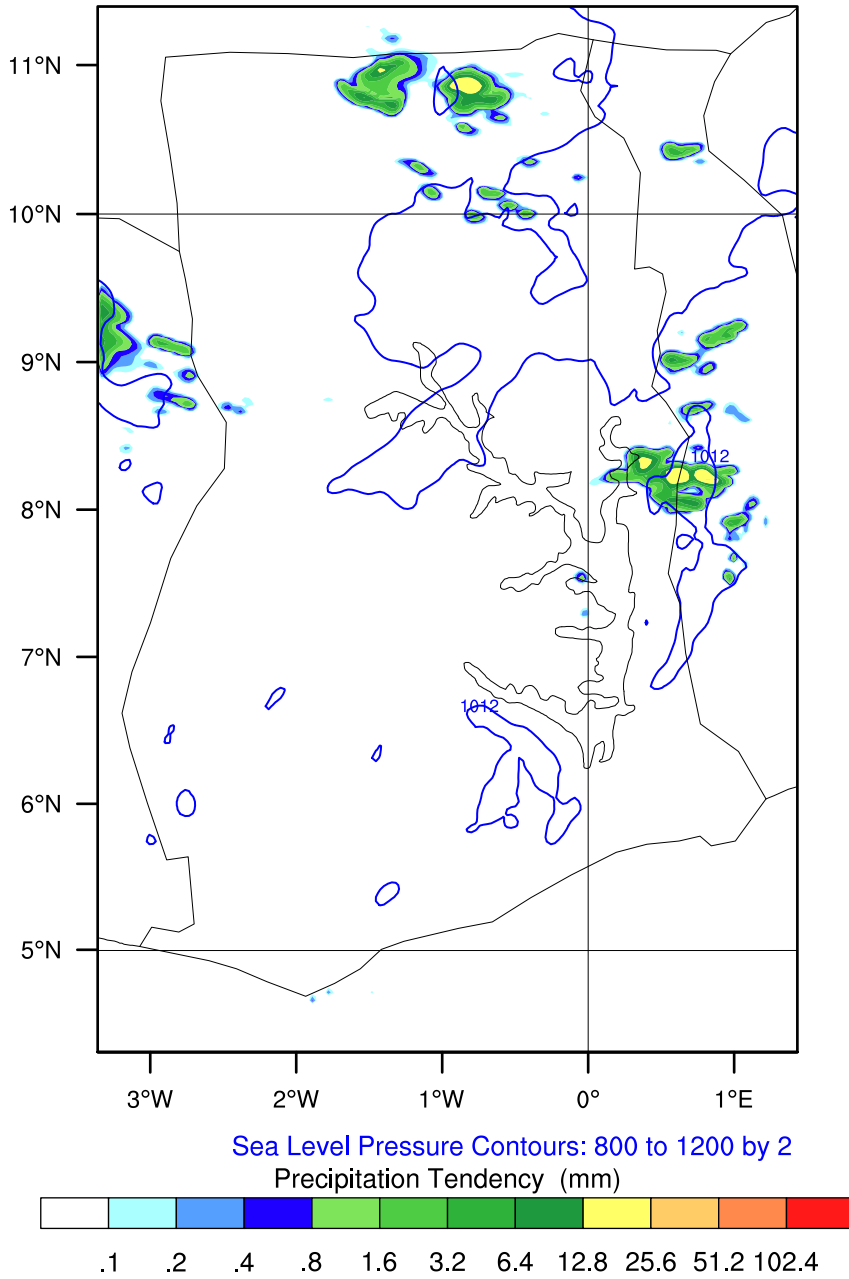


OUTPUT FROM WRF V4.6.1 MODEL
WE = 178 ; SN = 265 ; Levels = 40 ; Dis = 3km ; Phys Opt = 8 ; PBL Opt = 2 ; Cu Opt = 0

GMet (3DVar)

Init: 2026-04-29_06:00:00
Valid: 2026-04-29_22:00:00

Precipitation Tendency from 2026-04-29_21:00:00 to 2026-04-29_22:00:00 (mm)
Sea Level Pressure (hPa)

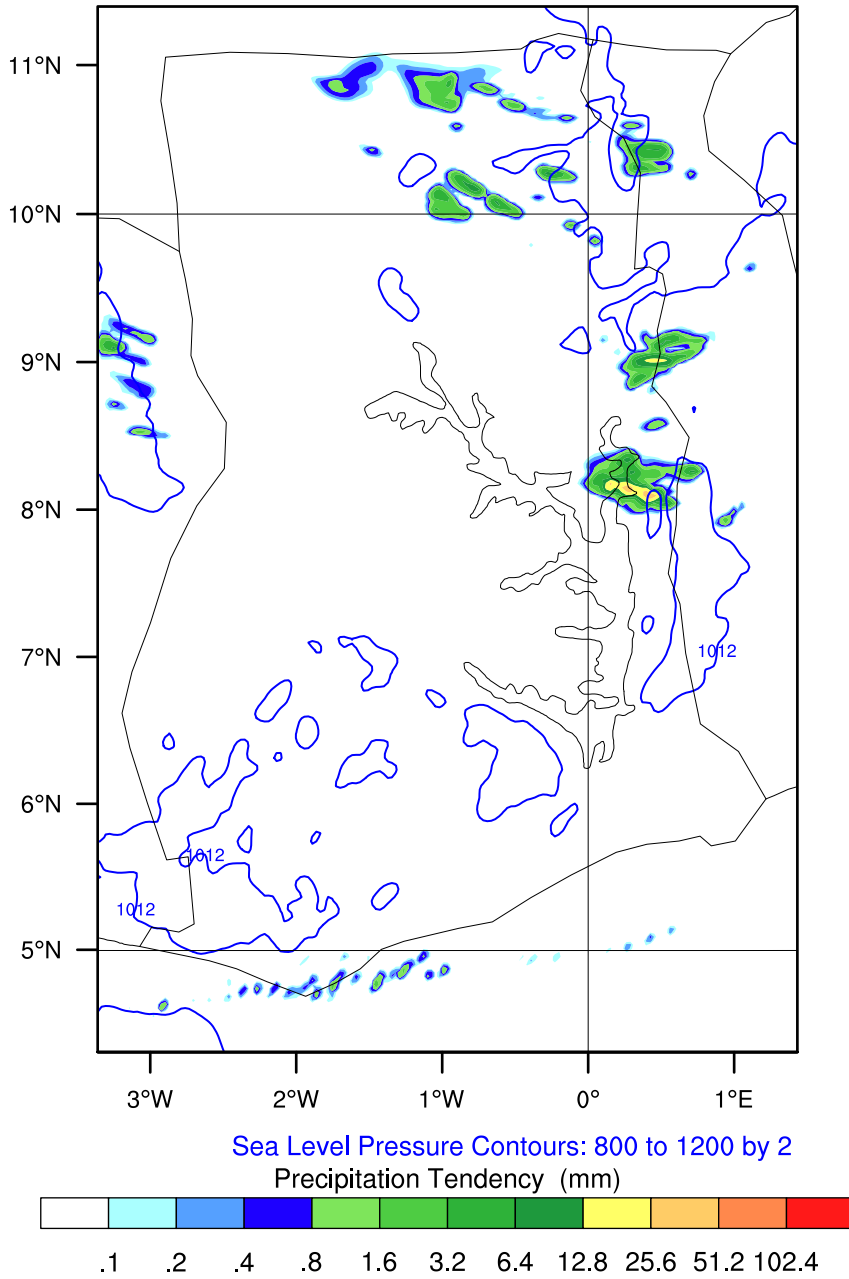


OUTPUT FROM WRF V4.6.1 MODEL
WE = 178 ; SN = 265 ; Levels = 40 ; Dis = 3km ; Phys Opt = 8 ; PBL Opt = 2 ; Cu Opt = 0

GMet (3DVar)

Init: 2026-04-29_06:00:00
Valid: 2026-04-29_23:00:00

Precipitation Tendency from 2026-04-29_22:00:00 to 2026-04-29_23:00:00 (mm)
Sea Level Pressure (hPa)

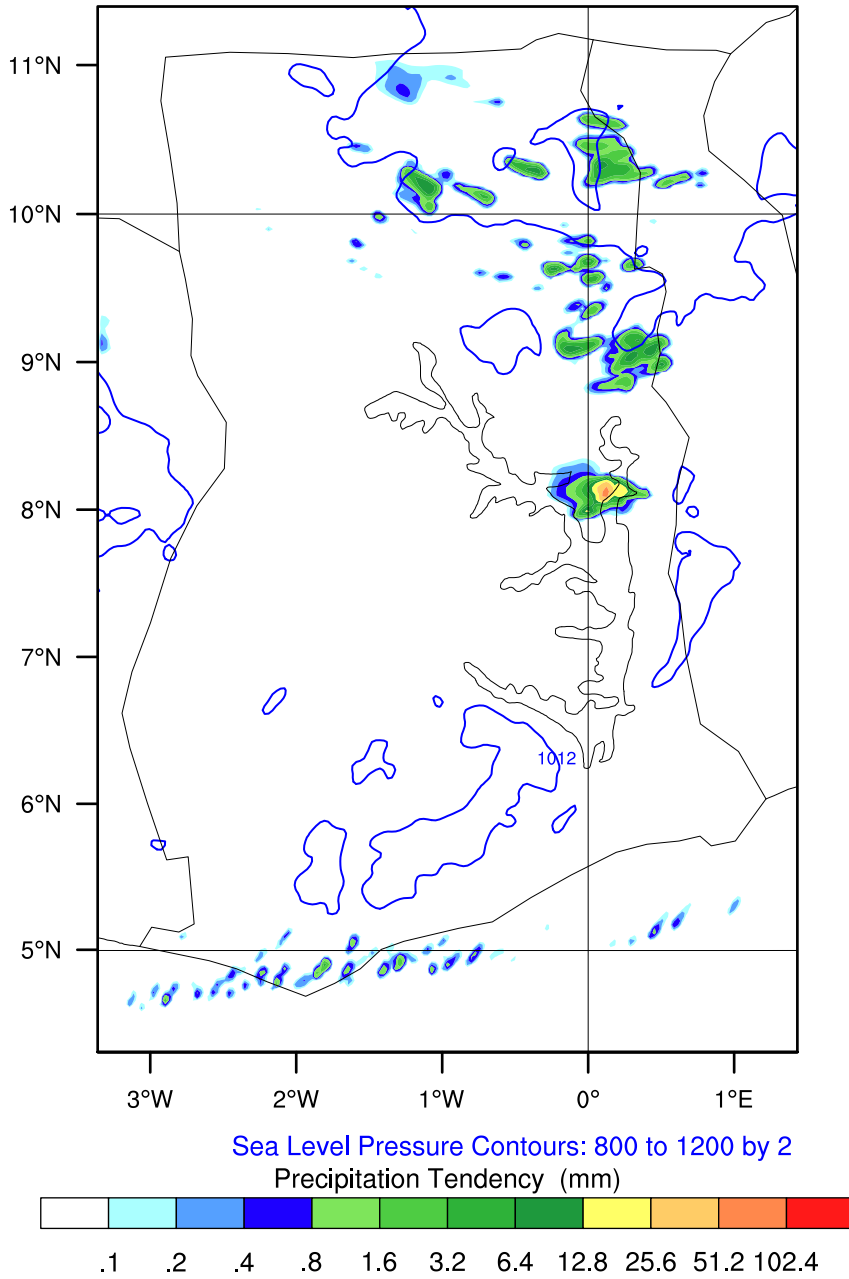


OUTPUT FROM WRF V4.6.1 MODEL
WE = 178 ; SN = 265 ; Levels = 40 ; Dis = 3km ; Phys Opt = 8 ; PBL Opt = 2 ; Cu Opt = 0

GMet (3DVar)

Init: 2026-04-29_06:00:00
Valid: 2026-04-30_00:00:00

Precipitation Tendency from 2026-04-29_23:00:00 to 2026-04-30_00:00:00 (mm)
Sea Level Pressure (hPa)

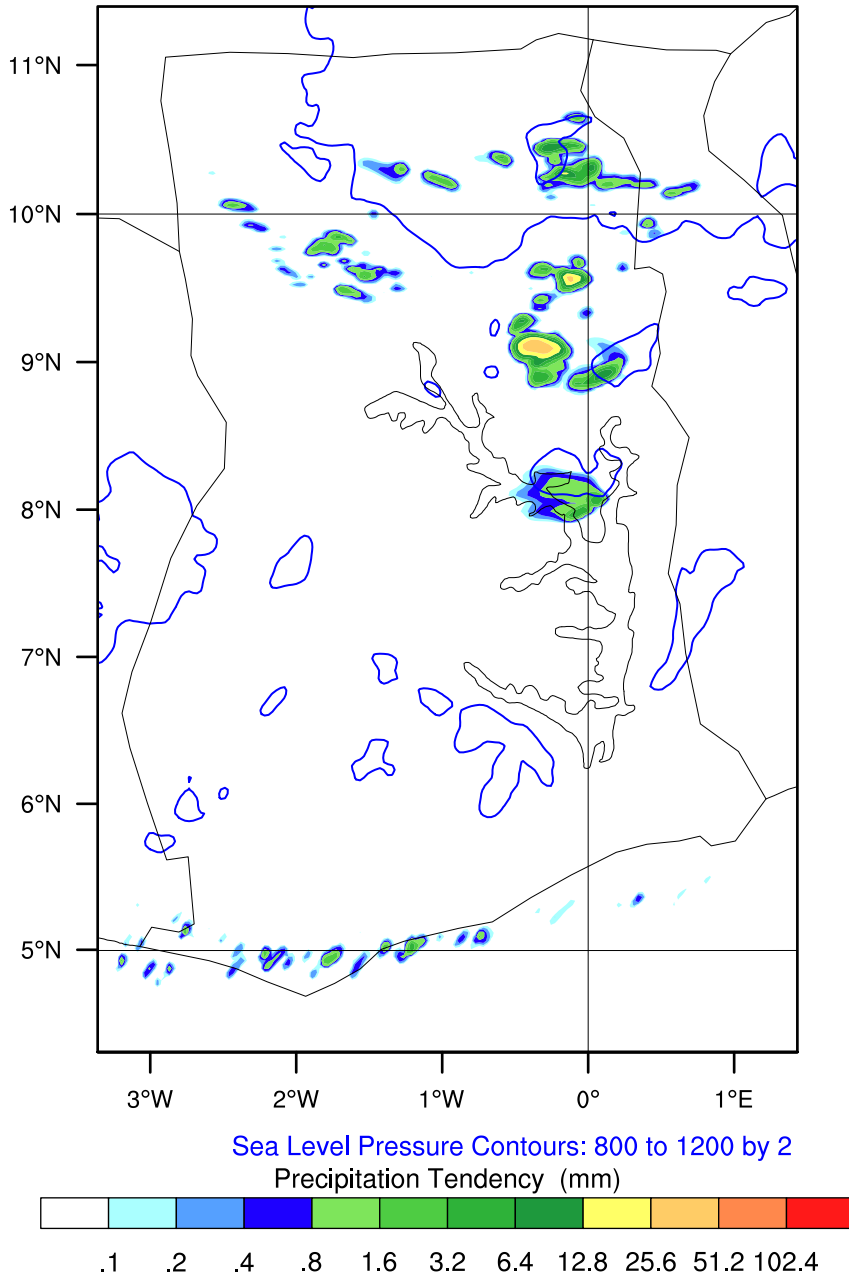


OUTPUT FROM WRF V4.6.1 MODEL
WE = 178 ; SN = 265 ; Levels = 40 ; Dis = 3km ; Phys Opt = 8 ; PBL Opt = 2 ; Cu Opt = 0

GMet (3DVar)

Init: 2026-04-29_06:00:00
Valid: 2026-04-30_01:00:00

Precipitation Tendency from 2026-04-30_00:00:00 to 2026-04-30_01:00:00 (mm)
Sea Level Pressure (hPa)

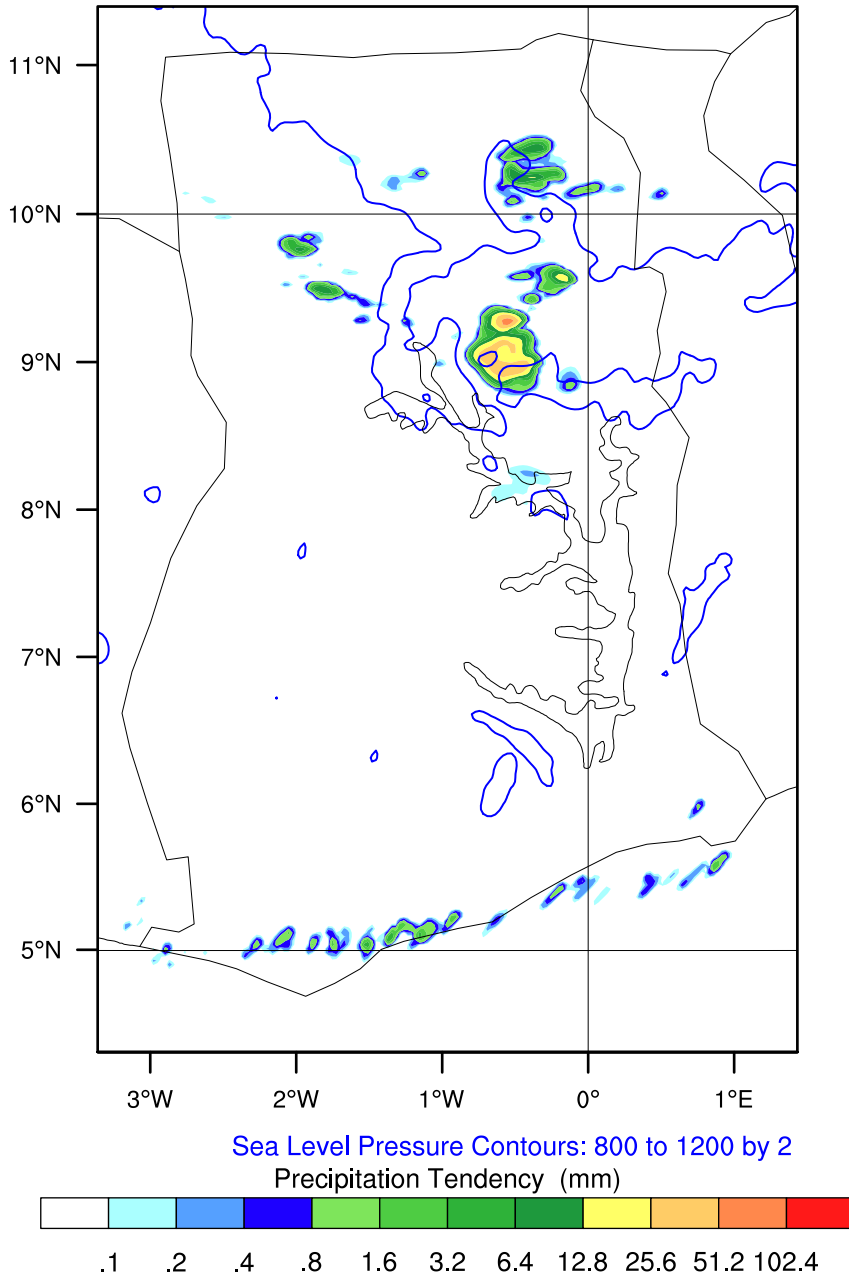


OUTPUT FROM WRF V4.6.1 MODEL
WE = 178 ; SN = 265 ; Levels = 40 ; Dis = 3km ; Phys Opt = 8 ; PBL Opt = 2 ; Cu Opt = 0

GMet (3DVar)

Init: 2026-04-29_06:00:00
Valid: 2026-04-30_02:00:00

Precipitation Tendency from 2026-04-30_01:00:00 to 2026-04-30_02:00:00 (mm)
Sea Level Pressure (hPa)

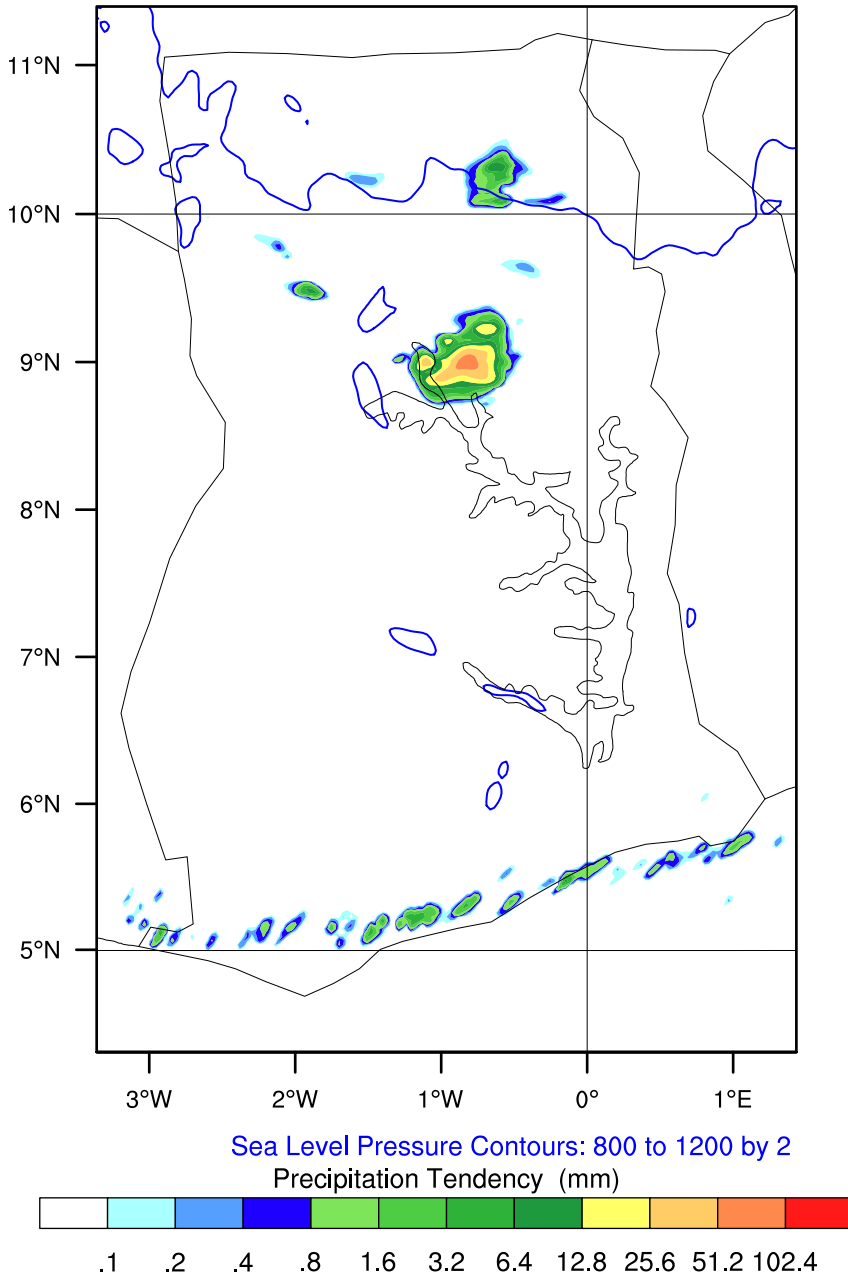


OUTPUT FROM WRF V4.6.1 MODEL
WE = 178 ; SN = 265 ; Levels = 40 ; Dis = 3km ; Phys Opt = 8 ; PBL Opt = 2 ; Cu Opt = 0

GMet (3DVar)

Init: 2026-04-29_06:00:00
Valid: 2026-04-30_03:00:00

Precipitation Tendency from 2026-04-30_02:00:00 to 2026-04-30_03:00:00 (mm)
Sea Level Pressure (hPa)

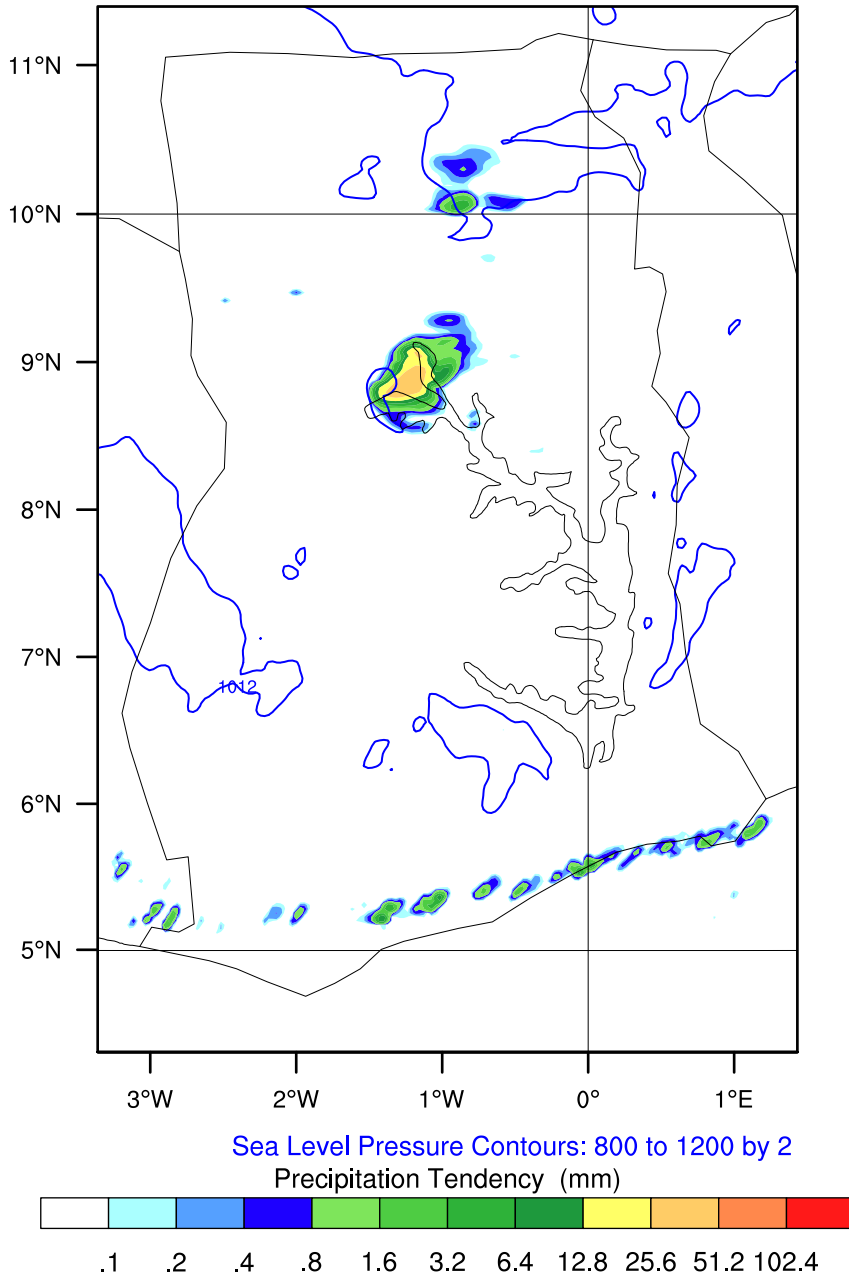


OUTPUT FROM WRF V4.6.1 MODEL
WE = 178 ; SN = 265 ; Levels = 40 ; Dis = 3km ; Phys Opt = 8 ; PBL Opt = 2 ; Cu Opt = 0

GMet (3DVar)

Init: 2026-04-29_06:00:00
Valid: 2026-04-30_04:00:00

Precipitation Tendency from 2026-04-30_03:00:00 to 2026-04-30_04:00:00 (mm)
Sea Level Pressure (hPa)

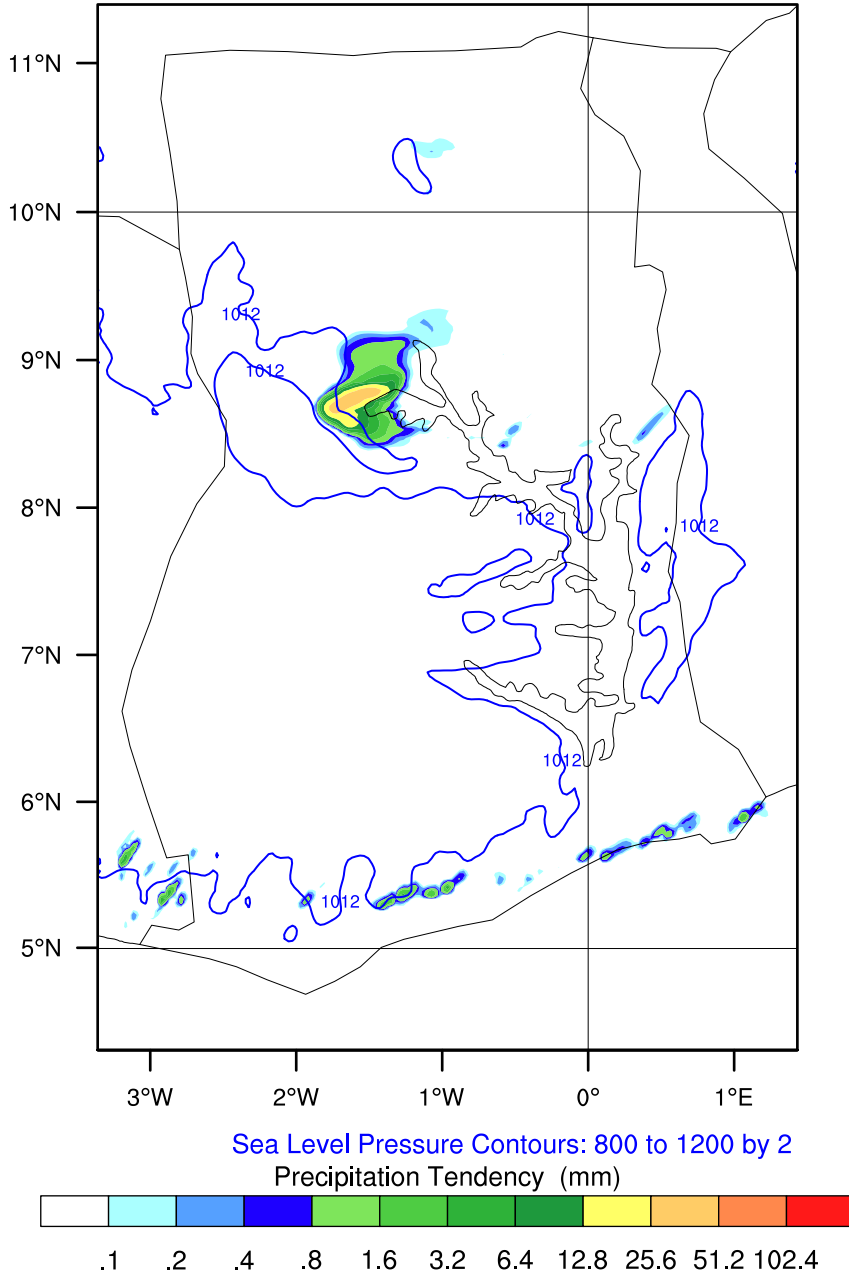


OUTPUT FROM WRF V4.6.1 MODEL
WE = 178 ; SN = 265 ; Levels = 40 ; Dis = 3km ; Phys Opt = 8 ; PBL Opt = 2 ; Cu Opt = 0

GMet (3DVar)

Init: 2026-04-29_06:00:00
Valid: 2026-04-30_05:00:00

Precipitation Tendency from 2026-04-30_04:00:00 to 2026-04-30_05:00:00 (mm)
Sea Level Pressure (hPa)

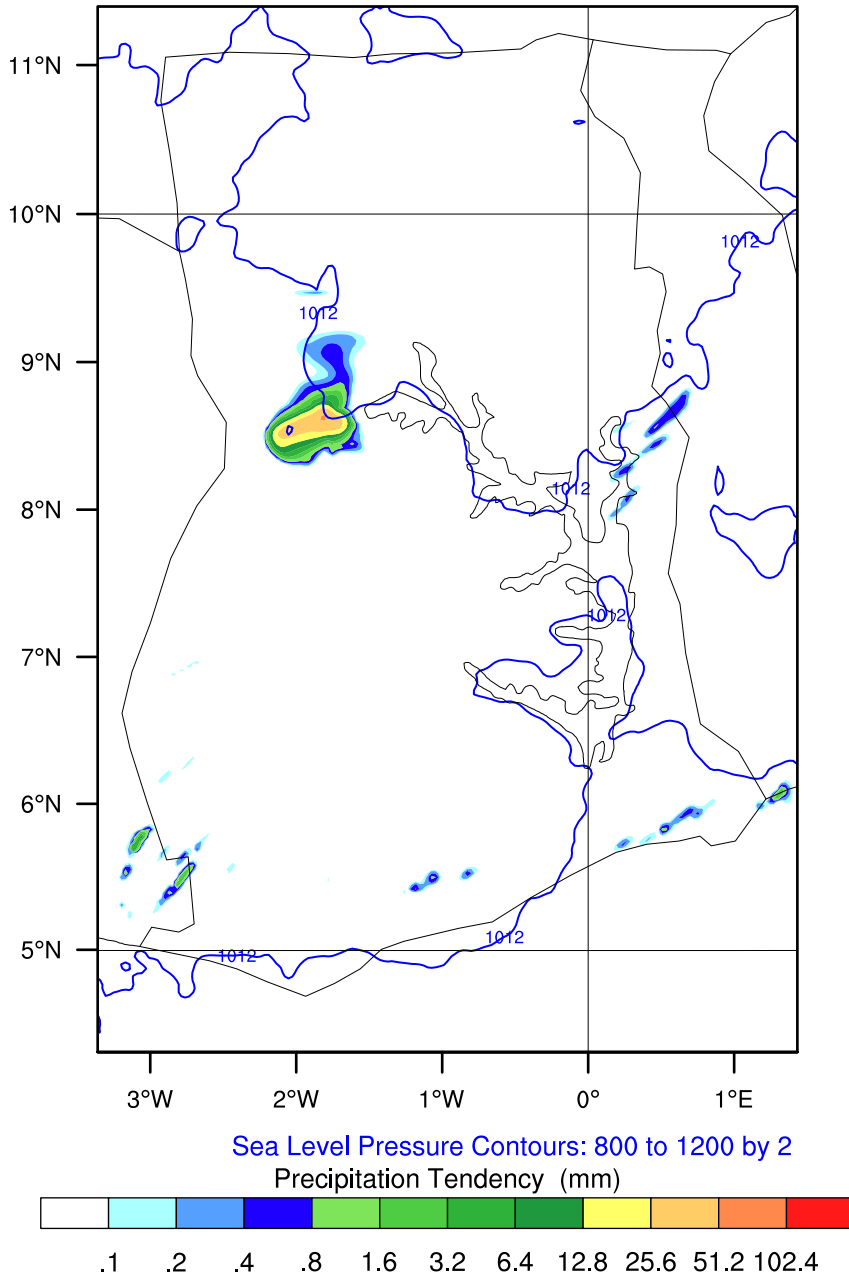


OUTPUT FROM WRF V4.6.1 MODEL
WE = 178 ; SN = 265 ; Levels = 40 ; Dis = 3km ; Phys Opt = 8 ; PBL Opt = 2 ; Cu Opt = 0

GMet (3DVar)

Init: 2026-04-29_06:00:00
Valid: 2026-04-30_06:00:00

Precipitation Tendency from 2026-04-30_05:00:00 to 2026-04-30_06:00:00 (mm)
Sea Level Pressure (hPa)

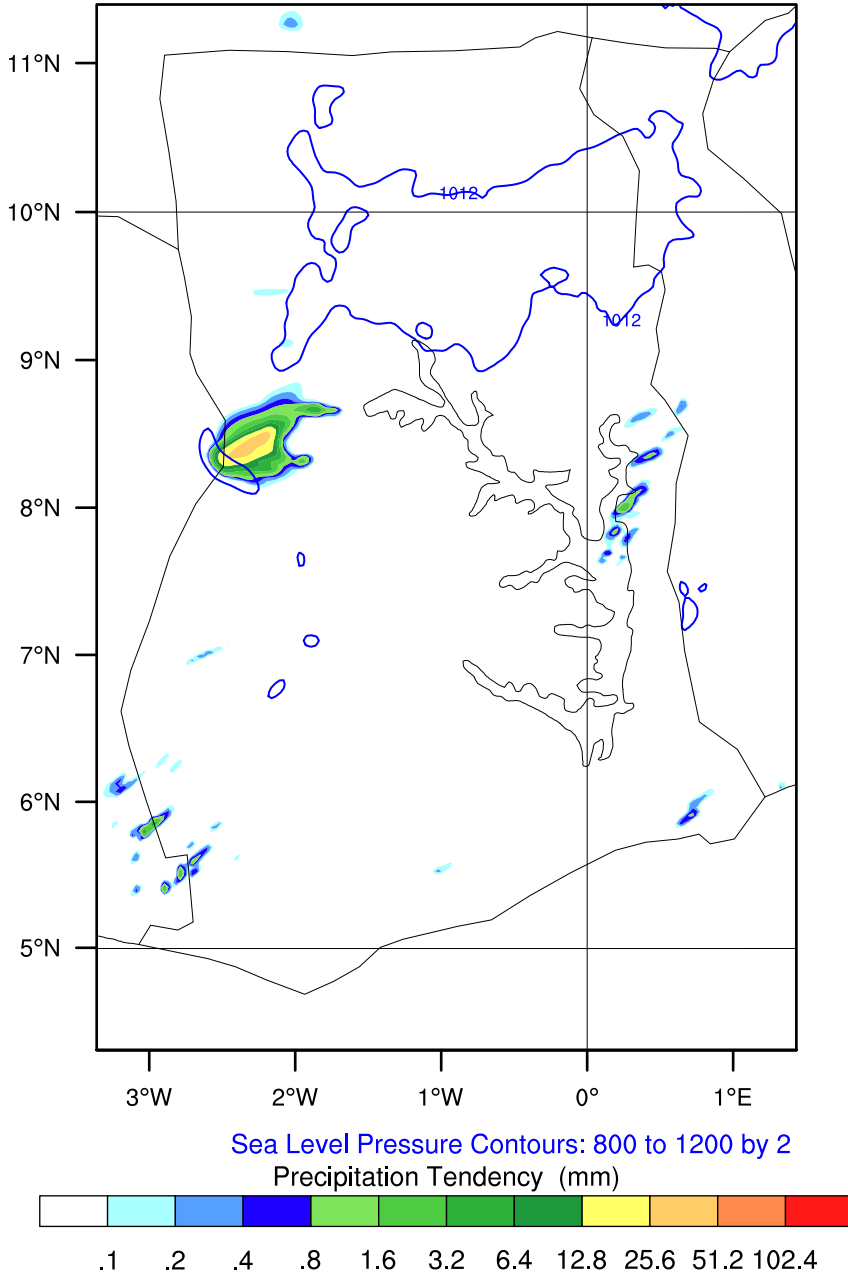


OUTPUT FROM WRF V4.6.1 MODEL
WE = 178 ; SN = 265 ; Levels = 40 ; Dis = 3km ; Phys Opt = 8 ; PBL Opt = 2 ; Cu Opt = 0

GMet (3DVar)

Init: 2026-04-29_06:00:00
Valid: 2026-04-30_07:00:00

Precipitation Tendency from 2026-04-30_06:00:00 to 2026-04-30_07:00:00 (mm)
Sea Level Pressure (hPa)

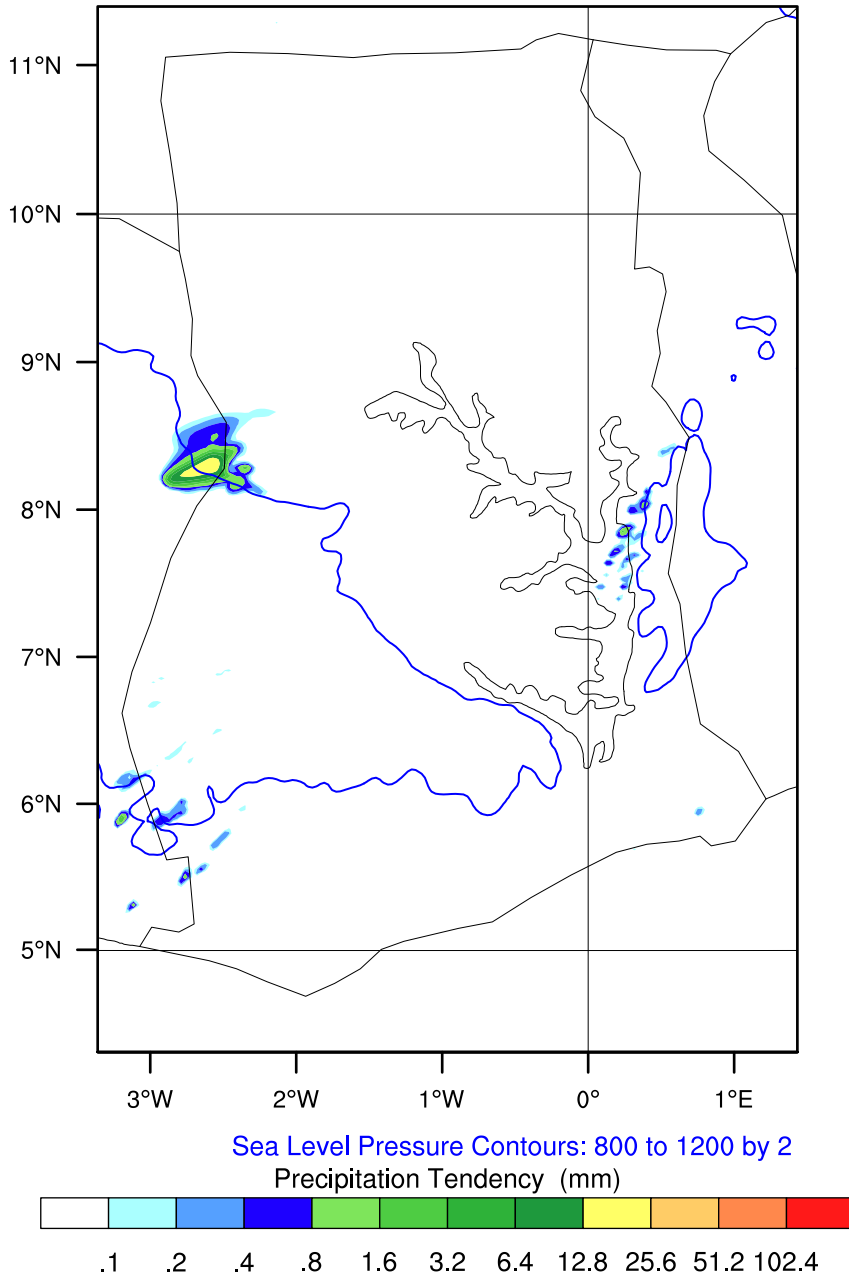


OUTPUT FROM WRF V4.6.1 MODEL
WE = 178 ; SN = 265 ; Levels = 40 ; Dis = 3km ; Phys Opt = 8 ; PBL Opt = 2 ; Cu Opt = 0

GMet (3DVar)

Init: 2026-04-29_06:00:00
Valid: 2026-04-30_08:00:00

Precipitation Tendency from 2026-04-30_07:00:00 to 2026-04-30_08:00:00 (mm)
Sea Level Pressure (hPa)

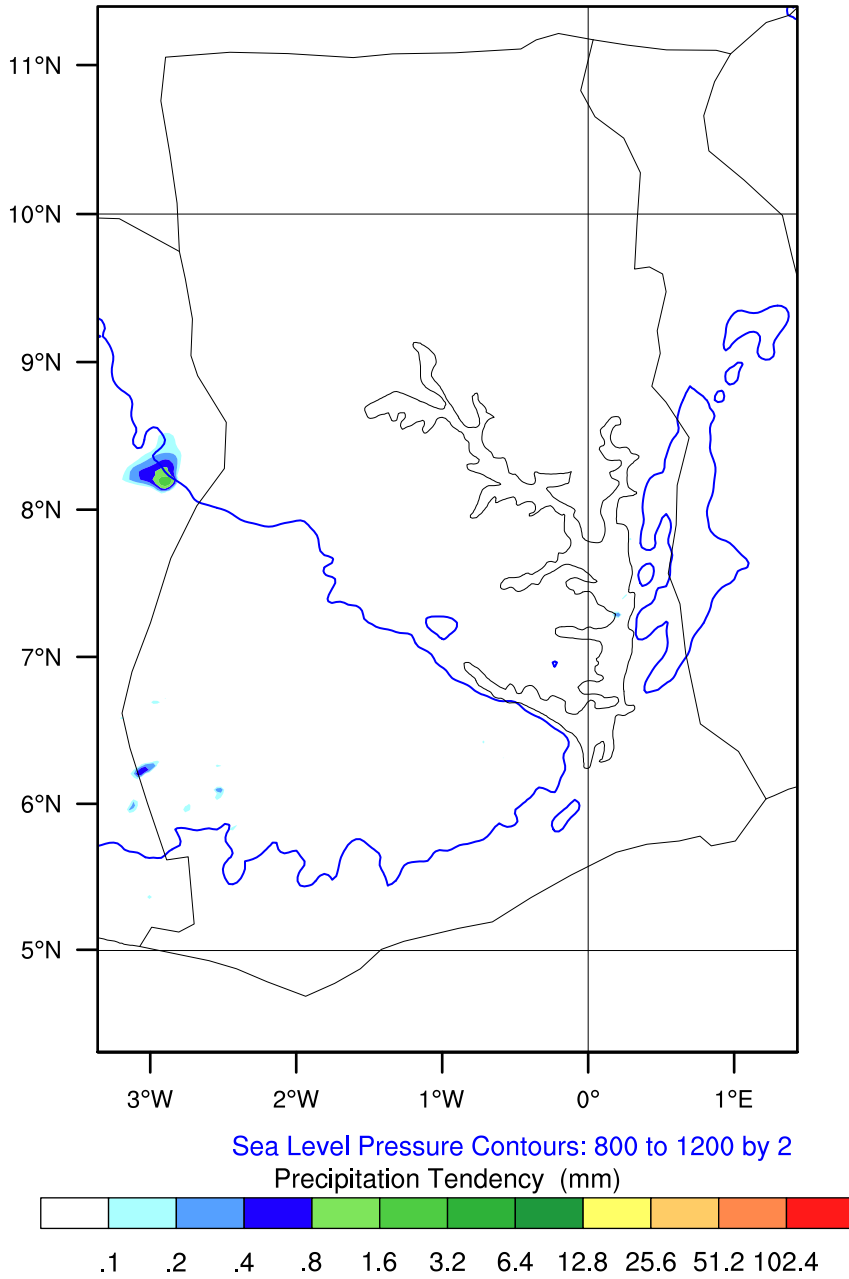


OUTPUT FROM WRF V4.6.1 MODEL
WE = 178 ; SN = 265 ; Levels = 40 ; Dis = 3km ; Phys Opt = 8 ; PBL Opt = 2 ; Cu Opt = 0

GMet (3DVar)

Init: 2026-04-29_06:00:00
Valid: 2026-04-30_09:00:00

Precipitation Tendency from 2026-04-30_08:00:00 to 2026-04-30_09:00:00 (mm)
Sea Level Pressure (hPa)

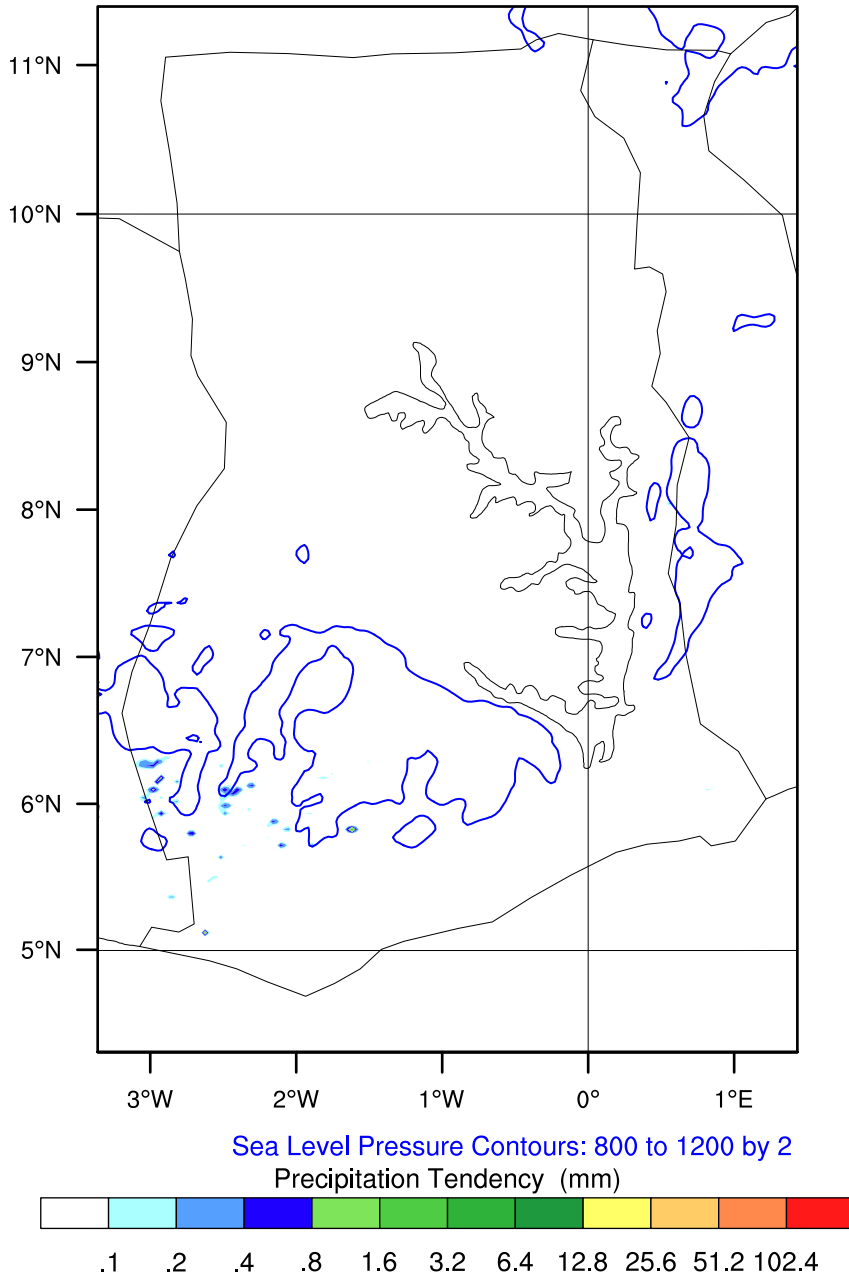


OUTPUT FROM WRF V4.6.1 MODEL
WE = 178 ; SN = 265 ; Levels = 40 ; Dis = 3km ; Phys Opt = 8 ; PBL Opt = 2 ; Cu Opt = 0

GMet (3DVar)

Init: 2026-04-29_06:00:00
Valid: 2026-04-30_10:00:00

Precipitation Tendency from 2026-04-30_09:00:00 to 2026-04-30_10:00:00 (mm)
Sea Level Pressure (hPa)

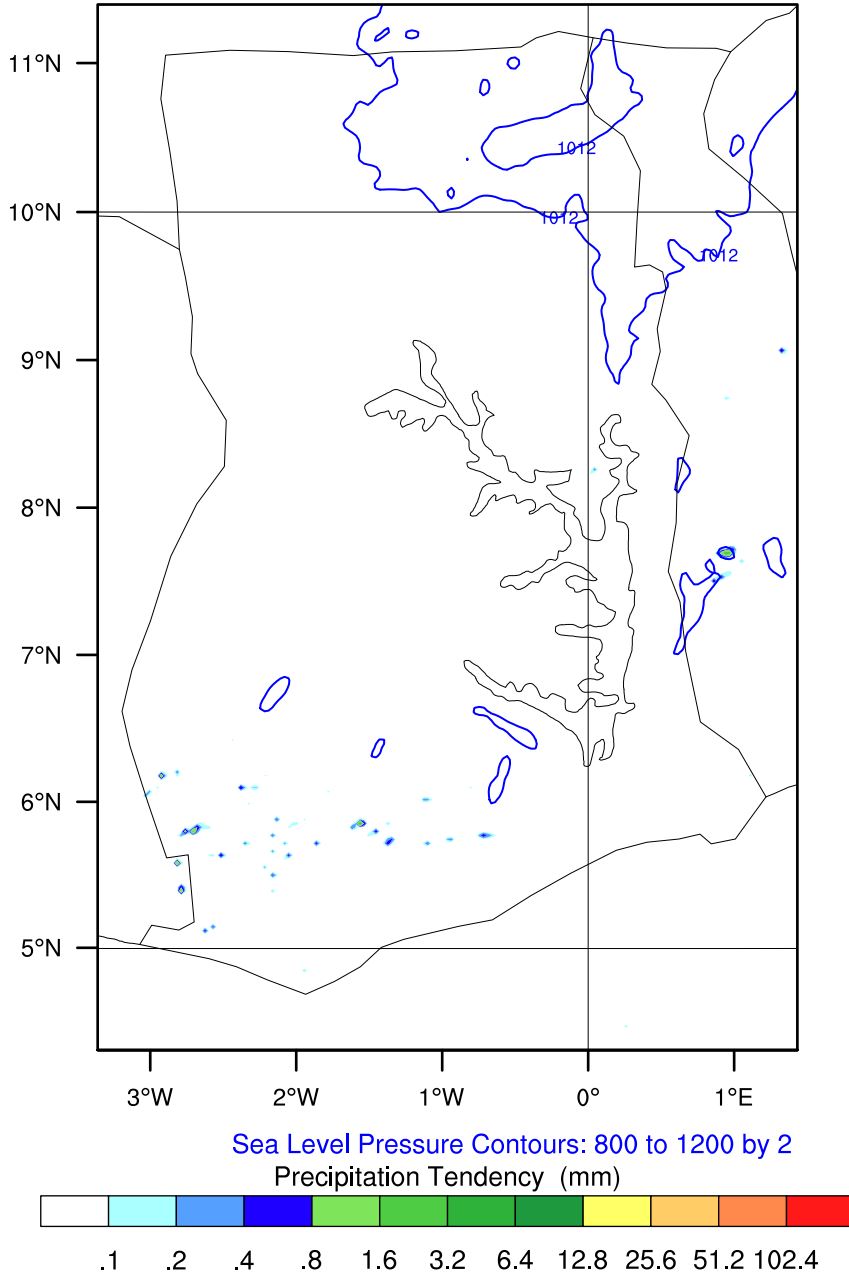


OUTPUT FROM WRF V4.6.1 MODEL
WE = 178 ; SN = 265 ; Levels = 40 ; Dis = 3km ; Phys Opt = 8 ; PBL Opt = 2 ; Cu Opt = 0

GMet (3DVar)

Init: 2026-04-29_06:00:00
Valid: 2026-04-30_11:00:00

Precipitation Tendency from 2026-04-30_10:00:00 to 2026-04-30_11:00:00 (mm)
Sea Level Pressure (hPa)

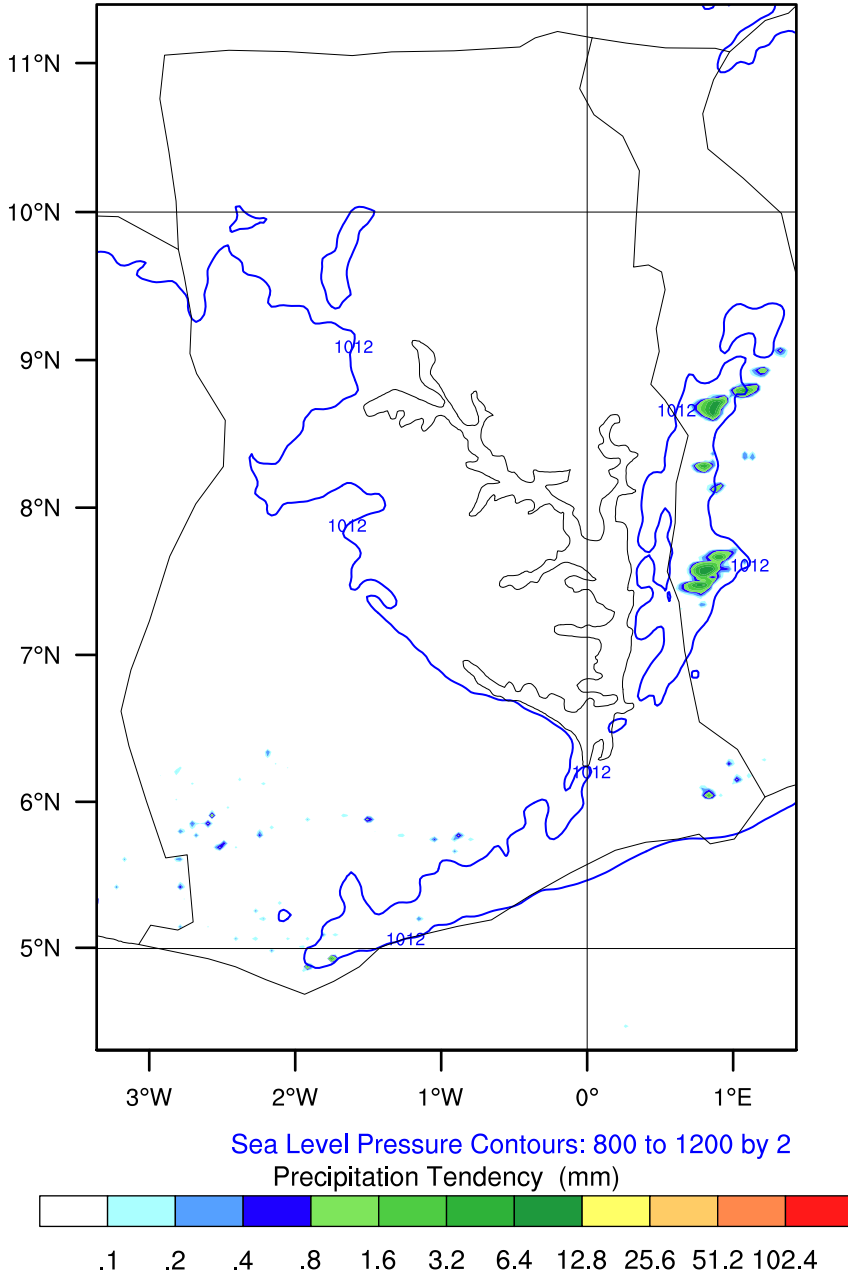


OUTPUT FROM WRF V4.6.1 MODEL
WE = 178 ; SN = 265 ; Levels = 40 ; Dis = 3km ; Phys Opt = 8 ; PBL Opt = 2 ; Cu Opt = 0

GMet (3DVar)

Init: 2026-04-29_06:00:00
Valid: 2026-04-30_12:00:00

Precipitation Tendency from 2026-04-30_11:00:00 to 2026-04-30_12:00:00 (mm)
Sea Level Pressure (hPa)



OUTPUT FROM WRF V4.6.1 MODEL
WE = 178 ; SN = 265 ; Levels = 40 ; Dis = 3km ; Phys Opt = 8 ; PBL Opt = 2 ; Cu Opt = 0