

2026

# CLIMATE BULLETIN



DEKAD 1, APRIL (01-10)

GMET/CLIMATE/030325

FORM337

4/1/2026

# TABLE OF CONTENT

LIST OF FIGURES .....	iii
SUMMARY .....	1
1.OBSERVED CLIMATE DRIVERS .....	1
1.1 INTERTROPICAL FRONT .....	1
1.2 MADDEN-JULIAN OSCILLATION (MJO) .....	3
2.0 RAINFALL, TEMPERATURE AND RELATIVE DISTRIBUTION .....	4
2.1 RAINFALL .....	4
2.2 TEMPERATURE .....	6
3.0 RAINFALL AND TEMPERATURE OUTLOOK 1 <sup>ST</sup> - 14 <sup>TH</sup> APRIL 2025 .....	8
.....	9
4.0 ADVISORIES .....	9
5.0 APPENDIX .....	10
5.1 TABLE OF STATIONS .....	10



## LIST OF FIGURES

1	
FIGURE 1. CURRENT ITF POSITION FOR MARCH 3RD DEKAD, 2026.....	2
TABLE 1. DEKADAL EVOLUTION OF THE ITF POSITION OVER GHANA 2026. ....	3
FIGURE 2. CURRENT MJO POSITION AS OF APRIL 1ST DEKAD, 2026 .....	3
FIGURE 3A. TOTAL RAINFALL APRIL APRIL 1 <sup>ST</sup> DEKAD, 2026 .....	4
FIGURE 3B. RAINY DAYS APRIL 1ST DEKAD, 2026.....	4
FIGURE 4. TAMSAT TOTAL RAINFALL APRIL 1ST DEKAD, 2026 .....	5
FIGURE 5: RAINFALL ANOMALY FOR APRIL 1 <sup>ST</sup> DEKAD, 2026 .....	5
FIGURE 6A. MAXIMUM TEMPERATURE APRIL 1ST DEKAD, 2026 .....	6
FIGURE 6B. MAXIMUM TEMPERATURE ANOMALY APRIL 1ST DEKAD, 2026 .....	6
FIGURE 7A. MINIMUM TEMPERATURE APRIL 1 <sup>ST</sup> DEKAD, 2026.....	7
FIGURE 7B. MINIMUM TEMPERATURE ANOMALY APRIL 1 <sup>ST</sup> DEKAD, 2026 .....	7
FIGURE 8. MAX. AND MIN. TEMPERATURE DISTRIBUTION FOR APRIL DEKAD, 2026 .....	8



## SUMMARY

- **Rainfall:**
  - Most areas received rainfall between 20mm and 50mm
  - Half Assini received the highest rainfall of 110.4 mm.
  - : Highest rainy days was 8 days
- **Rainfall Anomalies:**
  - Deficit rainfall in most areas.
  - Western portion experienced surplus rainfall.
- **Temperatures:**
  - **Maximum:**
    - Above normal temperatures in the northern and parts of the Transition zone.
    - The maximum of the Maximum temperature of 39.76°C was recorded in Navrongo
    - Relatively cooler temperatures along the coast and in some forested areas.
  - **Minimum:**
    - Warmer temperatures in the Northern Zone
    - Relatively above normal temperatures for most parts of the country
    - The minimum of the Minimum temperature was recorded in Abetifi, reaching 21.27°C.

## 1.OBSERVED CLIMATE DRIVERS

### 1.1 INTERTROPICAL FRONT

Also known as the Intertropical Convergence Zone (ITCZ) is a critical meteorological feature that significantly influences weather patterns in West Africa, including Ghana. The ITF is a boundary zone where the warm, moist air from the Atlantic Ocean (southwesterly monsoon winds) meets the hot, dry air from the Sahara Desert (northeasterly Harmattan winds). This convergence leads to the formation of clouds and precipitation, making it a key driver of the rainy season in West Africa. The northward movement of the ITF during March-July brings the rainy season to Ghana.

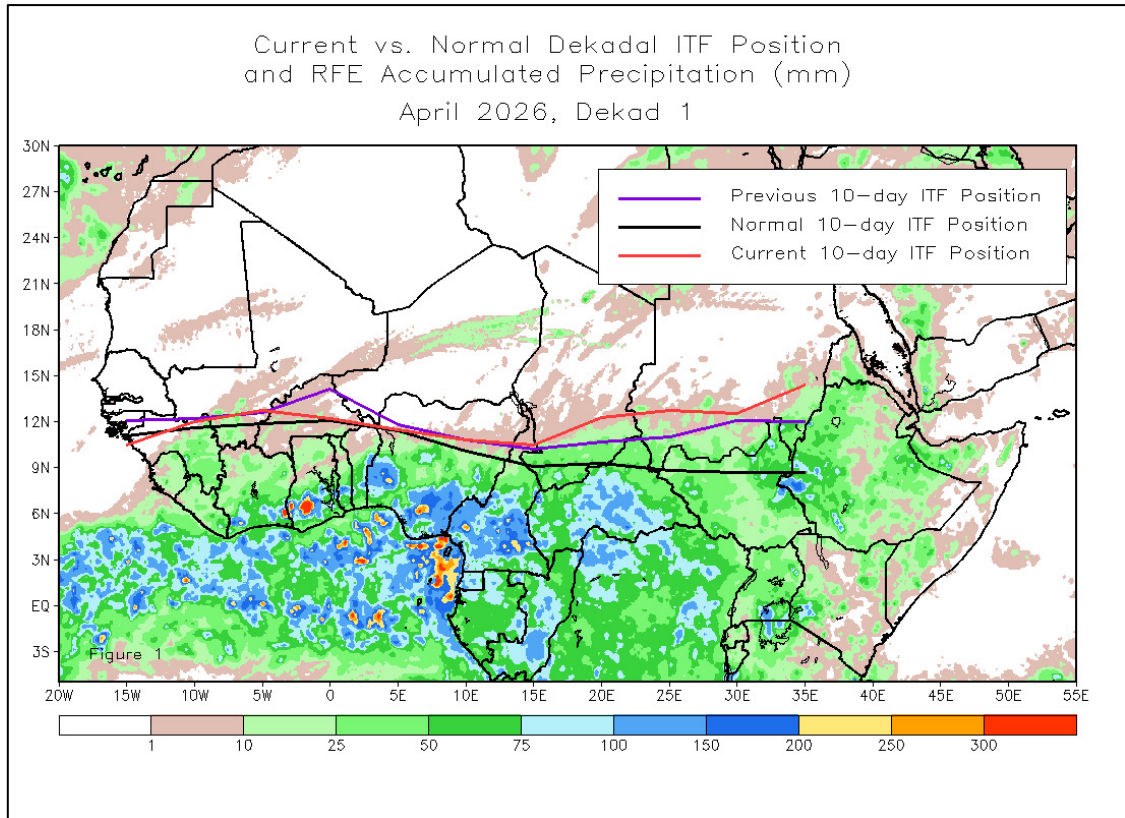


Figure 1. Current ITF position for April 1<sup>st</sup> Dekad, 2026

For April 2026, Dekad 1, the map (*Figure 1*) shows Current 10-day ITF position (red) compared with the previous 10-day ITF position (purple) and the normal 10-day ITF position (black), along with accumulated precipitation. Previously, the ITF was positioned at 11.5N farther north across parts of West/Central Africa. Currently, the ITF has shifted southward relative to the previous dekad, now lying closer to the southern Sahel at 11N. 12. Similarly, *Table 1* below also shows the evolving ITF's position of Ghana, located between 5W and 5E.

DEKAD	5W	0	5E
January 1	7.2	7.6	7.8
January 2	7.3	7.8	7.5
January 3	7.9	8.2	8.5
February 1	6.6	8.1	8.3
February 2	9.6	9.0	8.8
February 3	8.2	9.2	8.9
March 1	11.0	10.5	10.1
March 2	10.0	9.8	9.6
March 3	11.6	11.6	11.2
April 1	12.7	12.2	11.5

Table 1. Dekadal evolution of the ITF position over Ghana 2026.

## 1.2 MADDEN-JULIAN OSCILLATION (MJO)

MJO is a tropical disturbance that moves eastward around the globe, influencing weather patterns, including rainfall and temperature, in various regions. The MJO has phases (1-8), with each phase corresponding to its location over the tropics. Its position and strength can have significant implications for weather in Ghana, particularly during the West African monsoon season.

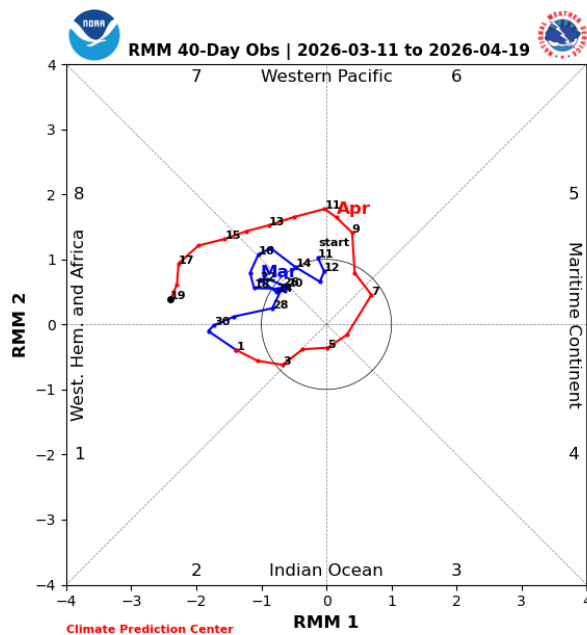


Figure 2. Current MJO position as of April 1st Dekad, 2026

As depicted in Figure 2, the Madden-Julian Oscillation (MJO) was observed between Phases 1 and 3, corresponding to the Maritime Continent and Western Pacific regions. However, its position near the centre of the phase-space diagram indicates a weak amplitude, signifying a less active MJO signal during this period.

Given its current phase and weak intensity, the MJO was unlikely to significantly enhance convective activity over West Africa. This may have contributed to the suppression of rainfall

over Ghana in the short term, as the influence of the MJO during weak phases tends to be minimal across the region.

## 2.0 RAINFALL, TEMPERATURE AND RELATIVE DISTRIBUTION

### 2.1 RAINFALL

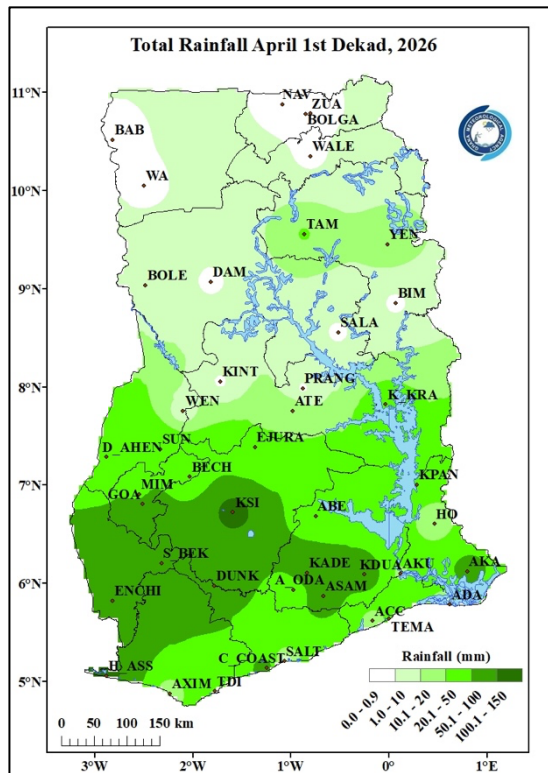


Figure 3a. Total Rainfall April 1st Dekad, 2026

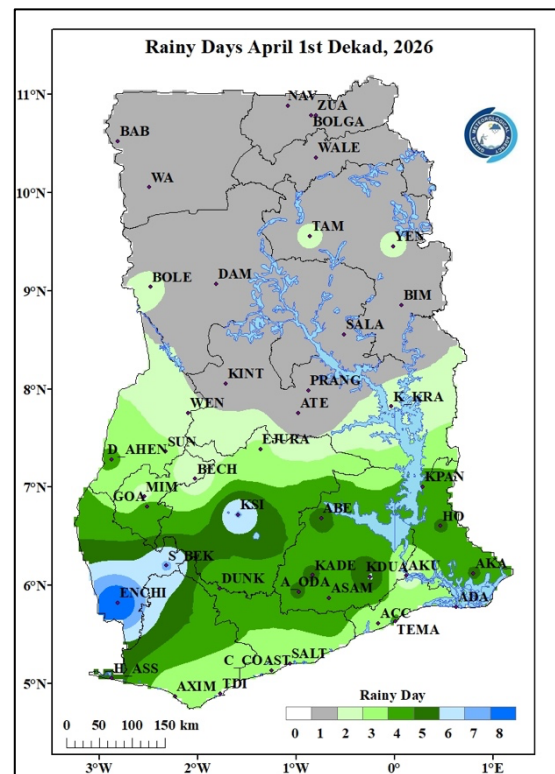


Figure 3b. Rainy Days April 1<sup>st</sup> Dekad, 2026

Figure 3a shows total rainfall during April 1st dekad (2026) across Ghana, with rainfall amounts ranging from about 0–150 mm. The highest rainfall is mainly in the central–western and parts of the mid/high forest belt, while the lowest amounts occur in the northern regions, indicating a northward decrease in dekad rainfall.

Figure 3b illustrates the frequency of rainy days within the same period. Most areas across Northern Ghana recorded one rainy day. For southern Ghana, the rainy days recorded ranged from two (2) to eight (8). However, like the rainfall distribution, only few locations did not record any rainy days during this dekad.

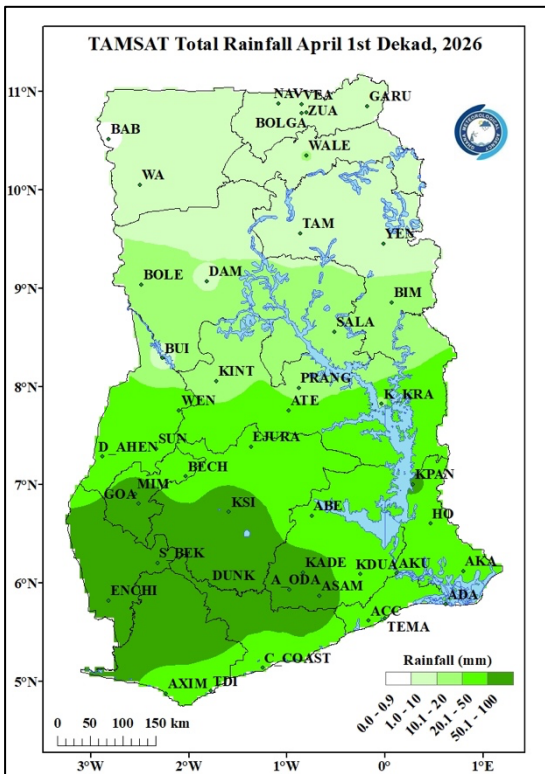


Figure 4 presents total rainfall for the duration, as calculated from the TAMSAT rainfall estimates. Except for a few places like Koforidua where this satellite-based data overestimated, almost all places reflected the ground-based data results. The southern and coastal zones recorded the highest totals (20–100 mm), particularly across the forest belt and parts of the southwest, indicating active rainfall conditions. The middle belt experienced moderate rainfall (10–50 mm), reflecting the gradual northward progression of the rainy season.

Figure 4. TAMSAT Total Rainfall April 1st Dekad, 2026

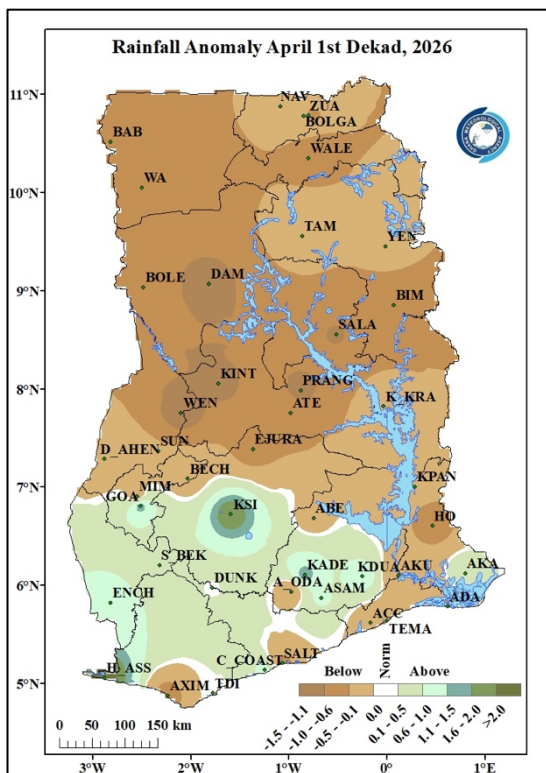


Figure 5 highlights areas across the country that experienced deviations from normal rainfall during the reporting period. Notably, most locations spanning from the North to the Transition sector recorded deficit rainfall. In contrast, the western parts of the country generally experienced surplus rainfall.

Figure 5: Rainfall Anomaly for April 1st Dekad, 2026

## 2.2 TEMPERATURE

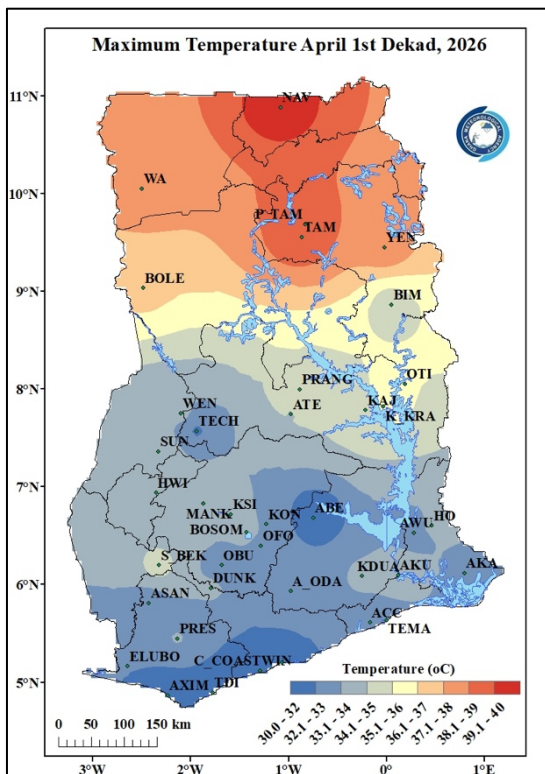


Figure 6a. Maximum Temperature April 1st Dekad, 2026

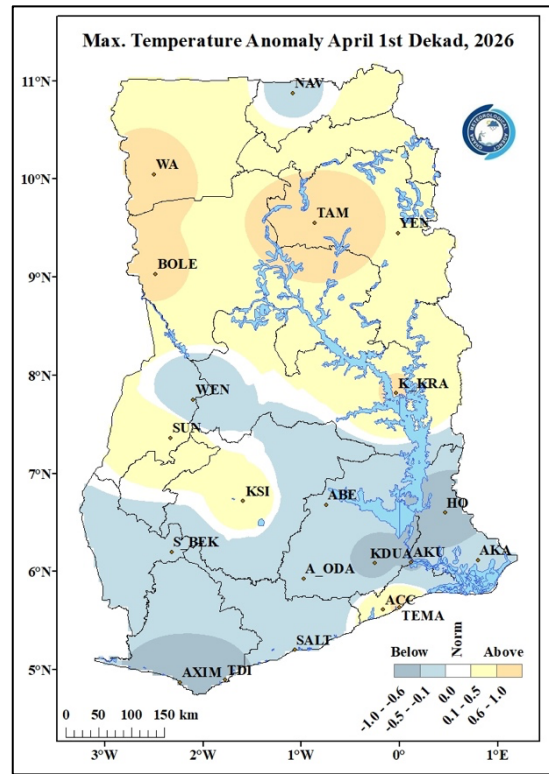


Figure 6b. Maximum Temperature Anomaly April 1st Dekad, 2026

Figure 6a displays the distribution of average Maximum temperatures across the country. During the reporting period, the northern belt of Ghana recorded the highest temperatures, ranging from 36.0°C to 40.0°C. The highest temperature, 39.76°C, was observed in Navrongo, while the lowest, 30.27°C, was recorded in Abetifi. In the transition zone, temperatures ranged between 30.0°C and 36.0°C, whereas the entire southern sector experienced relatively cooler conditions, with temperatures ranging from 31.0°C to 34.0°C.

Figure 6b illustrates the Maximum Temperature Anomalies across the country. Areas along the coast and parts of the forest zone exhibited below-normal temperatures, except for Kumasi and Accra, which recorded above-normal temperatures. Additionally, locations in the northern sector experienced above-normal maximum temperatures, indicating localized warmer-than-average conditions for this time of year.

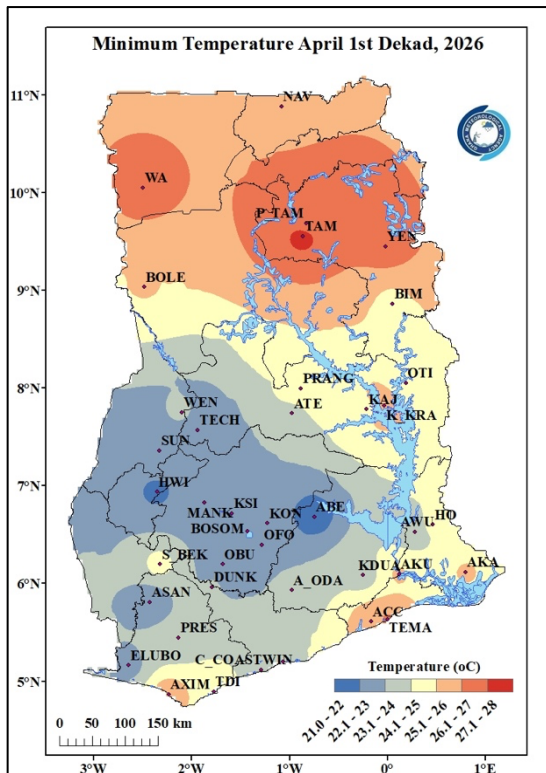


Figure 7a. Minimum Temperature April 1<sup>st</sup> Dekad, 2026

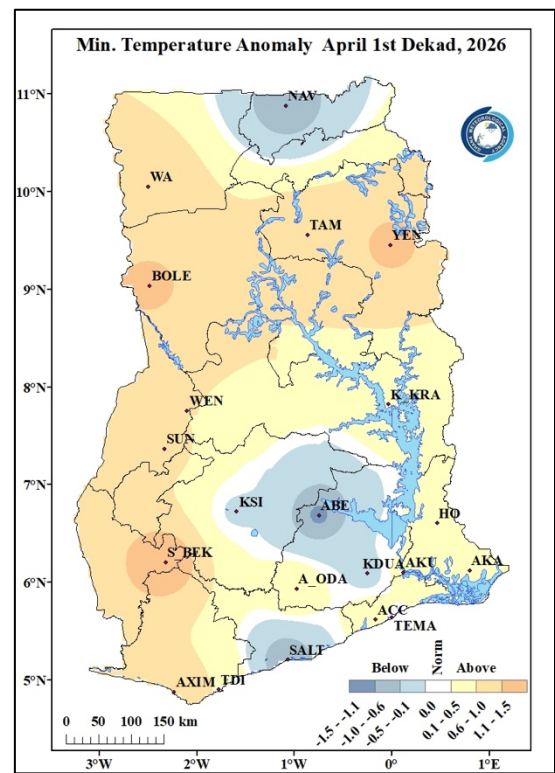


Figure 7b. Minimum Temperature Anomaly April 1<sup>st</sup> Dekad, 2026

In Figure 7a, the average minimum temperatures varied across different regions. The Northern zones and areas along the coast of the country (Yendi, Wa, Tamale, Yendi, Pong Tamale and Bimbila) experienced relatively warmer temperatures, with average values ranging from 25°C to 28.0°C. In contrast, the remaining portions areas such as Sunyani, Abetifi, Kumasi to mention a few experienced relatively cooler average nighttime temperatures ranging from 21.0°C to 24.0°C. The lowest average nighttime temperature was recorded in Abetifi in the Forest zone, reaching 21.27°C.

In figure 7b, we see the Minimum Temperature Anomaly. It is evident that, most parts of the country experienced above normal temperatures indicating increasing nighttime temperatures. However, areas such as Saltpond, Abetifi, Kumasi, Navrongo experienced below normal minimum temperatures.

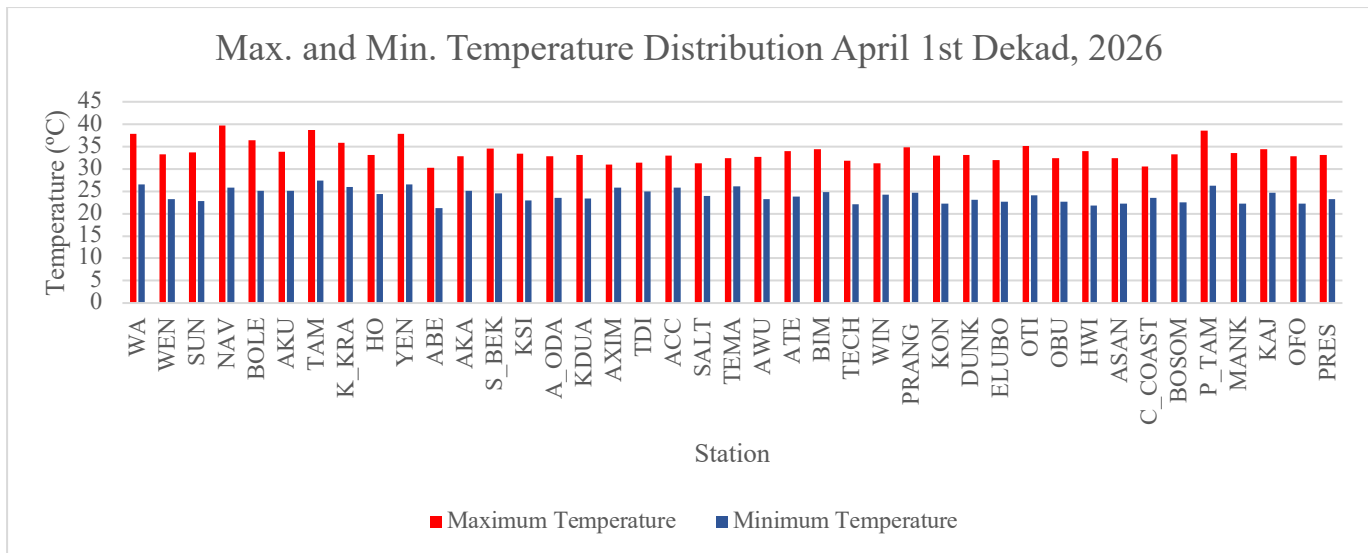
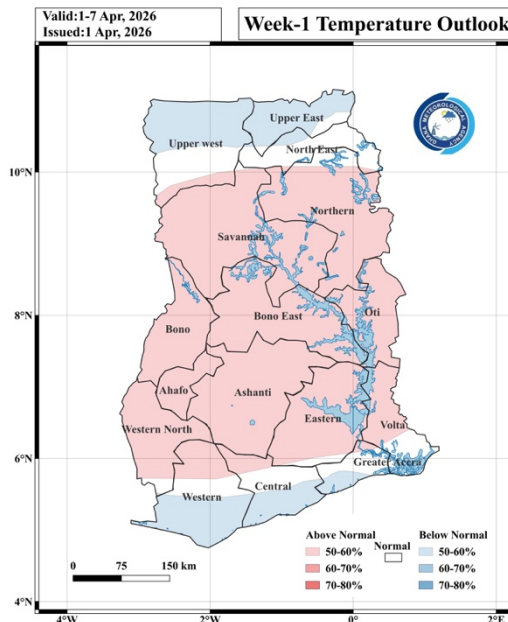
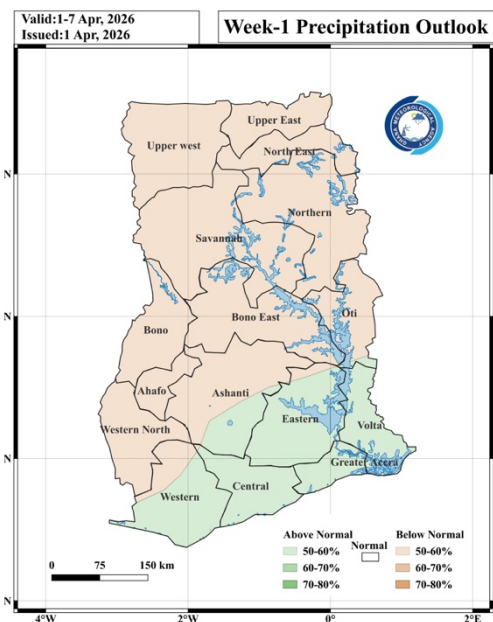
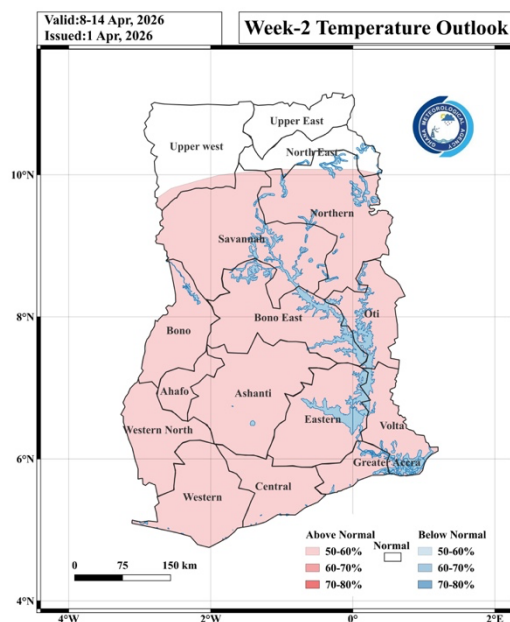
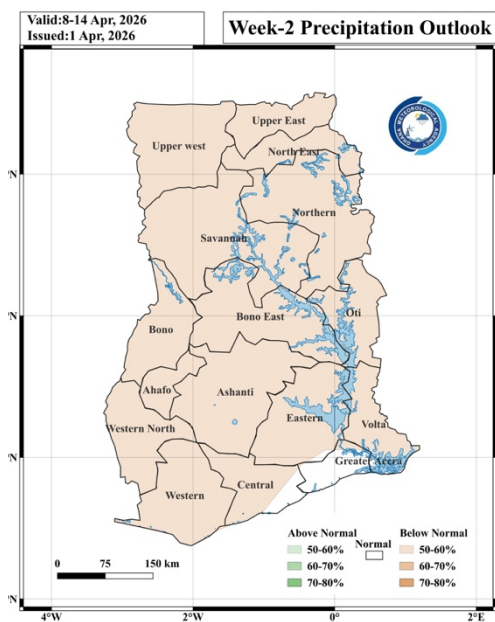


Figure 8. Max. and Min. Temperature Distribution for April 1<sup>st</sup> Dekad, 2026

### 3.0 RAINFALL AND TEMPERATURE OUTLOOK 1<sup>ST</sup>- 14<sup>TH</sup> APRIL 2026

Week 1 is expected to bring above-normal rainfall to the southern regions, accompanied by above-normal temperatures across the country. In Week 2, rainfall is projected to be below-normal across the country, while temperatures are projected to be above-normal across the country.





## 4.0 ADVISORIES

### 1. Health Sector

- Increased temperatures may lead to dehydration and heat stress.
- Be cautious of heat-related illnesses, especially for vulnerable groups (elderly, children, and those with chronic illnesses) due to high daytime temperatures particularly in the Northern belt.

### 2. Water Resources Management Sector

- Conserve water and use it efficiently, especially in regions with less rainfall (Northern sector).
- 

### 3. General Public

- Above-Normal Temperatures (Nationwide). The public should limit outdoor activities during peak heat hours (11 am to 4 pm).
- The use of fans or air conditioning where available to stay cool
- Stay hydrated, avoid prolonged sun exposure, and wear light clothing.
- Stay updated on weather forecasts from the Ghana Meteorological Agency.

## 5.0 APPENDIX

### 5.1 TABLE OF STATIONS

STATIONS	Abreviation	STATIONS	Abreviation	STATIONS	Abreviation
Abetifi	ABE	Bui	BUI	Salaga	SALA
Accra	ACC	Cape Coast	C. COAST	Saltpond	SALT
Ada	ADA	Damongo	DAM	Sefwi Bekwai	S. BEK
Agona Kwanyako	AG. KWA	Dorma Ahenkro	D. AHEN	Sefwi Wiawso	S. WIAW
Agona Swedro	AG. SWE	Duayaw Nkwanta	D. NKWA	Sunyani	SUNY
Akatsi	AKA	Dunkwa	DUNK	Techiman	TECH
Akim Oda	AK. ODA	Goaso	GOA	Tafo	TAFO
Akropong Akwapim	A. Akwap	Ho	HO	Takoradi	TADI
Akuse	AKU	Kade	KADE	Tamale	TAMA
Asamankese	ASAM	Kete Krachi	K. KRA	Tarkwa	TARK
Asankragwa	ASANK	Kintampo	KINT	Tema	TEMA
Atebubu	ATE	Koforidua	KOF	Twifo Praso	T. PRA
Atieku	ATIEKU	Kpando	KPAN	Veve Dam	VEA
Axim	AXIM	Kumasi	KSI	Wa	WA
Babile	BABILE	Manga Bawku	M. BAWKU	Walewale	WALE
Bechem	BECH	Mim	MIM	Wamfie	WAMF
Bibiani	BIB	Navrongo	NAV	Wassaw Akropong	W. AKR
Bimbila	BIMB	Nsoatre	NSOA	Wenchi	WEN
Bole	BOLE	Obuasi	OBUASI	Winneba	WINN
Bolgatanga	BOLGA	Pong Tamale	P. TAM	Yendi	YEN
Bompata	BOMPA	Prang	PRANG	Zuarungu	ZUA
Breman Asikuma	B. ASIK				

**For further inquiries, clarification, information or assistance**

**Contact:**

**The Director General**

**Tel. +233 (0)30 701 0019 or [clients@meteo.gov.gh](mailto:clients@meteo.gov.gh)/[info@meteo.gov.gh](mailto:info@meteo.gov.gh)**