

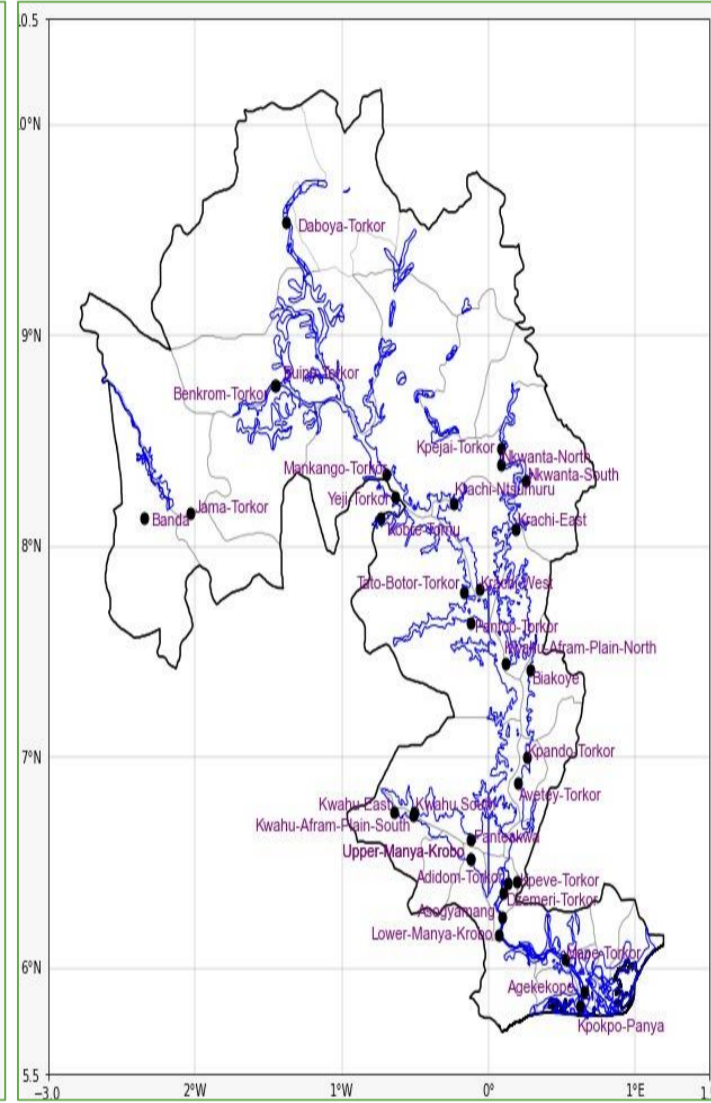
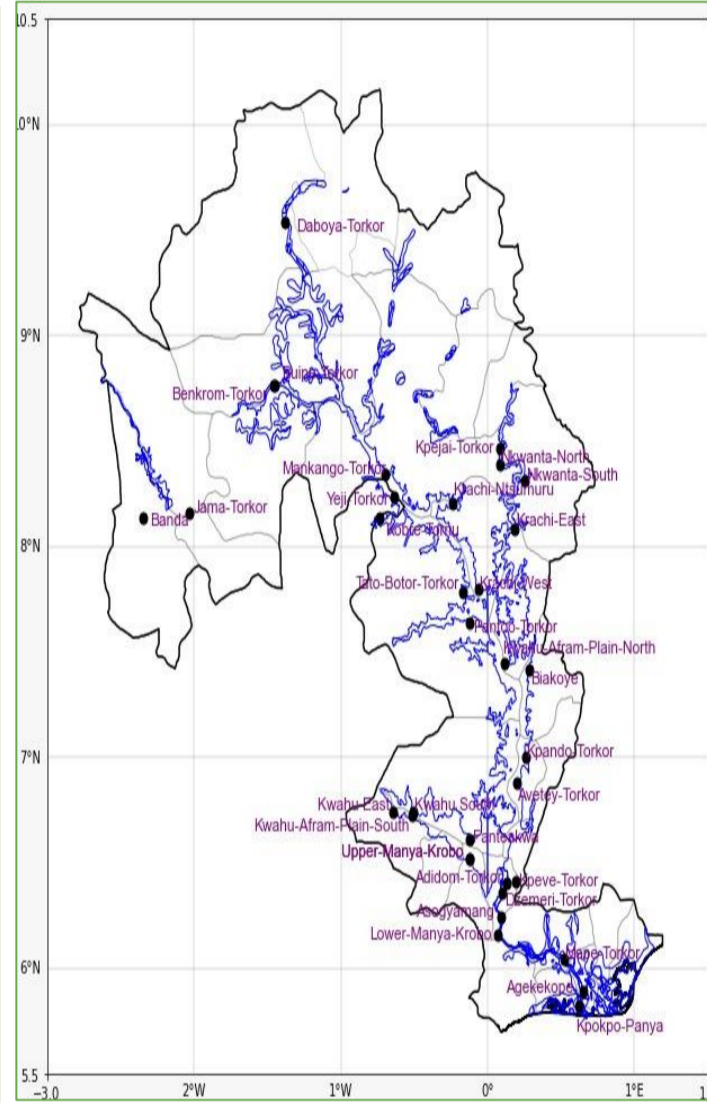
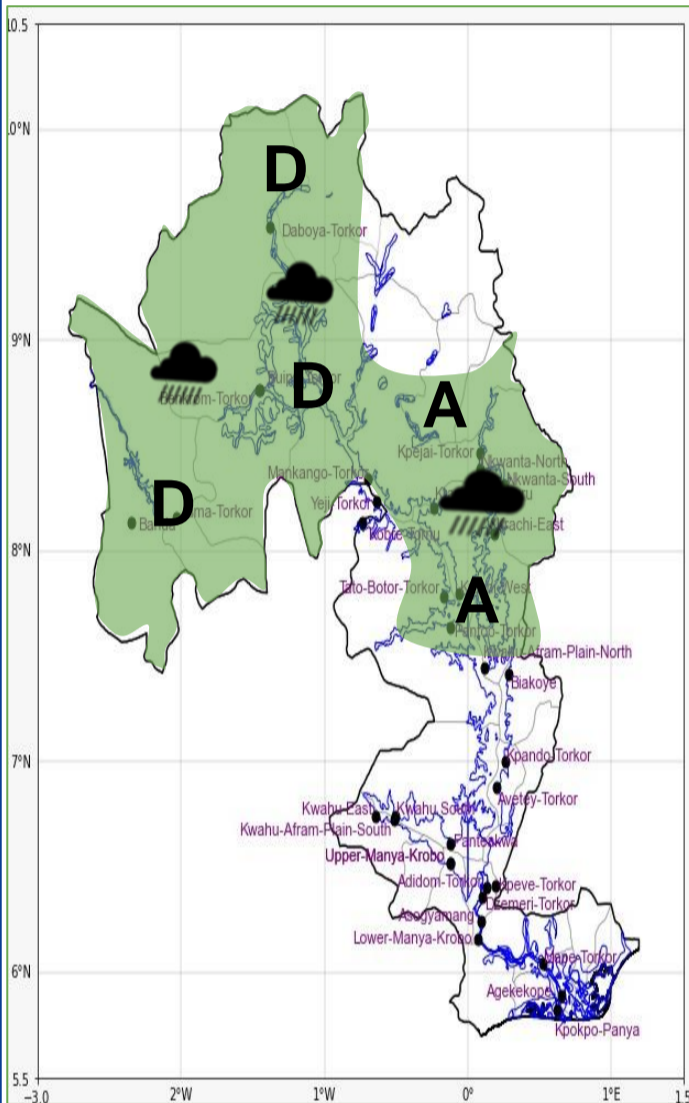


## INLAND WATER IMPACT-BASED FORECAST

### WEATHER SUMMARY

Generally cloudy conditions are expected across the lake area, with clouds likely to produce light to moderate rain, accompanied by thunder at times, over most parts, particularly the western north, throughout the night into the early morning hours. By late morning, skies will remain mostly cloudy, with patches of mist likely to reduce visibility in vegetated areas.

EVENING (02/05/2026)	MORNING (03/05/2026)	AFTERNOON (03/05/2026)
----------------------	----------------------	------------------------



**Weather Icons**

- Rain
- Wind
- Dust
- Hail

Date
02/05/2026
Time Issued
4:00 PM
Valid From
06:00 PM
Nowcasting Risk
<b>Take Action</b>
<b>Be aware</b>
<b>Low risk</b>
<b>No risk</b>

Weather Forecast Risk Table				
Likelihood ↑	High (>60%)	G	H	I
	Medium (40%-60%)	D	E	F
	Low (<40%)	A	B	C
		Low	Medium	High
		Impact →		

Time	Surface Wind	Visibility	Temperature
12 hours	S/SE 05 Max 21 kt	(5 – 10) km	(24 – 39) °C
24 hours	SE/SW 05 Max 20 kt	(4 – 10) km	(23 – 39) °C