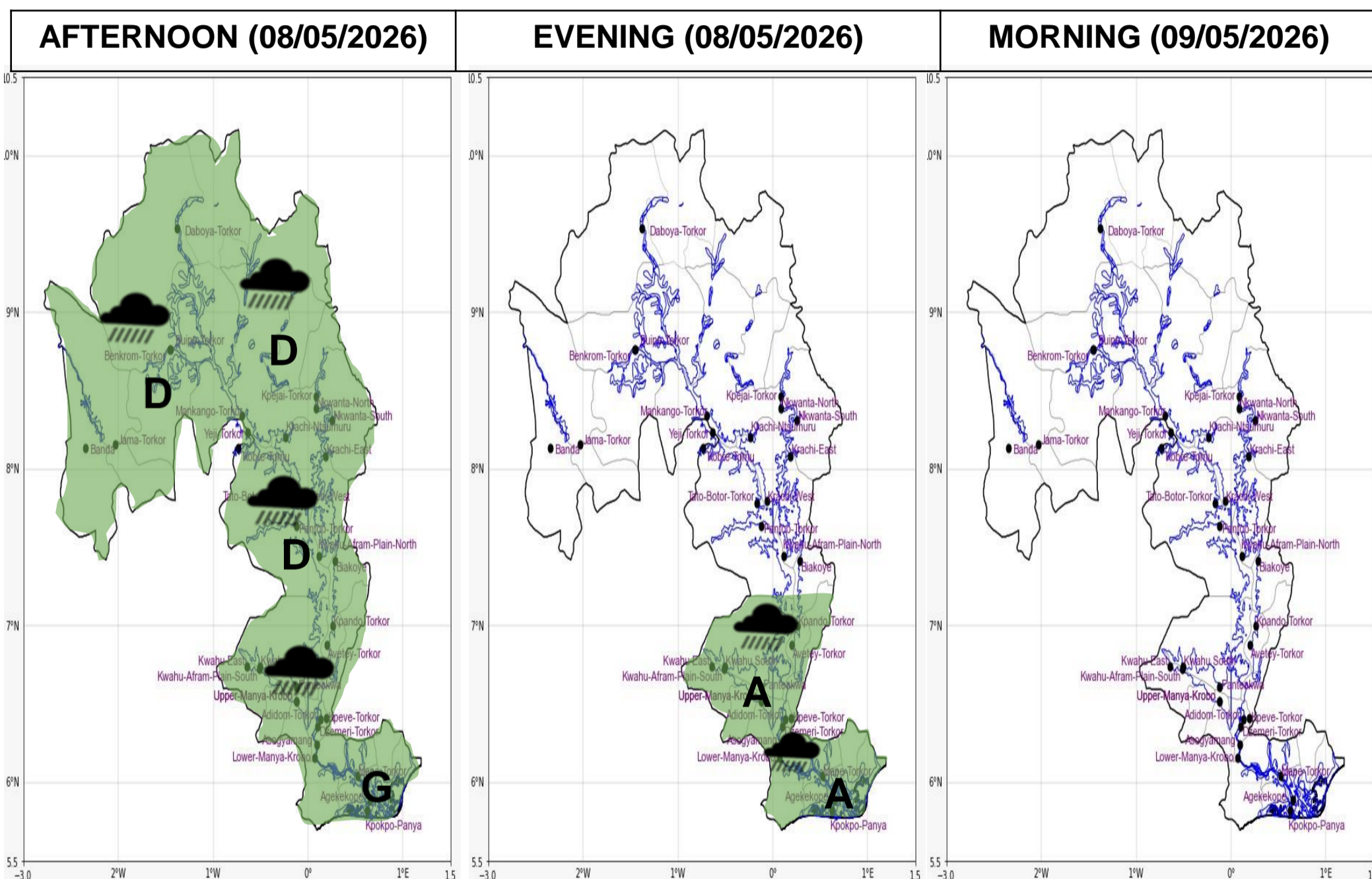




INLAND WATER IMPACT-BASED FORECAST

WEATHER SUMMARY

Mostly cloudy weather conditions are expected throughout the forecast period. However, there is a 40-60% chance of intermittent light to moderate rain, along with thunderstorms, from this afternoon into the evening across the lake and its environs.



Date
08/05/2026
Time Issued
10:00 AM
Valid From
12:00 PM
Nowcasting Risk
Take Action
Be aware
Low risk
No risk

Likelihood ↑	Weather Forecast Risk Table			
	High (>60%)	G	H	I
	Medium (40%-60%)	D	E	F
Low (<40%)	A	B	C	
	Low	Medium	High	
	Impact →			

Time	Surface Wind	Visibility	Temperature
12 hours	S/SW 08 Max 20 kt	(5 – 10) km	(25 – 32) °C
24 hours	S/SW 05 Max 18 kt	(5 – 10) km	(24 – 31) °C