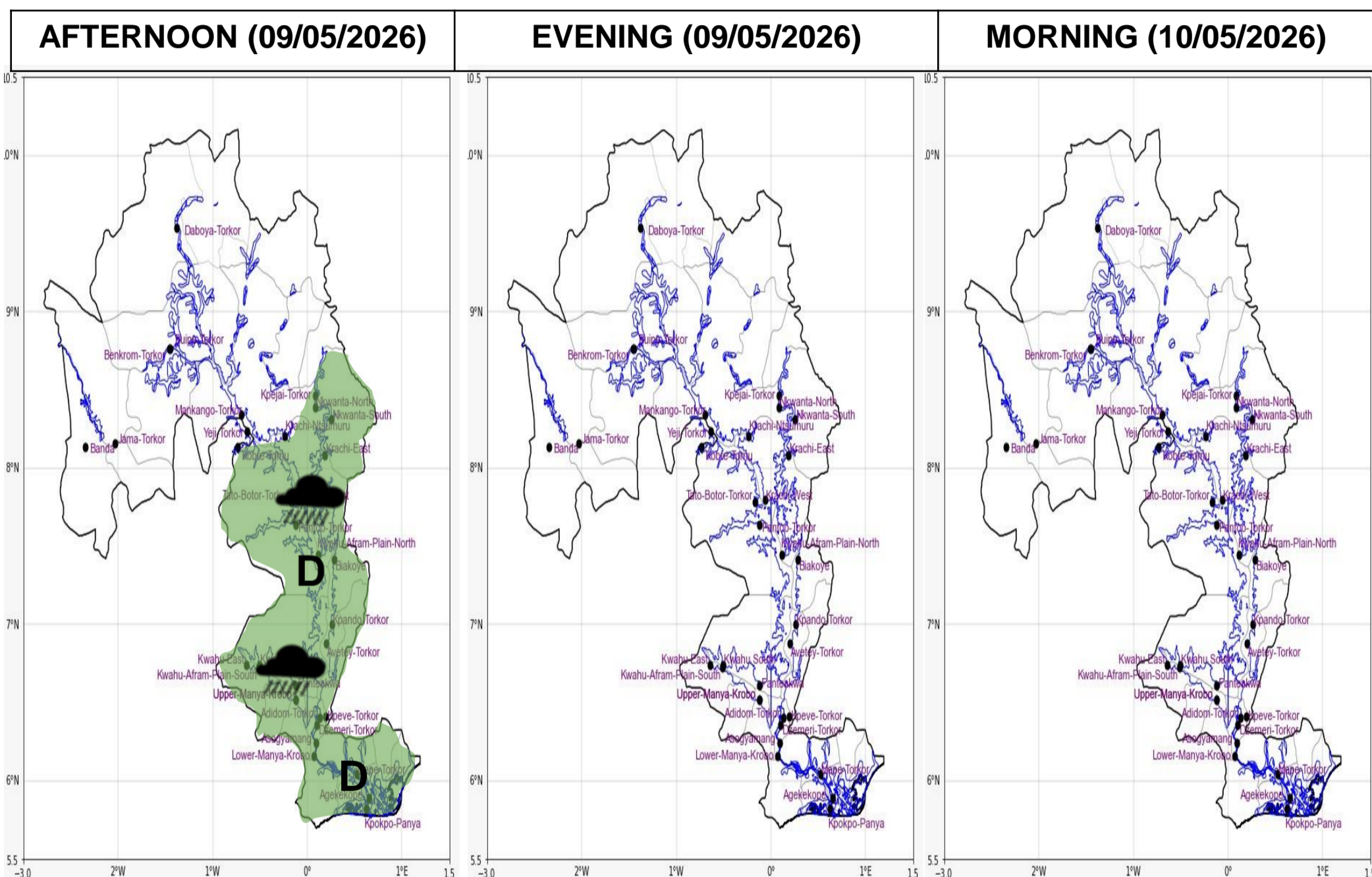




INLAND WATER IMPACT-BASED FORECAST

WEATHER SUMMARY

Variable cloud weather conditions with occasional sunshine are expected throughout the forecast period. However, there is a 40% chance of isolated light to moderate rain over the middle and southern portions of the lake and its environs with possible thunderstorms, from this afternoon into the evening.



Date
09/05/2026
Time Issued
10:00 AM
Valid From
12:00 PM
Nowcasting Risk
Take Action
Be aware
Low risk
No risk

Weather Forecast Risk Table				
Likelihood ↑	High (>60%)	G	H	I
	Medium (40%-60%)	D	E	F
	Low (<40%)	A	B	C
		Low	Medium	High
		Impact →		

Time	Surface Wind	Visibility	Temperature
12 hours	S/SW 08 Max 20 kt	(5 – 10) km	(25 – 32) °C
24 hours	S/SW 05 Max 18 kt	(5 – 10) km	(24 – 31) °C