

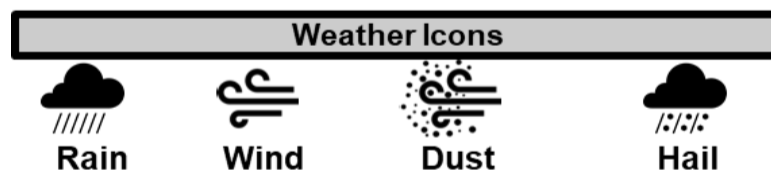
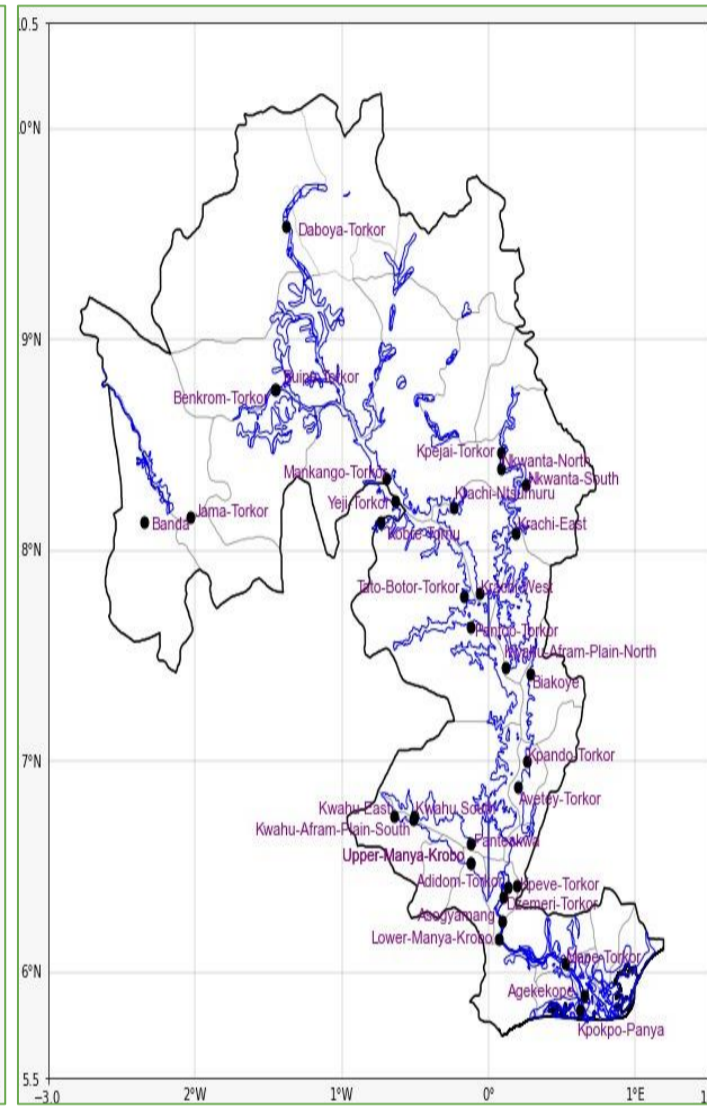
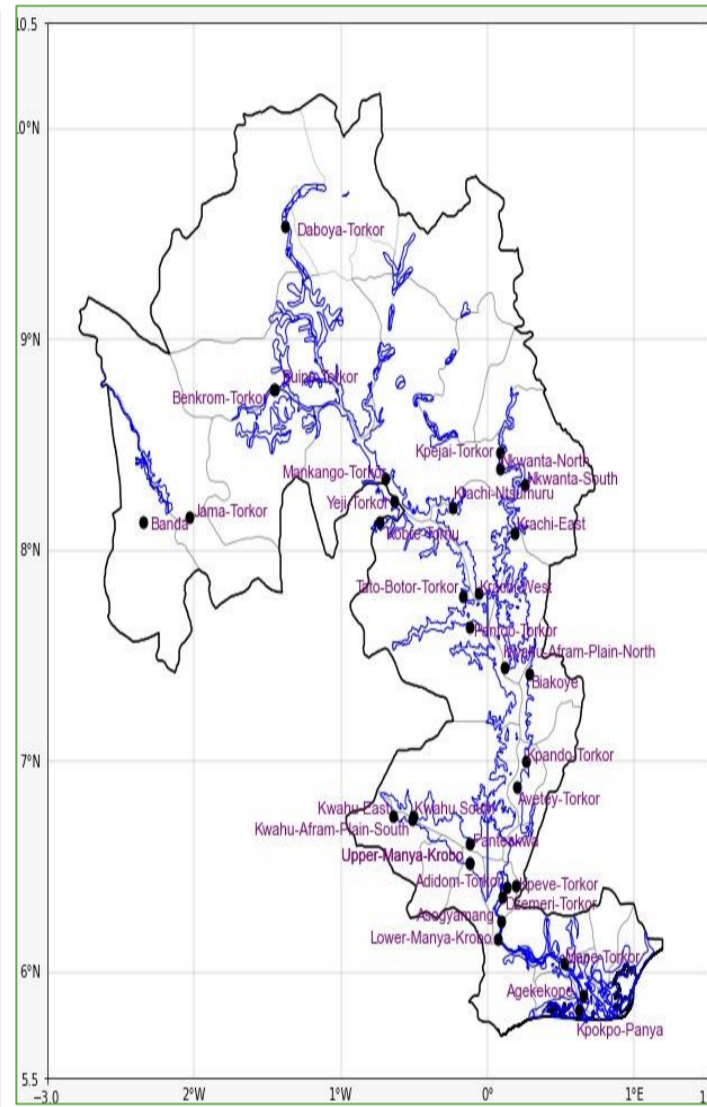
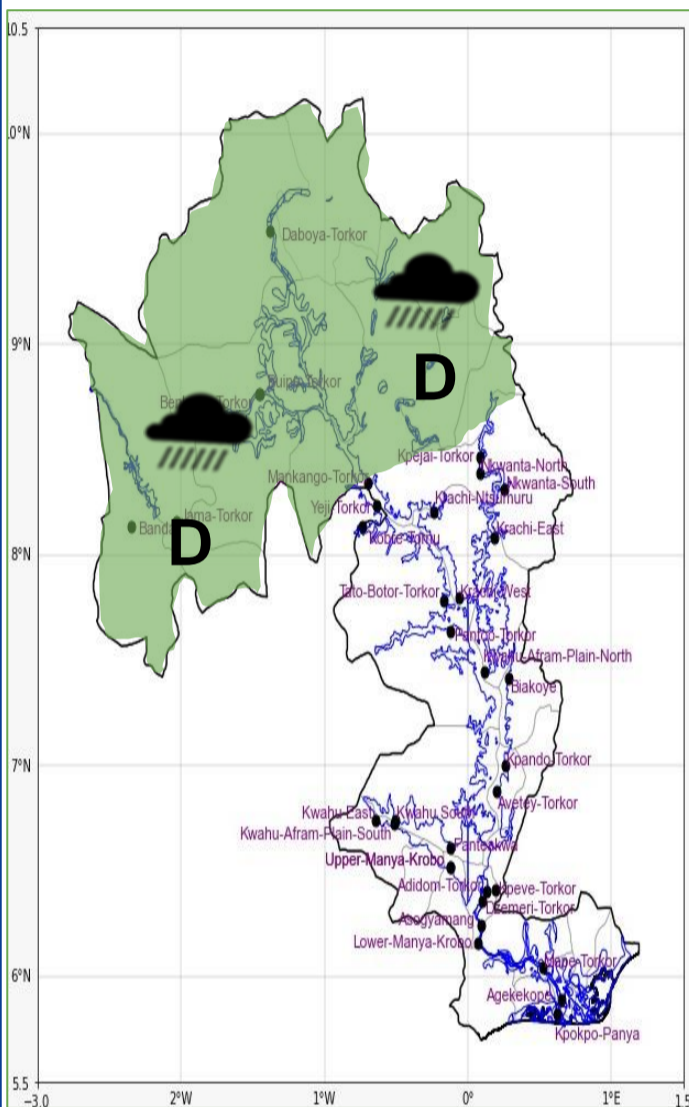


## INLAND WATER IMPACT-BASED FORECAST

### WEATHER SUMMARY

The lake and its surrounding areas are expected to experience variable cloudiness during the forecast period. However, there is a 40% chance of isolated light to moderate rain with possible thunderstorms over the northern portions of the lake and its environs this evening.

EVENING (13/05/2026)	MORNING (14/05/2026)	AFTERNOON (14/05/2026)
----------------------	----------------------	------------------------



Date
13/05/2026
Time Issued
4:00 PM
Valid From
06:00 PM
Nowcasting Risk
<b>Take Action</b>
<b>Be aware</b>
<b>Low risk</b>
<b>No risk</b>

Likelihood ↑	Weather Forecast Risk Table			
	High (>60%)	G	H	I
	Medium (40%-60%)	D	E	F
Low (<40%)	A	B	C	
	Low	Medium	High	
	Impact →			

Time	Surface Wind	Visibility	Temperature
12 hours	S/SE 05 Max 20 kt	(4 – 10) km	(24 – 36) °C
24 hours	S/SW 05 Max 18 kt	(4 – 10) km	(24 – 35) °C