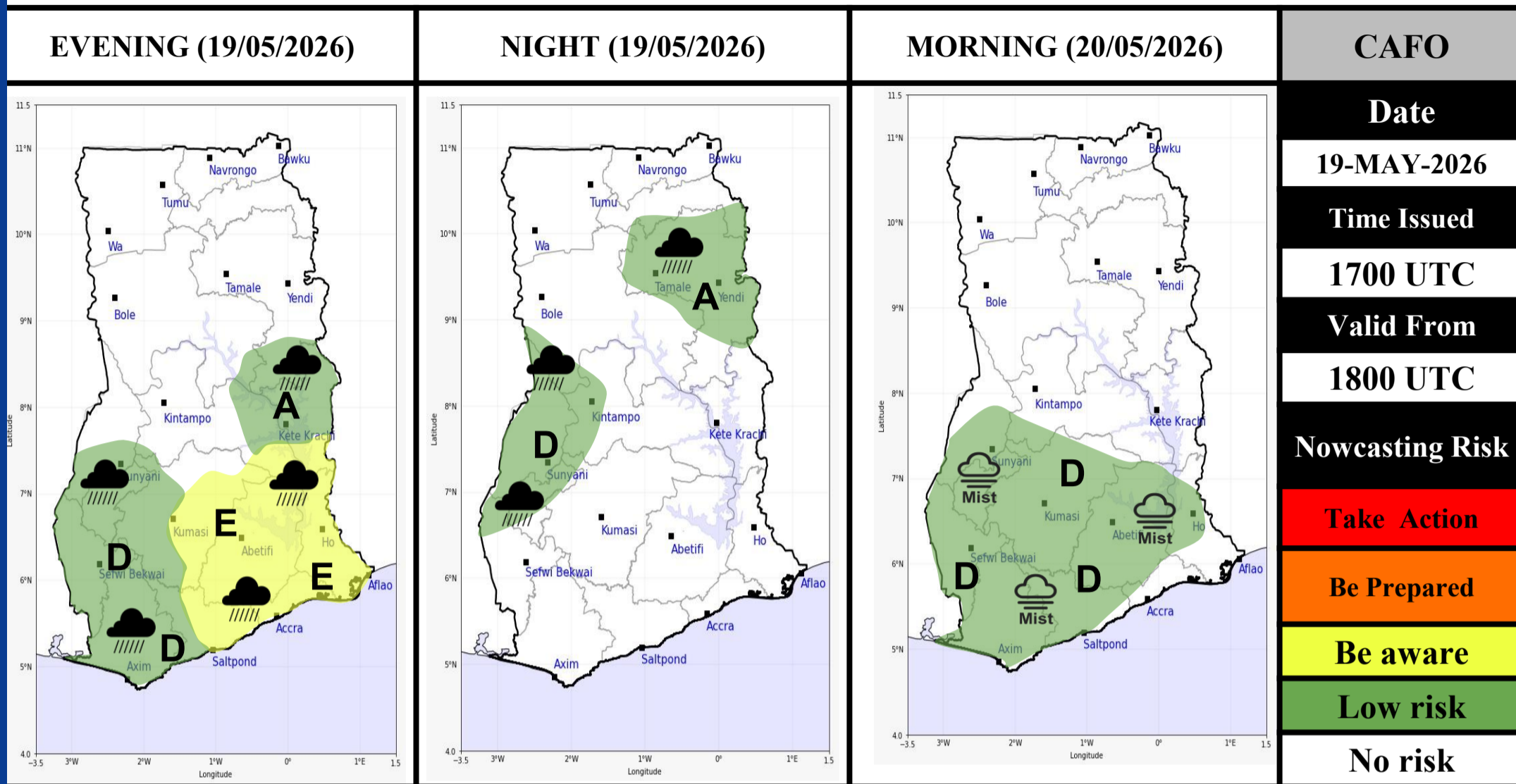


## 24-HOUR IMPACT-BASED FORECAST FOR GHANA



Weather Forecast Risk Matrix

Likelihood ↑	High (> 60%)	<b>G</b>	<b>H</b>	<b>I</b>
	Medium (40% – 60%)	<b>D</b>	<b>E</b>	<b>F</b>
	Low (< 40%)	<b>A</b>	<b>B</b>	<b>C</b>
		Low	Medium	High
		Impact →		

**Weather Icons**

- Rain
- Wind
- Dust
- Fog
- Hail
- Mist

Sector	Minimum Temperature (°C)	Maximum Temperature (°C)
<b>Coast</b>	<b>24</b>	<b>29</b>
<b>Forest</b>	<b>23</b>	<b>29</b>
<b>Transition</b>	<b>23</b>	<b>30</b>
<b>Northern</b>	<b>25</b>	<b>33</b>

**SUMMARY:** The band of low clouds mentioned earlier in the *weather update* have intensified into active rainstorms which are currently inducing cloudiness and producing thunderstorms or rain of varying intensities over most parts of southern Ghana. This condition expected to persist from this evening into the night. Northern Ghana is also anticipated to experience isolated thunderstorms or rain from this evening into the night. Early morning mist or fog patches will form over the coastal, forested and hilly areas.

**SIGNED: Central Analysis and Forecasting Office (CAFO)**