

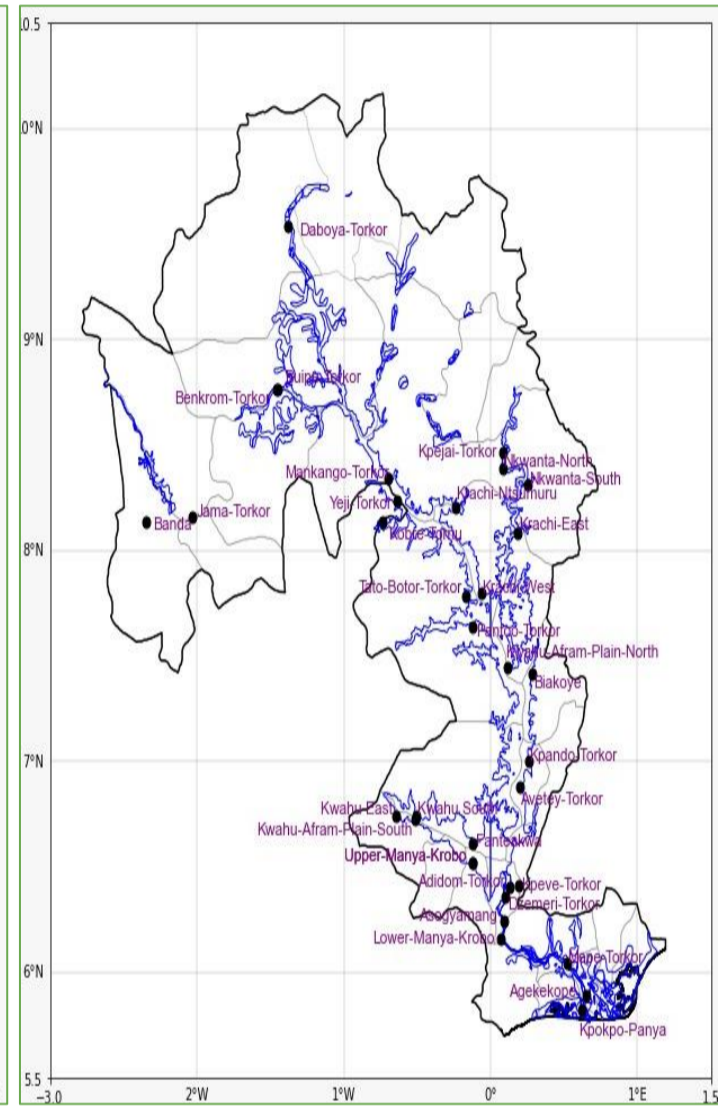
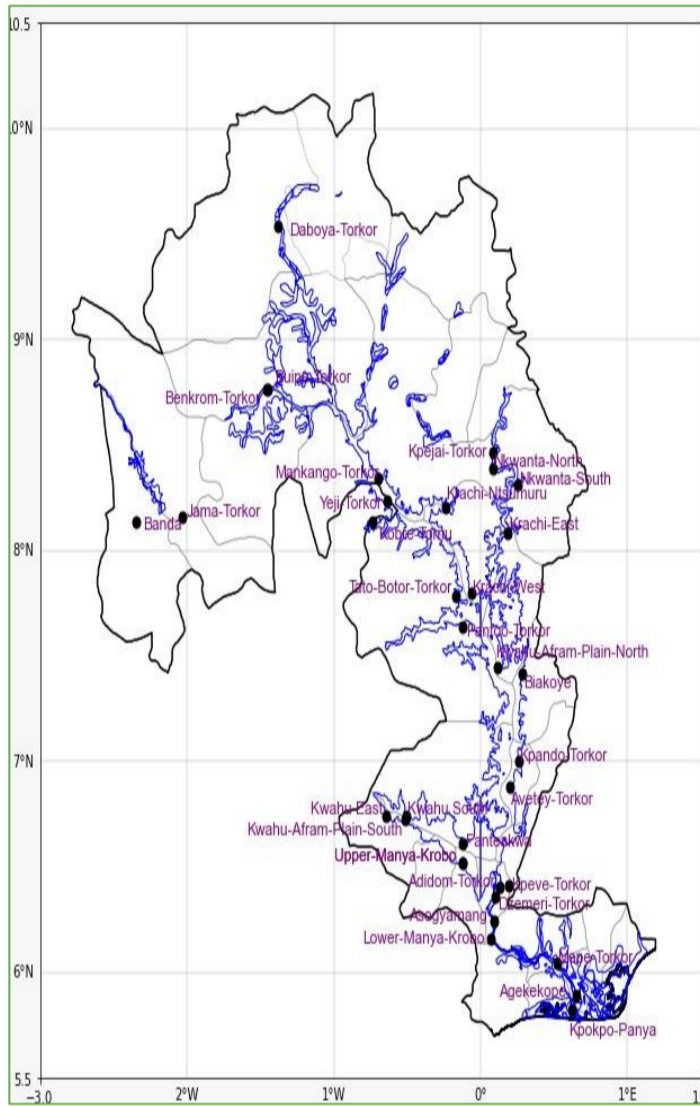
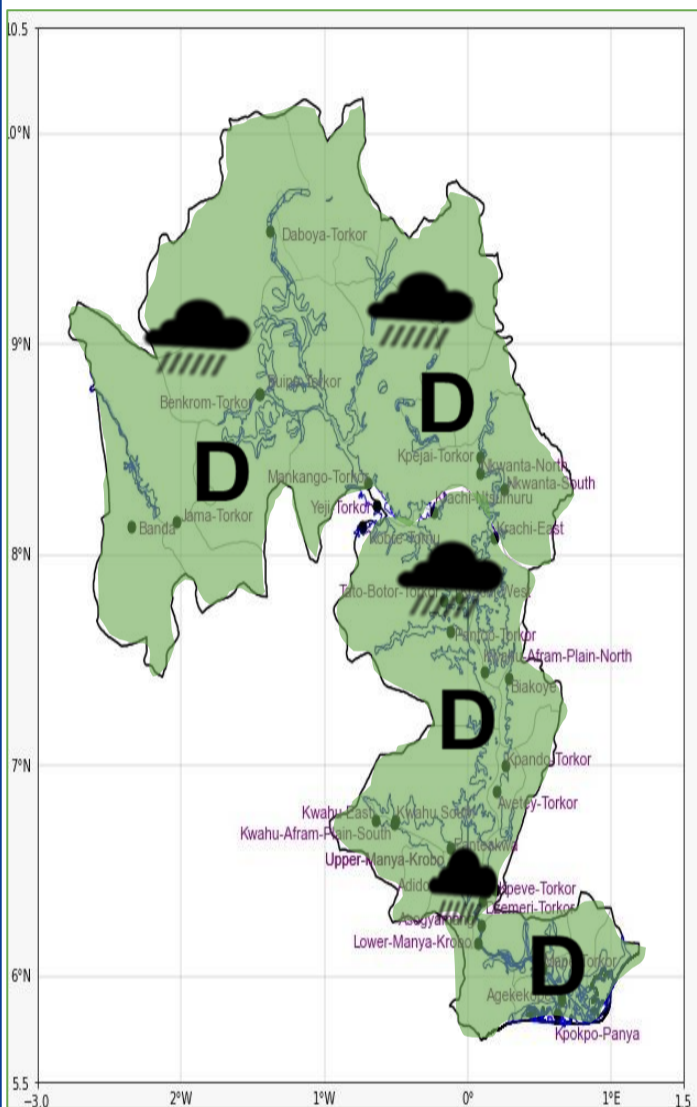


INLAND WATER IMPACT-BASED FORECAST

WEATHER SUMMARY

Cloudy weather conditions are expected to dominate over the lake and its environs during the forecast period. However, there is a 40% chance of isolated, slight-to-moderate rain across the lake and its environs this evening.

EVENING (21/05/2026)	MORNING (22/05/2026)	AFTERNOON (22/05/2026)
----------------------	----------------------	------------------------



Weather Icons

Rain

Wind

Dust

Hail

Date
21/05/2026
Time Issued
4:00 PM
Valid From
06:00 PM
Nowcasting Risk
Take Action
Be aware
Low risk
No risk

Likelihood ↑	Weather Forecast Risk Table			
	High (>60%)	G	H	I
	Medium (40%-60%)	D	E	F
Low (<40%)	A	B	C	
	Low	Medium	High	
	<div style="display: flex; justify-content: space-between; width: 100%;"> ← → </div> Impact			

Time	Surface Wind	Visibility	Temperature
12 hours	S/SW 05 Max 20 kt	(3 – 10) km	(23 – 31) °C
24 hours	SE/SW 05 Max 20 kt	(3 – 10) km	(22 – 31) °C