

GHANA METEOROLOGICAL AGENCY



SUMMARY

- In this dekad, **Yendi** recorded the highest rainfall accumulation of 105.9mm across the entire country whereas **Manga Bawku** recorded 3.4mm as the lowest rainfall accumulation. Most parts of the country recorded rainfall deficits during the dekad, except for **Yendi, Bui, Dunkwa, Sunyani, Enchi, Takoradi, Abetifi, Ada** and their surrounding areas, which recorded rainfall surpluses relative to their dekad climatology (1991–2020).
- **Navrongo** and its environs recorded 38.7°C, the highest average maximum temperature for the dekad, whereas **Abetifi** and its environs recorded 31.3°C, the lowest average maximum temperature across the entire country.

The entire **country** recorded warmer average day-time temperatures except **Akatsi** and its surroundings.

- **Abetifi** and its environs recorded 21.1°C as the lowest average minimum temperature whereas **Ada** and its environs recorded 27.6°C as the highest average minimum temperature across the country.

In this dekad the entire **country** recorded warmer night-time temperatures except for **Abetifi** and its environs which recorded cooler night-time temperatures.

In the next dekad,

- Below normal rainfall is expected in the **Southern sector**, the **Transition zone** and the **western portions** of the **Northern sector**.
- The **Southern sector**, **Transition zone** and the **eastern portions** of the **Northern sector** are expected to record above normal temperatures.

TABLE OF CONTENTS

1.0 CLIMATIC ASSESSMENT (MAY 1ST DEKAD 2026)	3
1.1 RAINFALL AMOUNT	3
1.2 MAXIMUM TEMPERATURE	4
1.3 MINIMUM TEMPERATURE	5
2.0 RAINFALL AND TEMPERATURE OUTLOOK FOR MAY 2ND DEKAD 2026	6
2.1 RAINFALL OUTLOOK	6
2.2 TEMPERATURE OUTLOOK	7
3.0 REVIEW OF CROP GROWTH AND FIELD ACTIVITIES:	8
3.1 AGRO-ADVISORIES FOR MAY 2ND DEKAD 2026	8
4.0 APPENDIX	10
TABLE OF STATIONS	11

1.0 CLIMATIC ASSESSMENT (MAY 1ST DEKAD 2026)

1.1 RAINFALL AMOUNT

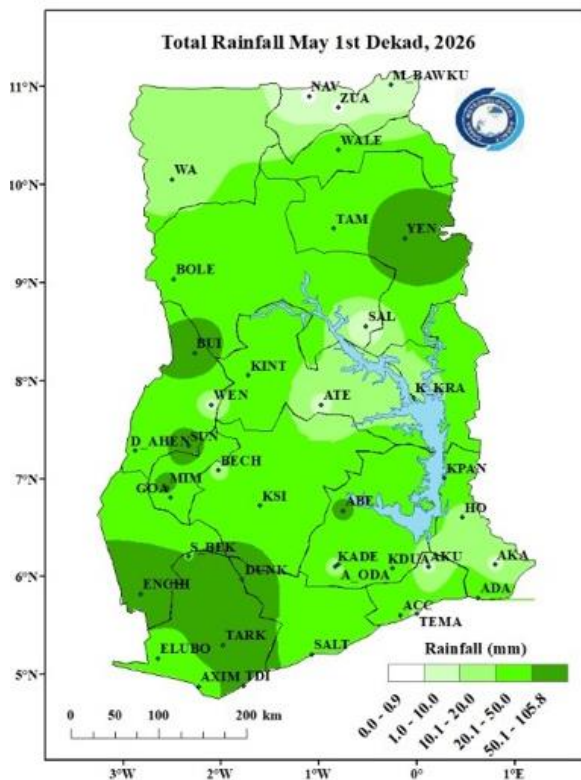
In this dekad, Yendi recorded the highest rainfall accumulation of 105.9mm across the entire country whereas Manga Bawku recorded 3.4mm as the lowest rainfall accumulation.

Kintampo recorded 20.6mm, the highest within the Transition zone. Along the Coast, Tarkoradi and its environs recorded the highest amount of rainfall of 65.5mm.

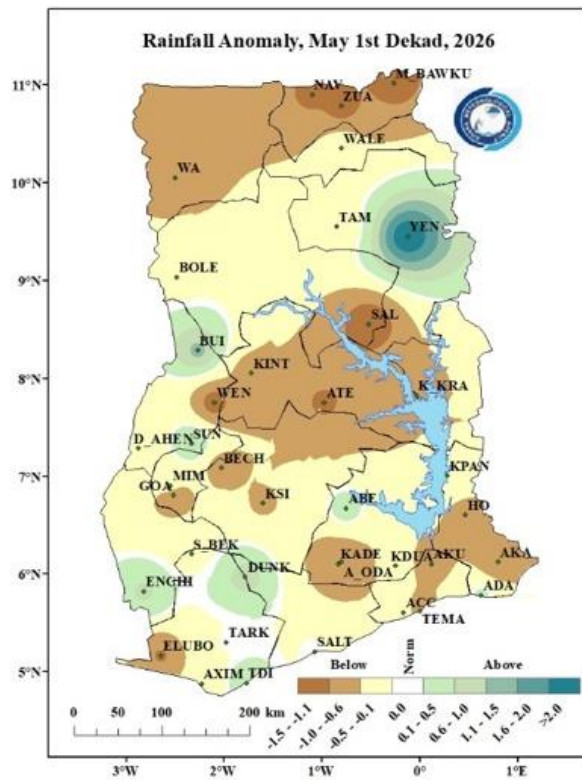
Navrongo, Zuarungu and their environs in the Northern sector recorded no rainfall amount.

Most parts of the country recorded rainfall deficits during the dekad, except for Yendi, Bui, Dunkwa, Sunyani, Enchi, Takoradi, Abetifi, Ada and their surrounding areas, which recorded rainfall surpluses relative to their dekadal climatology (1991–2020).

Tarkwa and its environs recorded normal conditions.



Map 1: Total Rainfall Map.



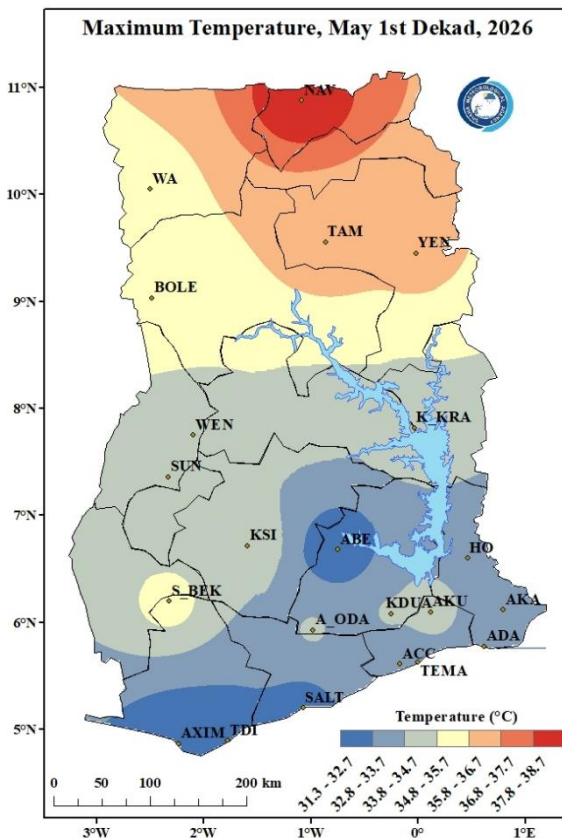
Map 2: Rainfall Anomaly Map.

1.2 MAXIMUM TEMPERATURE

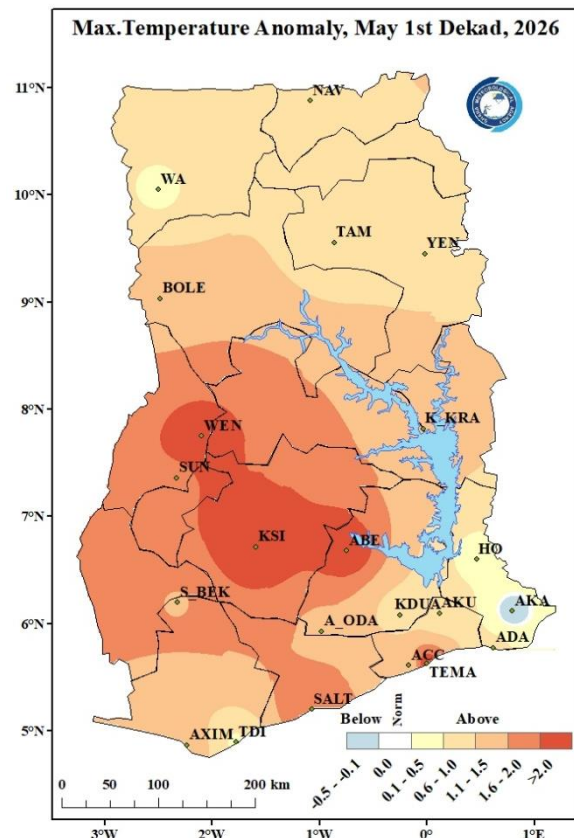
Navrongo and its environs recorded 38.7°C, the highest average maximum temperature for the dekad, whereas Abetifi and its environs recorded 31.3°C, the lowest average maximum temperature across the entire country.

In the Transition zone, Kete-Krachi recorded 34.6°C as the highest average maximum temperature. Sefwi Bekwai, Akuse and Kumasi within the Forest zone recorded 35.2°C, 34.7°C and 34.5°C, respectively. Along the Coast, Accra, Ada and Saltpond, recorded 33.1°C, 32.7°C and 32.3°C, respectively.

The entire country recorded warmer average day-time temperatures except for Akatsi and its environs which recorded cooler average day-time temperatures as compared to their dekad climatological means (1991-2020).



Map 3: Maximum Temperature Map.

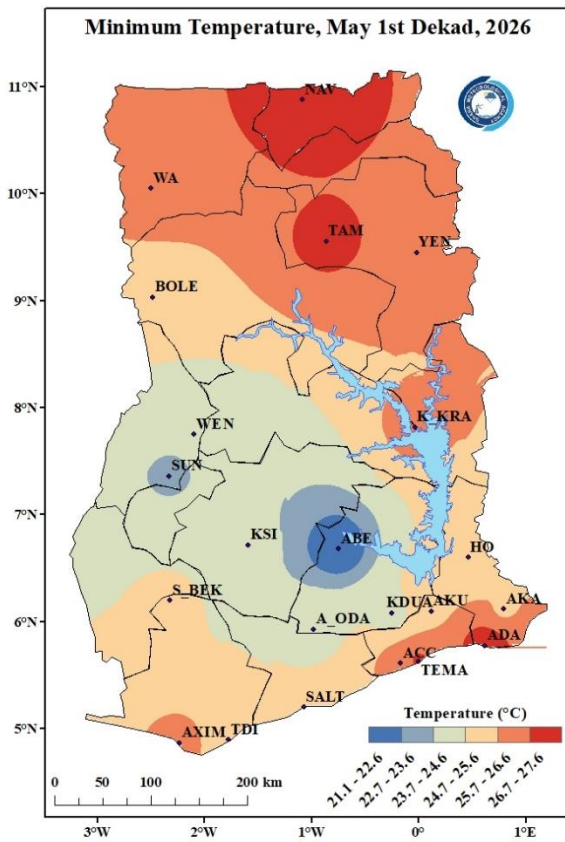


Map 4: Maximum Temperature Anomaly Map.

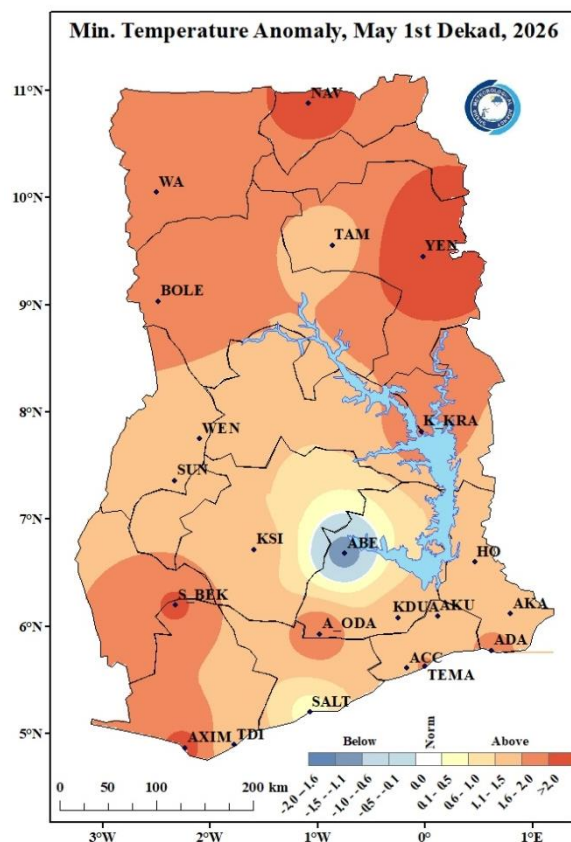
1.3 MINIMUM TEMPERATURE

The country recorded average minimum temperatures between 21.0°C to 28.0°C. Abetifi and its environs recorded 21.1°C as the lowest average minimum temperature whereas Ada and its environs recorded 27.6°C as the highest average minimum temperature across the country. Kete-Krachi recorded 26.1°C, the highest within the Transition zone. Along the Coast, Saltpond, Axim and Tema (with their environs) recorded 24.6°C, 26.0°C, and 26.8°C respectively.

The entire country recorded warmer night-time temperatures except for Abetifi and its environs which recorded cooler night-time temperatures as compared to their dekadal climatological means (1991-2020).



Map 5: Minimum Temperature Map.



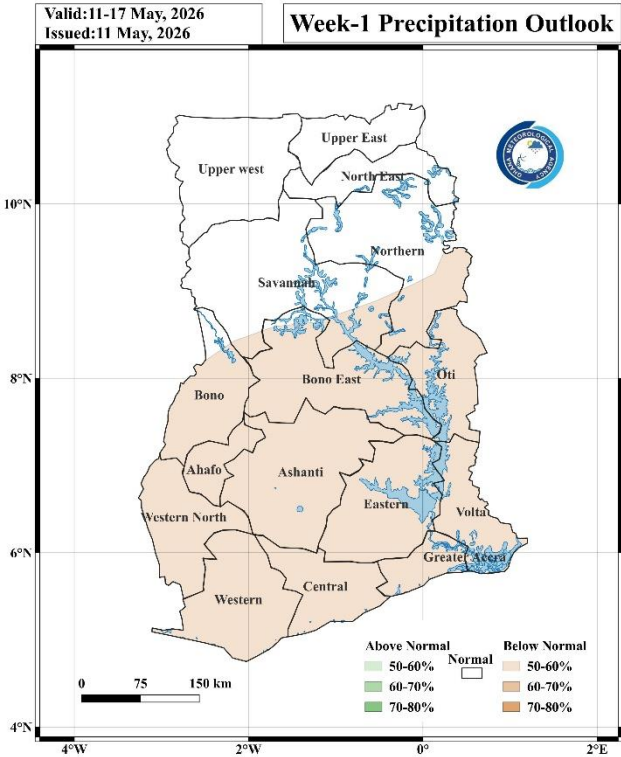
Map 6: Minimum Temperature Anomaly Map.

2.0 RAINFALL AND TEMPERATURE OUTLOOK FOR MAY 2ND DEKAD 2026

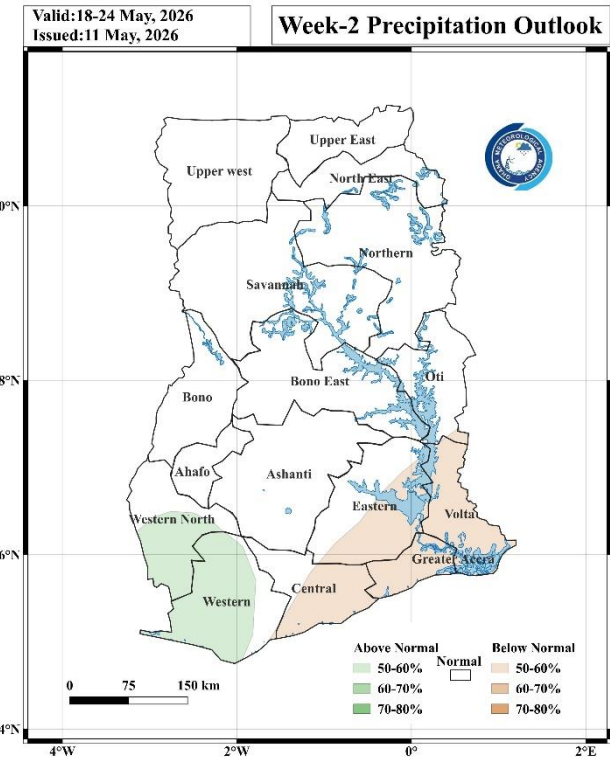
2.1 RAINFALL OUTLOOK

Week 1: Below normal rainfall is expected in the Southern sector, the Transition zone and the western portions of the Northern sector.

Week 2: Above normal rainfall is expected in the western parts of the Southern sector whereas below normal rainfall is expected in the East Coast and the eastern portions of the Forest zone.



Map 7: Rainfall Outlook for Week 1.

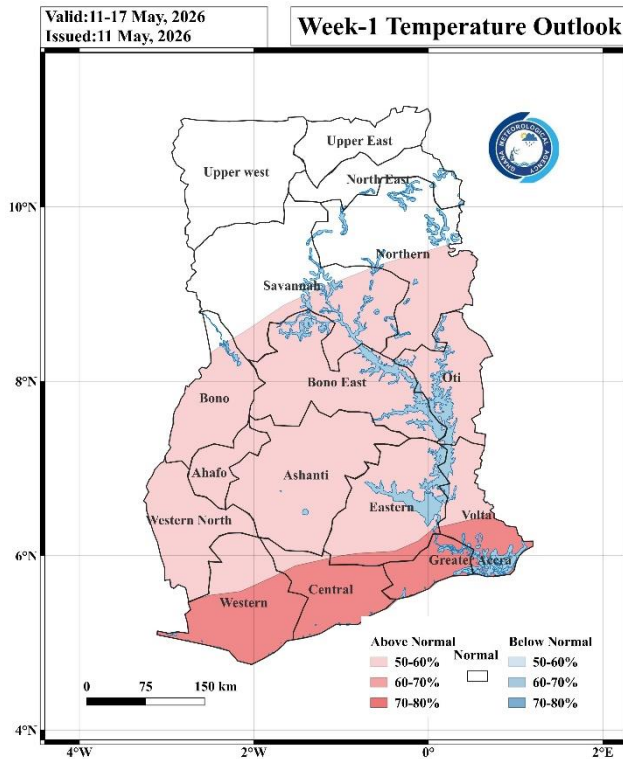


Map 8: Rainfall Outlook for Week 2.

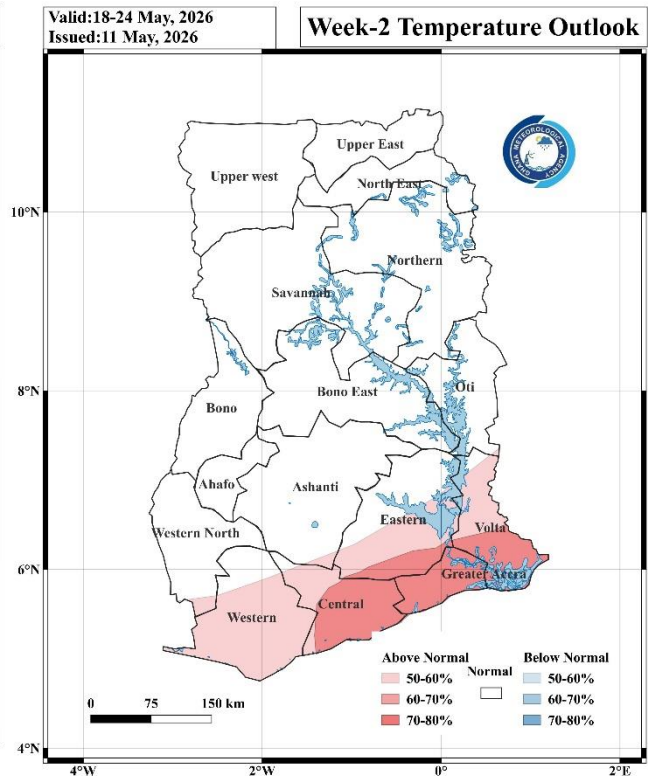
2.2 TEMPERATURE OUTLOOK

Week 1: The Southern sector, Transition zone and the eastern portions of the Northern sector are expected to record above normal temperatures.

Week 2: Generally, the country is expected to experience normal temperatures with the exception of areas along the Coast and its inland areas which are likely to experience above normal temperatures.





Map 9: Temperature Outlook for Week 1.






Map 10: Temperature Outlook for Week 2.

3.0 REVIEW OF CROP GROWTH AND FIELD ACTIVITIES:



Dekadal	Crops	Development Stage	Main cultivation operation	Comments
NORTHERN ZONE				
May 1 - 10, Dekad 1	Tomato	Nursery establishment	Seed sowing in nursery	Tomato seeds were sown in seedbeds for new farmers
	Sorghum	Sowing/Planting	Land preparation completed, sowing began	Fields were final prepared, seeds were sown
	Soyabean	Land preparation	Final field preparation	Fields were prepared for planting
	Maize	Sowing/Planting	Direct seeding, fertilizer application	Maize was planted with basal fertilizer
	Rice	Transplanting	Seedling transplanting from nursery	4-5 weeks old seedlings were transplanted
FOREST & TRANSITION ZONE				
May 1 - 10, Dekad 1	Maize	Vegetative/Flowering 	Plant care, pest monitoring	Plants were monitored, pests were controlled
	Rice		Flowering management, water control	Rice began flowering, water levels were managed
	Tomato	Nursery establishment	Seed sowing in nursery	Tomato seeds were sown in seedbeds for new farmers
EAST COAST & WEST COAST				
May 1 - 10, Dekad 1	Tomato	Nursery establishment	Seed sowing in nursery	Tomato seeds were sown in seedbeds for new farmers
	(45 – 55 days)	Vegetative/Flowering 	Side dressing, plant maintenance	Second fertilizer application was done
	Maize		Water management, pest monitoring	Rice flowering was managed
	Rice			

3.1 AGRO-ADVISORIES FOR MAY 2ND DEKAD 2026



	Weather conditions are favourable for crops
	Weather conditions are not very favourable for crops
	Weather conditions are unfavourable for crops

Dominant stages of development	Land Preparation	Germination / Emergence	Vegetation	Maturity (Flowering and fruiting)	Aging



A. For the Northern sector

Crops	Dominant stages of development	Weather	Risks	Cultivation operations planned	Recommendations
Maize			Low risk of poor germination and establishment	Direct seeding with basal fertilizer should have been completed	Use certified seeds, ensure proper planting depth
Rice			Minimal transplant shock risk	4-5 weeks old seedlings should be transplanted from nursery	Maintain shallow water depth, avoid deep transplanting
Sorghum			Potential planting delays, soil compaction issues	Final land preparation should be completed, sowing begins	Monitor soil moisture, avoid planting in waterlogged conditions
Soyabean			Low preparation and soil structure risks	Final field preparation should be completed	Ensure good drainage, prepare for timely planting
Tomatoes			Low seed germination and nursery establishment risks	Ensure that tomato seeds are sown in seedbeds	Provide adequate shade, maintain consistent moisture

B. For the Forest and Transition regions

Crops	Dominant stages of development	Weather	Risks	Cultivation operations planned	Recommendations
Maize			Low stress during rapid growth phase	Plant care and pest monitoring should be conducted	Continue scheduled fertilizer applications, scout for fall armyworms
Rice			Minimal flowering disruption risk	Flowering management and water control should be maintained	Maintain optimal water levels, monitor for blast disease
Tomatoes			Low nursery stress and disease pressure	Tomato seeds should be sown in seedbeds	Maintain nursery hygiene, provide proper ventilation

C. For the East and West Coast regions

Crops	Dominant stages of development	Weather	Risks	Cultivation operations planned	Recommendations
Maize			Low nutritional stress risk	Side dressing and plant maintenance should be completed	Continue nutrient program, monitor for lodging
Rice			Favorable flowering conditions	Water management and pest control should be maintained	Ensure consistent water supply, monitor for insect damage
Tomatoes			Low stress for nursery activities	Tomato seeds should be sown in seedbeds	Quality nursery management for future transplanting

4.0 APPENDIX

TABLE OF STATIONS

STATION	ABBREVIATION	STATION	ABBREVIATION	STATION	ABBREVIATION
ABETIFI	ABE	DUNKWA	DUNK	OFOASE	OFO
ACCRA	ACC	ELUBO	ELUBO	OTI	OTI
ADA	ADA	EJURA	EJURA	PRANG	PRANG
AKATSI	AKA	ENCHI	ENCHI	PRESTEA	PRES
AKIM ODA	A_ODA	GARU	GARU	PONG TAMALE	P_TAM
AKUSE	AKU	GOASO	GOA	SALAGA	SALA
ASAMANKESE	ASAM	HALF ASSINI	H_ASS	SALTPOND	SALT
ASSIN FOSU	A_FOSU	HO	HO	SEFWI BEKWAI	S_BEK
ATEBUBU	ATE	HWIDIEM	HWI	SUNYANI	SUN
AWUDOME	AWU	HUNI VALLEY	H_VAL	TAKORADI	TDI
AXIM	AXIM	KADE	KADE	TAMALE	TAM
BABILE	BAB	KADJEBI	KAJ	TARKWA	TARK
BECHEM	BECH	KETE KRACHI	K_KRA	TEMA	TEMA
BIMBILA	BIM	KINTAMPO	KINT	TECHIMAN	TECH
BOLE	BOLE	KOFORIDUA	KDUA	VEA	VEA
BOLGATANGA	BOLGA	KONONGO	KON	WA	WA
BONGO	BON	KPANDO	KPAN	WALEWALE	WALE
BUI	BUI	KUMASI	KSI	WENCHI	WEN
CAPE COAST	C_COAST	MANKRANSO	MANK	WINNEBA	WIN
DAMONGO	DAM	MIM	MIM	YENDI	YEN
DOMPOASE	DOM	NAVRONGO	NAV	ZUARUNGU	ZUA
DORMAA AHENKRO	D_AHEN	OBUASI	OBU		

For further inquiries, clarification, information or assistance, Contact:

The Director General – Ghana Meteorological Agency

Tel. +233 (0)30 701 0019 or clients@meteo.gov.gh/info@meteo.gov.gh