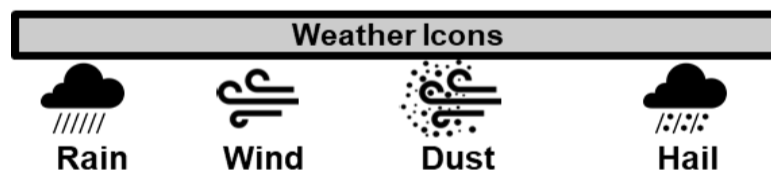
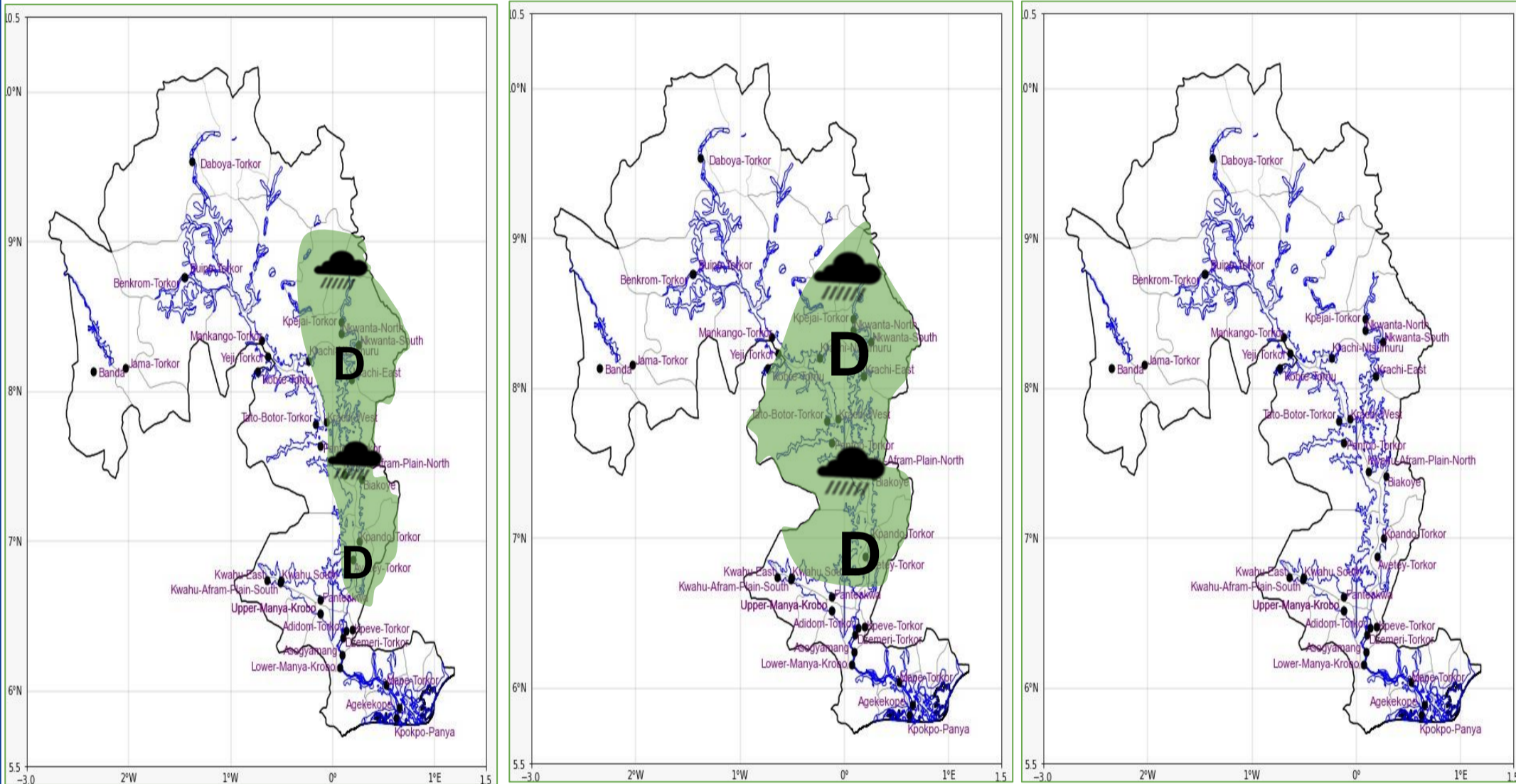




INLAND WATER IMPACT-BASED FORECAST

Throughout the forecast period, variably cloudy weather is expected to prevail over the lake and its surrounding areas. However, between evening and morning, there is a 40% chance of isolated light to moderate rainfall and thunderstorms, particularly in parts of the northern and middle sectors.



| |
|------------------------|
| Date |
| 05/06/2026 |
| Time Issued |
| 4:00 PM |
| Valid From |
| 06:00 PM |
| Nowcasting Risk |
| Take Action |
| Be aware |
| Low risk |
| No risk |

| Weather Forecast Risk Table | | | | |
|-----------------------------|------------------|----------|--------|------|
| Likelihood ↑ | High (>60%) | G | H | I |
| | Medium (40%-60%) | D | E | F |
| | Low (<40%) | A | B | C |
| | | Low | Medium | High |
| | | Impact → | | |

| Time | Surface Wind | Visibility | Temperature |
|----------|----------------------|-------------|--------------|
| 12 hours | S/SW 05 Max 20 kt | (5 – 10) km | (23 – 32) °C |
| 24 hours | S/SW 05 Max 19 kt | (5 – 10) km | (22 – 32) °C |