

GHANA METEOROLOGICAL AGENCY



SUMMARY

- In this dekad, **Axim** recorded the highest rainfall accumulation of 252.9mm across the entire country whereas **Bui** recorded 25mm as the lowest rainfall accumulation.

Most areas in the country recorded rainfall surpluses during the dekad, except for **places** in the **western portions** of the **country** together with **Manga Bawku, Bimbila, Kpando, Akatsi, Koforidua**, and their environs which recorded rainfall deficits as compared to their dekadal climatology (1991–2020).

- **Navrongo** and its environs recorded 34.7°C, the highest average maximum temperature for the dekad whereas **Abetifi** and its environs recorded 28.0°C, the lowest average maximum temperature across the entire country.

Warmer average day-time temperatures were recorded across the entire coastal areas together with areas such as **Tamale, Yendi, Bole, Wenchi, Sunyani** and **Kumasi** as compared to their dekadal climatological means (1991-2020). **Sefwi Bekwai, Abetifi, Akuse, Kete-Krachi, Ho, Wa, Navrongo, Akatsi** and their surrounding areas recorded cooler average day-time temperatures.

- **Abetifi** and its environs recorded 20.5°C as the lowest average minimum temperature whereas **Wa** and its environs recorded 25.6°C as the highest average minimum temperature across the entire country.

The **country** recorded warmer night-time temperatures except for **Abetifi, Kumasi, Ho, Takoradi, Saltpond** and **Accra** which recorded cooler average night-time temperatures as compared to their dekadal climatological means (1991-2020).

In the next dekad,

- Generally, the **country** is expected to record above normal rainfall with the exception of **few places** in the **Greater Accra** and **Volta regions** likely to record below normal rainfall.
- The **country** is expected to record above normal temperatures.

TABLE OF CONTENTS

1.0 CLIMATIC ASSESSMENT (MAY 3RD DEKAD 2026)	3
1.1 RAINFALL AMOUNT	3
1.2 MAXIMUM TEMPERATURE	4
1.3 MINIMUM TEMPERATURE	5
2.0 RAINFALL AND TEMPERATURE OUTLOOK FOR JUNE 1ST DEKAD 2026	6
2.1 RAINFALL OUTLOOK	6
2.2 TEMPERATURE OUTLOOK	7
3.0 REVIEW OF CROP GROWTH AND FIELD ACTIVITIES:	8
3.1 AGRO-ADVISORIES FOR JUNE 1ST DEKAD 2026	8
4.0 APPENDIX	10
TABLE OF STATIONS	11

1.0 CLIMATIC ASSESSMENT (MAY 3RD DEKAD 2026)

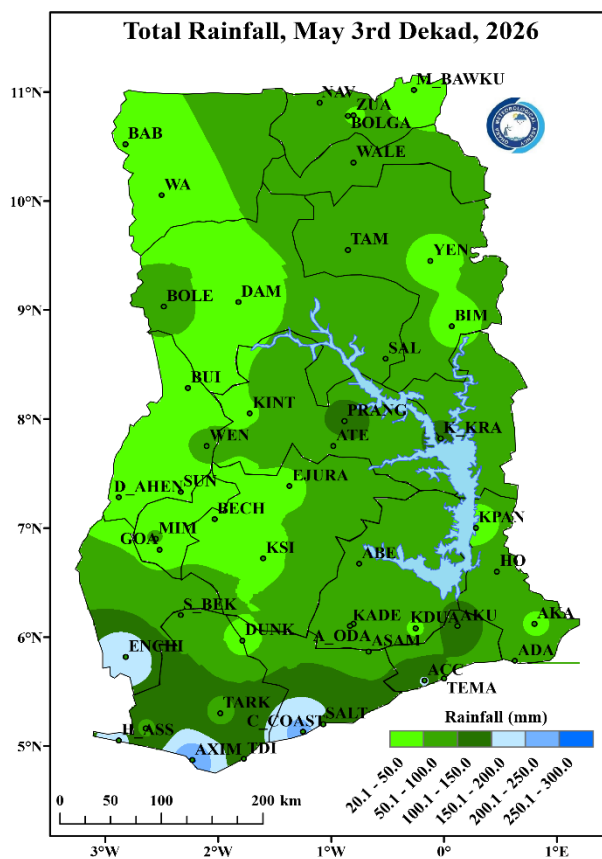
1.1 RAINFALL AMOUNT

In this dekad, Axim recorded the highest rainfall accumulation of 252.9mm across the entire country whereas Bui recorded 25mm as the lowest rainfall accumulation.

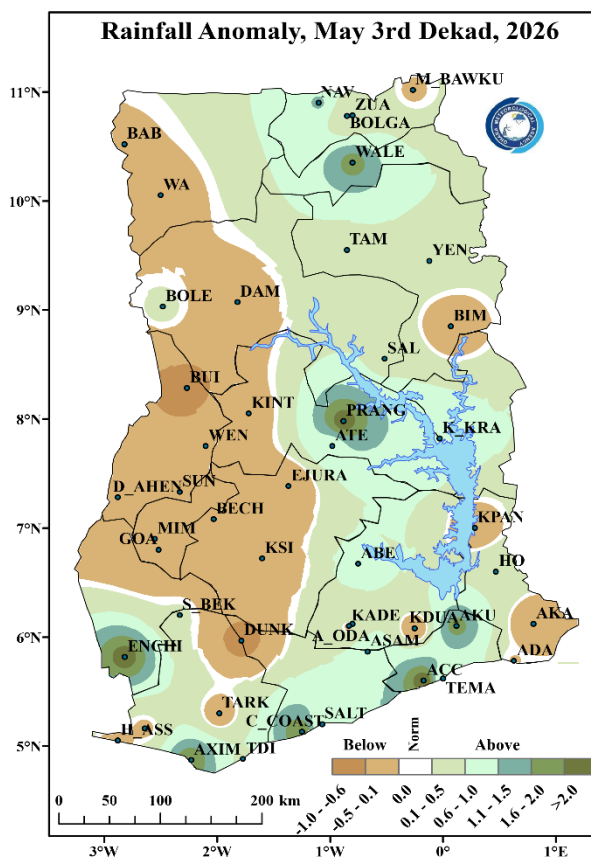
Prang recorded 119mm, the highest within the Transition zone. Along the Coast, Cape Coast, Half Assini, Accra and Saltpond recorded 234.9mm, 162mm, 155.1mm, 143.2mm respectively.

In the Northern sector, Navrongo and its environs recorded the highest amount of rainfall of 84.2mm.

Most areas in the country recorded rainfall surpluses during the dekad, except for places such as Babile, Wa, Damongo, Bui, Kintampo, Wenchi, Sunyani, Dormaa Ahenkro, Bechem, Mim, Goaso, Kumasi, Dunkwa, Tarkwa, Elubo and Half Assini in the western portions of the country together with Manga Bawku, Bimbila, Kpando, Akatsi, Koforidua, which recorded rainfall deficits relative to their dekad climatological (1991–2020).



Map 1: Total Rainfall Map.



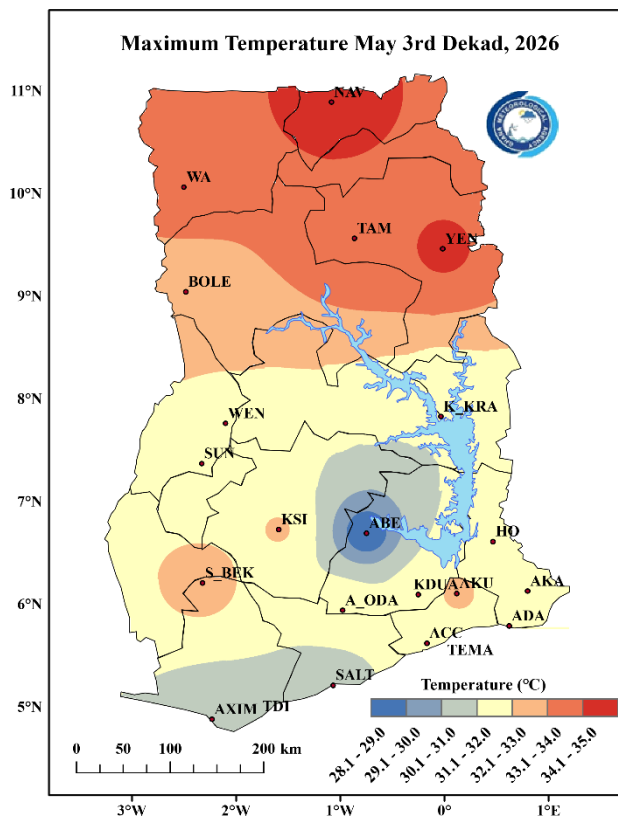
Map 2: Rainfall Anomaly Map.

1.2 MAXIMUM TEMPERATURE

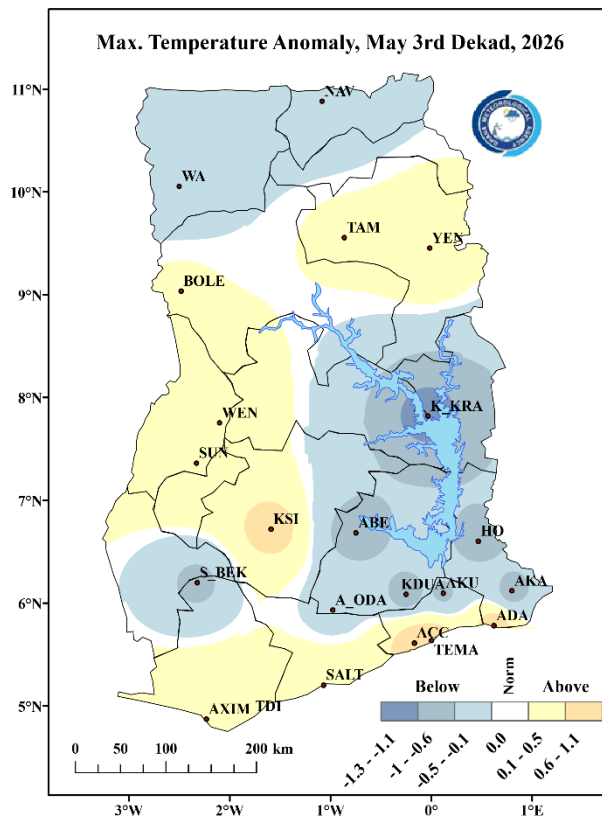
Navrongo and its environs recorded 34.7°C, the highest average maximum temperature for the dekad whereas Abetifi and its environs recorded 28.0°C, the lowest average maximum temperature across the entire country.

Wenchi recorded 31.7°C as the highest in the Transition zone. Akuse, Ho and Sefwi Bekwai within the Forest zone recorded 32.4°C, 31.5°C, and 32.6°C respectively. Along the Coast, Accra, Tema and Saltpond recorded 31.8°C, 31.3°C, and 30.1°C respectively.

Warmer average day-time temperatures were recorded across the entire coastal areas except for Akatsi and its environs which recorded cooler day-time temperatures as compared to its dekadal climatological mean (1991-2020). Other areas which recorded cooler temperatures include Sefwi Bekwai, Abetifi, Akuse, Kete-Krachi, Ho, Wa, Navrongo and their surrounding areas. Tamale, Yendi, Bole, Wenchi, Sunyani and Kumasi recorded warmer average day-time temperatures.



Map 3: Maximum Temperature Map.

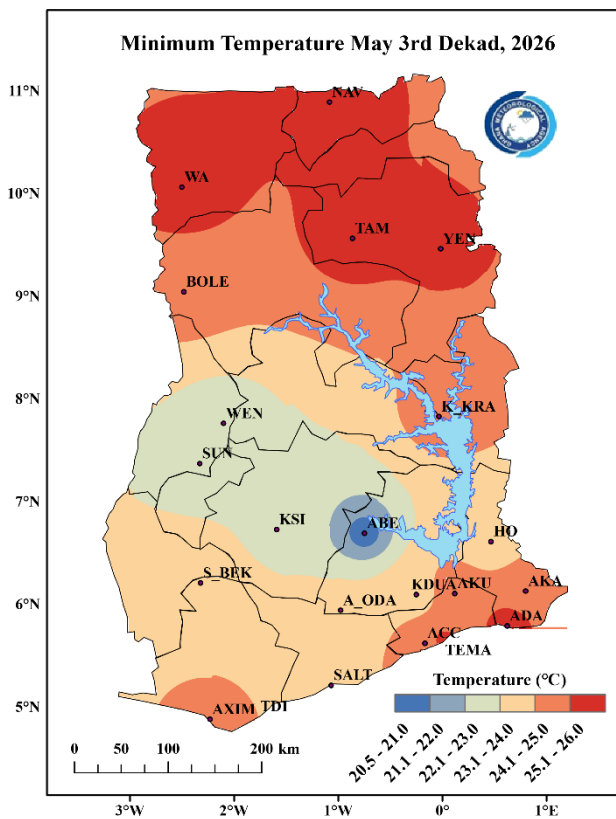


Map 4: Maximum Temperature Anomaly Map.

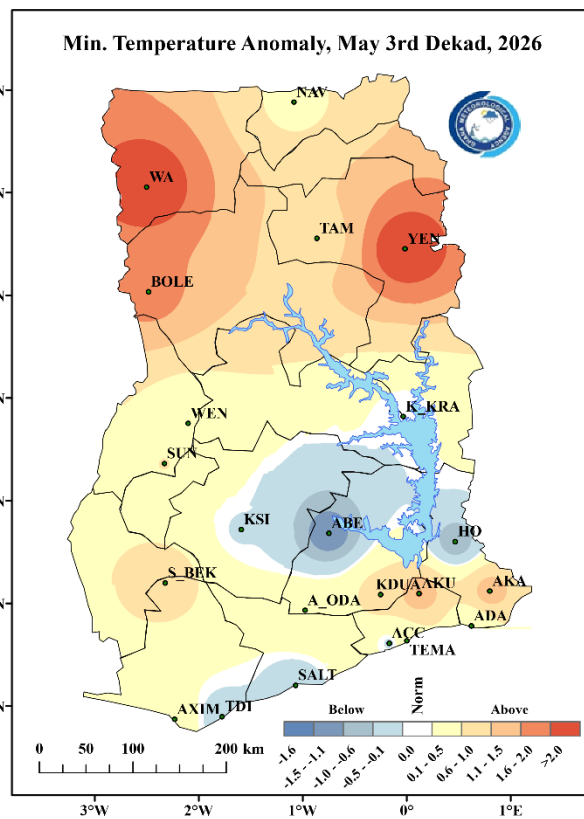
1.3 MINIMUM TEMPERATURE

The country recorded average minimum temperatures between 20.0°C to 26.0°C. Abetifi and its environs recorded 20.5°C as the lowest average minimum temperature whereas Wa and its environs recorded 25.6°C as the highest average minimum temperature across the entire country. Kete-Krachi recorded 24.5°C, the highest within the Transition zone. Along the Coast, Tema, Accra, and Axim (with their environs) recorded 25.3°C 24.2°C, and 24.4°C respectively.

Generally, the country recorded warmer night-time temperatures except for Abetifi, Kumasi, Ho, Takoradi, Saltpond and Accra which recorded cooler average night-time temperatures as compared to their dekadal climatological means (1991-2020). Kete-Krachi recorded normal temperature conditions.



Map 5: Minimum Temperature Map.



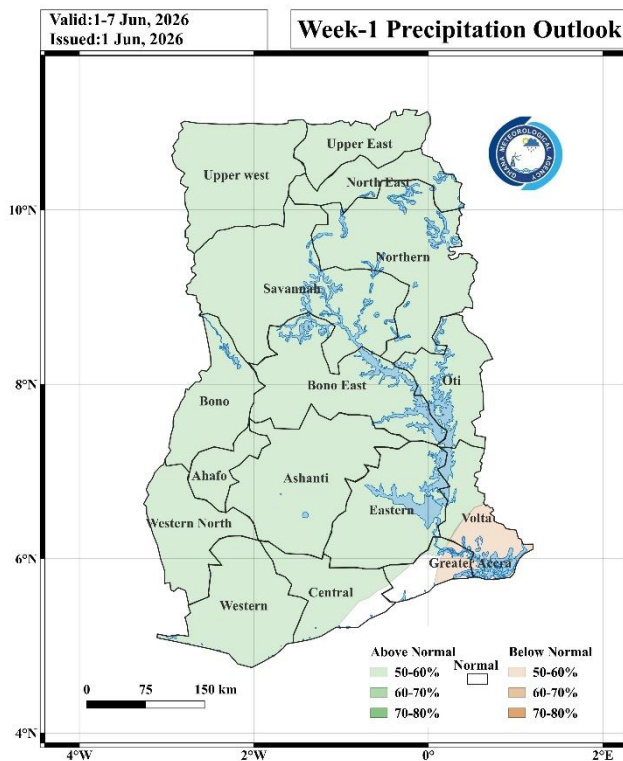
Map 6: Minimum Temperature Anomaly Map.

2.0 RAINFALL AND TEMPERATURE OUTLOOK FOR JUNE 1ST DEKAD 2026

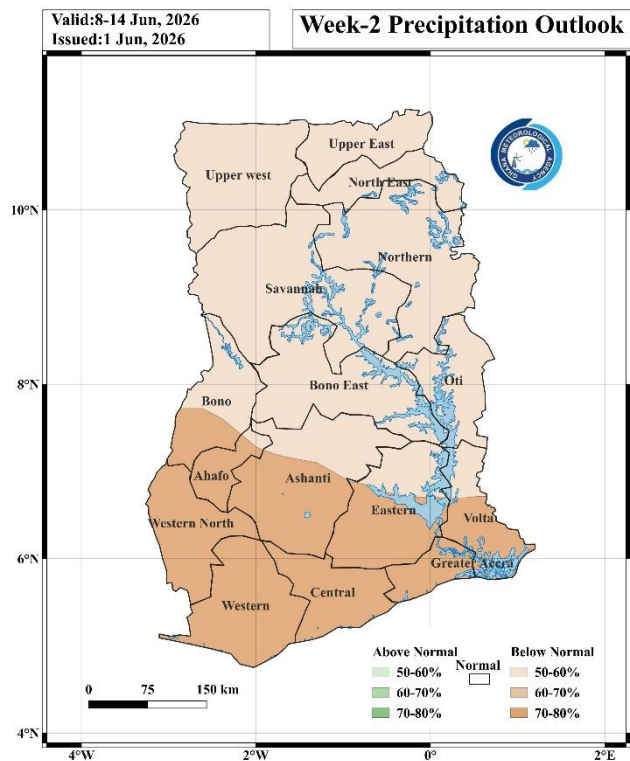
2.1 RAINFALL OUTLOOK

Week 1: Generally, the country is expected to record above normal rainfall with the exception of few places in the Greater Accra and Volta regions likely to record below normal rainfall.

Week 2: The entire country is expected to record below normal rainfall.



Map 7: Rainfall Outlook for Week 1.

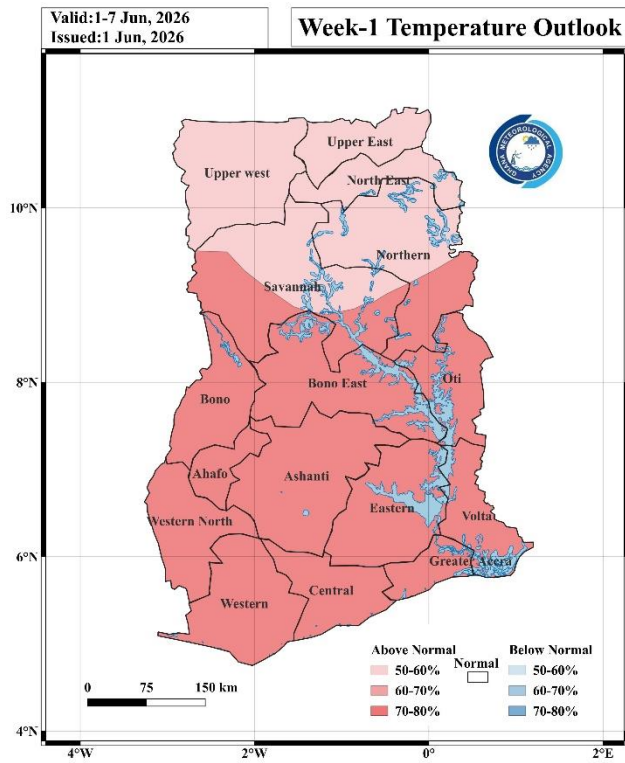


Map 8: Rainfall Outlook for Week 2.

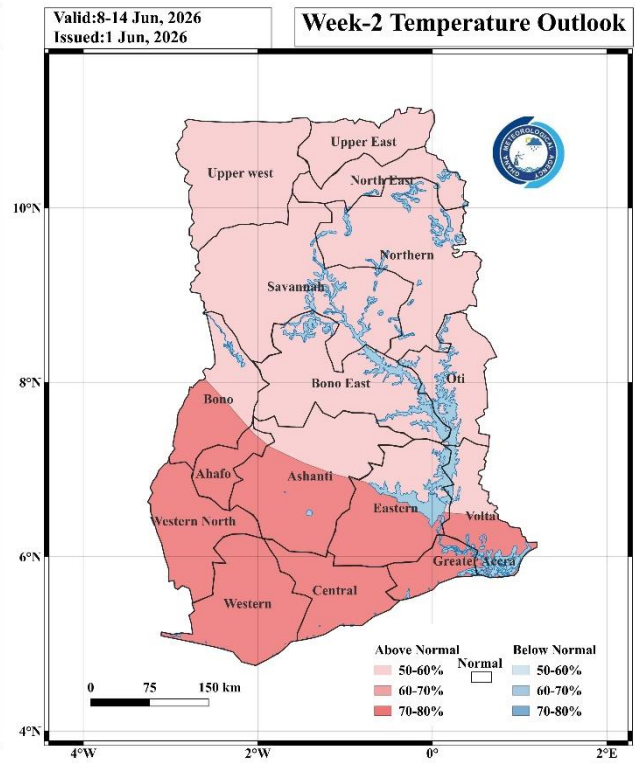
2.2 TEMPERATURE OUTLOOK

Week 1: The country is expected to record above normal temperatures.

Week 2: The entire country is expected to record above normal temperatures.




Map 9: Temperature Outlook for Week 1.






Map 10: Temperature Outlook for Week 2.

3.0 REVIEW OF CROP GROWTH AND FIELD ACTIVITIES:



Dekadal	Crops	Development Stage	Main cultivation operation	Comments
NORTHERN ZONE				
May 21 - 31, Dekad 3	Tomato	Nursery/Land preparation	Seedling hardening, field preparation	Seedlings were hardened, fields were prepared for transplanting
	Soyabean	Emergence/Vegetative/ Tillering	First weeding, pest monitoring	Seedlings were cleared, pests were monitored
	Sorghum		Second weeding, fertilizer application	Plants were cleared, NPK fertilizer was applied
	Maize		Second weeding, side dressing	Second weeding was completed
	Rice		First weeding, fertilizer application	Rice was weeded and fertilized
FOREST & TRANSITION ZONE				
May 21 - 31, Dekad 3	Maize	Vegetative/ Grain filling	Plant monitoring, pest control	Plants were monitored for pests and diseases
	Rice		Water management, pest monitoring	Grain filling continued, water levels were maintained
	Tomato	Nursery /Land preparation	Seedling hardening, field preparation	Seedlings were hardened, fields were prepared for transplanting
EAST COAST & WEST COAST				
May 21 - 31, Dekad 3	Tomato	Nursery /Land preparation	Seedling hardening, field preparation	Seedlings were hardened, fields were prepared for transplanting
	Maize	Silking/Grain filling	Pollination monitoring, plant care	Pollination was monitored, plants were cared for
	Rice		Water control, nutrient monitoring	Grain filling progressed, nutrients were monitored

3.1 AGRO-ADVISORIES FOR JUNE 1ST DEKAD 2026



	Weather conditions are favourable for crops
	Weather conditions are not very favourable for crops
	Weather conditions are unfavourable for crops

Dominant stages of development	Land Preparation	Germination / Emergence	Vegetation	Maturity (Flowering and fruiting)	Aging



A. For the Northern sector

Crops	Dominant stages of development	Weather	Risks	Cultivation operations planned	Recommendations
Maize			Low germination and establishment risks	Sowing, weeding and fertilizing	Continue scheduled fertilizer applications, monitor for fall armyworm
Rice			Minimal transplant shock and establishment issues	Transplanting and first weeding	Maintain water levels, apply nitrogen for tillering
Sorghum			Potential slow growth and pest pressure	Emergence, weeding and fertilization	Monitor growth rate, consider supplemental watering if needed
Soyabean			Low establishment and nodulation risks	Planting with inoculation and first weeding	Monitor nodulation success, control weeds regularly
Tomatoes			Low seedling mortality and field prep issues	Nursery establishment, seedling hardening, field preparation	Prepare for June transplanting, ensure quality seedlings

B. For the Forest and Transition regions

Crops	Dominant stages of development	Weather	Risks	Cultivation operations planned	Recommendations
Maize			Low stress during critical growth phases	Multiple weeding, fertilizer applications and monitoring	Continue pest monitoring, prepare for August harvest
Rice			Minimal flowering disruption and grain filling issues	Water management, fertilizer applications	Monitor grain development, maintain water levels
Soyabeans			Low establishment stress	Weeding and mounding activities	Monitor nodulation, continue weed control
Tomatoes			Low nursery stress and disease pressure	Seedling care and hardening activities	Prepare quality seedlings for transplanting

C. For the East and West Coast regions

Crops	Dominant stages of development	Weather	Risks	Cultivation operations planned	Recommendations
Maize			Low reproductive stress	Side dressing, monitoring and pollination support	Monitor grain filling, prepare for July harvest
Rice			Favorable grain development conditions	Water control and fertilizer applications	Continue grain filling support, monitor maturity
Tomatoes			Low stress for nursery and field activities	Nursery management and field preparation	Quality seedlings ready for transplanting

4.0 APPENDIX

TABLE OF STATIONS

STATION	ABBREVIATION	STATION	ABBREVIATION	STATION	ABBREVIATION
ABETIFI	ABE	DUNKWA	DUNK	OFOASE	OFO
ACCRA	ACC	ELUBO	ELUBO	OTI	OTI
ADA	ADA	EJURA	EJURA	PRANG	PRANG
AKATSI	AKA	ENCHI	ENCHI	PRESTEA	PRES
AKIM ODA	A_ODA	GARU	GARU	PONG TAMALE	P_TAM
AKUSE	AKU	GOASO	GOA	SALAGA	SALA
ASAMANKESE	ASAM	HALF ASSINI	H_ASS	SALTPOND	SALT
ASSIN FOSU	A_FOSU	HO	HO	SEFWI BEKWAI	S_BEK
ATEBUBU	ATE	HWIDIEM	HWI	SUNYANI	SUN
AWUDOME	AWU	HUNI VALLEY	H_VAL	TAKORADI	TDI
AXIM	AXIM	KADE	KADE	TAMALE	TAM
BABILE	BAB	KADJEBI	KAJ	TARKWA	TARK
BECHEM	BECH	KETE KRACHI	K_KRA	TEMA	TEMA
BIMBILA	BIM	KINTAMPO	KINT	TECHIMAN	TECH
BOLE	BOLE	KOFORIDUA	KDUA	VEA	VEA
BOLGATANGA	BOLGA	KONONGO	KON	WA	WA
BONGO	BON	KPANDO	KPAN	WALEWALE	WALE
BUI	BUI	KUMASI	KSI	WENCHI	WEN
CAPE COAST	C_COAST	MANKRANSO	MANK	WINNEBA	WIN
DAMONGO	DAM	MIM	MIM	YENDI	YEN
DOMPOASE	DOM	NAVRONGO	NAV	ZUARUNGU	ZUA
DORMAA AHENKRO	D_AHEN	OBUASI	OBU		

For further inquiries, clarification, information or assistance, Contact:

The Director General – Ghana Meteorological Agency

Tel. +233 (0)30 701 0019 or clients@meteo.gov.gh/info@meteo.gov.gh