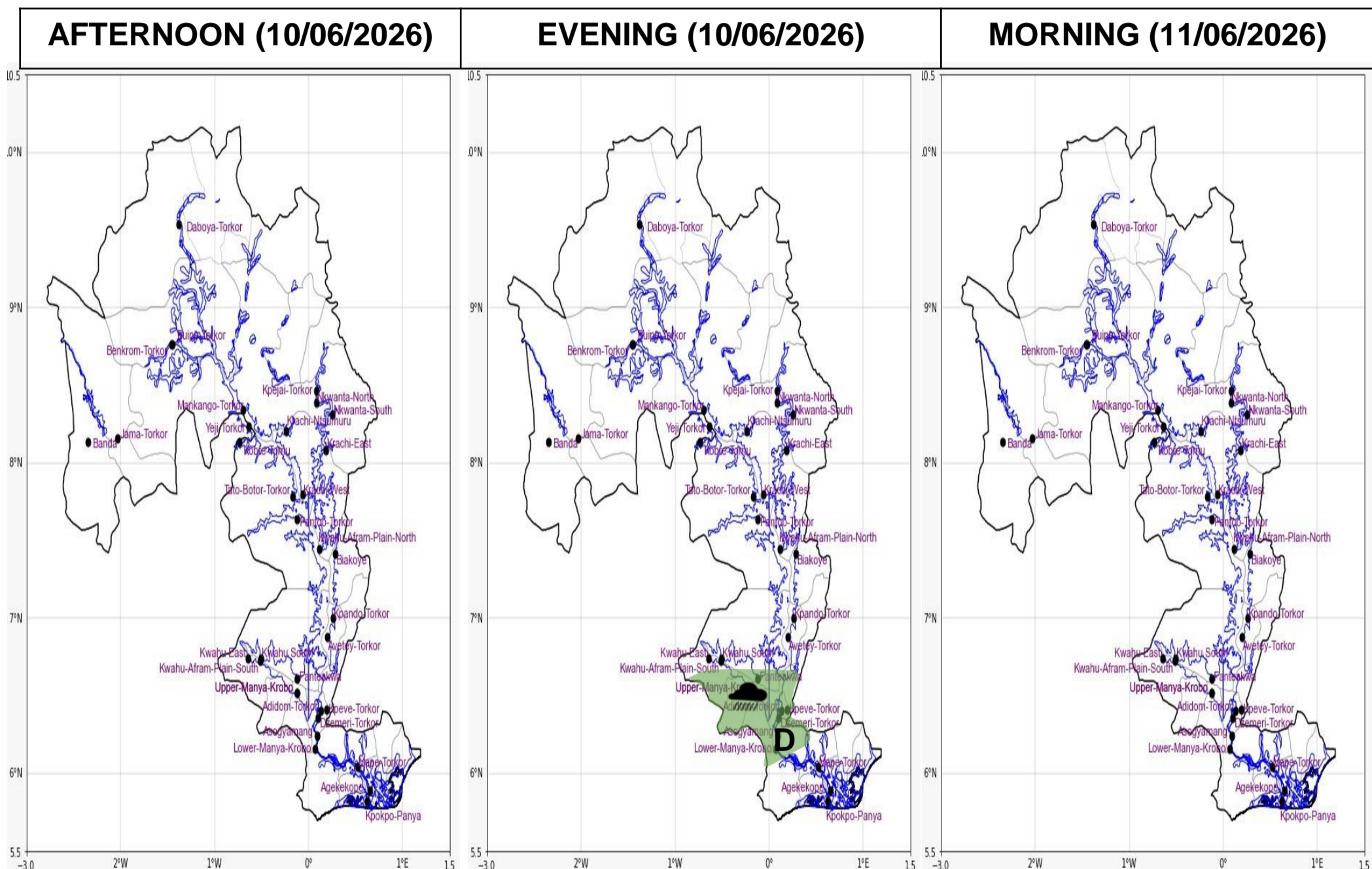




INLAND WATER IMPACT-BASED FORECAST

WEATHER SUMMARY

The lake and the surrounding area are anticipated to experience changing cloud cover throughout the forecast period. There is a 40% likelihood of scattered light to moderate rain and thunderstorms affecting certain parts of the southern sector from late afternoon into the evening.



Date
10/06/2026
Time Issued
10:00 AM
Valid From
12:00 PM
Nowcasting Risk
Take Action
Be aware
Low risk
No risk

Likelihood ↑	Weather Forecast Risk Table			
	High (>60%)	G	H	I
	Medium (40%-60%)	D	E	F
Low (<40%)	A	B	C	
	Low	Medium	High	
	Impact →			

Time	Surface Wind	Visibility	Temperature
12 hours	S/SW 05 Max 18 kt	(3 – 10) km	(23 – 34) °C
24 hours	S/SW 05 Max 18kt	(4 – 10) km	(24 – 32) °C