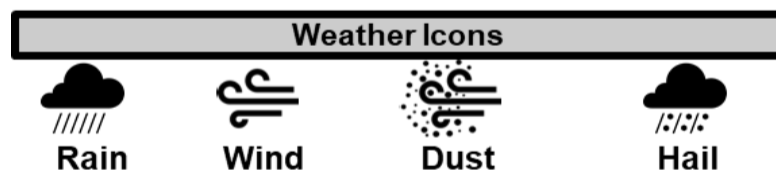
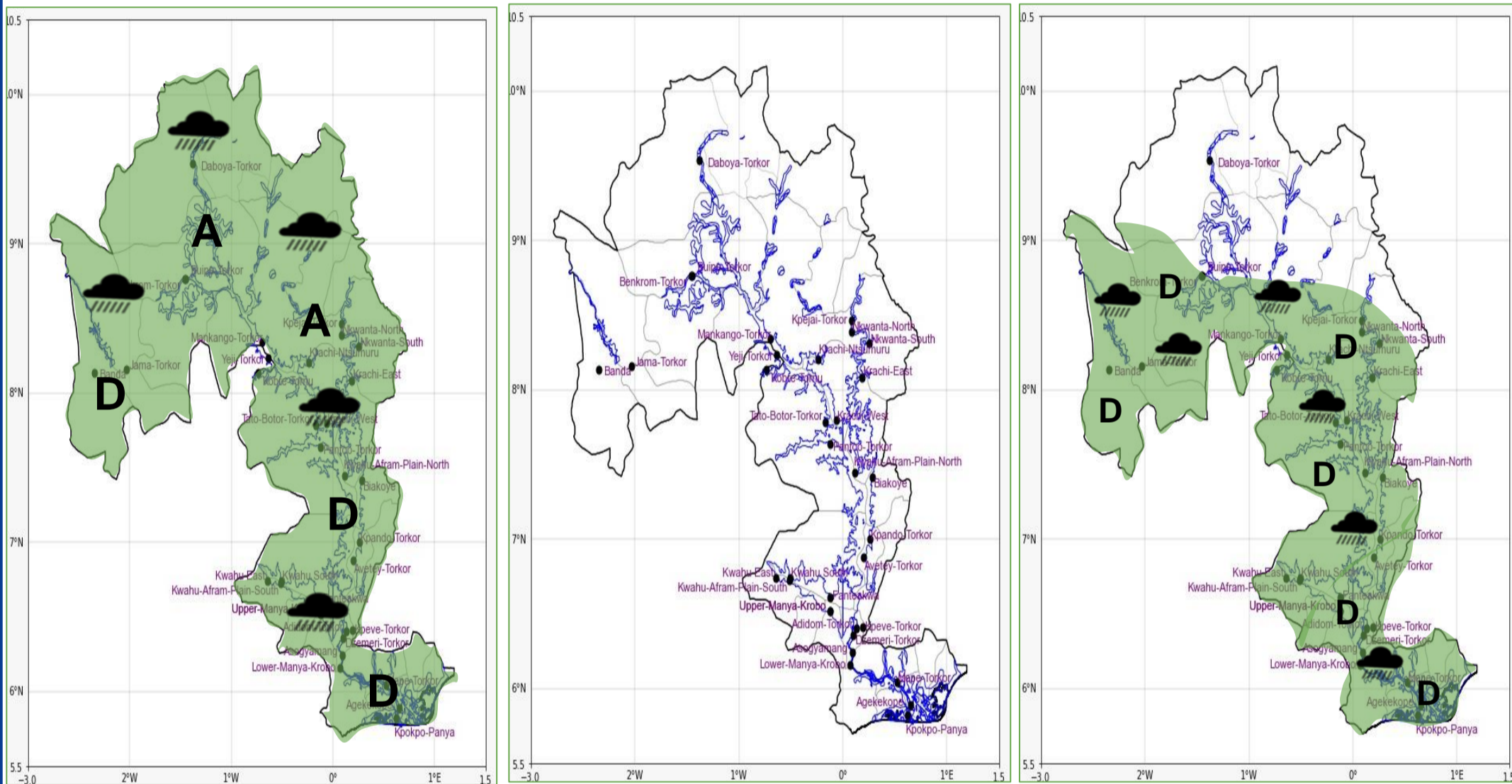




INLAND WATER IMPACT-BASED FORECAST

The lake and its neighbouring areas are anticipated to experience broken cloud cover, becoming overcast and developing into rain during the forecast period. Meanwhile, thunderstorms with rainfall of varying intensities are likely across the lake area tonight.

EVENING (12/06/2026)	MORNING (13/06/2026)	AFTERNOON (13/06/2026)
----------------------	----------------------	------------------------



Date
12/06/2026
Time Issued
4:00 PM
Valid From
06:00 PM
Nowcasting Risk
Take Action
Be aware
Low risk
No risk

Likelihood ↑	Weather Forecast Risk Table			
	High (>60%)	G	H	I
	Medium (40%-60%)	D	E	F
Low (<40%)	A	B	C	
	Low	Medium	High	

Impact →

Time	Surface Wind	Visibility	Temperature
12 hours	SE/S 05 Max 18 kt	(4 – 10) km	(23 – 32) °C
24 hours	S/SW 05 Max 19 kt	(4 – 10) km	(22 – 32) °C