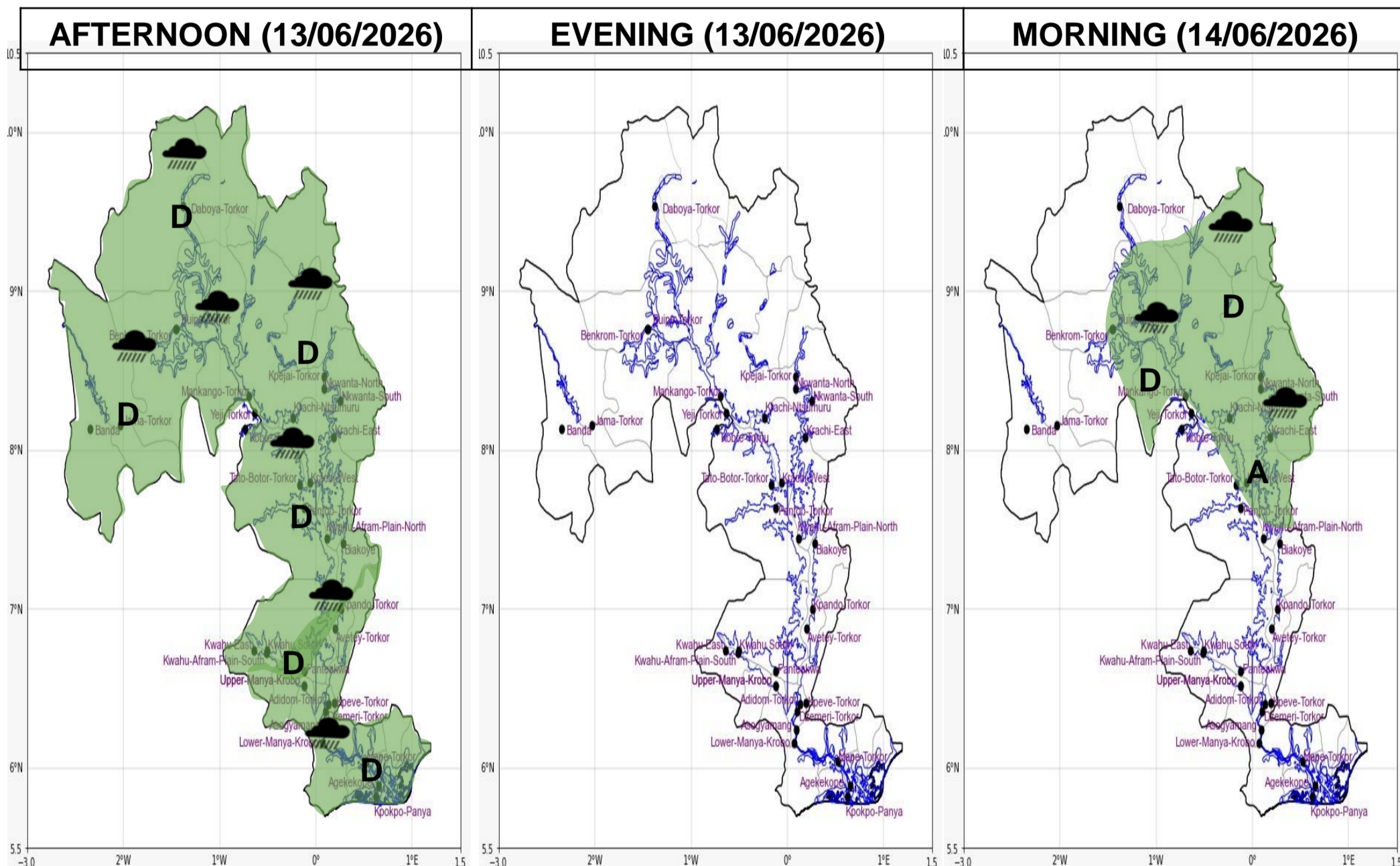




## INLAND WATER IMPACT-BASED FORECAST

### WEATHER SUMMARY

The lake and its vicinity are expected to see varying cloud cover during the forecast period. There is a 40 to 60% chance of scattered light-to-moderate rain and thunderstorms affecting areas across the lake and its surroundings from the afternoon through the evening period and into the morning.



Date
13/06/2026
Time Issued
10:00 AM
Valid From
12:00 PM
Nowcasting Risk
<b>Take Action</b>
<b>Be aware</b>
<b>Low risk</b>
<b>No risk</b>

Weather Forecast Risk Table				
Likelihood ↑	High (>60%)	G	H	I
	Medium (40%-60%)	D	E	F
	Low (<40%)	A	B	C
		Low	Medium	High
		Impact →		

Time	Surface Wind	Visibility	Temperature
12 hours	E/NE 05 Max 18 kt	(3 – 10) km	(23 – 34) °C
24 hours	S/SW 05 Max 18kt	(4 – 10) km	(24 – 32) °C