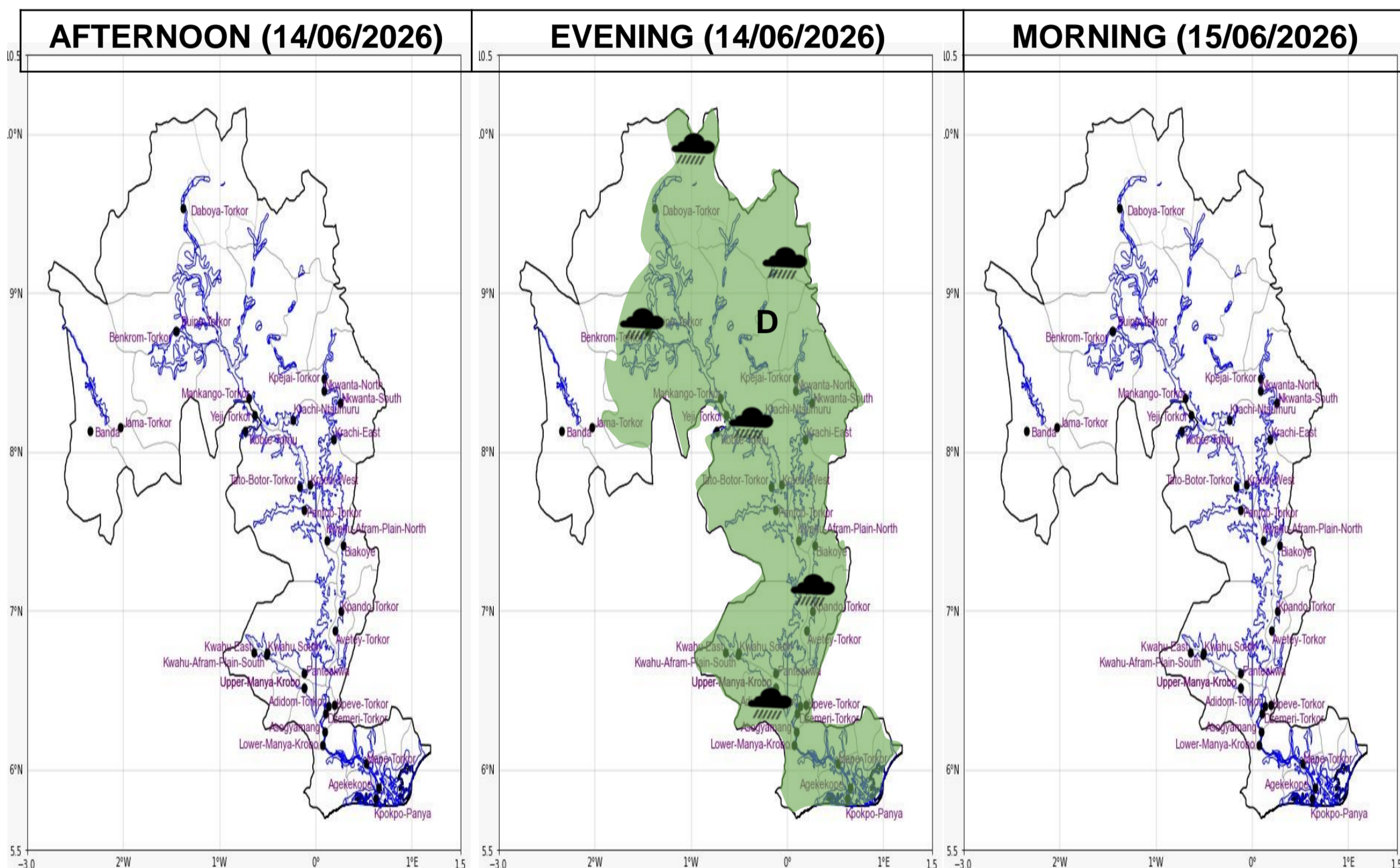




## INLAND WATER IMPACT-BASED FORECAST

### WEATHER SUMMARY

Expect sunny spells across the lake and its surrounding areas this afternoon, becoming partly cloudy with a 40% chance of thunderstorms and rain of varying intensity along the eastern portions of the lake from late afternoon, migrating to the west by evening.



Date
14/06/2026
Time Issued
10:00 AM
Valid From
12:00 PM
Nowcasting Risk
<b>Take Action</b>
<b>Be aware</b>
<b>Low risk</b>
<b>No risk</b>

Likelihood ↑	Weather Forecast Risk Table			
	High (>60%)	G	H	I
	Medium (40%-60%)	D	E	F
Low (<40%)	A	B	C	
	Low	Medium	High	
	Impact →			

Time	Surface Wind	Visibility	Temperature
12 hours	W/SW 05 Max 15 kt	(3 – 10) km	(23 – 33) °C
24 hours	S/SW 05 Max 18kt	(4 – 10) km	(24 – 31) °C