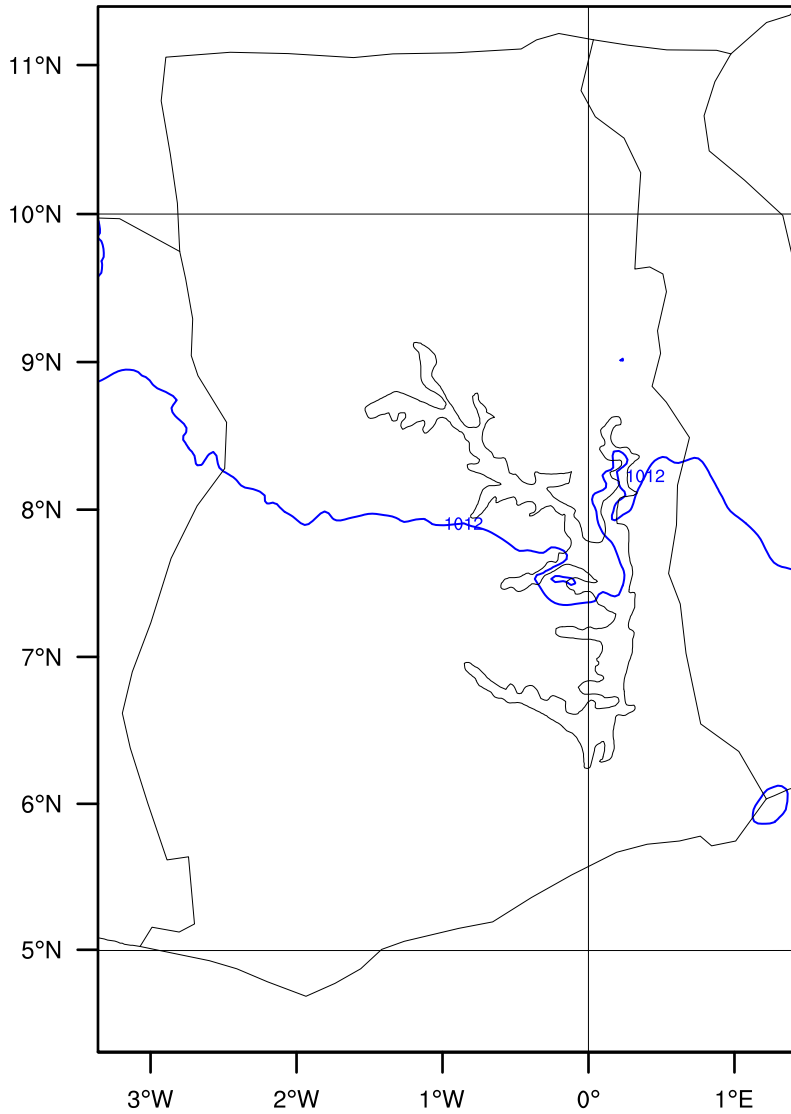


GMet (3DVar)

Init: 2026-06-19_06:00:00
Valid: 2026-06-19_06:00:00

Precipitation Tendency from 2026-06-19_06:00:00 to 2026-06-19_06:00:00 (mm)
Sea Level Pressure (hPa)

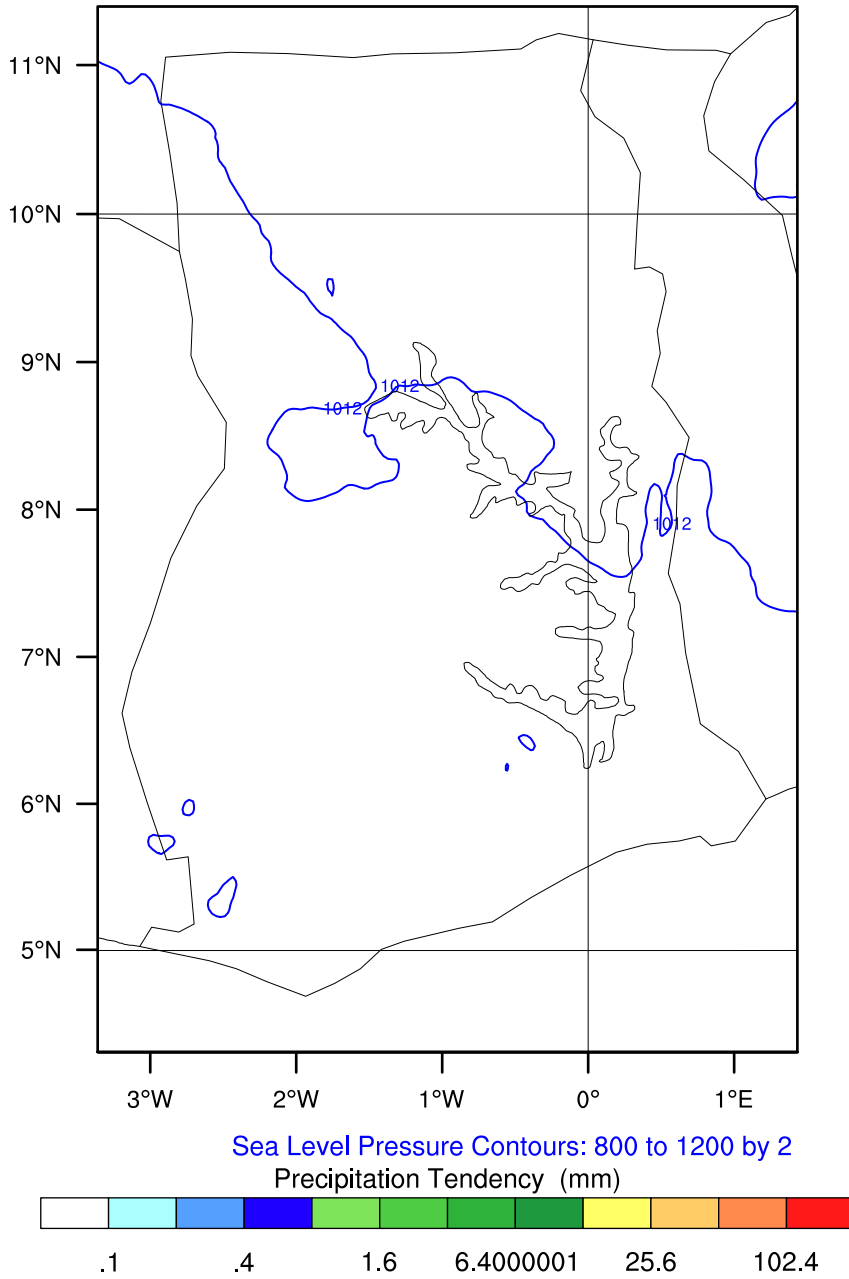


Sea Level Pressure Contours: 800 to 1200 by 2

GMet (3DVar)

Init: 2026-06-19_06:00:00
Valid: 2026-06-19_07:00:02

Precipitation Tendency from 2026-06-19_06:00:00 to 2026-06-19_07:00:02 (mm)
Sea Level Pressure (hPa)

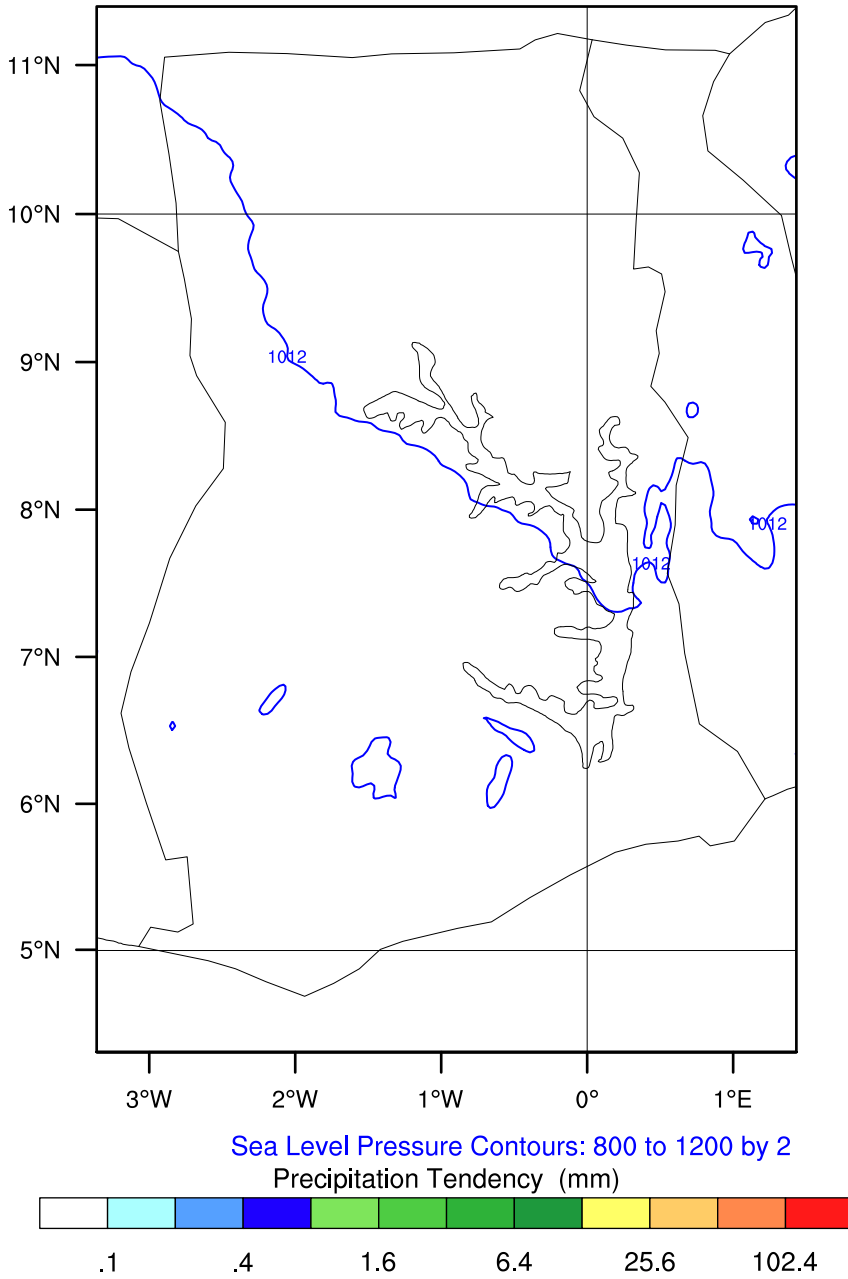


OUTPUT FROM WRF V4.6.1 MODEL
WE = 178 ; SN = 265 ; Levels = 40 ; Dis = 3km ; Phys Opt = 8 ; PBL Opt = 2 ; Cu Opt = 0

GMet (3DVar)

Init: 2026-06-19_06:00:00
Valid: 2026-06-19_08:00:02

Precipitation Tendency from 2026-06-19_07:00:02 to 2026-06-19_08:00:02 (mm)
Sea Level Pressure (hPa)

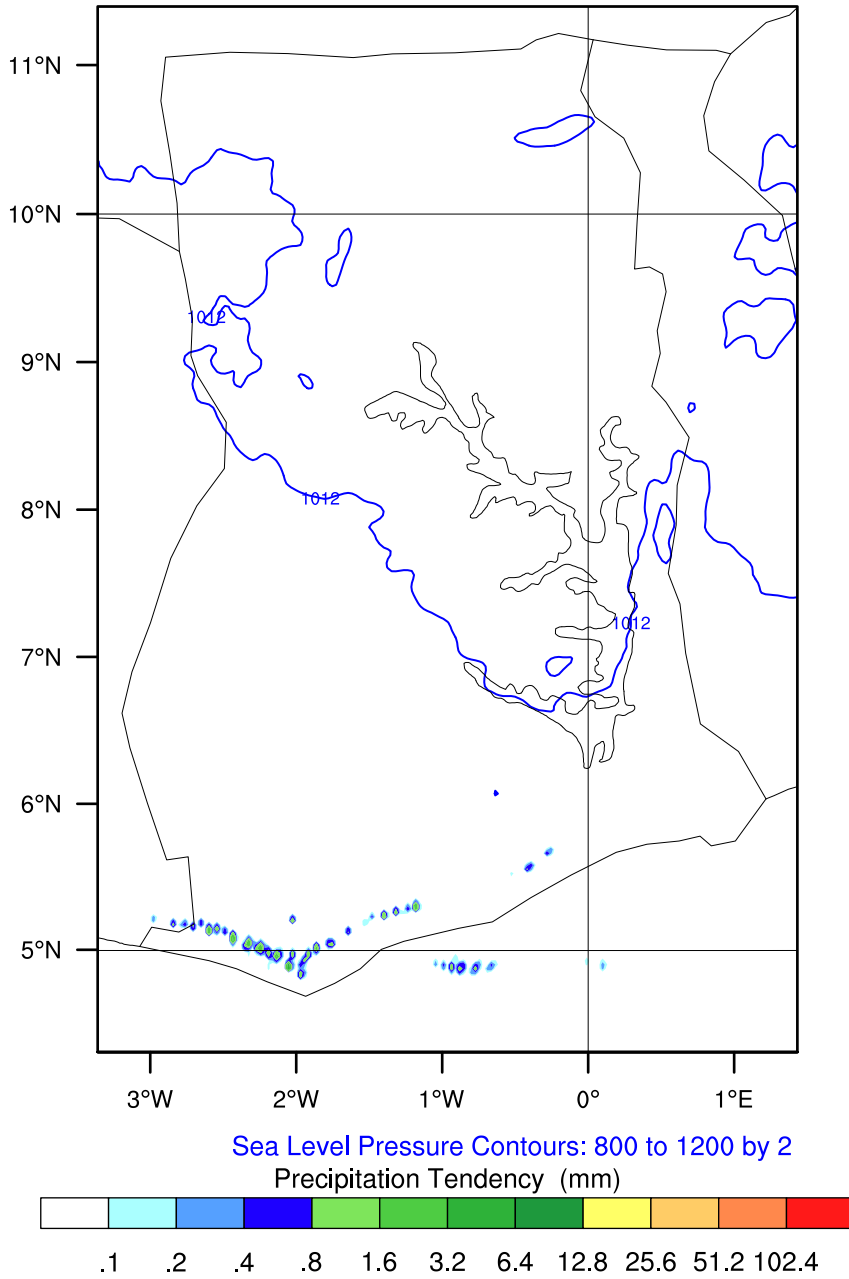


OUTPUT FROM WRF V4.6.1 MODEL
WE = 178 ; SN = 265 ; Levels = 40 ; Dis = 3km ; Phys Opt = 8 ; PBL Opt = 2 ; Cu Opt = 0

GMet (3DVar)

Init: 2026-06-19_06:00:00
Valid: 2026-06-19_09:00:02

Precipitation Tendency from 2026-06-19_08:00:02 to 2026-06-19_09:00:02 (mm)
Sea Level Pressure (hPa)

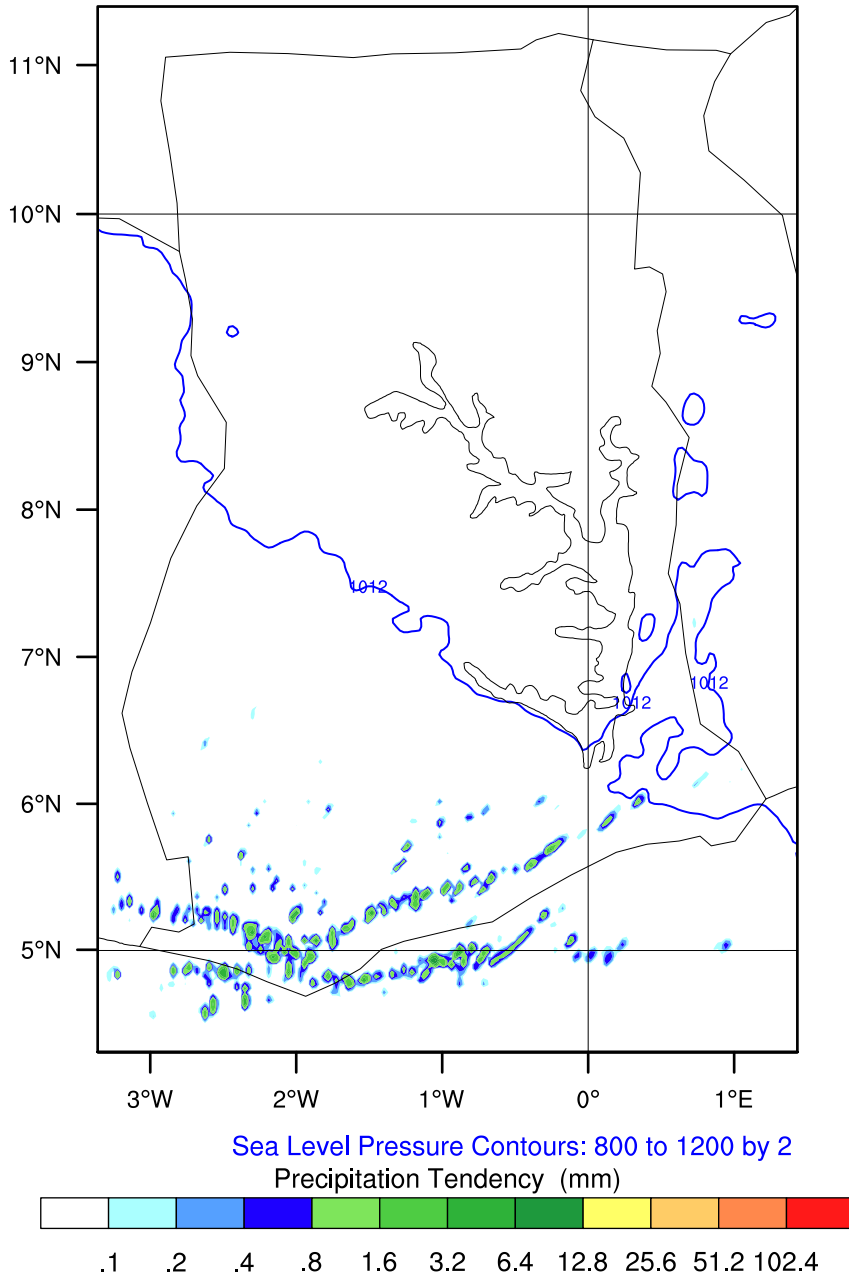


OUTPUT FROM WRF V4.6.1 MODEL
WE = 178 ; SN = 265 ; Levels = 40 ; Dis = 3km ; Phys Opt = 8 ; PBL Opt = 2 ; Cu Opt = 0

GMet (3DVar)

Init: 2026-06-19_06:00:00
Valid: 2026-06-19_10:00:02

Precipitation Tendency from 2026-06-19_09:00:02 to 2026-06-19_10:00:02 (mm)
Sea Level Pressure (hPa)

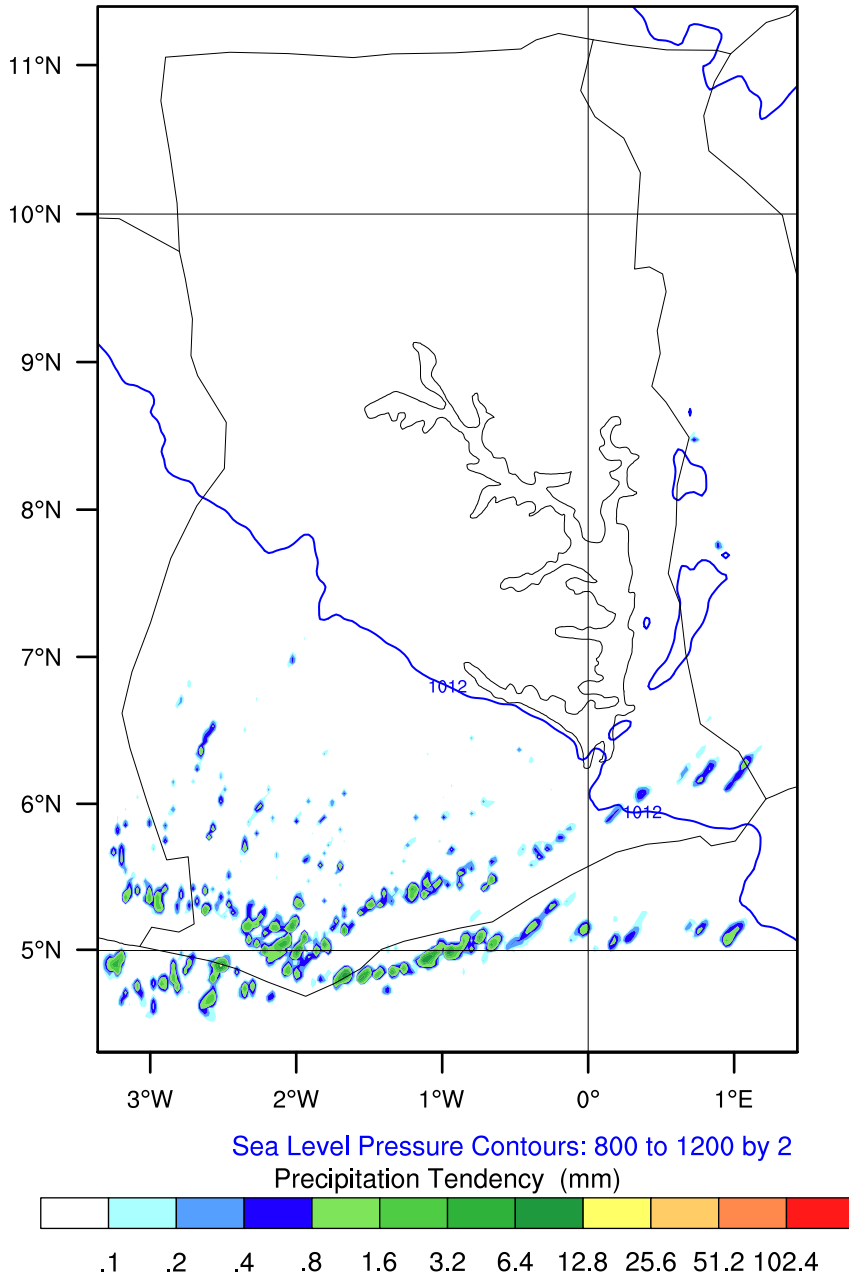


OUTPUT FROM WRF V4.6.1 MODEL
WE = 178 ; SN = 265 ; Levels = 40 ; Dis = 3km ; Phys Opt = 8 ; PBL Opt = 2 ; Cu Opt = 0

GMet (3DVar)

Init: 2026-06-19_06:00:00
Valid: 2026-06-19_11:00:02

Precipitation Tendency from 2026-06-19_10:00:02 to 2026-06-19_11:00:02 (mm)
Sea Level Pressure (hPa)

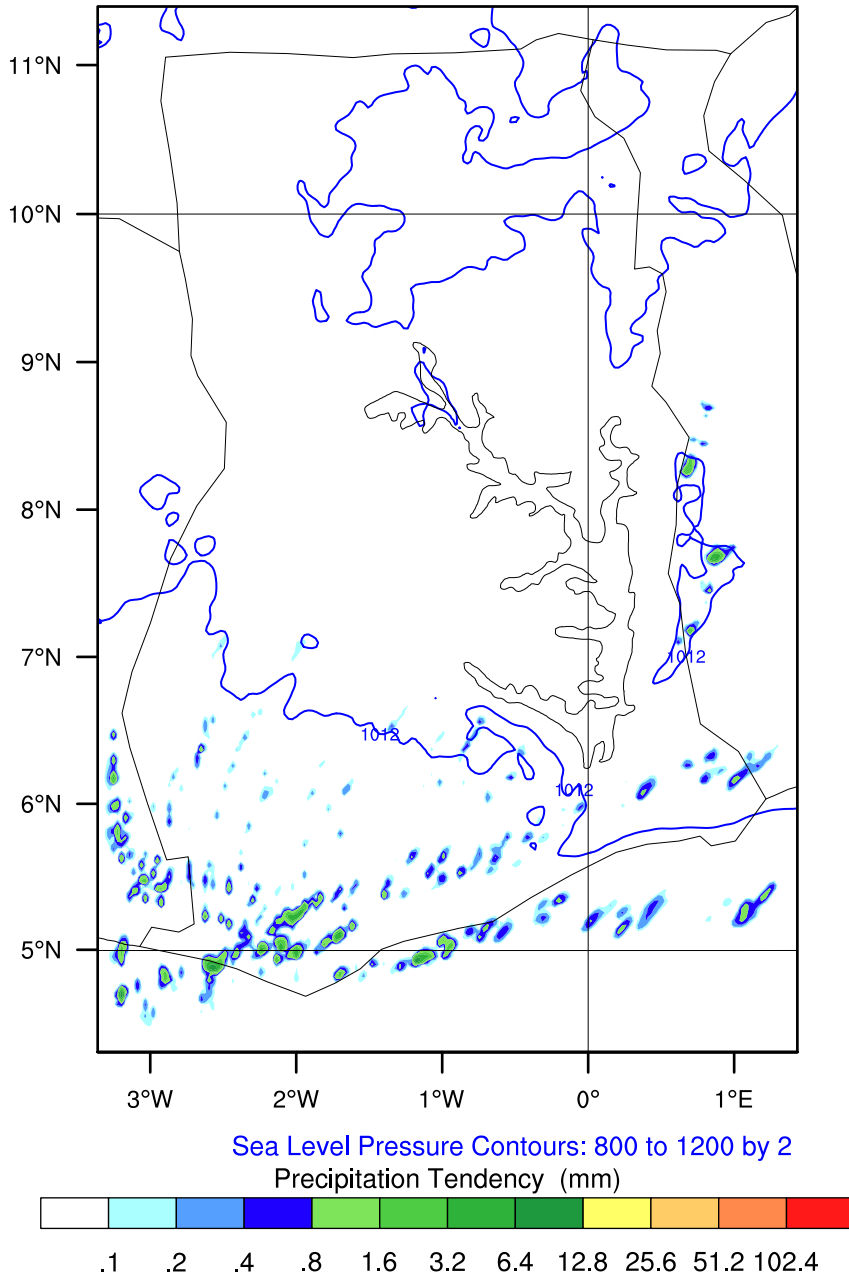


OUTPUT FROM WRF V4.6.1 MODEL
WE = 178 ; SN = 265 ; Levels = 40 ; Dis = 3km ; Phys Opt = 8 ; PBL Opt = 2 ; Cu Opt = 0

GMet (3DVar)

Init: 2026-06-19_06:00:00
Valid: 2026-06-19_12:00:00

Precipitation Tendency from 2026-06-19_11:00:02 to 2026-06-19_12:00:00 (mm)
Sea Level Pressure (hPa)

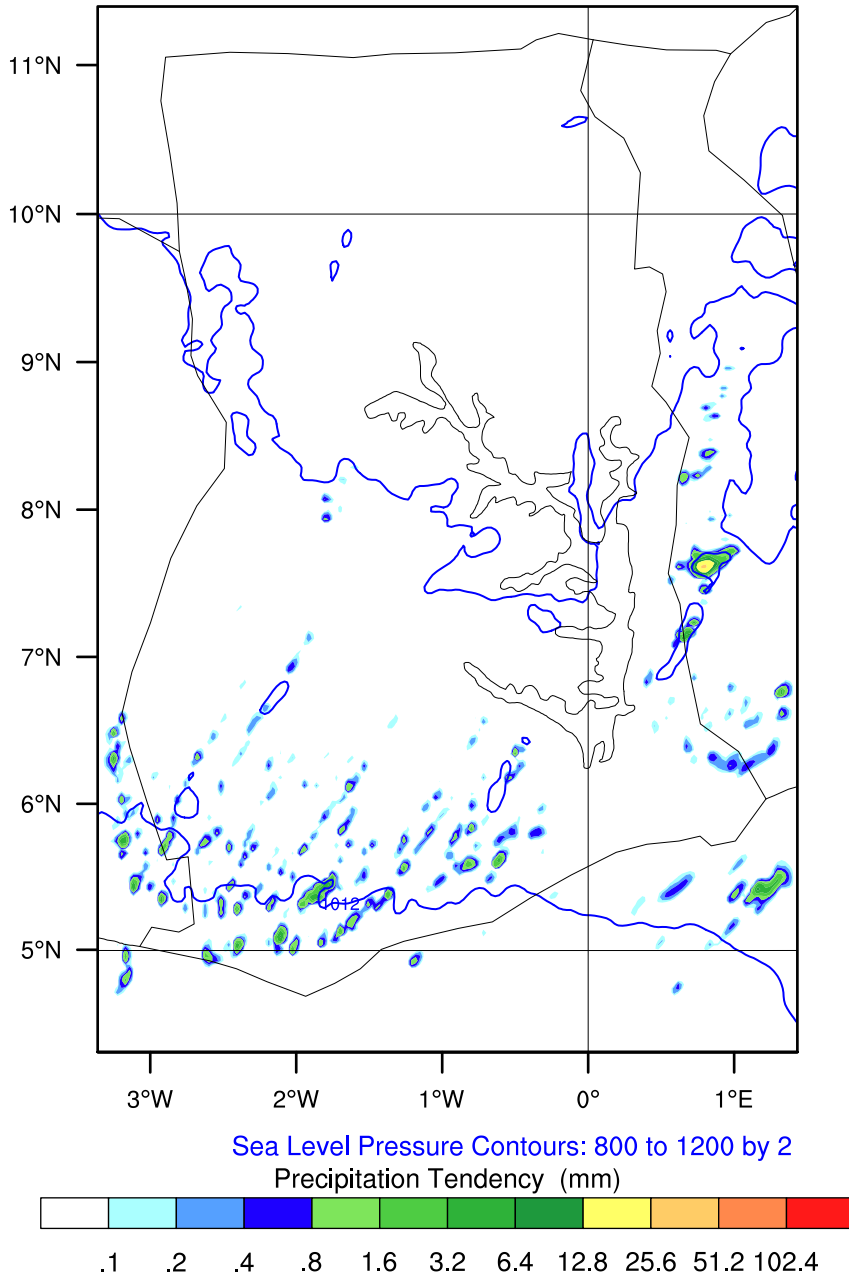


OUTPUT FROM WRF V4.6.1 MODEL
WE = 178 ; SN = 265 ; Levels = 40 ; Dis = 3km ; Phys Opt = 8 ; PBL Opt = 2 ; Cu Opt = 0

GMet (3DVar)

Init: 2026-06-19_06:00:00
Valid: 2026-06-19_13:00:00

Precipitation Tendency from 2026-06-19_12:00:00 to 2026-06-19_13:00:00 (mm)
Sea Level Pressure (hPa)

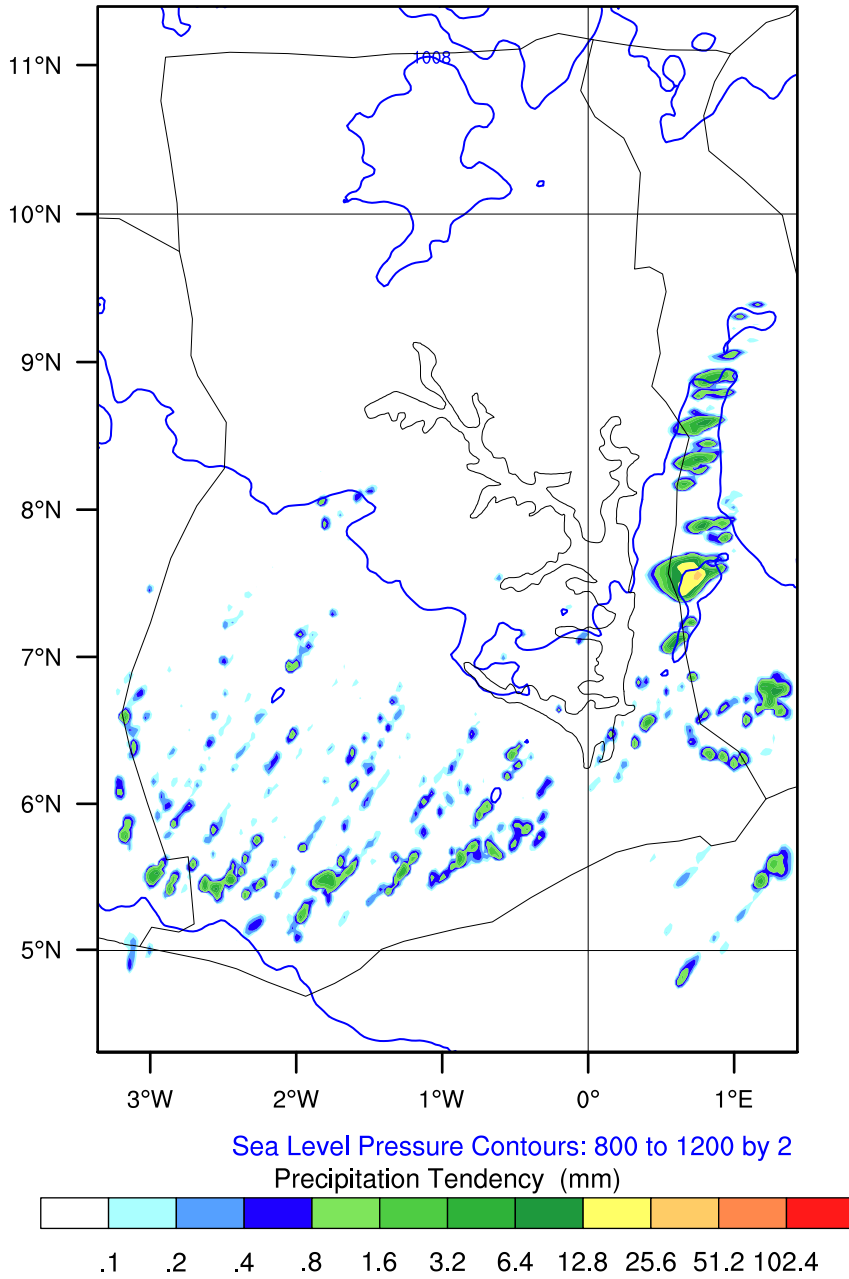


OUTPUT FROM WRF V4.6.1 MODEL
WE = 178 ; SN = 265 ; Levels = 40 ; Dis = 3km ; Phys Opt = 8 ; PBL Opt = 2 ; Cu Opt = 0

GMet (3DVar)

Init: 2026-06-19_06:00:00
Valid: 2026-06-19_14:00:07

Precipitation Tendency from 2026-06-19_13:00:00 to 2026-06-19_14:00:07 (mm)
Sea Level Pressure (hPa)

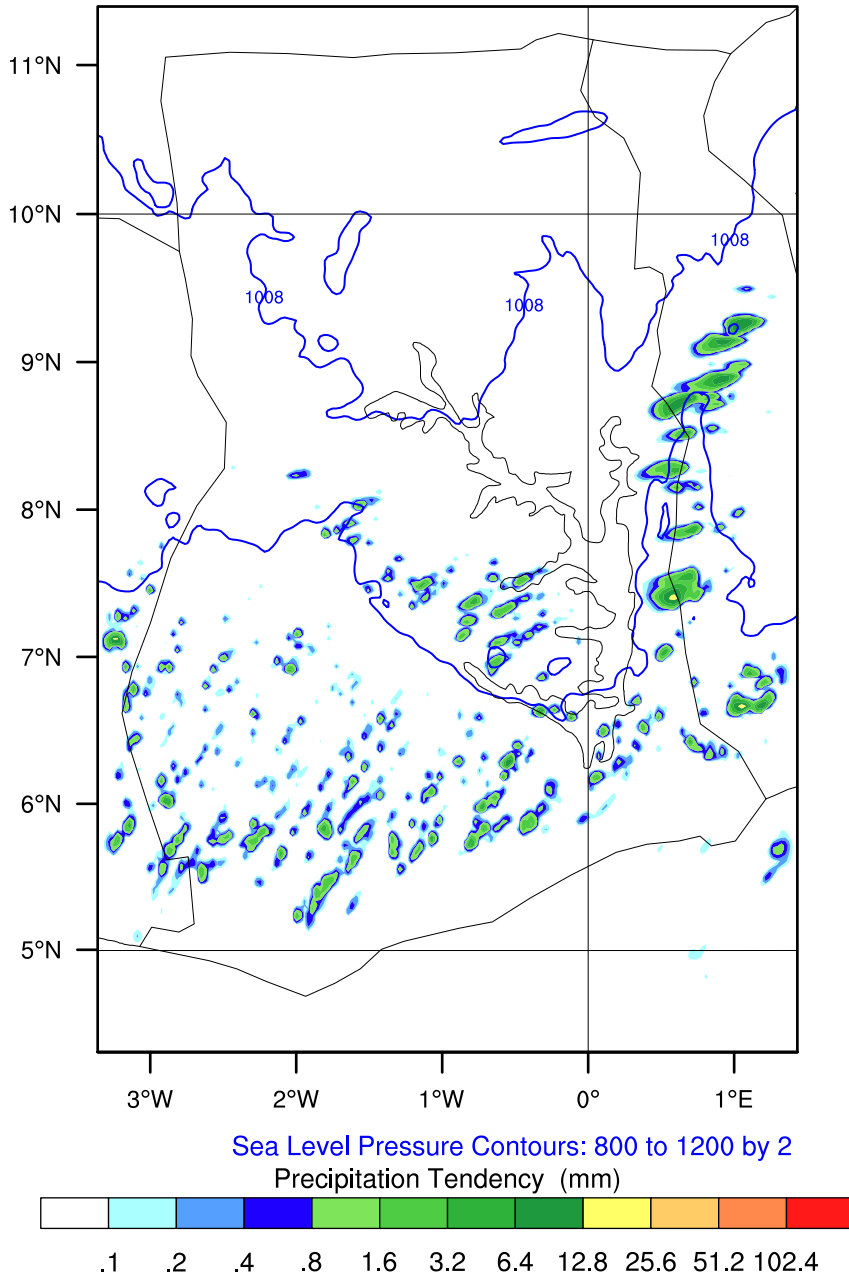


OUTPUT FROM WRF V4.6.1 MODEL
WE = 178 ; SN = 265 ; Levels = 40 ; Dis = 3km ; Phys Opt = 8 ; PBL Opt = 2 ; Cu Opt = 0

GMet (3DVar)

Init: 2026-06-19_06:00:00
Valid: 2026-06-19_15:00:00

Precipitation Tendency from 2026-06-19_14:00:07 to 2026-06-19_15:00:00 (mm)
Sea Level Pressure (hPa)

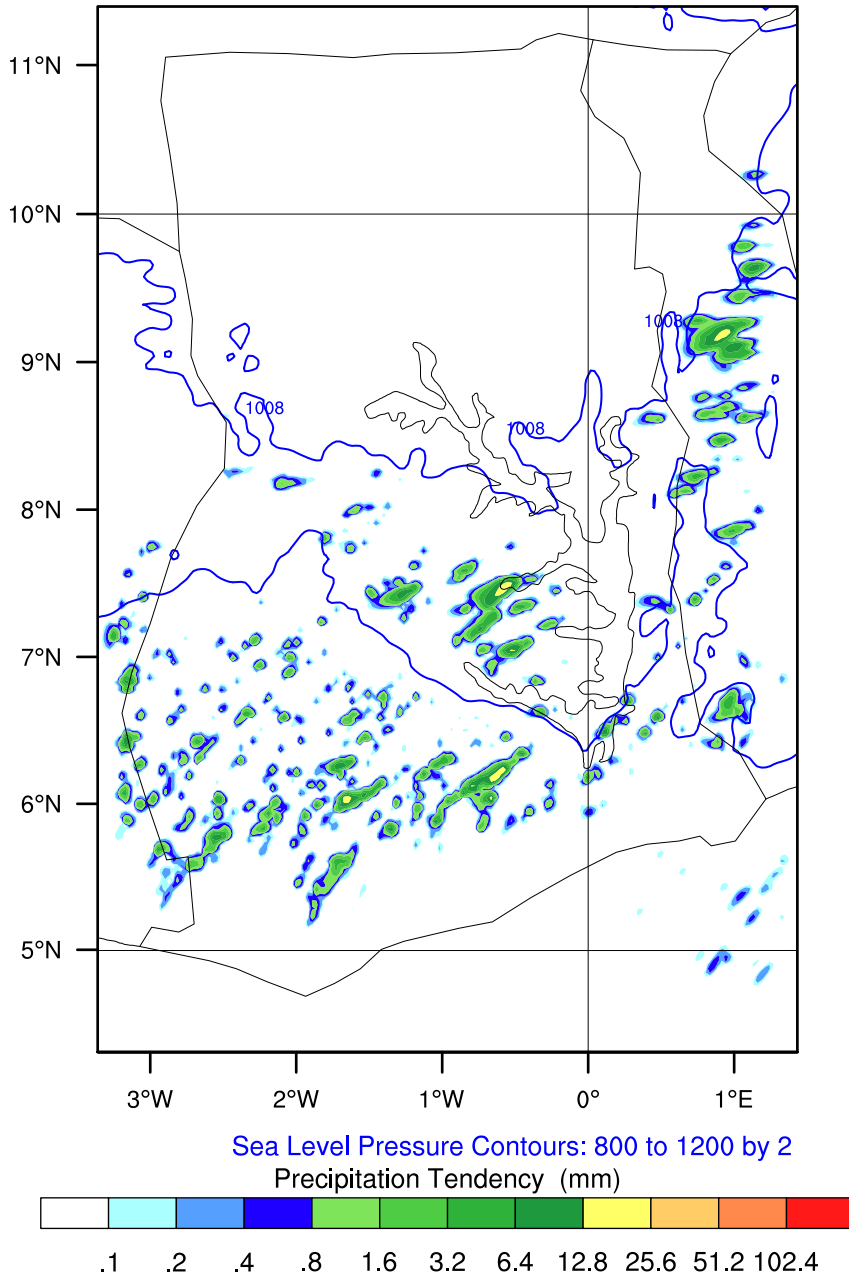


OUTPUT FROM WRF V4.6.1 MODEL
WE = 178 ; SN = 265 ; Levels = 40 ; Dis = 3km ; Phys Opt = 8 ; PBL Opt = 2 ; Cu Opt = 0

GMet (3DVar)

Init: 2026-06-19_06:00:00
Valid: 2026-06-19_16:00:06

Precipitation Tendency from 2026-06-19_15:00:00 to 2026-06-19_16:00:06 (mm)
Sea Level Pressure (hPa)

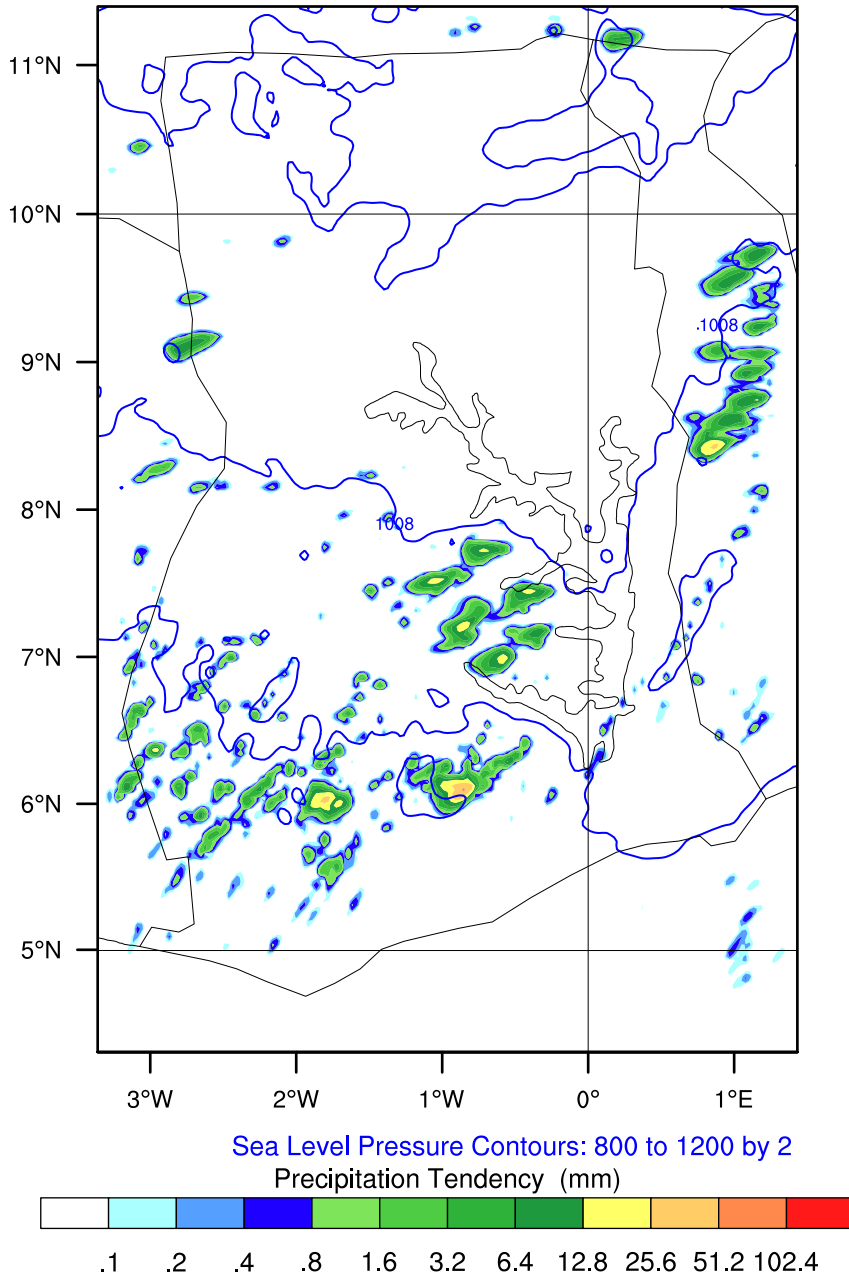


OUTPUT FROM WRF V4.6.1 MODEL
WE = 178 ; SN = 265 ; Levels = 40 ; Dis = 3km ; Phys Opt = 8 ; PBL Opt = 2 ; Cu Opt = 0

GMet (3DVar)

Init: 2026-06-19_06:00:00
Valid: 2026-06-19_17:00:01

Precipitation Tendency from 2026-06-19_16:00:06 to 2026-06-19_17:00:01 (mm)
Sea Level Pressure (hPa)

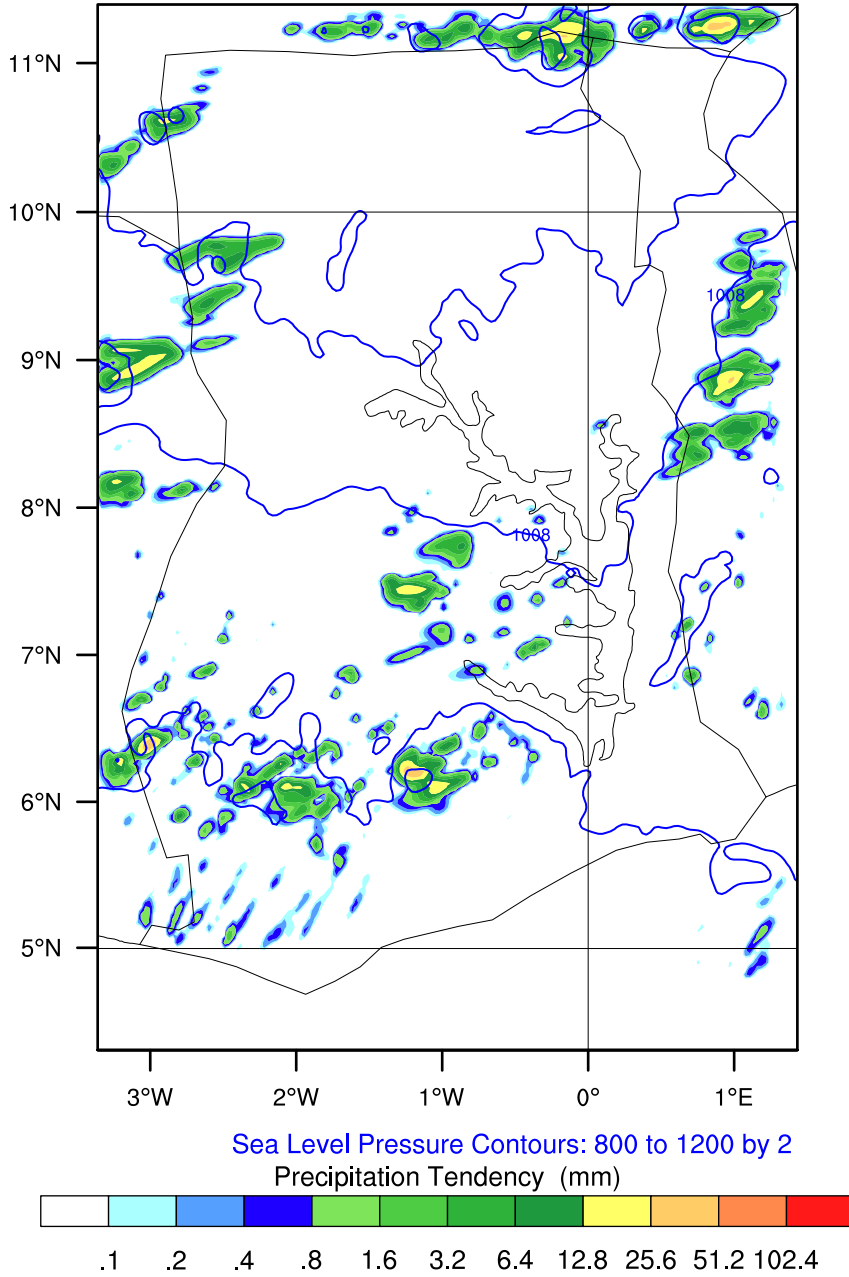


OUTPUT FROM WRF V4.6.1 MODEL
WE = 178 ; SN = 265 ; Levels = 40 ; Dis = 3km ; Phys Opt = 8 ; PBL Opt = 2 ; Cu Opt = 0

GMet (3DVar)

Init: 2026-06-19_06:00:00
Valid: 2026-06-19_18:00:00

Precipitation Tendency from 2026-06-19_17:00:01 to 2026-06-19_18:00:00 (mm)
Sea Level Pressure (hPa)

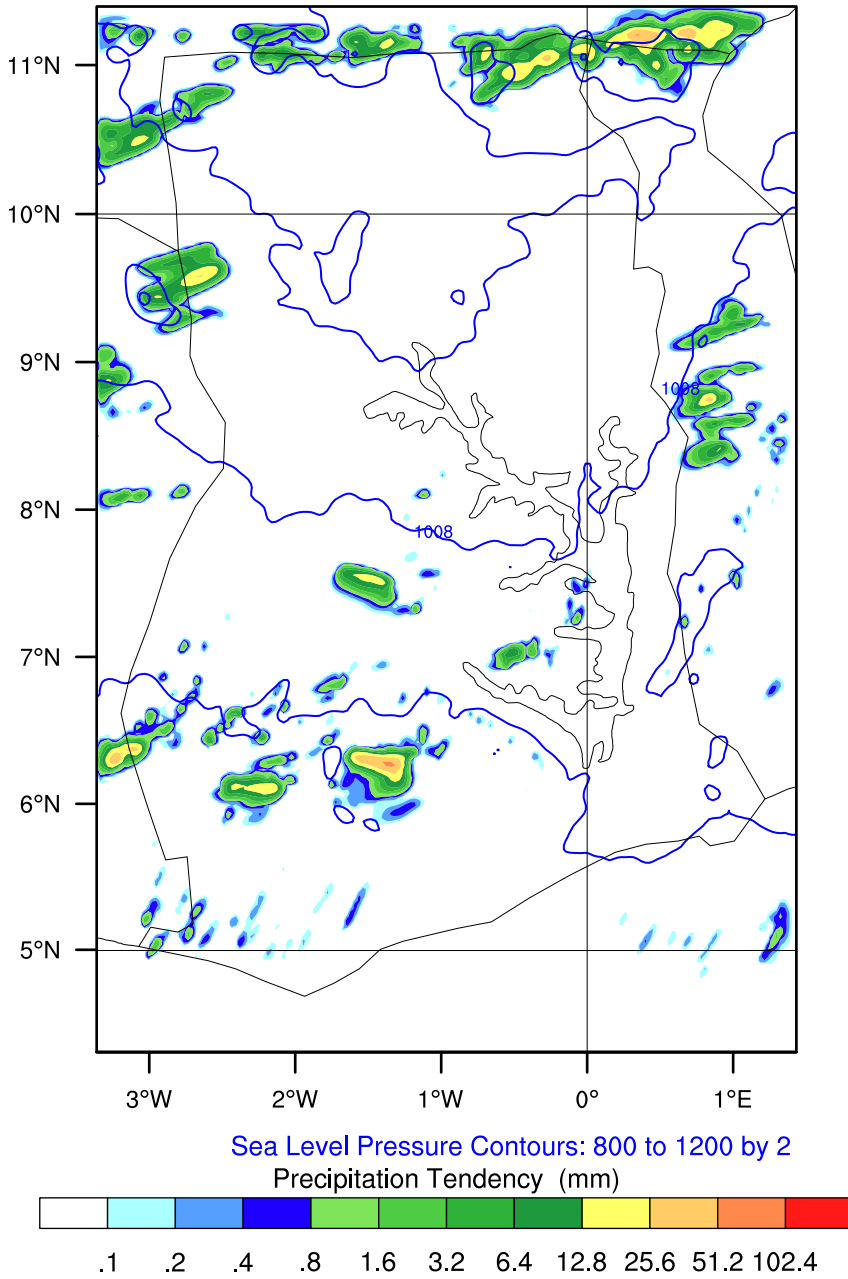


OUTPUT FROM WRF V4.6.1 MODEL
WE = 178 ; SN = 265 ; Levels = 40 ; Dis = 3km ; Phys Opt = 8 ; PBL Opt = 2 ; Cu Opt = 0

GMet (3DVar)

Init: 2026-06-19_06:00:00
Valid: 2026-06-19_19:00:05

Precipitation Tendency from 2026-06-19_18:00:00 to 2026-06-19_19:00:05 (mm)
Sea Level Pressure (hPa)

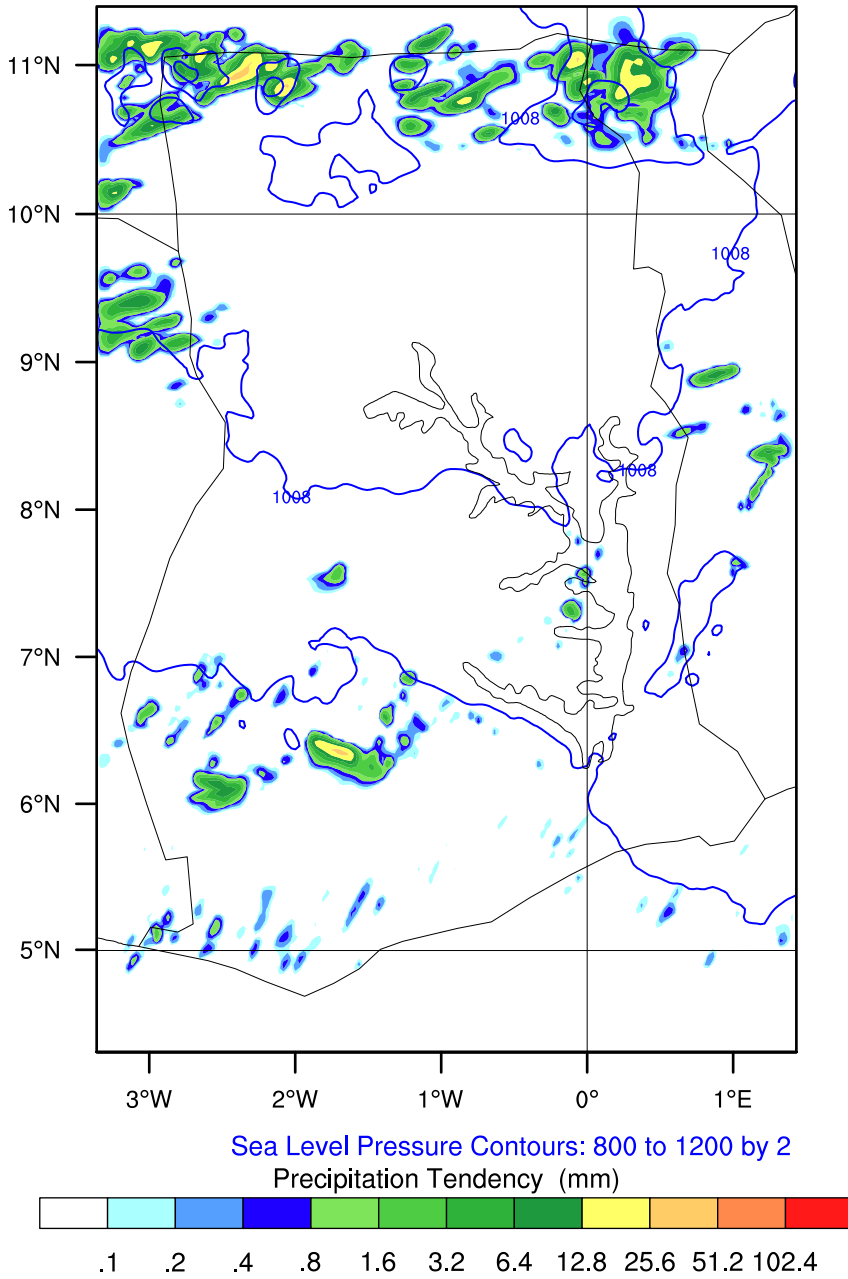


OUTPUT FROM WRF V4.6.1 MODEL
WE = 178 ; SN = 265 ; Levels = 40 ; Dis = 3km ; Phys Opt = 8 ; PBL Opt = 2 ; Cu Opt = 0

GMet (3DVar)

Init: 2026-06-19_06:00:00
Valid: 2026-06-19_20:00:09

Precipitation Tendency from 2026-06-19_19:00:05 to 2026-06-19_20:00:09 (mm)
Sea Level Pressure (hPa)

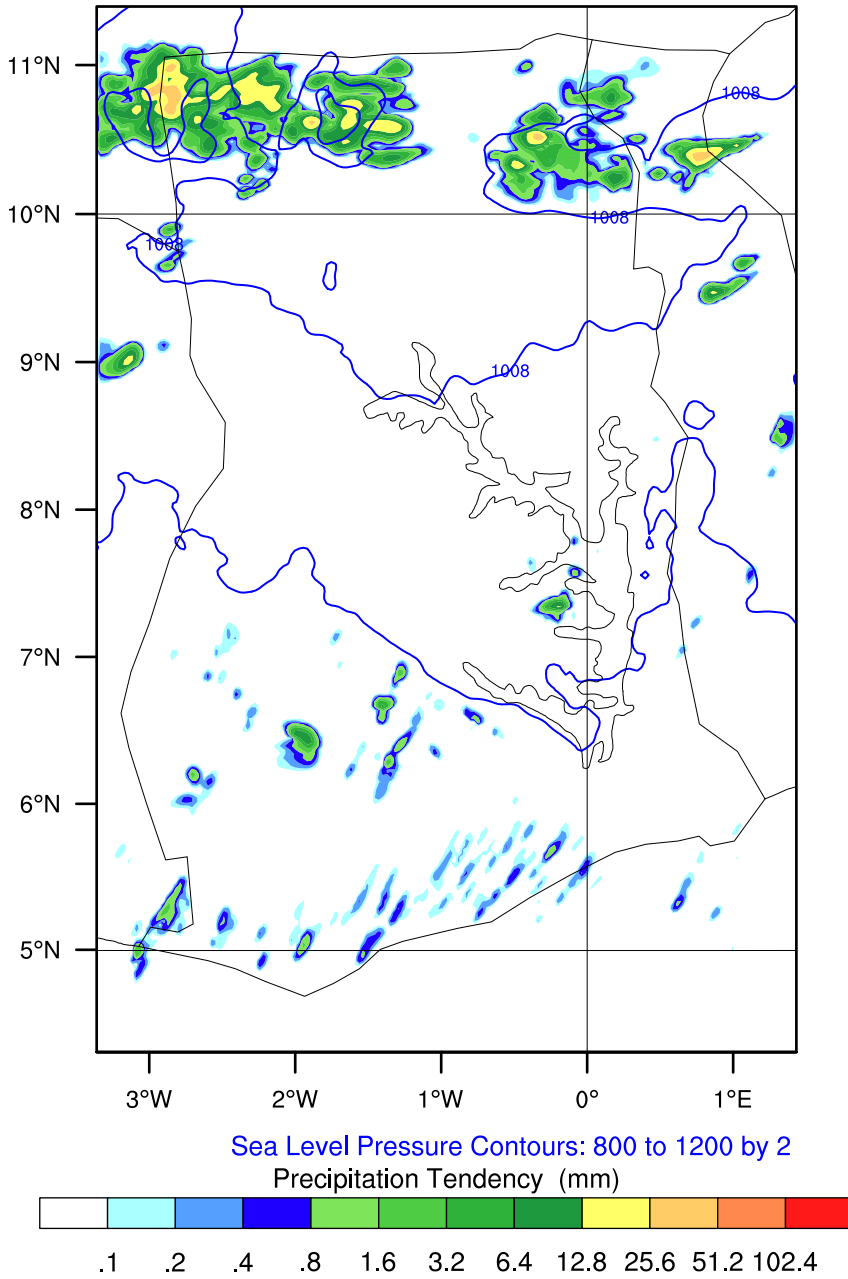


OUTPUT FROM WRF V4.6.1 MODEL
WE = 178 ; SN = 265 ; Levels = 40 ; Dis = 3km ; Phys Opt = 8 ; PBL Opt = 2 ; Cu Opt = 0

GMet (3DVar)

Init: 2026-06-19_06:00:00
Valid: 2026-06-19_21:00:02

Precipitation Tendency from 2026-06-19_20:00:09 to 2026-06-19_21:00:02 (mm)
Sea Level Pressure (hPa)

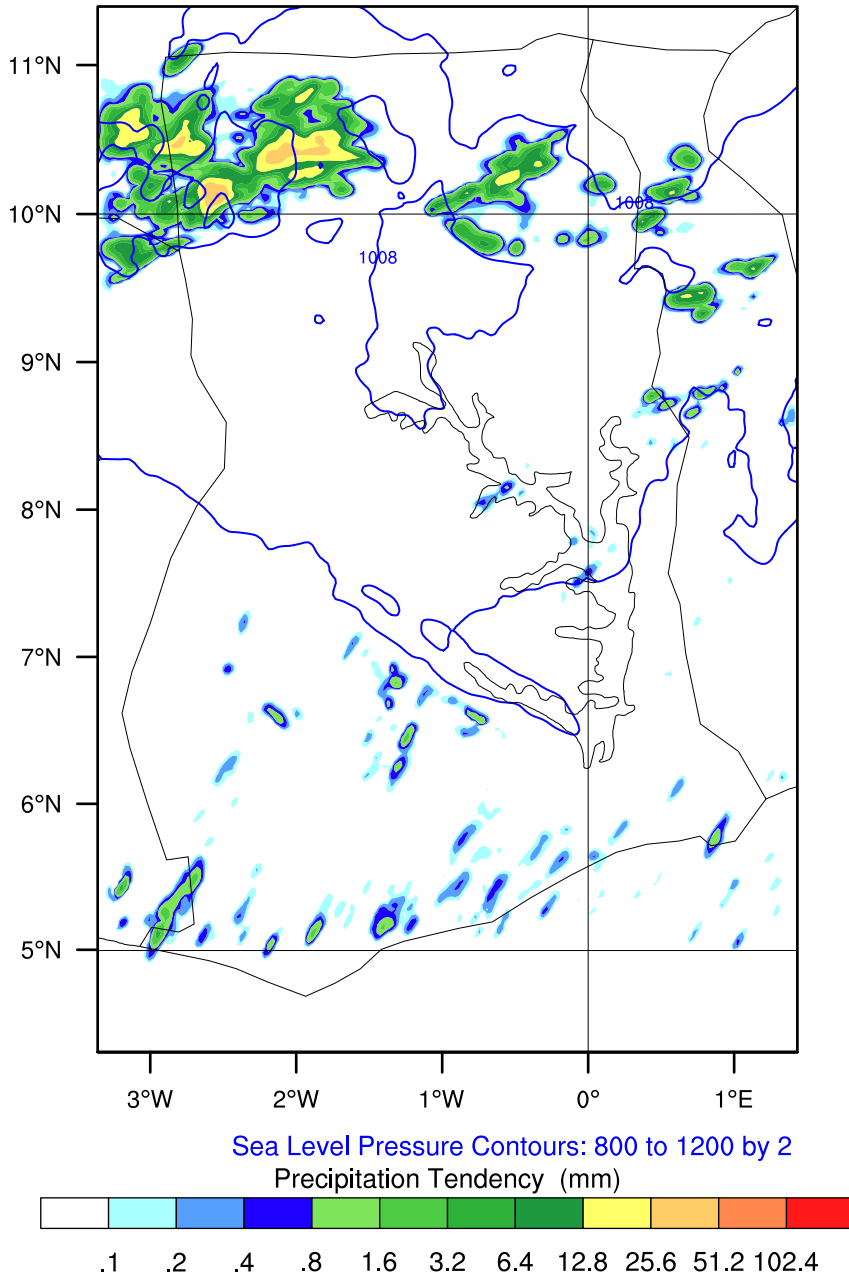


OUTPUT FROM WRF V4.6.1 MODEL
WE = 178 ; SN = 265 ; Levels = 40 ; Dis = 3km ; Phys Opt = 8 ; PBL Opt = 2 ; Cu Opt = 0

GMet (3DVar)

Init: 2026-06-19_06:00:00
Valid: 2026-06-19_22:00:15

Precipitation Tendency from 2026-06-19_21:00:02 to 2026-06-19_22:00:15 (mm)
Sea Level Pressure (hPa)

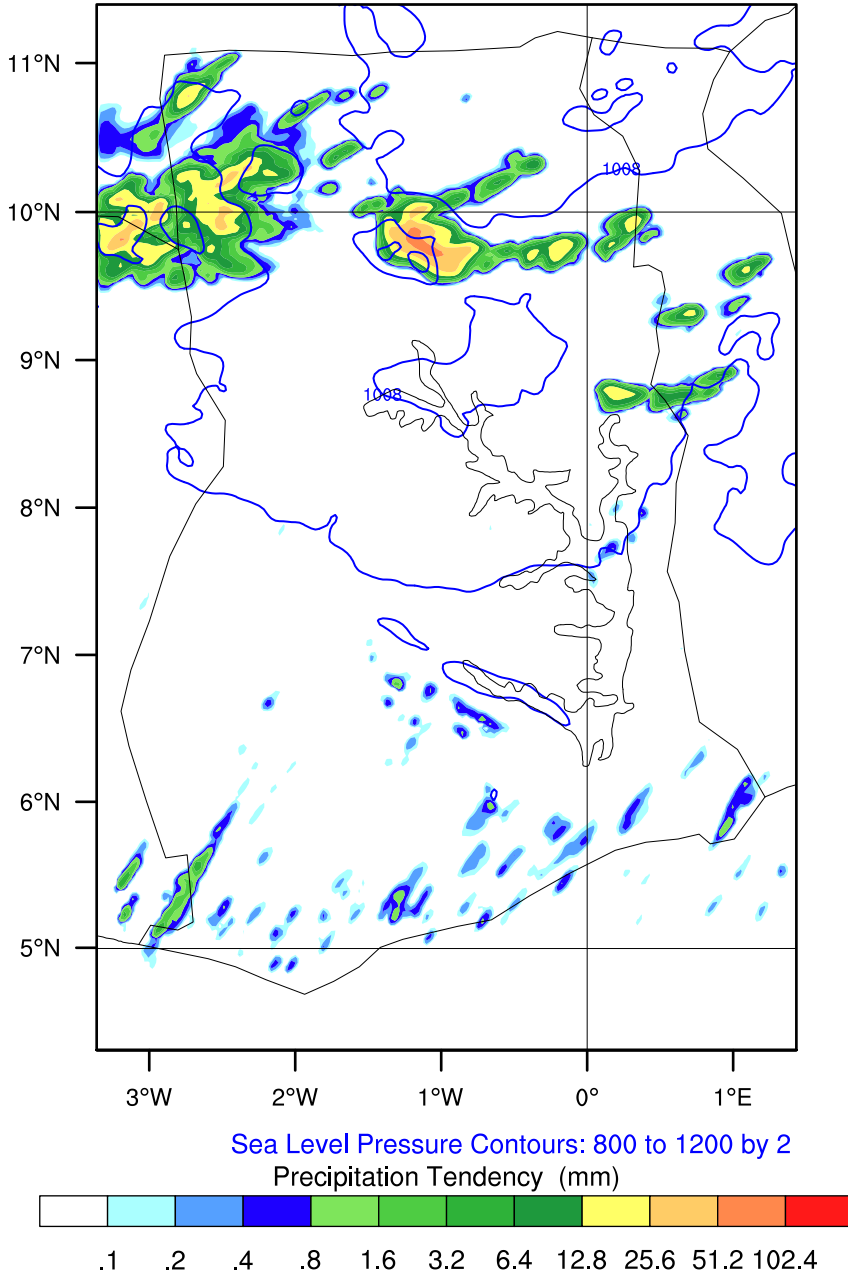


OUTPUT FROM WRF V4.6.1 MODEL
WE = 178 ; SN = 265 ; Levels = 40 ; Dis = 3km ; Phys Opt = 8 ; PBL Opt = 2 ; Cu Opt = 0

GMet (3DVar)

Init: 2026-06-19_06:00:00
Valid: 2026-06-19_23:00:05

Precipitation Tendency from 2026-06-19_22:00:15 to 2026-06-19_23:00:05 (mm)
Sea Level Pressure (hPa)

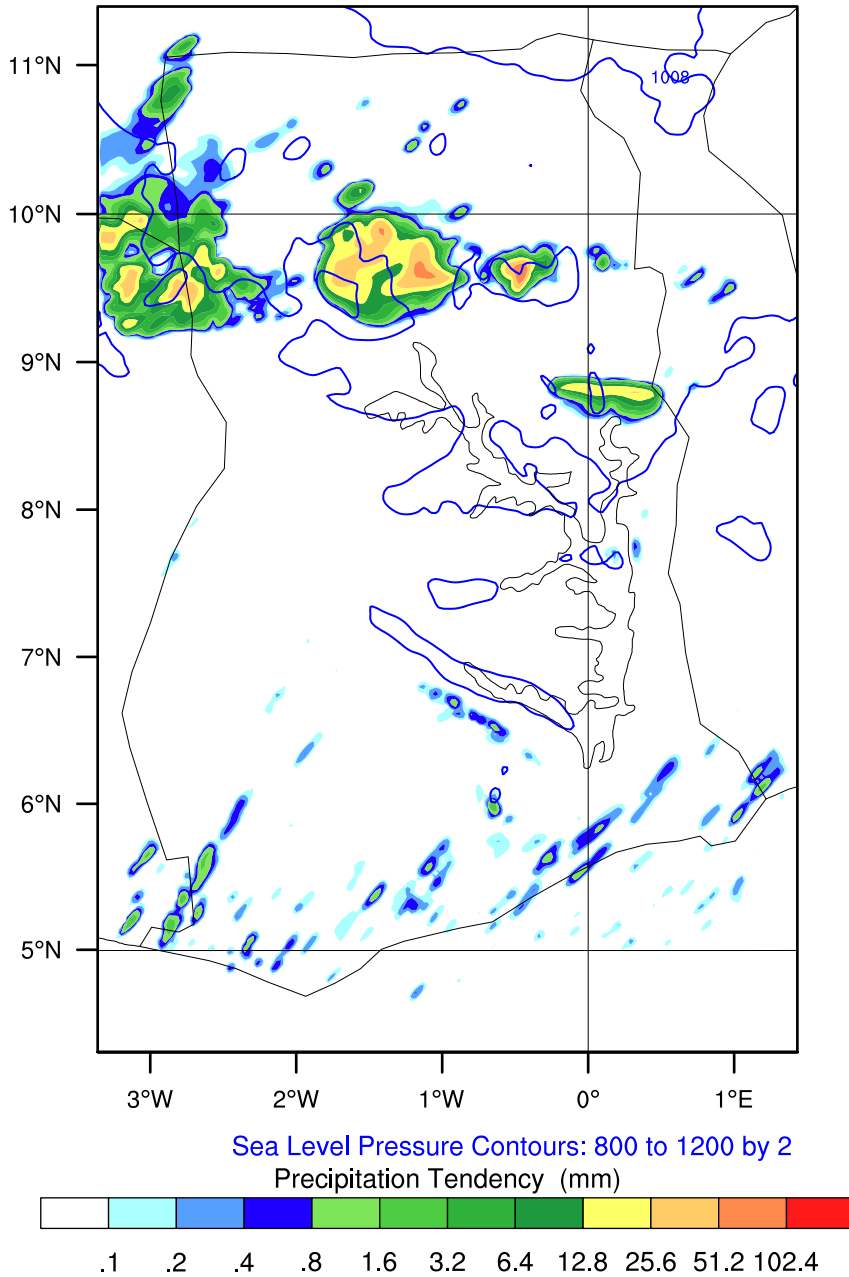


OUTPUT FROM WRF V4.6.1 MODEL
WE = 178 ; SN = 265 ; Levels = 40 ; Dis = 3km ; Phys Opt = 8 ; PBL Opt = 2 ; Cu Opt = 0

GMet (3DVar)

Init: 2026-06-19_06:00:00
Valid: 2026-06-20_00:00:00

Precipitation Tendency from 2026-06-19_23:00:05 to 2026-06-20_00:00:00 (mm)
Sea Level Pressure (hPa)

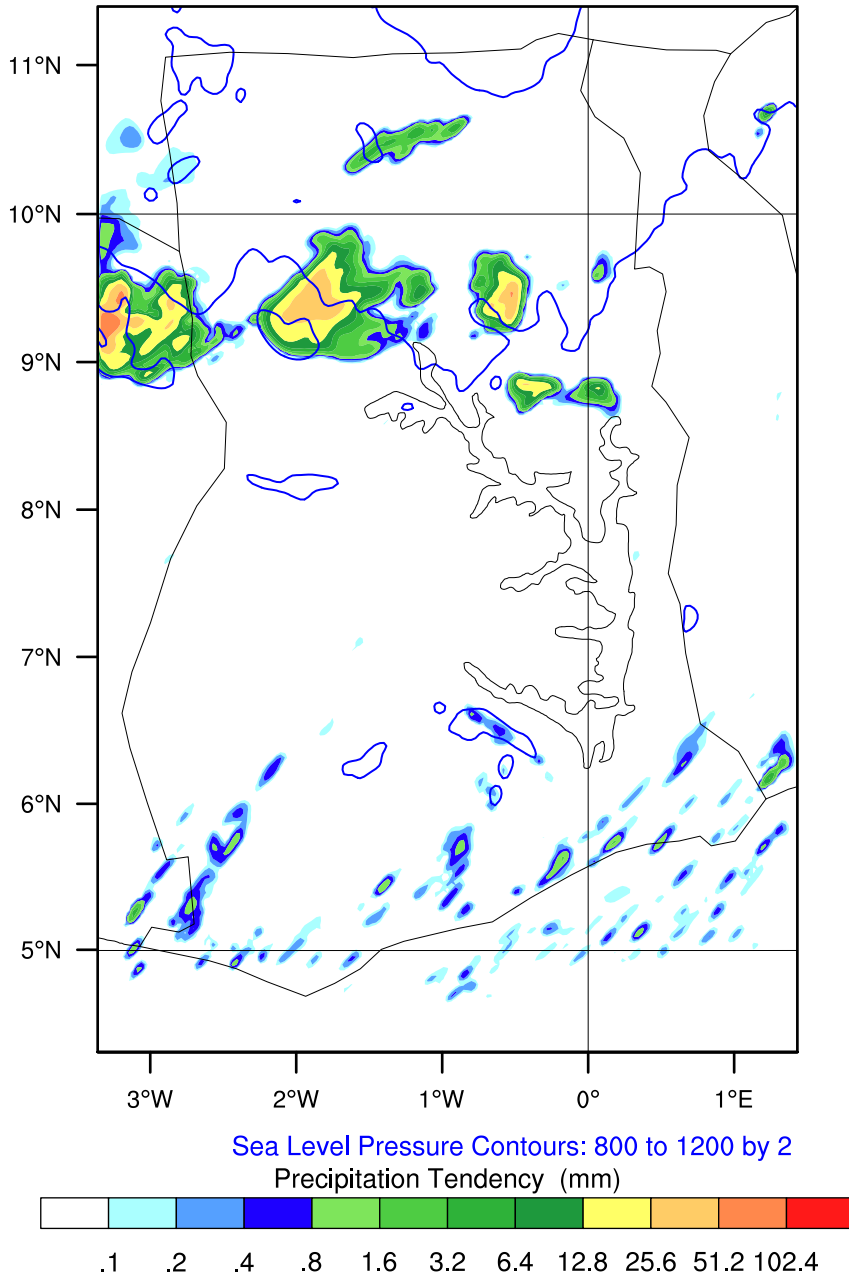


OUTPUT FROM WRF V4.6.1 MODEL
WE = 178 ; SN = 265 ; Levels = 40 ; Dis = 3km ; Phys Opt = 8 ; PBL Opt = 2 ; Cu Opt = 0

GMet (3DVar)

Init: 2026-06-19_06:00:00
Valid: 2026-06-20_01:00:10

Precipitation Tendency from 2026-06-20_00:00:00 to 2026-06-20_01:00:10 (mm)
Sea Level Pressure (hPa)

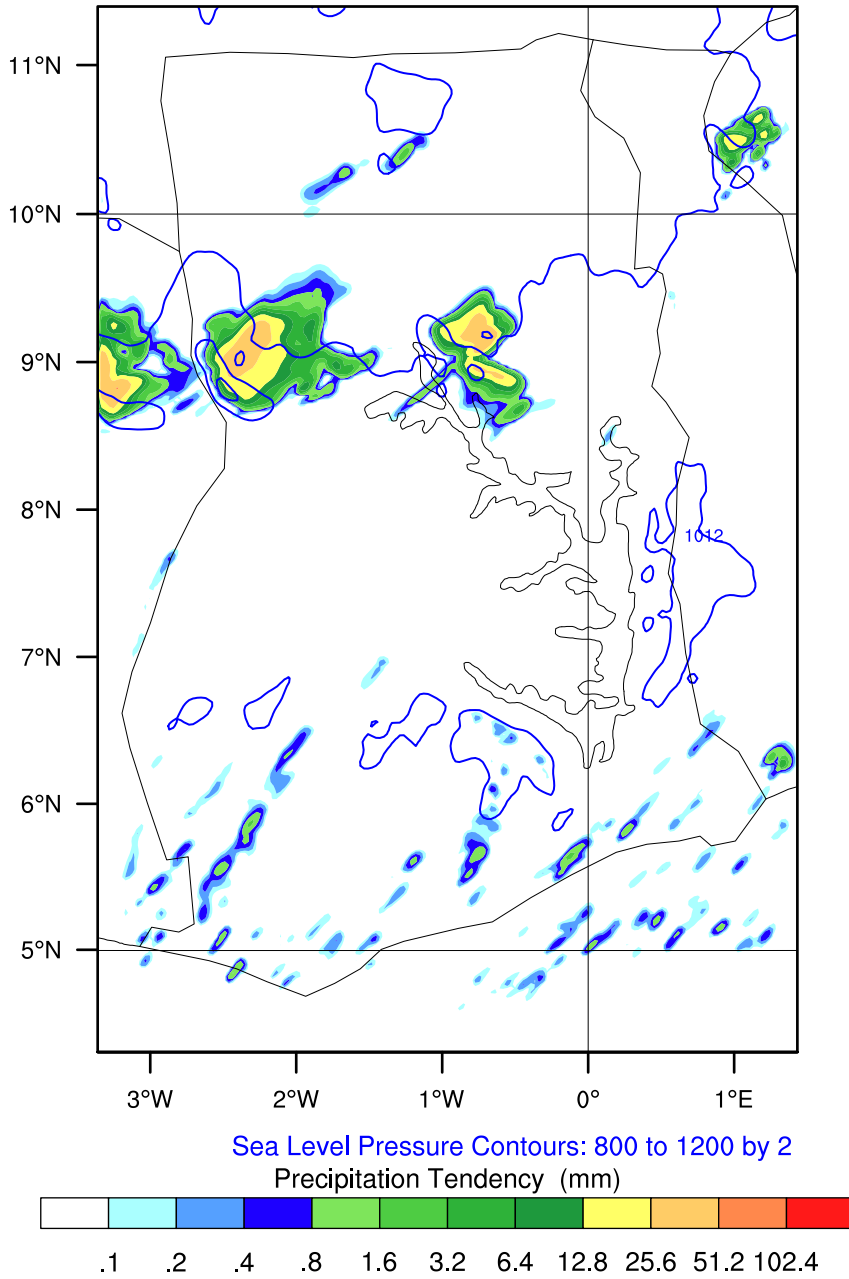


OUTPUT FROM WRF V4.6.1 MODEL
WE = 178 ; SN = 265 ; Levels = 40 ; Dis = 3km ; Phys Opt = 8 ; PBL Opt = 2 ; Cu Opt = 0

GMet (3DVar)

Init: 2026-06-19_06:00:00
Valid: 2026-06-20_02:00:15

Precipitation Tendency from 2026-06-20_01:00:10 to 2026-06-20_02:00:15 (mm)
Sea Level Pressure (hPa)

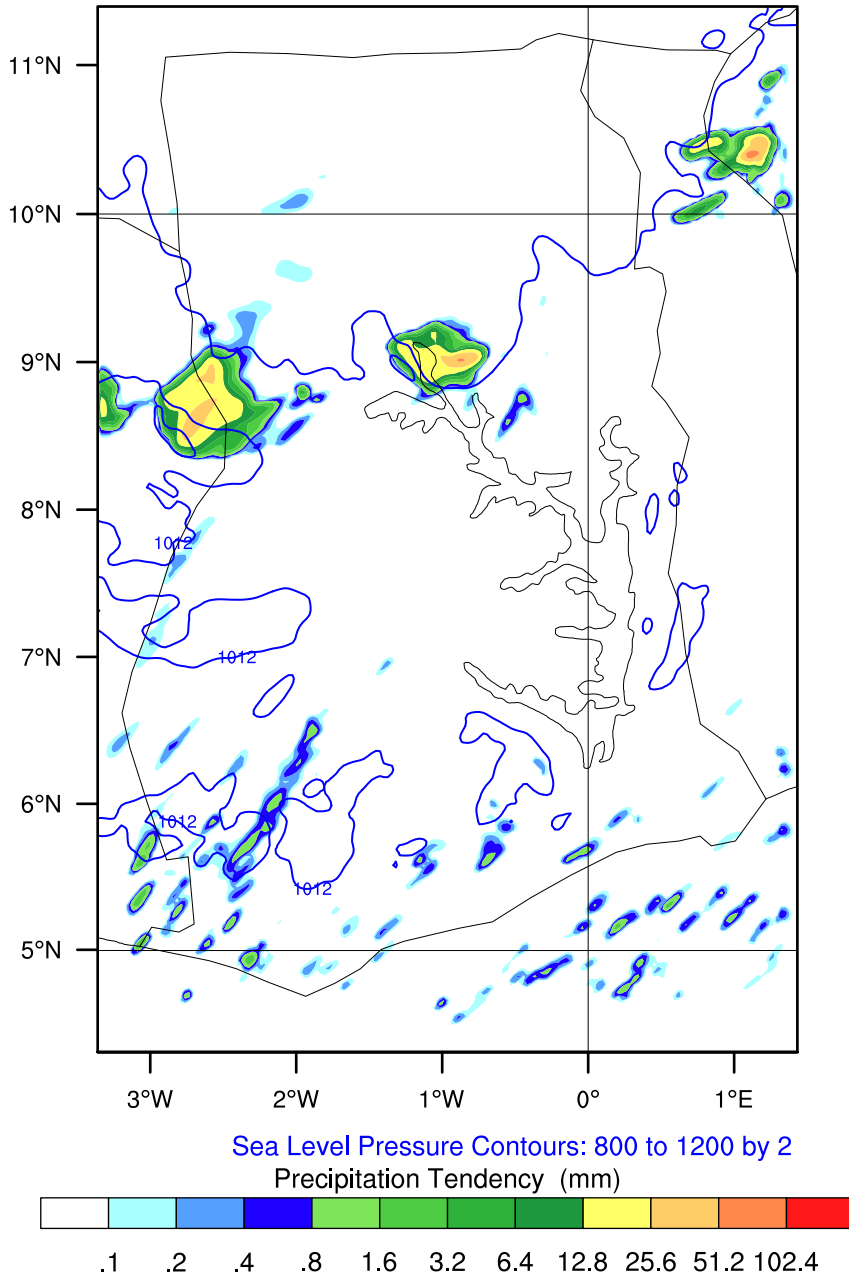


OUTPUT FROM WRF V4.6.1 MODEL
WE = 178 ; SN = 265 ; Levels = 40 ; Dis = 3km ; Phys Opt = 8 ; PBL Opt = 2 ; Cu Opt = 0

GMet (3DVar)

Init: 2026-06-19_06:00:00
Valid: 2026-06-20_03:00:14

Precipitation Tendency from 2026-06-20_02:00:15 to 2026-06-20_03:00:14 (mm)
Sea Level Pressure (hPa)

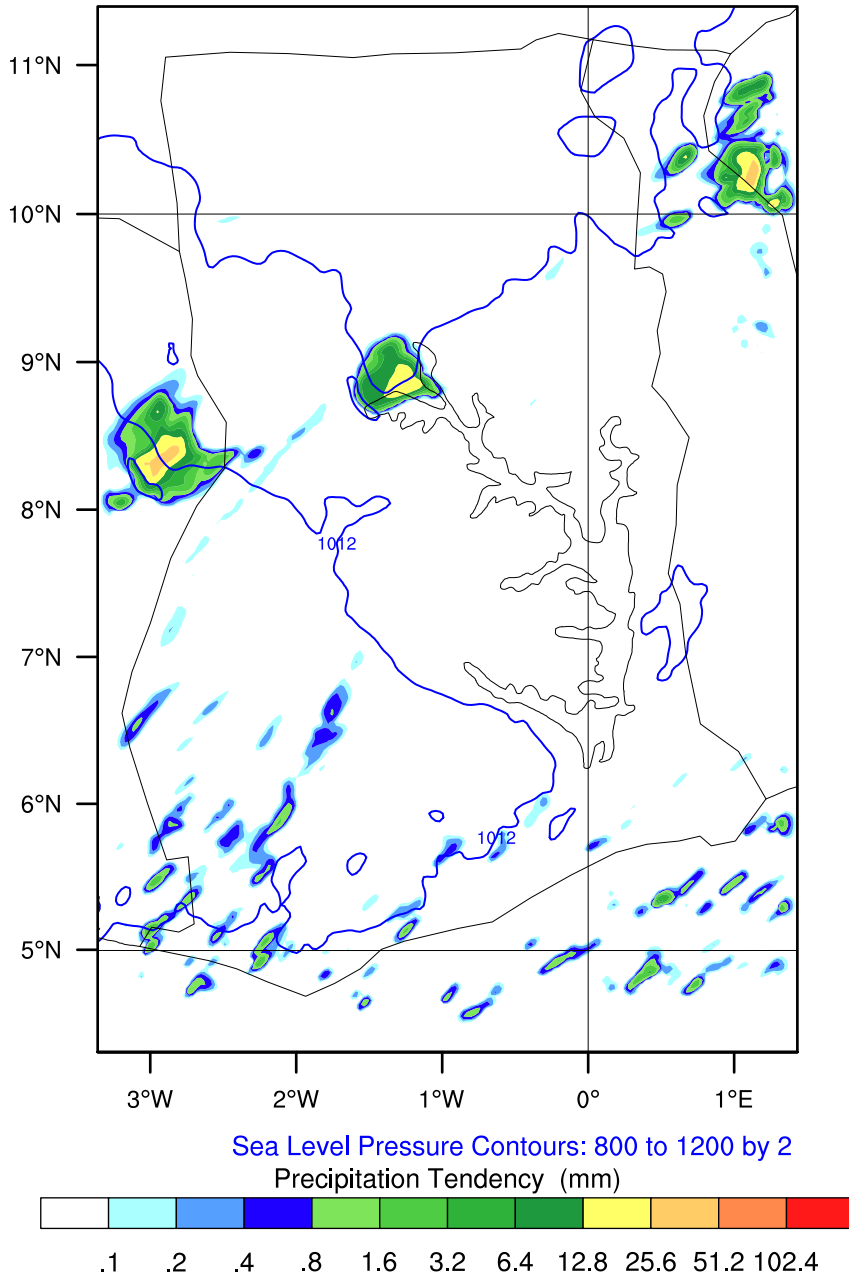


OUTPUT FROM WRF V4.6.1 MODEL
WE = 178 ; SN = 265 ; Levels = 40 ; Dis = 3km ; Phys Opt = 8 ; PBL Opt = 2 ; Cu Opt = 0

GMet (3DVar)

Init: 2026-06-19_06:00:00
Valid: 2026-06-20_04:00:04

Precipitation Tendency from 2026-06-20_03:00:14 to 2026-06-20_04:00:04 (mm)
Sea Level Pressure (hPa)

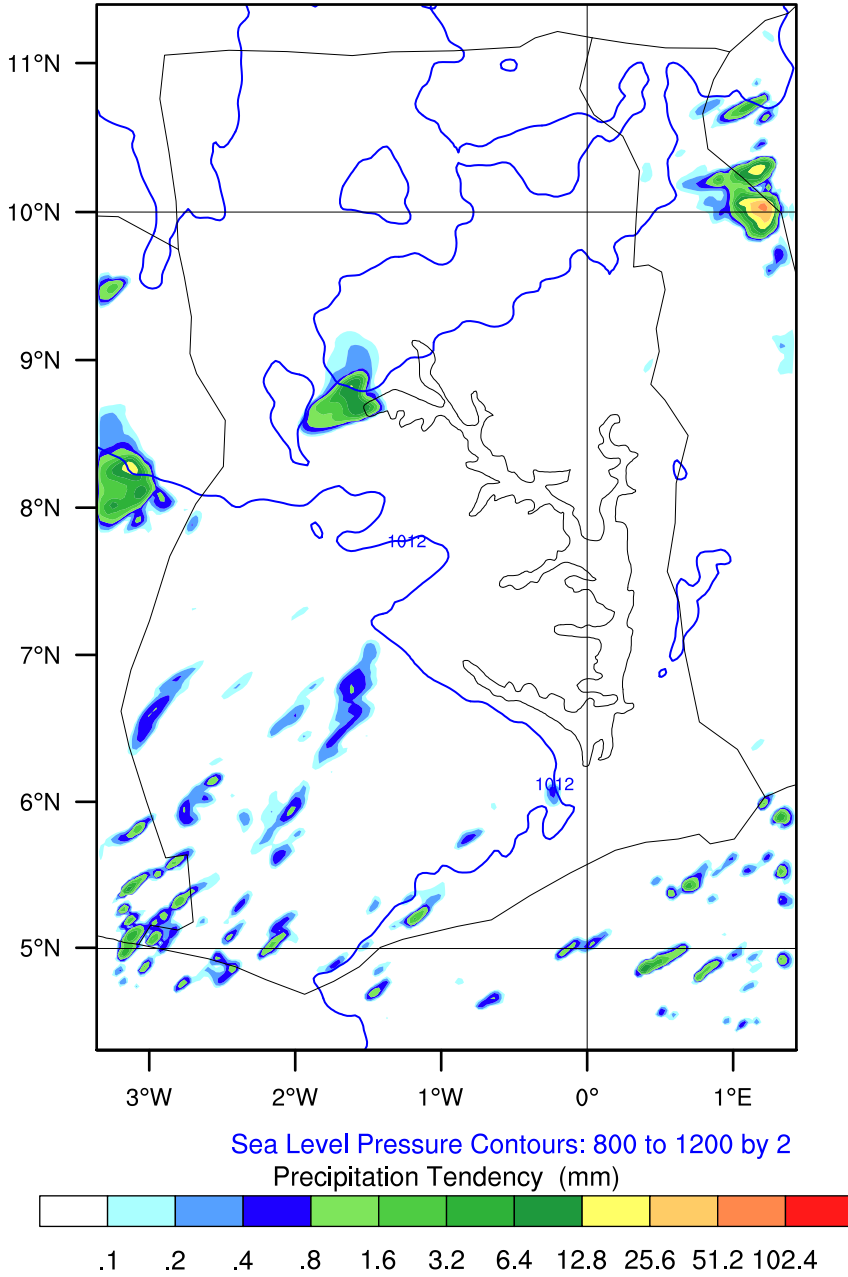


OUTPUT FROM WRF V4.6.1 MODEL
WE = 178 ; SN = 265 ; Levels = 40 ; Dis = 3km ; Phys Opt = 8 ; PBL Opt = 2 ; Cu Opt = 0

GMet (3DVar)

Init: 2026-06-19_06:00:00
Valid: 2026-06-20_05:00:01

Precipitation Tendency from 2026-06-20_04:00:04 to 2026-06-20_05:00:01 (mm)
Sea Level Pressure (hPa)

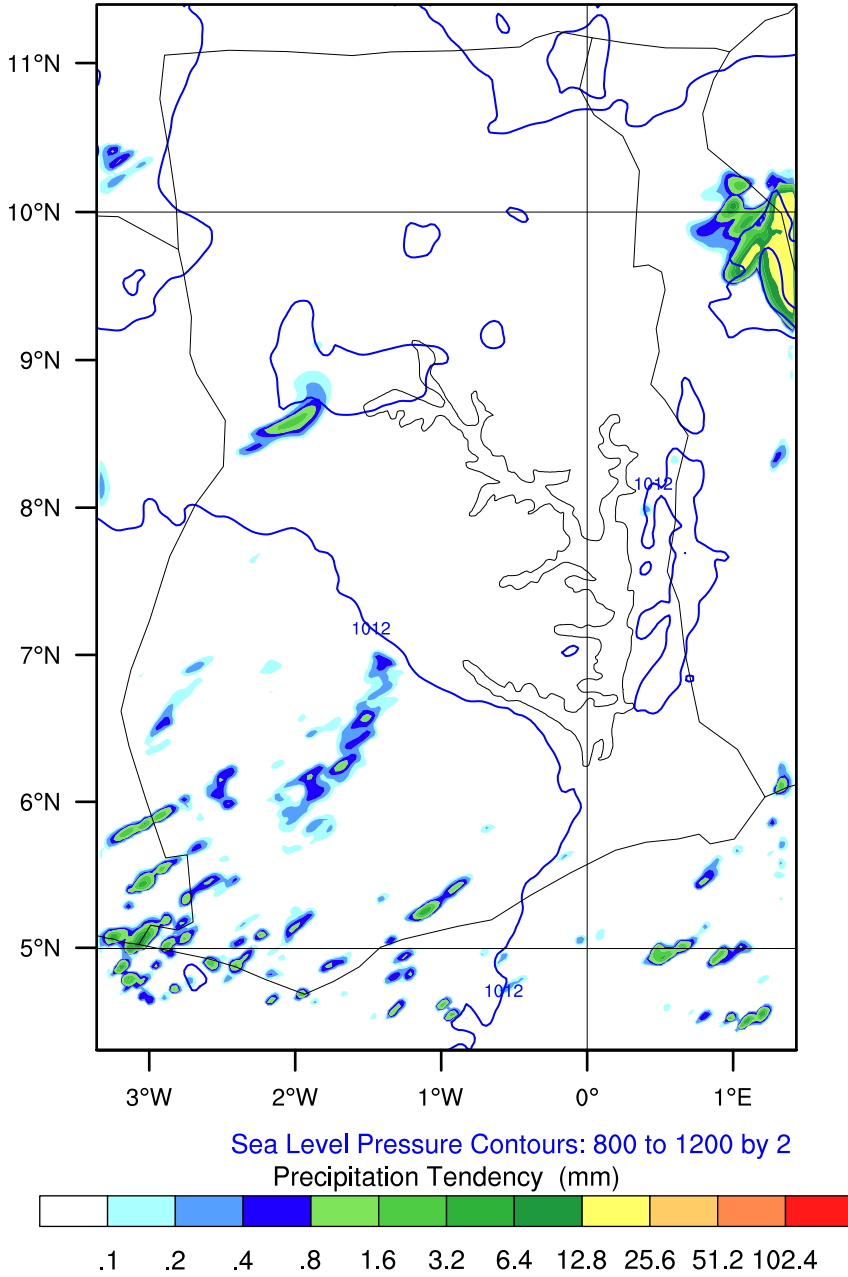


OUTPUT FROM WRF V4.6.1 MODEL
WE = 178 ; SN = 265 ; Levels = 40 ; Dis = 3km ; Phys Opt = 8 ; PBL Opt = 2 ; Cu Opt = 0

GMet (3DVar)

Init: 2026-06-19_06:00:00
Valid: 2026-06-20_06:00:00

Precipitation Tendency from 2026-06-20_05:00:01 to 2026-06-20_06:00:00 (mm)
Sea Level Pressure (hPa)

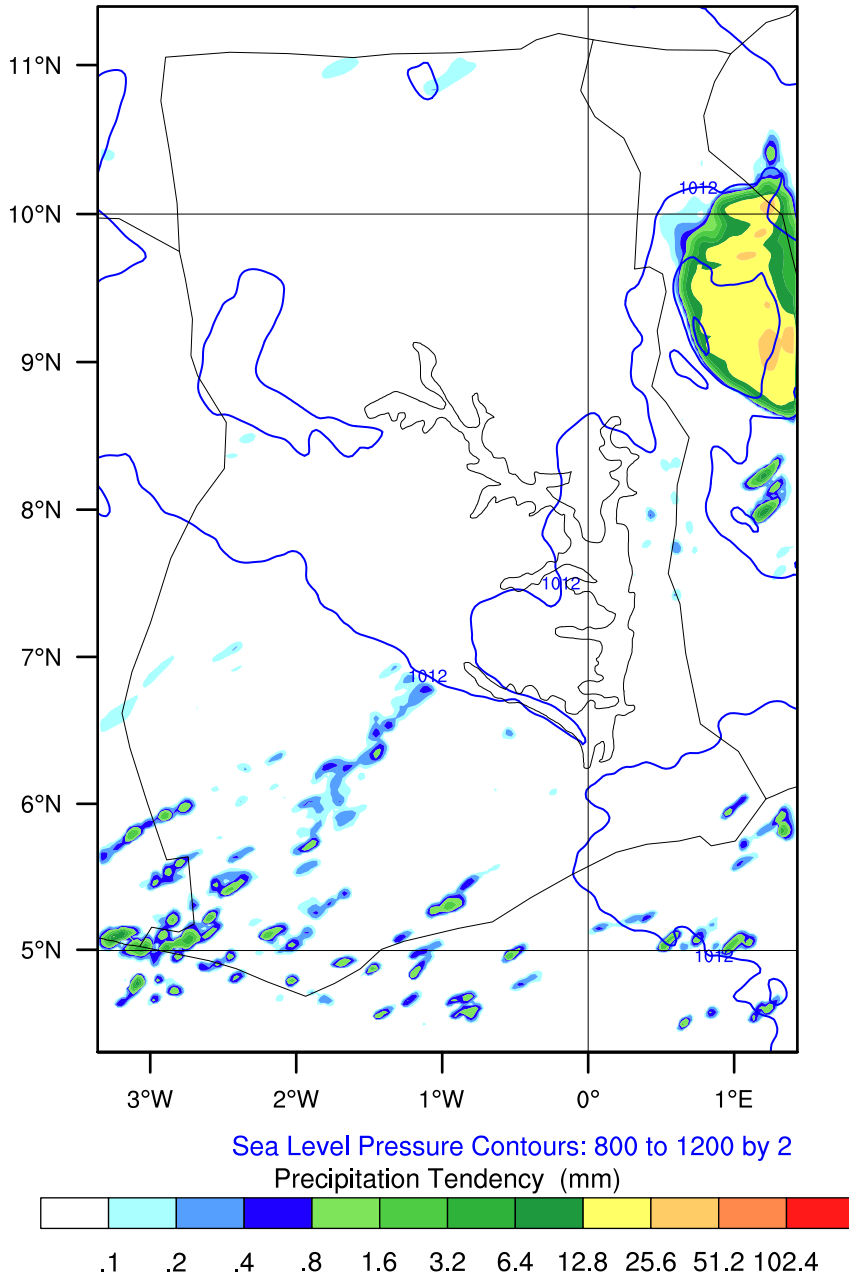


OUTPUT FROM WRF V4.6.1 MODEL
WE = 178 ; SN = 265 ; Levels = 40 ; Dis = 3km ; Phys Opt = 8 ; PBL Opt = 2 ; Cu Opt = 0

GMet (3DVar)

Init: 2026-06-19_06:00:00
Valid: 2026-06-20_07:00:00

Precipitation Tendency from 2026-06-20_06:00:00 to 2026-06-20_07:00:00 (mm)
Sea Level Pressure (hPa)

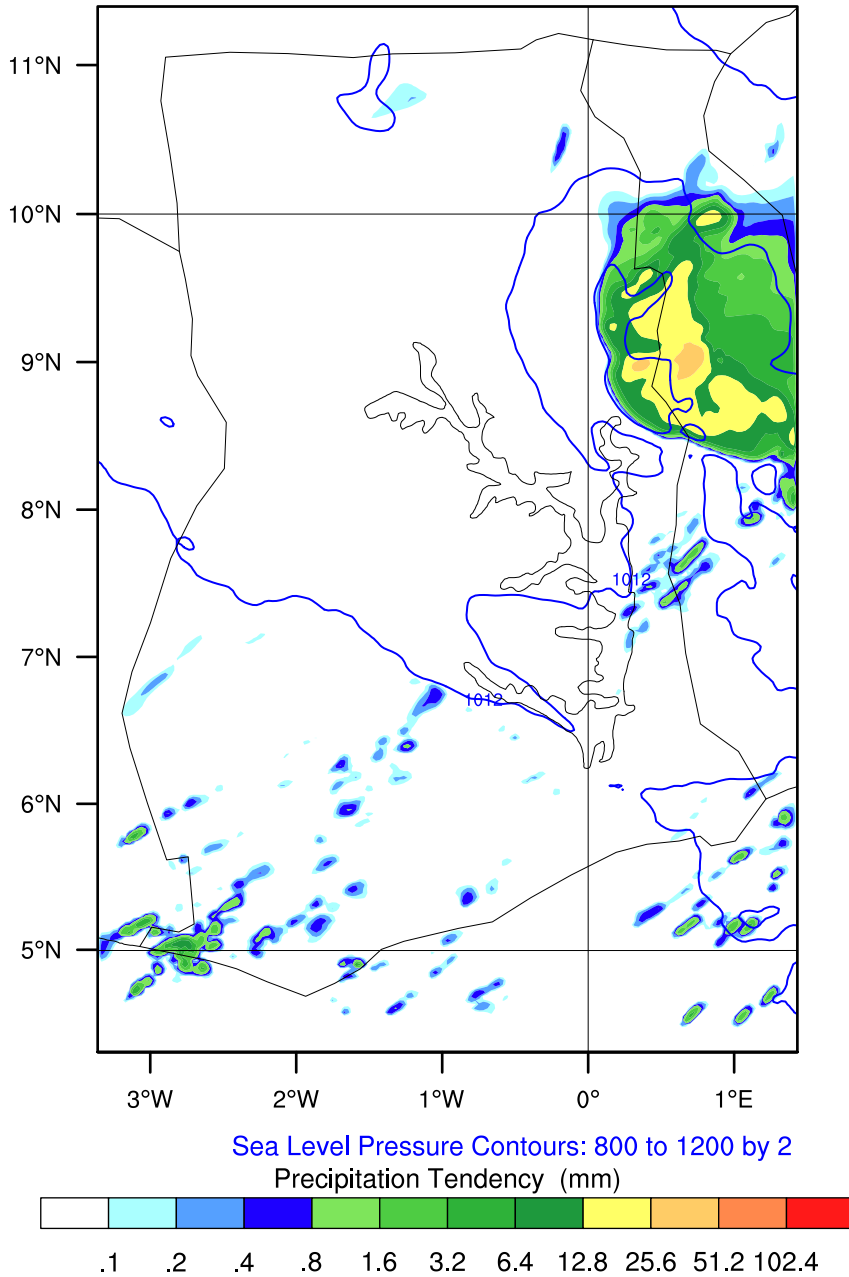


OUTPUT FROM WRF V4.6.1 MODEL
WE = 178 ; SN = 265 ; Levels = 40 ; Dis = 3km ; Phys Opt = 8 ; PBL Opt = 2 ; Cu Opt = 0

GMet (3DVar)

Init: 2026-06-19_06:00:00
Valid: 2026-06-20_08:00:10

Precipitation Tendency from 2026-06-20_07:00:00 to 2026-06-20_08:00:10 (mm)
Sea Level Pressure (hPa)

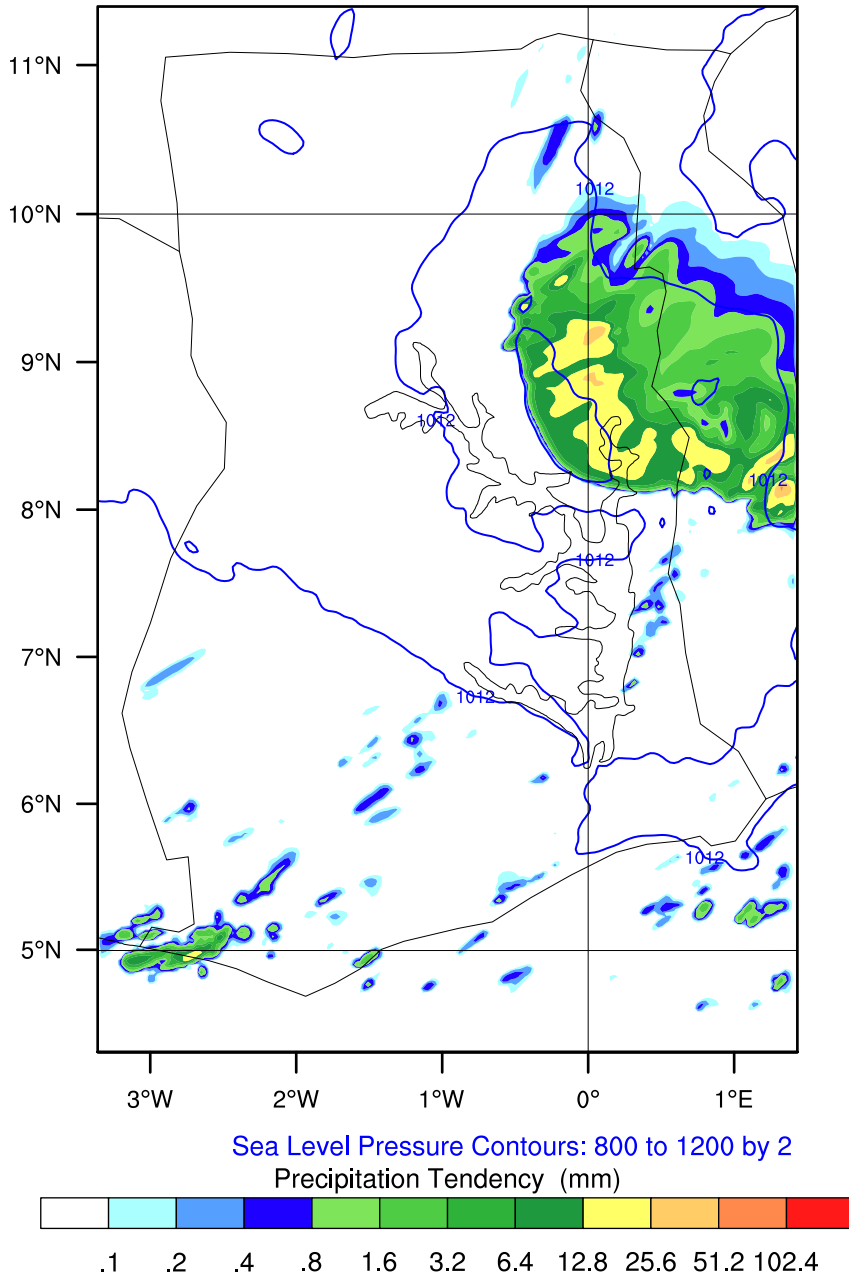


OUTPUT FROM WRF V4.6.1 MODEL
WE = 178 ; SN = 265 ; Levels = 40 ; Dis = 3km ; Phys Opt = 8 ; PBL Opt = 2 ; Cu Opt = 0

GMet (3DVar)

Init: 2026-06-19_06:00:00
Valid: 2026-06-20_09:00:10

Precipitation Tendency from 2026-06-20_08:00:10 to 2026-06-20_09:00:10 (mm)
Sea Level Pressure (hPa)

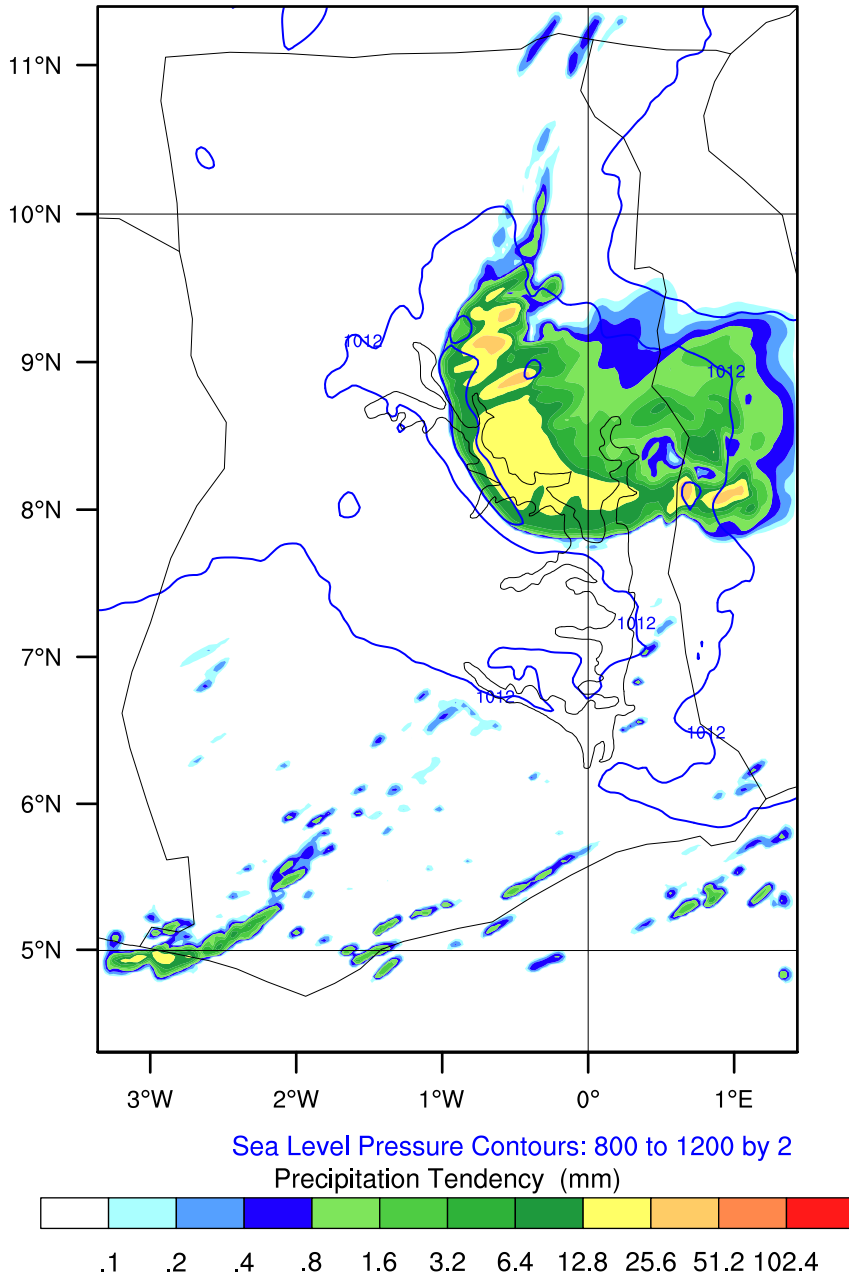


OUTPUT FROM WRF V4.6.1 MODEL
WE = 178 ; SN = 265 ; Levels = 40 ; Dis = 3km ; Phys Opt = 8 ; PBL Opt = 2 ; Cu Opt = 0

GMet (3DVar)

Init: 2026-06-19_06:00:00
Valid: 2026-06-20_10:00:10

Precipitation Tendency from 2026-06-20_09:00:10 to 2026-06-20_10:00:10 (mm)
Sea Level Pressure (hPa)

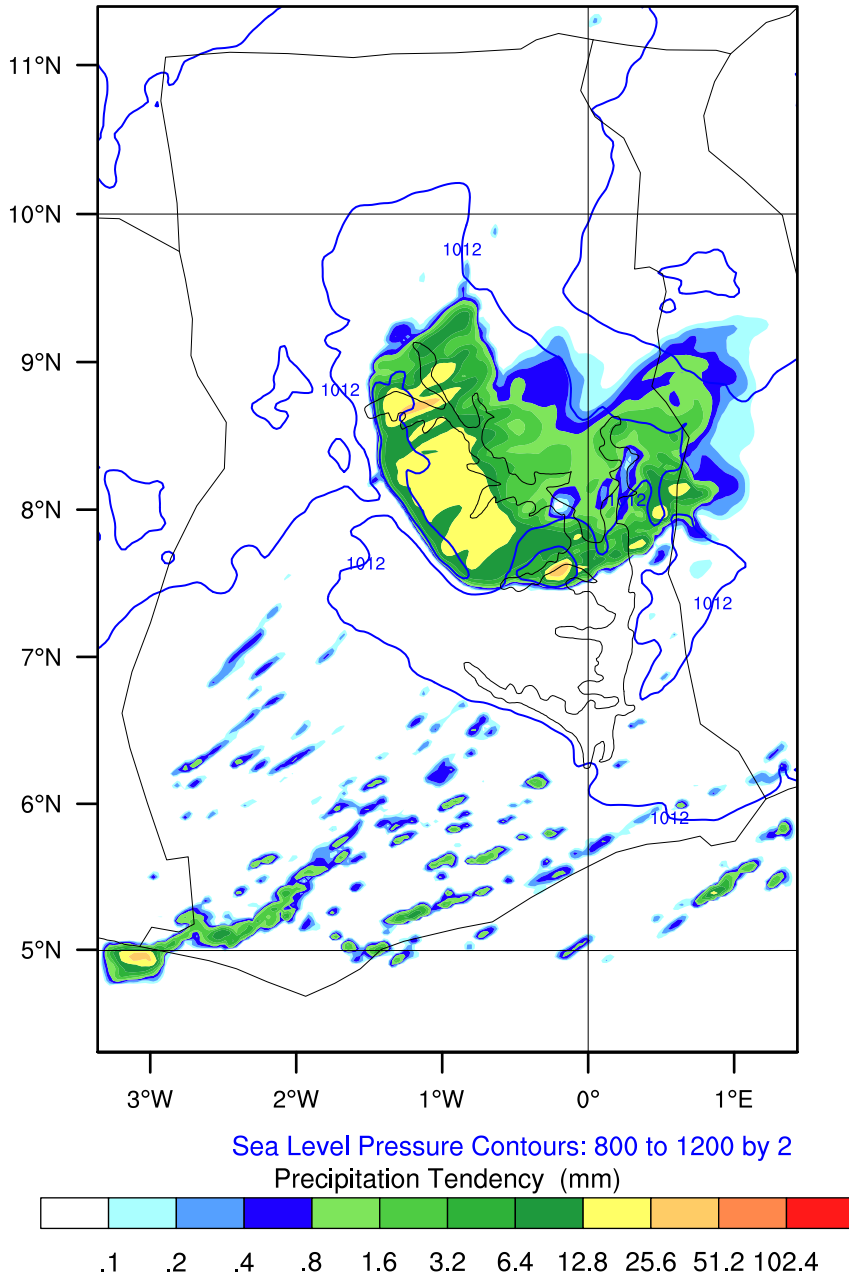


OUTPUT FROM WRF V4.6.1 MODEL
WE = 178 ; SN = 265 ; Levels = 40 ; Dis = 3km ; Phys Opt = 8 ; PBL Opt = 2 ; Cu Opt = 0

GMet (3DVar)

Init: 2026-06-19_06:00:00
Valid: 2026-06-20_11:00:10

Precipitation Tendency from 2026-06-20_10:00:10 to 2026-06-20_11:00:10 (mm)
Sea Level Pressure (hPa)

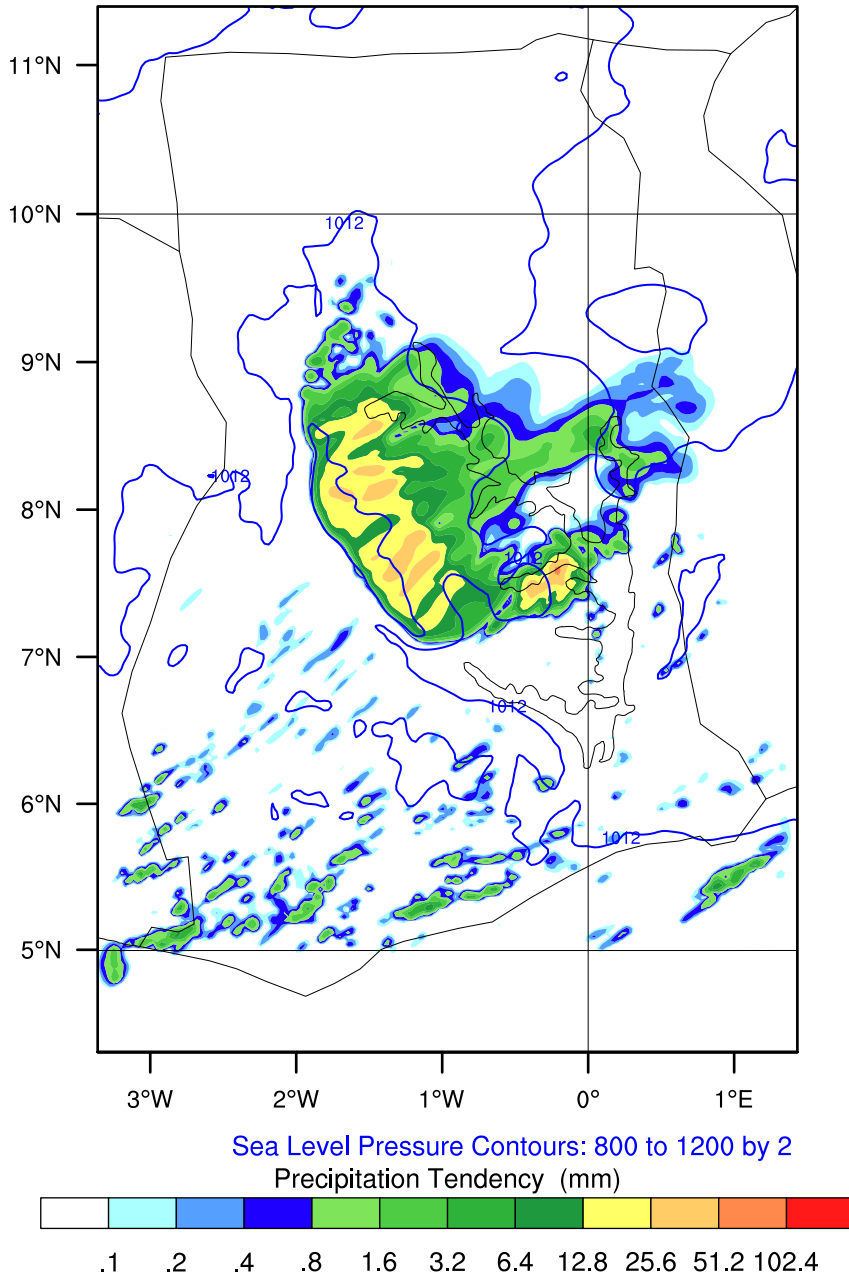


OUTPUT FROM WRF V4.6.1 MODEL
WE = 178 ; SN = 265 ; Levels = 40 ; Dis = 3km ; Phys Opt = 8 ; PBL Opt = 2 ; Cu Opt = 0

GMet (3DVar)

Init: 2026-06-19_06:00:00
Valid: 2026-06-20_12:00:00

Precipitation Tendency from 2026-06-20_11:00:10 to 2026-06-20_12:00:00 (mm)
Sea Level Pressure (hPa)



OUTPUT FROM WRF V4.6.1 MODEL
WE = 178 ; SN = 265 ; Levels = 40 ; Dis = 3km ; Phys Opt = 8 ; PBL Opt = 2 ; Cu Opt = 0