

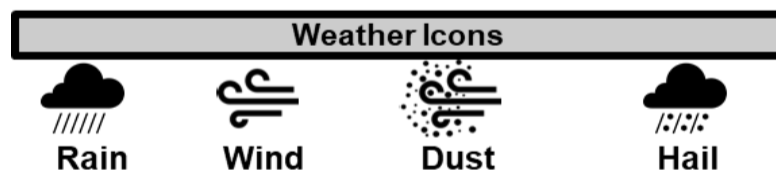
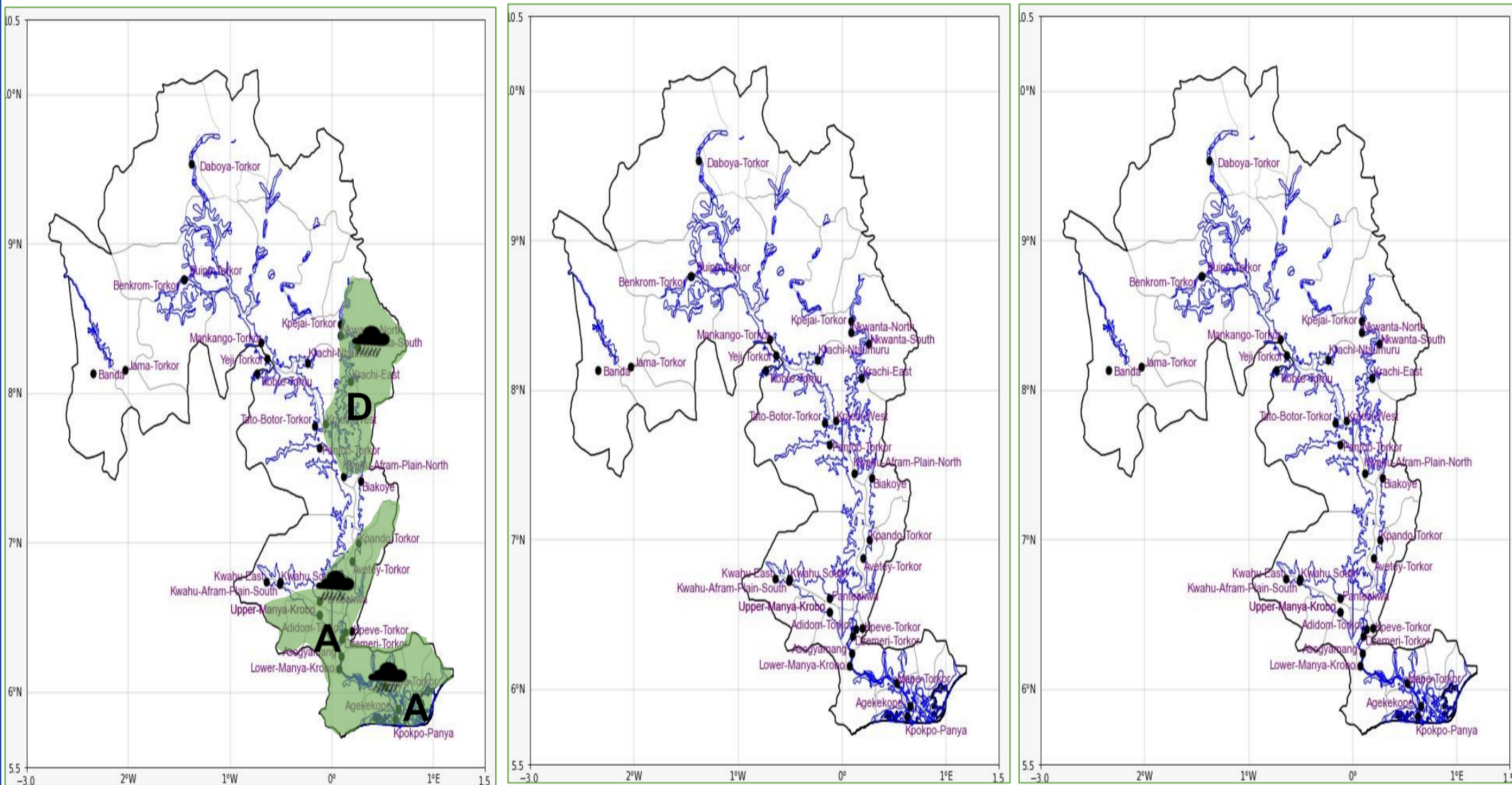


INLAND WATER IMPACT-BASED FORECAST

WEATHER SUMMARY

Mostly cloudy conditions are expected across the lake and its surrounding communities throughout the forecast period. However, there is a 30% chance of isolated, slight-to-moderate rain over the middle and southern portions of the lake and its environs this evening.

EVENING (06/07/2026)	MORNING (07/07/2026)	AFTERNOON (07/07/2026)
----------------------	----------------------	------------------------



Date
06/07/2026
Time Issued
4:00 PM
Valid From
06:00 PM
Nowcasting Risk
Take Action
Be aware
Low risk
No risk

Likelihood ↑	Weather Forecast Risk Table			
	High (>60%)	G	H	I
	Medium (40%-60%)	D	E	F
Low (<40%)	A	B	C	
		Low	Medium	High
		Impact →		

Time	Surface Wind	Visibility	Temperature
12 hours	S/SW 05 Max 20 kt	(4 – 9) km	(21 – 29) °C
24 hours	S/SW 05 Max 20 kt	(4 – 10) km	(21 – 31) °C