

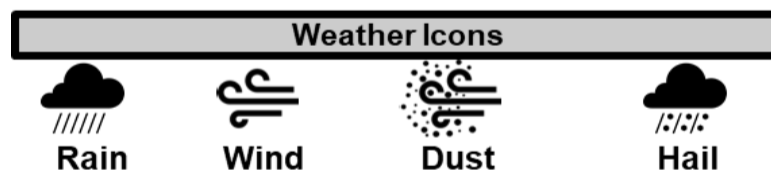
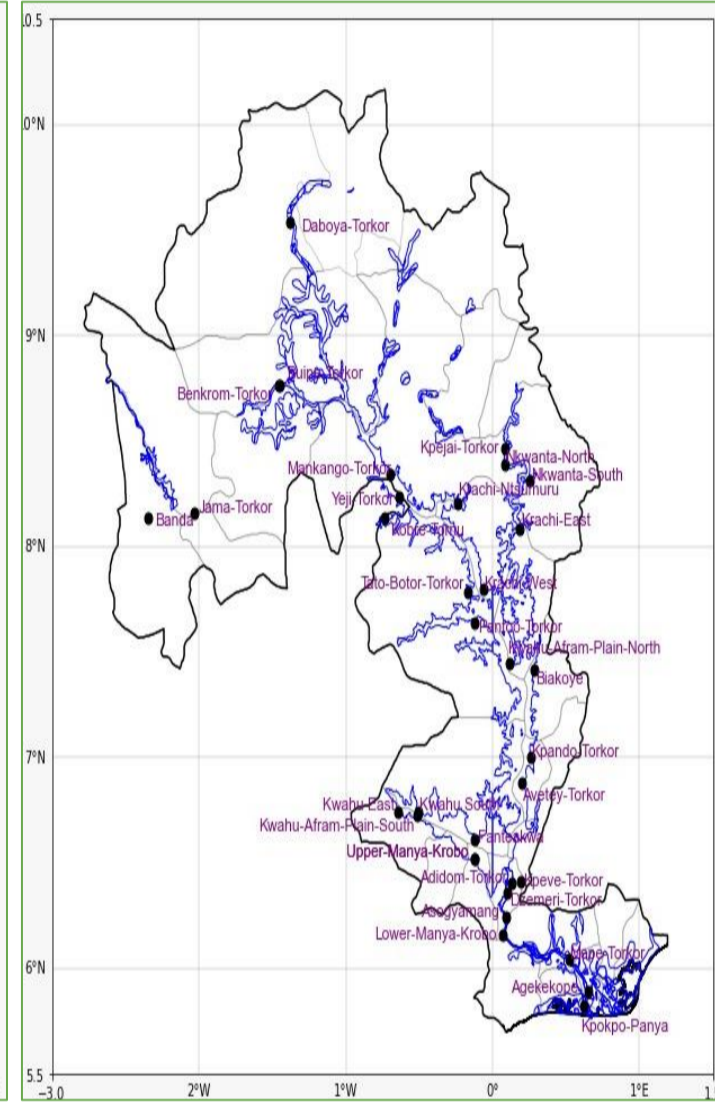
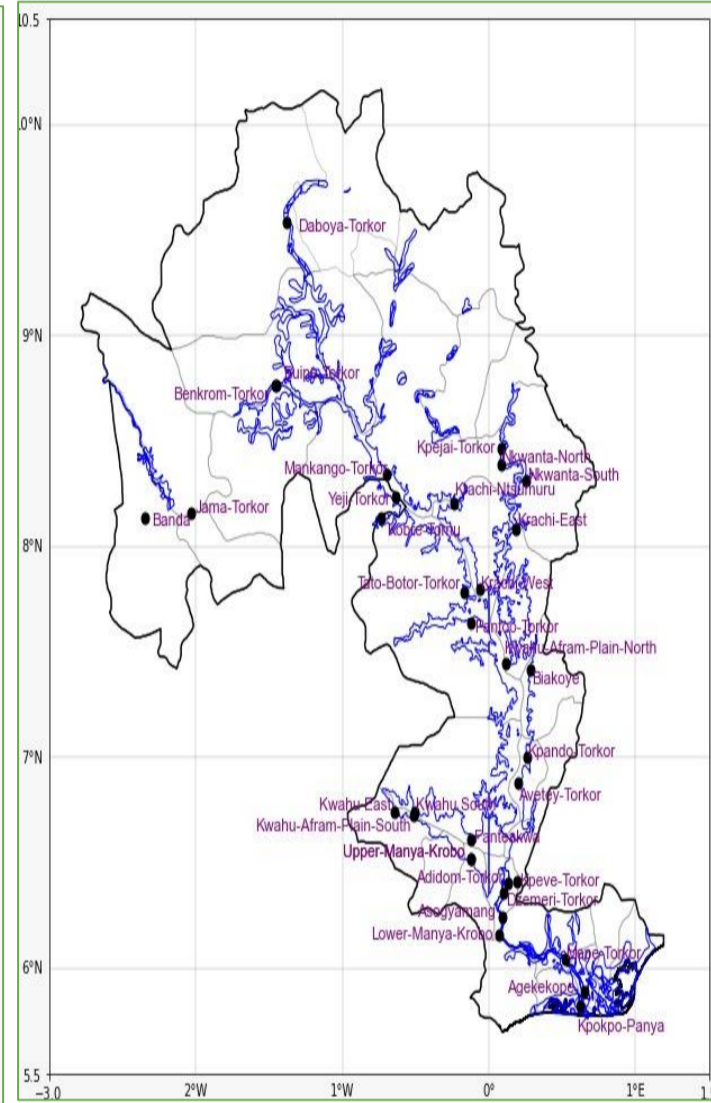
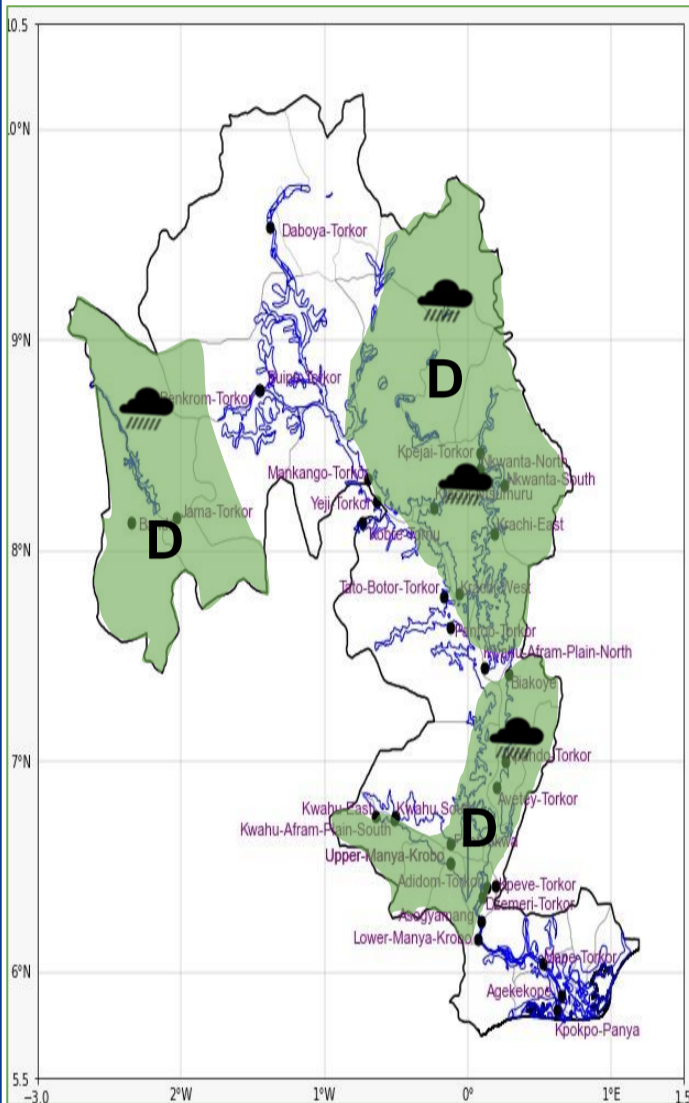


INLAND WATER IMPACT-BASED FORECAST

WEATHER SUMMARY

The lake is expected to experience clouds interspersed with sunny periods, with a 40% likelihood of isolated light-to-moderate rain across the lake and its environs from late afternoon into the evening.

AFTERNOON (07/07/2026)	EVENING (07/07/2026)	MORNING (08/07/2026)
------------------------	----------------------	----------------------



Date
07/07/2026
Time Issued
10:30 PM
Valid From
12:00 PM
Nowcasting Risk
Take Action
Be aware
Low risk
No risk

Likelihood ↑	Weather Forecast Risk Table			
	High (>60%)	G	H	I
	Medium (40%-60%)	D	E	F
	Low (<40%)	A	B	C
	Low	Medium	High	
	<p>Impact</p>			

Time	Surface Wind	Visibility	Temperature
12 hours	S/SW 05 Max 19 kt	(3 – 10) km	(24 – 32) °C
24 hours	S/SW 05 Max 18 kt	(3 – 10) km	(22 – 32) °C