

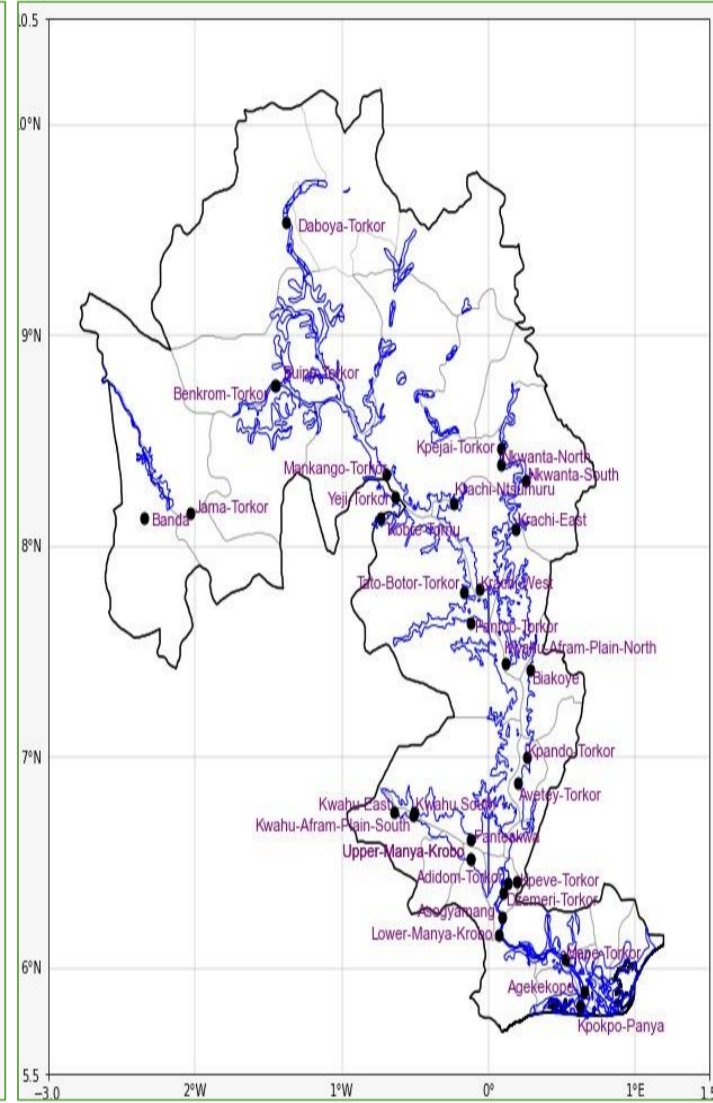
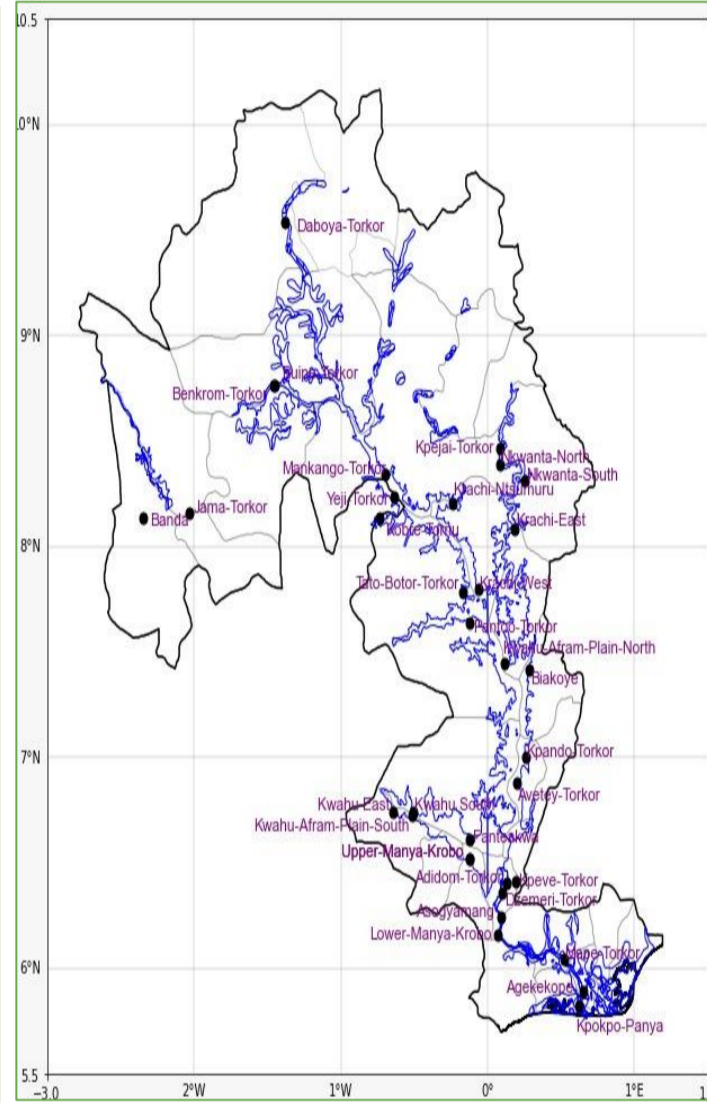
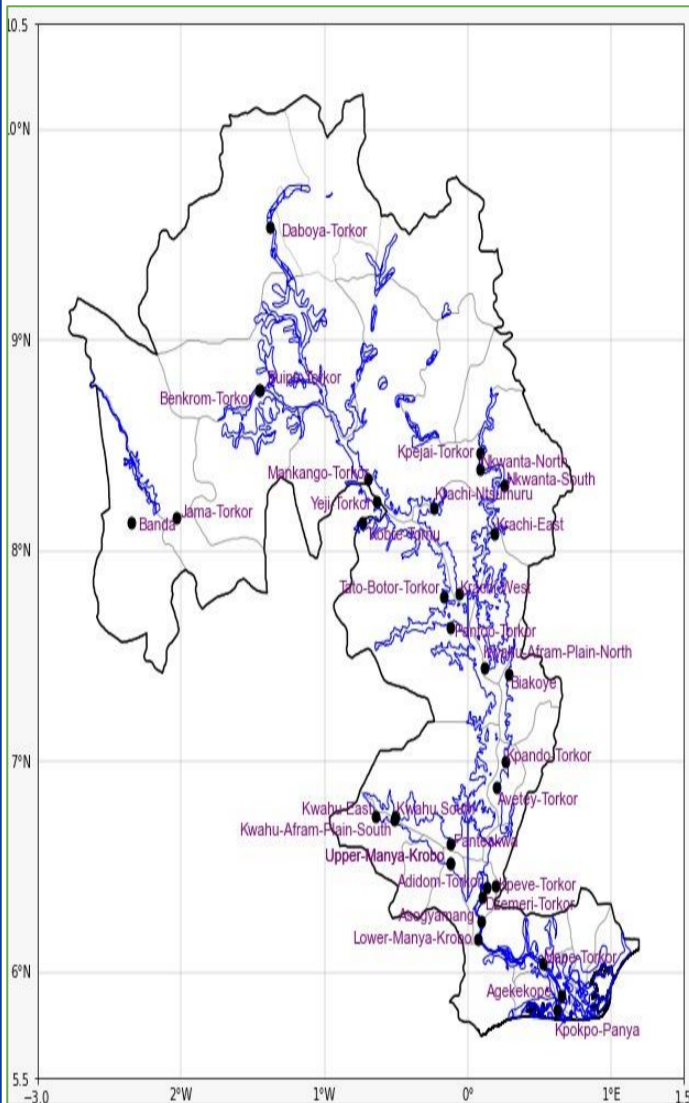


## INLAND WATER IMPACT-BASED FORECAST

### WEATHER SUMMARY

The lake and its environs are expected to be mostly cloudy throughout the forecast period. However, visibility is expected to reduce in the early hours of the morning due to misty conditions over the vegetative and hilly zones across the lake and its environs.

EVENING (07/07/2026)	MORNING (08/07/2026)	AFTERNOON (08/07/2026)
----------------------	----------------------	------------------------



**Weather Icons**

Rain

Wind

Dust

Hail

Date
07/07/2026
Time Issued
4:00 PM
Valid From
06:00 PM
Nowcasting Risk
Take Action
Be aware
Low risk
No risk

Likelihood	Weather Forecast Risk Table			
	High (>60%)	G	H	I
	Medium (40%-60%)	D	E	F
Low (<40%)	A	B	C	
	Low	Medium	High	
	<p>Impact</p>			

Time	Surface Wind	Visibility	Temperature
12 hours	S/SW 05 Max 20 kt	(4 – 9) km	(23– 33) °C
24 hours	S/SW 05 Max 20 kt	(4 – 10) km	(21 – 31) °C