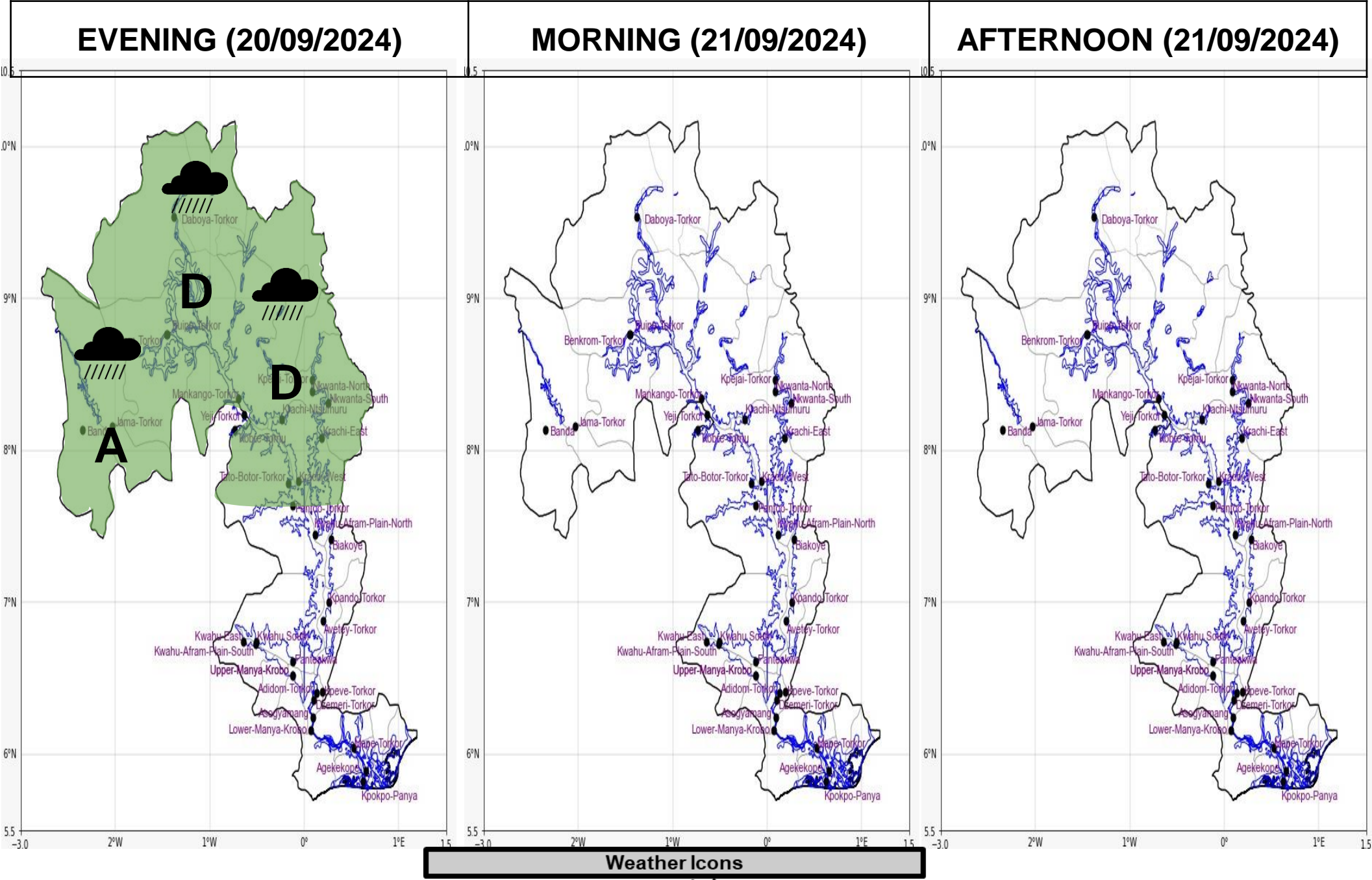


INLAND WATER IMPACT-BASED FORECAST

WEATHER SUMMARY

The lake and its surrounding communities are likely to observe variably cloudy weather conditions this evening. However, the cloudiness is expected to produce intermittent light to moderate rains over the northern and middle sectors between this evening and the morning hours.



Date
20/09/2024
Time Issued
04:00 PM
Valid From
06:00 PM
Nowcasting Risk
Take Action
Be aware
Low risk
No risk

Weather Forecast Risk Table			
Likelihood ↑	High (>60%)	G	H
	Medium (40%-60%)	D	E
	Low (<40%)	A	B
		Low	Medium
		High	
		Impact →	

Time	Surface Wind	Visibility	Temperature
24 hours	SW 05 Max 15 kt	(5 – 10) km	(21 – 30) °C
48 hours	S/SW 05 Max 18 kt	(5 – 10) km	(21 – 31) °C