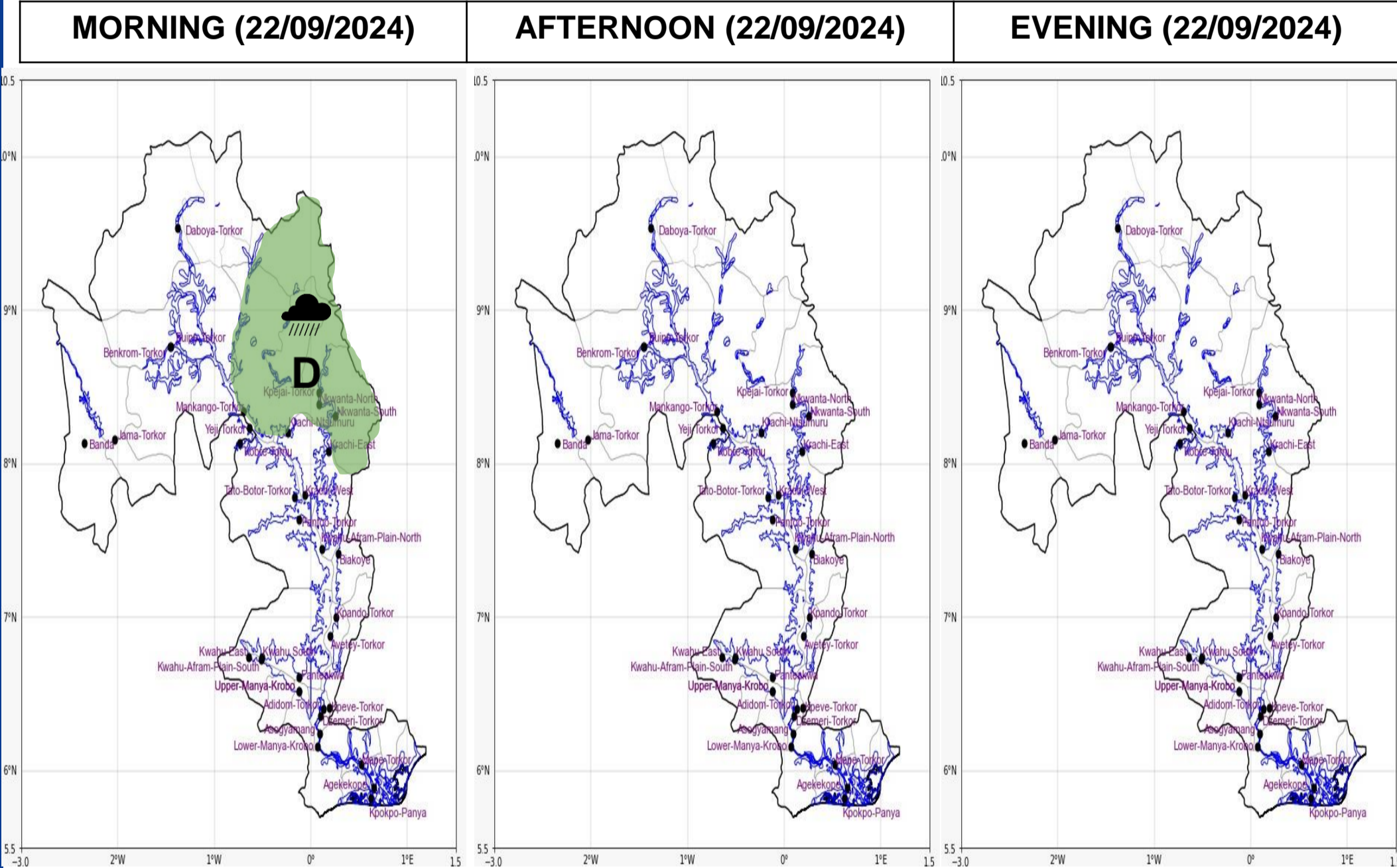




INLAND WATER IMPACT-BASED FORECAST  
WEATHER SUMMARY

The lake and its environs are expected to see a combination of cloudy and partly cloudy weather, with early morning fog over the mountainous areas. Nonetheless, there is a 40% probability of isolated mild to moderate rain across the middle sector in the morning.



Date
22/09/2024
Time Issued
4:00 AM
Valid From
6:00 AM
Nowcasting Risk
Take Action
Be aware
Low risk
No risk

Likelihood	Weather Forecast Risk Table		
	High (>60%)	G	H
	Medium (40%-60%)	D	E
	Low (<40%)	A	B
	Low	Medium	High
	Impact		

Time	Surface Wind	Visibility	Temperature
24 hours	W/SW 05 Max 17 kt	(4 – 9) km	(21– 30) °C
48 hours	SW 05 Max 18kt	(5 – 10) km	(22 – 31) °C