

Revisiting the agro-climatic zones of Ghana: A re-classification in conformity with climate change and variability

Edmund I. Yamba, Jeffrey N. A. Aryee, Emmanuel Quansah, Patrick Davies, Cosmos S. Wemegah, Marian A. Osei, Maureen A. Ahiataku, Leonard K. Amekudzi

Published: January 11, 2023 • <https://doi.org/10.1371/journal.pclm.0000023>

Abstract

The Ghana Meteorological Agency delineated Ghana's geographical space into four agro-climatic zones namely the north, transition, forest and coastal zones. Since the demarcation in the 1960s, previous studies have rarely provided a more disaggregated agro-climatic zone map in tandem with contemporary climate change and variability. The continued use of this age-old classified zones is a disservice to the public. In this study, therefore, we evaluated the existing agro-climatic zone map of Ghana and reconstructed it to a more appropriate and disaggregated map that reflect current climate change and variability impact. This was achieved by quantifying the contrast in rainfall and temperature amount over a 30 year period for different climate windows and mapped out areas with similar rainfall and temperature regimes. Our findings revealed significant changes in the existing agro-climatic zones especially in terms of number, the boundary size and geographical orientation of the zones. The newly proposed map consist of five distinctive climate zones namely: the Sudan Savannah, Guinea Savannah, Transition, Forest and Coastal zones. The Sudan and Guinea Savannah zones showed a southerly expansion. The transition zone shriveled in size as the Guinea Savannah zone took over most of it, notably in the southeast. The forest zone shrank in size with a northwest shift while the coastal belt grew to encompass the whole coast of Ghana. These changes are strong evidence of climate change and possible food production changes. These findings are useful to agriculture sector in planning their activities, the health sector in predicting specific diseases caused by changes in weather and climate, Ghana Meteorological Agency for weather forecasting purposes, and the National Disaster Management in identifying disaster prone zones.

Citation: Yamba EI, Aryee JNA, Quansah E, Davies P, Wemegah CS, Osei MA, et al. (2023) Revisiting the agro-climatic zones of Ghana: A re-classification in conformity with climate change and variability. PLOS Clim 2(1): e0000023. <https://doi.org/10.1371/journal.pclm.0000023>

Editor: Terence Epule Epule, Mohammed VI Polytechnic University/UM6P, MOROCCO

Received: September 2, 2021; **Accepted:** October 25, 2022; **Published:** January 11, 2023

Copyright: © 2023 Yamba et al. This is an open access article distributed under the terms of the [Creative Commons Attribution License](#), which permits unrestricted use, distribution, and reproduction in any medium, provided the original author and source are credited.

Data Availability: All data used to produce the figures are uploaded as [Supporting information files](#). The GPCC, CHIRPS and ERA5 data are publicly available in repositories as cited in the paper. Request for the Ghana Meteorological Agency (GMet) data can be made via the link: <https://www.meteo.gov.gh/gmet/contact-us/>. Email request can also be made at: info@meteo.gov.gh or client@meteo.gov.gh.

Funding: The authors received no specific funding for this work.

Competing interests: The authors declare that they have no competing interest.

Introduction

Agro-Climatic Zones (ACZs) are geographical areas characterized by homogeneity in meteorological factors or climatic conditions that have significant impact on crop development and yield [1]. Climate characteristics such as temperature, humidity, amount and type of precipitation, and the passage of seasons within a certain area are commonly used to characterise ACZs [1, 2]. Among these parameters, temperature and precipitation are most commonly used for ACZs delineation [3]. This is because, some locations can have a significant wider minimum and maximum range than others. In the same vein, some locations can have roughly the same amount of rainfall throughout the year, while others may experience very little rainfall for part of the year and a lot of rainfall for the rest of the year. Changes in temperature and rainfall of an area can have a big impact on plants and animals that live in that area. Information about ACZs can, therefore, help experts track changes that occur within a zone due to climate change or global warming. It can also help identify areas with different crop and animal production potentials according to environmental circumstances [1, 4]. Knowing which plants flourish in particular climates can assist farmers in determining which plants will thrive on their own and which will require assistance [3, 5].

The Ghana Meteorological Agency (GMet) divided Ghana's geographical space into four ACZs namely: the North, Transition, Forest, and Coastal zones. This classification was carried out for purposes of weather forecasting and application of agricultural information. This zonation has been in use since the 1960s without reference to contemporary climate change and variability. The continued usage of this age-old classification indicates that Ghana's climate is stable. However, there are mounting evidence from previous research [6, 7] suggesting that climate variables such as temperature and rainfall have changed with time in Ghana. For instance, Amekudzi et. al. [8] used rain gauge data to analyze the variations in the onset, cessation and length of the rainy season across Ghana's agro-ecological zones and found evidence of significant heterogeneity in the rainfall onset and cessation dates across the country. Badu et. al. [9] employed wavelet analysis to assess the long-term spatio-temporal rainfall variability over Ghana and discovered a significant declining trend in seasonal rainfall, implying a major effect from both climate change and anthropogenic activities. Increased temperatures, late commencement and early termination of the rainfall season, and certain severe mid-season droughts have also been corroborated in research studies [10–15] addressing farmers' observations of climate change and variability in Ghana.

To our knowledge, previous studies that have reviewed the existing Ghana's ACZs and re-classified the zones in tandem with contemporary climate change and variability are extremely rare. Recently, Bessah et al. [16] classified Ghana's climate zones into three namely: Savannah, forest and coastal zones using rainfall, relative humidity, maximum and minimum temperature records from 1976 to 2018. Unfortunately, a fundamental weakness in this study is that their classification relied solely on point data from a very coarse station network across the country, with no high-quality gridded dataset used for spatial classification to determine the actual demarcations of the climate clusters. Furthermore, their data did not span multiple climate periods, which could have allowed them to draw additional conclusions about the climate clusters. Aryee et. al. [17] defined ACZs of Ghana using annual mean rainfall data and a k-means clustering technique. However, using annual mean rainfall for ACZ categorization, as was the case of GMet in constructing the existing ACZ map, has the disadvantage of not accounting for seasonal rainfall contrast and dry spells. Furthermore, using annual mean rainfall can mask large areas together as having similar features without taking into account local variability.

Given that previous studies have rarely provided a more dis-aggregated ACZ map of Ghana and that evidence of climatic changes in Ghana combined with population expansion and increased human activity [18] could have impact on existing ACZs, there is a need to revise this age-old ACZ map of Ghana to reflect current climate change and variability. Continuing to use ACZ classifications that are out of step with contemporary climate change and variability is a disservice to the public.

The main objective of this study, therefore, is to re-evaluate the existing ACZ map of Ghana and reconstruct a more appropriate and dis-aggregated map in tandem with climate change and variability. To define the climate regime of an area, at least 30 years of data corresponding with recommended World Meteorological Organization's (WMO) base years for climate analysis are required [19]. Hence, using monthly rainfall and temperature data spanning 30 years, we quantified the contrast in their seasonal amount across the country, characterized their distribution and classified Ghana's climate regimes. Unlike previous studies, the current work considered the classification at a micro-scale level using quality temperature and rainfall data from highly dense ground-based station networks across the country as well as from highly resolved grid-spaced satellite-gauge and reanalysis products. Our findings are intended to give information useful for agricultural practices, disease control, water resource management, socio-economic activities and food security in Ghana.

Materials and methods

Study area

Ghana, the study area, is a West African country with geographical boundaries between latitudes 4.5°N and 11.5°N and longitude 3.5°W and 1.5°E (see Fig.1). It is bordered on the north by Burkina Faso, on the east by Togo, on the west by Côte d'Ivoire, and on the south by the Gulf of Guinea. The country has a tropical monsoon climate with agricultural land accounting for about 65 percent of the overall land area [18, 20]. Rainfall in Ghana is governed by the West African Monsoon (WAM), a pressure system driven by the energy and temperature gradient between the Gulf of Guinea and the Sahara [8]. This pressure system is modulated by the Inter-Tropical Discontinuity (ITD) [21, 22]. The ITD oscillates between the north and south of Ghana, resulting in a bi-modal and uni-modal rainfall distribution [17]. The northern Ghana is characterized by uni-modal rainfall distribution which starts from April through mid-October with peak rainfall in August or September. The south of Ghana has a bi-modal rainfall distribution. The first season runs from March to July, with peak in June, while the second season runs from September to mid-November, with peak in October. Other factors influencing the country's rainfall pattern include local convective activity, sea surface temperature, and atmospheric dynamic stability [9]. Between December and February, the harmattan, a north-easterly desert wind, dominates the country. The harmattan winds are more prevalent in the north, lowering humidity and resulting in hotter days and cooler nights in this area of the country.

<https://doi.org/10.1371/journal.pclm.0000023.t001>

Data analysis

We applied a simple rainfall Seasonality Index (SI) developed by Walsh and Lawler [29] to the monthly rainfall data (from GPCC and ground-based weather stations) and quantified the contrast in seasonal rainfall amount year by year for different climate windows: 1921–1950, 1951–1980 and 1981–2010 using Eq 1. The climatological mean of SI_i , \overline{SI} , for each climate period was then computed using Eq 2.

$$SI_i = \frac{1}{R_i} \sum_{n=1}^{n=12} |X_{in} - \frac{R_i}{12}| \quad (1)$$

where R_i is the total annual rainfall for a particular year i and X_{in} is the actual monthly rainfall for month n of the respective year i .

$$\overline{SI} = \frac{1}{N} \sum_{i=1}^{i=N} SI_{ij} \quad (2)$$

where N is the number of years for each climate window, at least 30 years, and corresponded with the WMO base years for climate analysis. Higher values of \overline{SI} indicate a great overall departure from an equal distribution of rainfall throughout the year and near zero values suggest that there is little or no seasonal variation in precipitation [29]. The class limits of \overline{SI} and their representative rainfall regimes are shown in Table 2. Locations with similar \overline{SI} estimates were then mapped out as areas with similar rainfall regimes. The SI is key in this case because it classifies the type of climate in relation to water availability. The higher the SI values of a region, the greater the water resources variability and scarcity in time and the more vulnerable the area is to desertification [19, 30].

SI Class Limit	Defined Rainfall Regime
≤ 0.19	Rainfall spread throughout the year
$0.20-0.39$	Rainfall spread throughout the year but with a definite wetter season
$0.40-0.59$	Rainfall is seasonal with a short dry season
$0.60-0.79$	Rainfall is seasonal
$0.8-0.99$	Rainfall is markedly seasonal with a long-drier season
≥ 1.00	Most rainfall in 3 months or less

<https://doi.org/10.1371/journal.pclm.0000023.t002>

Table 2. Seasonality Index (SI) class limits and the associated rainfall regimes.

adapted from [29].

<https://doi.org/10.1371/journal.pclm.0000023.t002>

Temperature regimes were computed for the 1981–2010 climate window since temperature data for the other climate eras (1921–1950 and 1951–1980) were not available. Using both the observed and ERA5 temperature data, the study calculated the mean temperature climatology for the 1981–2010 climate window and mapped out areas with similar patterns. Given that the ground-based temperature observations were point data, ERA5 was used to complement the spatial temperature distributions over the country.

The study also computed the length of the growing season for each climate regime for the 1981–2010 climate window. The Standardized Rainfall Anomaly Index (SRAI) was applied to the monthly rainfall data from the GMet synoptic stations and determined the wet and dry months of station within each climate regime. The wet and dry months were determined because they are critical for defining the length of the growing season. SRAI was originally developed as a drought index [31] and has since been widely used to monitor and assess drought in many research works [32–34]. The SRAI was calculated using Eq 3 as follows:

$$SRAI_n = \frac{(X_n - \mu)}{\sigma} \quad (3)$$

where, X is the climatological monthly rainfall total for month n , μ is the climatological mean monthly rainfall and σ is the standard deviation of the monthly rainfall over the period of observation. Using the SRAI, positive anomalous months were deemed wet, whereas negative anomalous months were considered dry. The number of positive anomalous months was used to determine the length of the growing season for each regime. The first and last positive anomalous month for each regime were classified as the onset and cessation months of the growing season respectively. The corresponding monthly temperature observations (minimum and maximum) for each synoptic station were plotted along with the monthly anomalies to observe monthly temperature fluctuations. Fig 2 below shows a flowchart of summarized steps taken to produce the new agro-climatic zone map of Ghana.

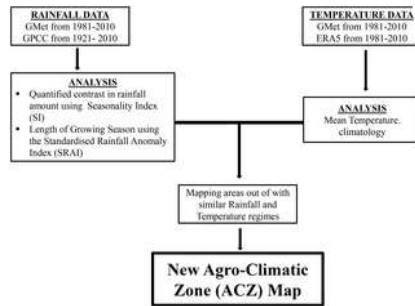


Fig 2. A flowchart illustrating the steps followed to produce the new ACZ map.
<https://doi.org/10.1371/journal.pclm.0000023.g002>

Results

Rainfall regimes

Fig 3 shows the rainfall SI map of Ghana statistically estimated from Eq 2 using the rainfall data for the different climate periods: 1921–1950, 1951–1980 and 1981–2010. The observed 1981–2010 (lower right corner) is a replication of the GPCC 1981–2010 (lower left corner) map using rainfall data from the ground-based weather stations as validation. In this SI map, the contrast in SI is shown. Areas with similar SI values and their geographical extent are delineated for each climate window. The SI ranges clearly reflects changes in seasonal rainfall concentration, as indicated in Table 1. The contrast in rainfall seasonality which defines the different rainfall regimes is closely related to the latitudinal variation over the country. The highest SI values are observed over the northern fringes of the country (mostly at latitudes above 10°C) decreasing to lower values over the forest areas (below latitude 8°C) with coastal areas mimicking that of the Guinea Savannah. It is also observed from the maps that the SI values generally increased from one climate period to the other. That is, SI values for each distinct region were generally low in 1921–1950 period compared to the 1981–2010 period. Besides the increase in the SI values, an expansion in the geographical extent of areas with similar SI values has also been observed. The 1981–2010 period has witnessed the highest spatial expansion of the regimes compared to other periods.

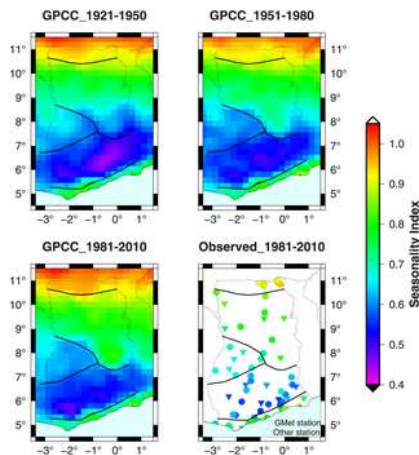


Fig 3. A map of Ghana showing the contrasts in seasonal rainfall indices.

These maps were produced using SI values computed from the GPCC and ground-based weather stations rainfall data. The black solid lines show the geographical boundaries of areas with identical SI values.

<https://doi.org/10.1371/journal.pclm.0000023.g003>

Temperature regimes

Fig 4 shows the temperature regimes of Ghana for the 1981–2010 climate window. In this figure also, areas with similar temperature patterns are delineated. It is observed that the temperature contrast over Ghana mirrors similar patterns seen in the rainfall regime map (see Fig 3). High temperature records are observed over the northern fringes of the country, then falls to lower values over the forest areas. Furthermore, a strong southerly temperature trajectory, particularly in the south-east, is observed from the northern fringes of the country. Coastal temperatures are similar to those in the transition zone and slightly higher than those in the forest areas.

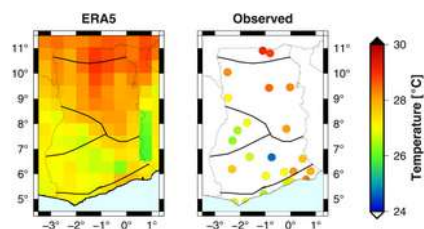


Fig 4. The map of Ghana showing mean temperature patterns.

The map was produced from mean temperature climatology computed from ERA5 and ground-based weather station temperature data for the period 1981–2010.

<https://doi.org/10.1371/journal.pclm.0000023.g004>

Proposed new ACZ map of Ghana and length of growing season

In Fig 5, a new ACZ map of Ghana (on the right) is proposed and contrasted with the existing old map (on the left). The proposed new ACZ map uses the well reflected geographical distinctions in rainfall and temperature contrast over the country (see Figs 3 and 4). Unlike the old ACZ map, five zones were observed in the new map and named as Sudan Savannah, Guinea Savannah, Transition, Forest and the Coastal zones. The Sudan Savannah zone showed highest SI values and covered the northern fringes of the country. In this zone, rainfall is markedly seasonal with longer drier season. As shown in Fig 6, the zone has a single wet period of about 4–5 months (May to September), with the rest of the year remaining dry (October to April). Seasonal temperature distribution ranges between a minimum of 20°C during the harmattan season to a high of about 40°C during the pre-monsoon season. The zone also records the lowest annual rainfall total of about 900 mm and highest annual mean temperature about 29°C.

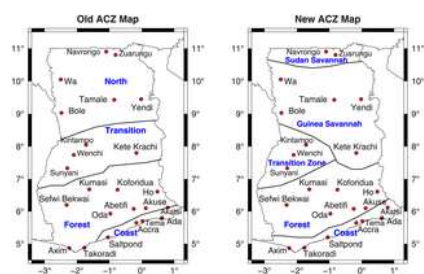


Fig 5. A comparison of Ghana's old (left) and newly proposed (right) ACZ maps.

The brown circular dots indicate the locations of GMet Synoptic stations whose data were used to calculate the growing season length.

<https://doi.org/10.1371/journal.pclm.0000023.g005>

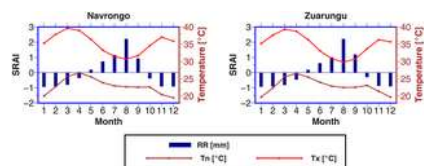


Fig 6. The wet and dry months and temperature distributions for synoptic stations within the Sudan Savannah zone.

<https://doi.org/10.1371/journal.pclm.0000023.g006>

The Guinea Savanna showed the next highest SI values after Sudan Savannah. This region lies between latitudes 8°N and 10°N. Seasonal rainfall in this zone, as shown in Fig 7, is uni-modal with wet period ranging between 5–6 months in the northern parts of the zone (Wa, Tamale and Yendi) to about 6–7 months in the south (Bole and Kete-Krachi). Mean seasonal temperatures are lower than that of the Sudan Savannah and ranges between 20°C and 35°C. Mean annual rainfall ranges between 1100 and 1200 mm with mean annual temperature range of about 28°C to 29°C.

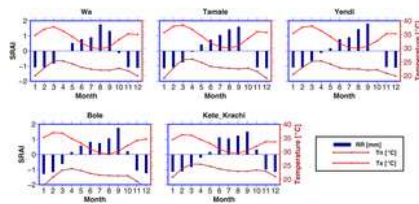


Fig 7. The wet and dry months and temperature distribution for synoptic stations within the Guinea Savannah zone.
<https://doi.org/10.1371/journal.pclm.0000023.g007>

The Forest zone showed the lowest SI ranges and covers the areas between 5°N and 8°N. Fig 8 shows that rainfall in this zone is seasonal but with a shorter dry season compared to the Guinea Savannah zone. It also shows a bi-modal rainfall season with two wet seasons, a major and minor season. The first rainy season (major season) starts from March to July with a dip in August followed by a minor rainy season from September to October. This zone also shows the lowest temperature records from as low as 18°C to a maximum below 35°C. The zone records the highest annual rainfall total of about 1300–1800 mm and with mean annual temperature of about 26.5°C.

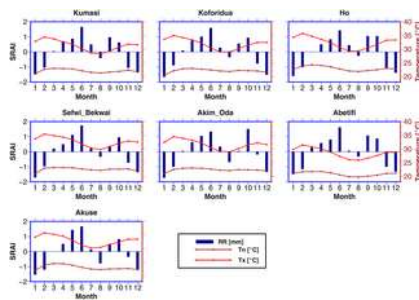


Fig 8. The wet and dry months and temperature distribution for synoptic stations within the Forest zone.
<https://doi.org/10.1371/journal.pclm.0000023.g008>

In Fig 9, the seasonal rainfall and temperature characteristics of the Transition zone are shown. It is observed that the transition zone exhibits similar seasonal characteristics as that of the forest zone. The difference is that mean annual rainfall total for the transition zone is lower compared with that of the forest areas.

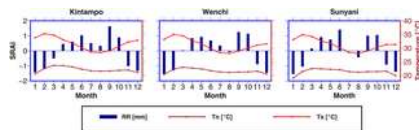


Fig 9. The wet and dry months and temperature distribution for synoptic stations within the Transition zone.
<https://doi.org/10.1371/journal.pclm.0000023.g009>

The Coastal zone has similar seasonal rainfall and temperature characteristics as the Guinea Savannah zone. Unlike the Guinea Savannah zone, the coastal zone has a bi-modal rainfall season (see Fig 10) as observed in the Forest zone. However, the major monsoon season of the Coastal zone is shorter in duration compared with the forest zone. In addition, the minor season is not as distinctive as observed in the forest zone.

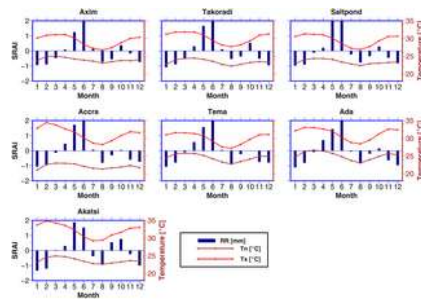


Fig 10. The wet and dry months and temperature distribution for synoptic stations within the Coastal zone.
<https://doi.org/10.1371/journal.pclm.0000023.g010>

In general, Ghana experiences a tropical climate. As shown in Fig 11, the annual mean total rainfall varies from as low as 800–900 mm in the Sudan Savannah and Coastal zones to as high as 1900 mm in the Forest zone. Most of the high annual total mean rainfall are observed in major parts of the Forest zones, southeastern fringes of the Guinea Savannah and Transition zones. The highest annual total rainfall of about 1900 mm is observed in the extreme South-Western part of the country. Major parts of the Guinea Savannah zone has annual total mean rainfall of about 1100 mm. There is a wide spatial and temporal variations in both the seasonal and annual rainfall. The reliability in seasonal and annual rainfall over the country increases with decreasing latitudes from North to South. The mean annual temperature is observed to vary from about 25.5°C around the south-Western coastal areas to about 30°C in the northern parts of the country.

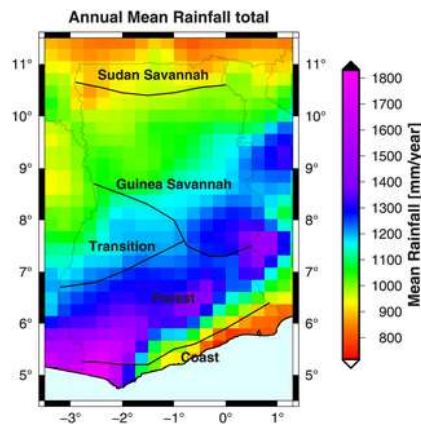


Fig 11. A map of Ghana showing patterns in mean annual total rainfall.
 This map was produced from annual total rainfall climatology computed from GPCC data for the period 1981–2010.
<https://doi.org/10.1371/journal.pclm.0000023.g011>

Discussions

Ghana's existing ACZs were examined and reclassified to reflect current climate change and variability. We quantified the contrast in rainfall and temperature amounts in Ghana over a 30-year period and mapped out places with comparable patterns. Our work re-defined the geographical space of Ghana into five ACZs namely Sudan Savannah, Guinea Savannah, Transition, Forest, and Coastal zones. The previously designated Northern belt (old map) was reclassified into the Sudan Savannah and Guinea Savannah zones. The Guinea Savannah zone showed a southerly expansion, engulfing much of the transition zone as well as extending slightly into the forest zone. The Coastal Zone has also been expanded to encompass all places along Ghana's coast.

The contrast in rainfall and temperature amount observed among climate zones can be linked to the movement of the Inter-Tropical Convergence Zone (ITCZ) north and south of the country. The ITCZ modulates the West African Monsoon pressure systems, resulting in the country's rainy and dry seasons [8, 18]. In the Sudan Savannah, Guinea Savannah, and Transition zones, the ITCZ oscillation provides a unimodal rainfall distribution, but in Ghana's Forest and Coastal areas, it creates a bimodal rainfall distribution. In all the five identified zones, the rainy seasons doubles as the growing seasons and the number of rainy months determines the length of the growing season. The rainy season in the Sudan Savannah zone lasts from May to September, with August seeing the most precipitation. It rains from April/May through October in Guinea Savannah, with September being the wettest month. Two rainy seasons are experienced in Ghana's south, which includes the Forest and Coastal belts. The first season runs from March to July, with June being the wettest month, while the second (minor) season runs from September to mid-November, with October being the wettest month. Other mechanisms such as local convective activities, sea surface temperature and atmospheric dynamic stability also influence the rainfall pattern in the country [9]. For instance, the more months of rainfall in the forest zone is attributed to the influence of the Togo-Akwapim mountain ranges, which stretch from Togo through to the central part of the forest zone of Ghana. These ranges are known to enhance the convective activities of the forest zone, and areas in the

windward side of the mountains are strongly affected [8]. The coastal zone showing indexes of similar magnitudes to that of the Guinea Savannah zone is attributed to the low moisture content in the area due to the flat physical nature of the land and the monsoon winds blowing parallel to the coastal land. The harmattan, which is a dry desert wind from north-east dominates the country from December to February. The presence of the harmattan winds is predominant in the North, lowering the humidity and causing hotter days and cooler nights in this part of the country. Mean maximum temperature are low during the harmattan months and highest during the months of March to April especially in the North.

As previously mentioned [6, 13, 14], the shifting limits of the ACZs and the decline in seasonal rainfall are strong indications of climate change and variability. The Sudan Savannah zone has expanded into the Guinea Savannah zone, while the Guinea Savannah zone has expanded into the Transition and Forest zones. In these instances, a spread of arid conditions from the previous zone to the next is observed. The spread of arid conditions is another evident evidence of climate change and variation. As a result, scheduling the ideal period for crop cultivation becomes more complex, making ACZs less useful as a planning tool for successful and sustainable agricultural production. The Sudan and Guinea Savannah zones are important for cereal crops like maize, soya beans, peanuts, and tubers like yam, all of which contribute significantly to Ghana's economy [35]. The growth of arid conditions in these zones indicates a reduction in the appropriateness of certain crops for cultivation. This has major consequences for food security, necessitating the adoption of climate change and variability mitigation techniques by farmers.

Other studies [36–38] have applied the length of growing season as an additional criterion for ACZs classification. The growing season defines the period of the year when both moisture and temperature conditions are suitable for crop production [37]. The growing period concept is essential because it provides a way of including seasonality in land resource appraisal [36]. The SRAI was used as our approach to determining the length of the growing season. This index was chosen because it can accommodate dry spells in the middle of the season as well as specify wet and dry month of the season. It can also display the borders and number of zonal shifts in rainfall regimes over an area, as well as the period of rainfall concentration within a year.

Conclusions

In this study, we evaluated the age-old ACZ map of Ghana and reconstructed it to a more appropriate and dis-aggregated map that reflect current climatic changes and variability in Ghana. The new map was produced by quantifying the contrast in monthly rainfall and temperature amount over a 30 year period across the country using simple statistical indexes and mapped out areas with similar climate regimes. Our study clearly found that the existing ACZ had changed significantly in terms of the number of climate zones, their boundary sizes and geographical orientation. Based on these changes, a new ACZ map was proposed with five distinct climate zones namely: the Sudan Savannah, Guinea Savannah, Transition, Forest and Coastal zones. Our results also identified the Sudan and Guinea Savannah zones as areas where farmers may face challenges related to adverse climate conditions as well as ever changing climate environment. The newly proposed ACZ map will allow for area-specific land use planning, assist farmers in developing and implementing climate resilient management plans, help GMet create area-specific seasonal forecast as well as help health officials track climate-related diseases across the zones.

Supporting information

S1 Data.

<https://doi.org/10.1371/journal.pclm.0000023.s001>
(ZIP)

Acknowledgments

Acknowledgement is due Ghana Meteorological Agency for making their data available for this work.

References

1. Van Wart J, van Bussel LG, Wolf J, Licker R, Grassini P, Nelson A, et al. Use of agro-climatic zones to upscale simulated crop yield potential. *Field crops research*. 2013;143:44–55.
[View Article](#) • [Google Scholar](#)
2. Adnan S, Ullah K, Gao S, Khosa AH, Wang Z. Shifting of agro-climatic zones, their drought vulnerability, and precipitation and temperature trends in Pakistan. *International Journal of Climatology*. 2017;37:529–543.
[View Article](#) • [Google Scholar](#)
3. Araya A, Keesstra S, Stroosnijder L. A new agro-climatic classification for crop suitability zoning in northern semi-arid Ethiopia. *Agricultural and Forest Meteorology*. 2010;150(7-8):1057–1064.
[View Article](#) • [Google Scholar](#)
4. Lin Y, Liu A, Ma E, Zhang F. Impacts of future climate changes on shifting patterns of the agro-ecological zones in China. *Advances in Meteorology*. 2013;2013.
[View Article](#) • [Google Scholar](#)
5. Williams CL, Liebman M, Edwards JW, James DE, Singer JW, Arriett R, et al. Patterns of regional yield stability in association with regional environmental characteristics. *Crop science*. 2008;48(4):1545–1559.
[View Article](#) • [Google Scholar](#)
6. Asante FA, Amuakwa-Mensah F. Climate change and variability in Ghana: Stocktaking. *Climate*. 2015;3(1):78–99.
[View Article](#) • [Google Scholar](#)

7. Codjoe SNA, Owusu G. Climate change/variability and food systems: evidence from the Afram Plains, Ghana. *Regional Environmental Change*. 2011;11(4):753–765.
[View Article](#) • [Google Scholar](#)
8. Amekudzi LK, Yamba EI, Preko K, Asare EO, Aryee J, Baidu M, et al. Variabilities in rainfall onset, cessation and length of rainy season for the various agro-ecological zones of Ghana. *Climate*. 2015;3(2):416–434.
[View Article](#) • [Google Scholar](#)
9. Baidu M, Amekudzi LK, Aryee JN, Annor T. Assessment of long-term spatio-temporal rainfall variability over Ghana using wavelet analysis. *Climate*. 2017;5(2):30.
[View Article](#) • [Google Scholar](#)
10. Ndamani F, Watanabe T. Farmers' perceptions about adaptation practices to climate change and barriers to adaptation: A micro-level study in Ghana. *Water*. 2015;7(9):4593–4604.
[View Article](#) • [Google Scholar](#)
11. Yaro JA. The perception of and adaptation to climate variability/change in Ghana by small-scale and commercial farmers. *Regional Environmental Change*. 2013;13(6):1259–1272.
[View Article](#) • [Google Scholar](#)
12. Fosu-Mensah BY, Vlek PL, MacCarthy DS. Farmers' perception and adaptation to climate change: a case study of Sekyedumase district in Ghana. *Environment, Development and Sustainability*. 2012;14(4):495–505.
[View Article](#) • [Google Scholar](#)
13. Browne Klutse NA, Owusu K, Adukpo DC, Nkrumah F, Quagraine K, Owusu A, et al. Farmer's observation on climate change impacts on maize (*Zea mays*) production in a selected agro-ecological zone in Ghana. *Research Journal of Agriculture and Environmental Management*. 2013;2(12):394.
[View Article](#) • [Google Scholar](#)
14. Limantol AM, Keith BE, Azabre BA, Lennartz B. Farmers' perception and adaptation practice to climate variability and change: a case study of the Veia catchment in Ghana. *SpringerPlus*. 2016;5(1):1–38.
[View Article](#) • [Google Scholar](#)
15. Aniah P, Kaunza-Nu-Dem MK, Ayembilla JA. Smallholder farmers' livelihood adaptation to climate variability and ecological changes in the savanna agro ecological zone of Ghana. *Heliyon*. 2019;5(4):e01492. pmid:31049426
[View Article](#) • [PubMed/NCBI](#) • [Google Scholar](#)
16. Bessah E, Amponsah W, Ansah SO, Afrifa A, Yahaya B, Wemegah CS, et al. Climatic zoning of Ghana using selected meteorological variables for the period 1976–2018. *Meteorological Applications*. 2022;29(1):e2049.
[View Article](#) • [Google Scholar](#)
17. Aryee J, Amekudzi L, Quansah E, Klutse N, Atiah W, Yorke C. Development of high spatial resolution rainfall data for Ghana. *International Journal of Climatology*. 2018;38(3):1201–1215.
[View Article](#) • [Google Scholar](#)
18. Wemegah CS, Yamba EI, Aryee JN, Sam F, Amekudzi LK. Assessment of urban heat island warming in the greater Accra region. *Scientific African*. 2020;8:e00426.
[View Article](#) • [Google Scholar](#)
19. Patil M. Change in seasonality index of rainfall in Sangli district. *Indian Streams Research Journal*. 2015;5(1):1–7.
[View Article](#) • [Google Scholar](#)
20. Owusu K, Waylen PR. The changing rainy season climatology of mid-Ghana. *Theoretical and Applied Climatology*. 2013;112(3–4):419–430.
[View Article](#) • [Google Scholar](#)
21. Manzanar R, Amekudzi L, Preko K, Herrera S, Gutiérrez J. Precipitation variability and trends in Ghana: An intercomparison of observational and reanalysis products. *Climatic change*. 2014;124(4):805–819.
[View Article](#) • [Google Scholar](#)
22. Ansah S, Ahiataku M, Yorke C, Otu-Larbi F, Yahaya B, Lamptey P, et al. Meteorological analysis of floods in Ghana. *Advances in Meteorology*. 2020;2020.
[View Article](#) • [Google Scholar](#)
23. Schneider U, Becker A, Finger P, Meyer-Christoffer A, Ziese M. GPCC Full Data Monthly Product Version 2018 at 0.25°: Monthly Land-Surface Precipitation from Rain-Gauges Built on GTS-Based and Historical Data. GPCC: Offenbach, Germany. 2018;.

24. Atiah WA, Tsidu GM, Amekudzi LK. Investigating the merits of gauge and satellite rainfall data at local scales in Ghana, West Africa. *Weather and Climate Extremes*. 2020;30:100292.
[View Article](#) • [Google Scholar](#)
25. Funk C, Peterson P, Landsfeld M, Pedreros D, Verdin J, Shukla S, et al. The climate hazards infrared precipitation with stations—a new environmental record for monitoring extremes. *Scientific data*. 2015;2(1):1–21. PMID:26646728
[View Article](#) • [PubMed/NCBI](#) • [Google Scholar](#)
26. Hersbach H, Bell B, Berrisford P, Hirahara S, Horányi A, Muñoz-Sabater J, et al. The ERA5 global reanalysis. *Quarterly Journal of the Royal Meteorological Society*. 2020;146(730):1999–2049.
[View Article](#) • [Google Scholar](#)
27. Gleixner S, Demissie T, Diro GT. Did ERA5 improve temperature and precipitation reanalysis over East Africa? *Atmosphere*. 2020;11(9):996.
[View Article](#) • [Google Scholar](#)
28. Parsons D, Stern D, Ndanguza D, Sylla MB. Evaluation of satellite-based air temperature estimates at eight diverse sites in Africa. *Climate*. 2022;10(7):98.
[View Article](#) • [Google Scholar](#)
29. Walsh R, Lawler D. Rainfall seasonality: description, spatial patterns and change through time. *Weather*. 1981;36(7):201–208.
[View Article](#) • [Google Scholar](#)
30. Feng X, Porporato A, Rodriguez-Iturbe I. Changes in rainfall seasonality in the tropics. *Nature Climate Change*. 2013;3(9):811.
[View Article](#) • [Google Scholar](#)
31. Kraus E. Subtropical droughts and cross-equatorial energy transports. *Monthly weather review*. 1977;105(8):1009–1018.
[View Article](#) • [Google Scholar](#)
32. Ali A, Lebel T. The Sahelian standardized rainfall index revisited. *International Journal of Climatology: A Journal of the Royal Meteorological Society*. 2009;29(12):1705–1714.
[View Article](#) • [Google Scholar](#)
33. Svoboda M, Hayes M, Wood D, et al. Standardized precipitation index user guide. World Meteorological Organization Geneva, Switzerland. 2012;900.
[View Article](#) • [Google Scholar](#)
34. Chanda K, Maity R. Meteorological drought quantification with standardized precipitation anomaly index for the regions with strongly seasonal and periodic precipitation. *Journal of Hydrologic Engineering*. 2015;20(12):06015007.
[View Article](#) • [Google Scholar](#)
35. Bawayelaazaa Nyuor A, Donkor E, Aidoo R, Saaka Buah S, Naab JB, Nutsugah SK, et al. Economic impacts of climate change on cereal production: implications for sustainable agriculture in Northern Ghana. *Sustainability*. 2016;8(8):724.
[View Article](#) • [Google Scholar](#)
36. Mugandani R, Wuta M, Makarau A, Chipindu B. Re-classification of agro-ecological regions of Zimbabwe in conformity with climate variability and change. *African Crop Science Journal*. 2012;20:361–369.
[View Article](#) • [Google Scholar](#)
37. Chikodzi D, Zinhiva H, Simba FM, Murwendo T, et al. Reclassification of agroecological zones in Zimbabwe—the rationale, methods and expected benefits: the case of Masvingo Province. *Journal of Sustainable Development in Africa*. 2013;15(1):104–116.
[View Article](#) • [Google Scholar](#)
38. Bisht H, Gautam S, PURANIK H, Nain A. Agro-ecological zonation of Uttarakhand using geo-spatial techniques. *Indian Journal of Agricultural Sciences*. 2019;89(11):40–44.
[View Article](#) • [Google Scholar](#)