

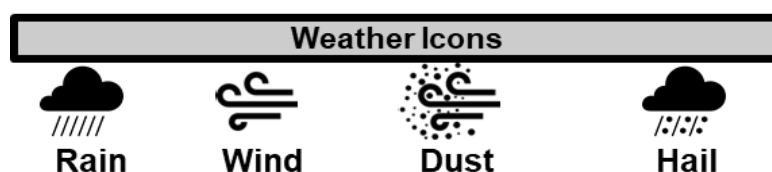
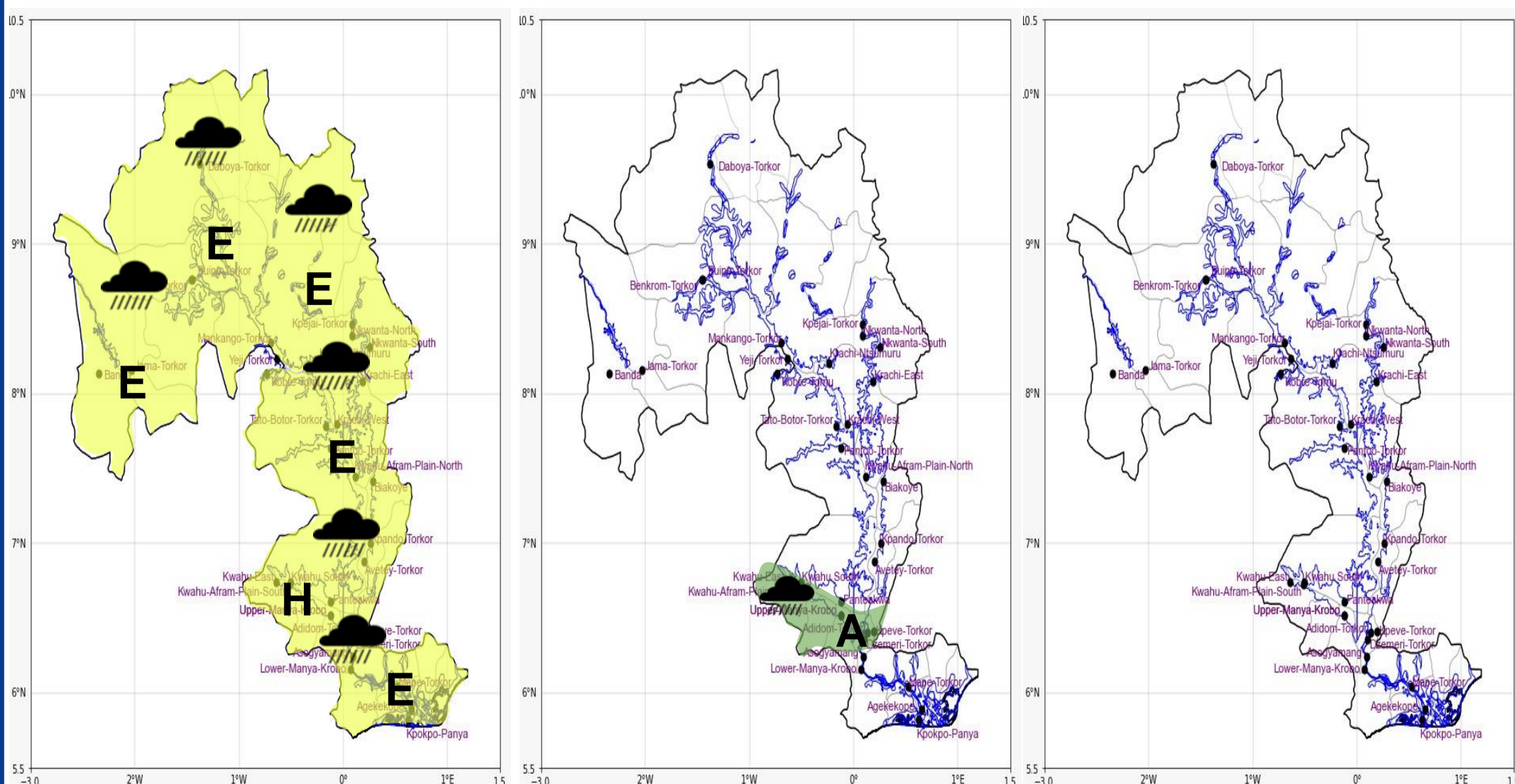


## INLAND WATER IMPACT-BASED FORECAST

## WEATHER SUMMARY

The prevailing cloudy weather conditions along the lake and its environs is expected to persist throughout the entire forecast period. Cloud development will produce thunderstorms of varying intensities accompanied by strong winds across the lake's vicinity tonight and over some southern sector areas in the morning.

<b>EVENING (26/03/2025)</b>	<b>MORNING (27/03/2025)</b>	<b>AFTERNOON (27/03/2025)</b>
-----------------------------	-----------------------------	-------------------------------



<b>Date</b>
26/03/2025
<b>Time Issued</b>
04:00 PM
<b>Valid From</b>
06:00 PM
<b>Nowcasting Risk</b>
<b>Take Action</b>
<b>Be aware</b>
<b>Low risk</b>
<b>No risk</b>

Weather Forecast Risk Table				
Likelihood ↑	High (>60%)	G	H	I
	Medium (40%-60%)	D	E	F
	Low (<40%)	A	B	C
		Low	Medium	High
		Impact →		

Time	Surface Wind	Visibility	Temperature
24 hours	S/SW 05 Max 22 kt	(5 – 10) km	(23 – 36) °C
48 hours	S/SE 05 Max 20 kt	(5 – 10) km	(23 – 36) °C