

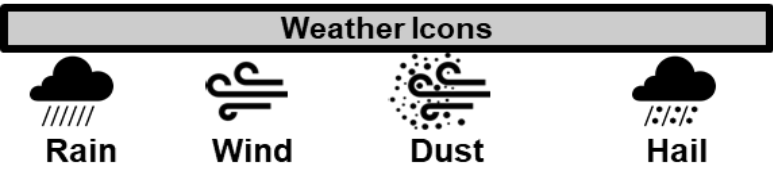
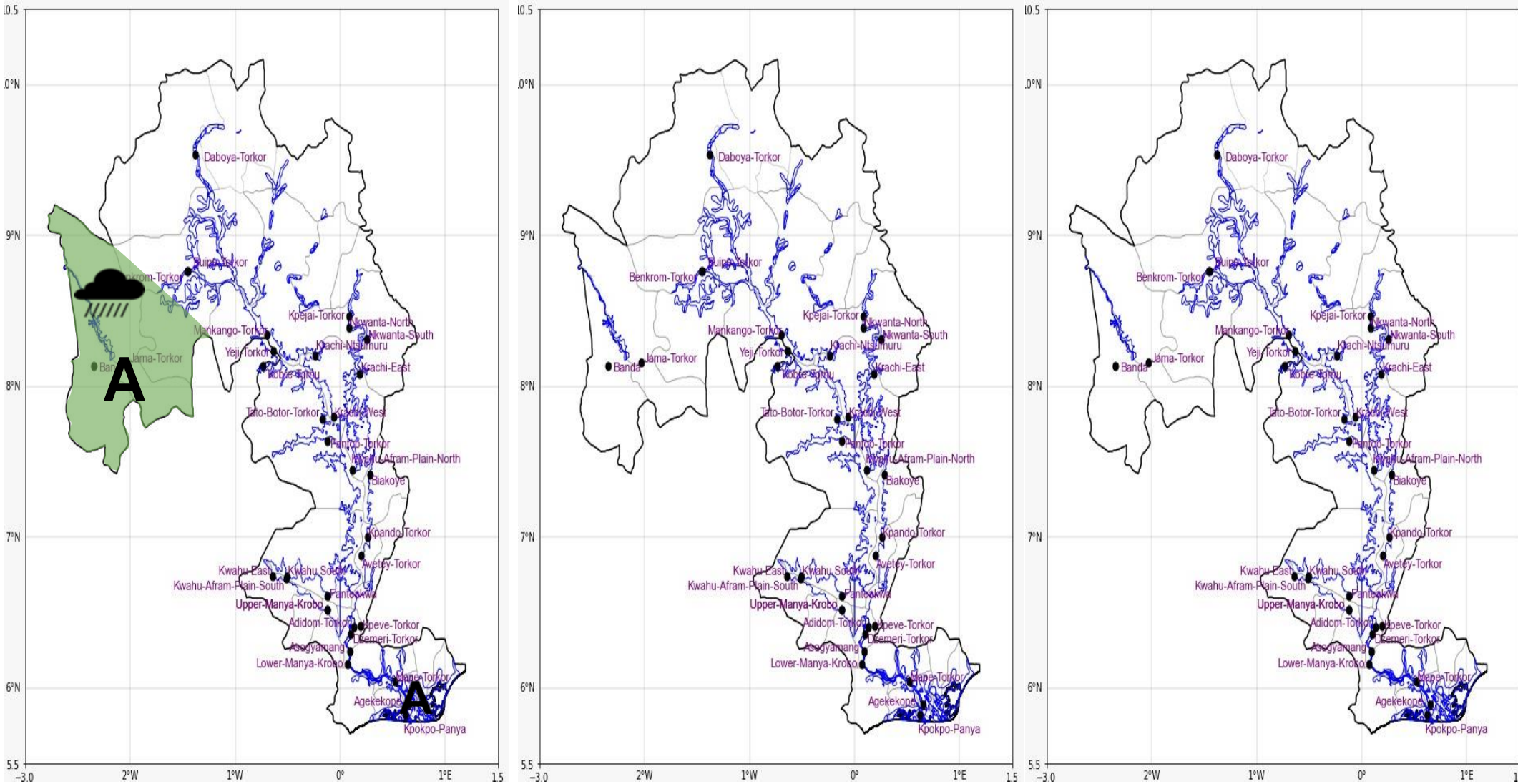


INLAND WATER IMPACT-BASED FORECAST

WEATHER SUMMARY

The sky above the lake and its neighboring communities will be cloudy of varying intensities with a 30% chance of slight to moderate rain with or without thundery activities this evening. Varyingly cloudy weather conditions are expected to prevail during the morning hours.

EVENING (17/04/2025)	MORNING (18/04/2025)	AFTERNOON (18/04/2025)
----------------------	----------------------	------------------------



Date
17/04/2025
Time Issued
04:00 PM
Valid From
06:00 PM
Nowcasting Risk
Take Action
Be aware
Low risk
No risk

Likelihood ↑	Weather Forecast Risk Table		
	High (>60%)	G	H
	Medium (40%-60%)	D	E
	Low (<40%)	A	B
	Low	Medium	High
	Impact →		

Time	Surface Wind	Visibility	Temperature
24 hours	S/SE 05 Max 19 kt	(4 – 10) km	(22 – 33) °C
48 hours	S/SW 05 Max 22 kt	(5 – 10) km	(22 – 33) °C