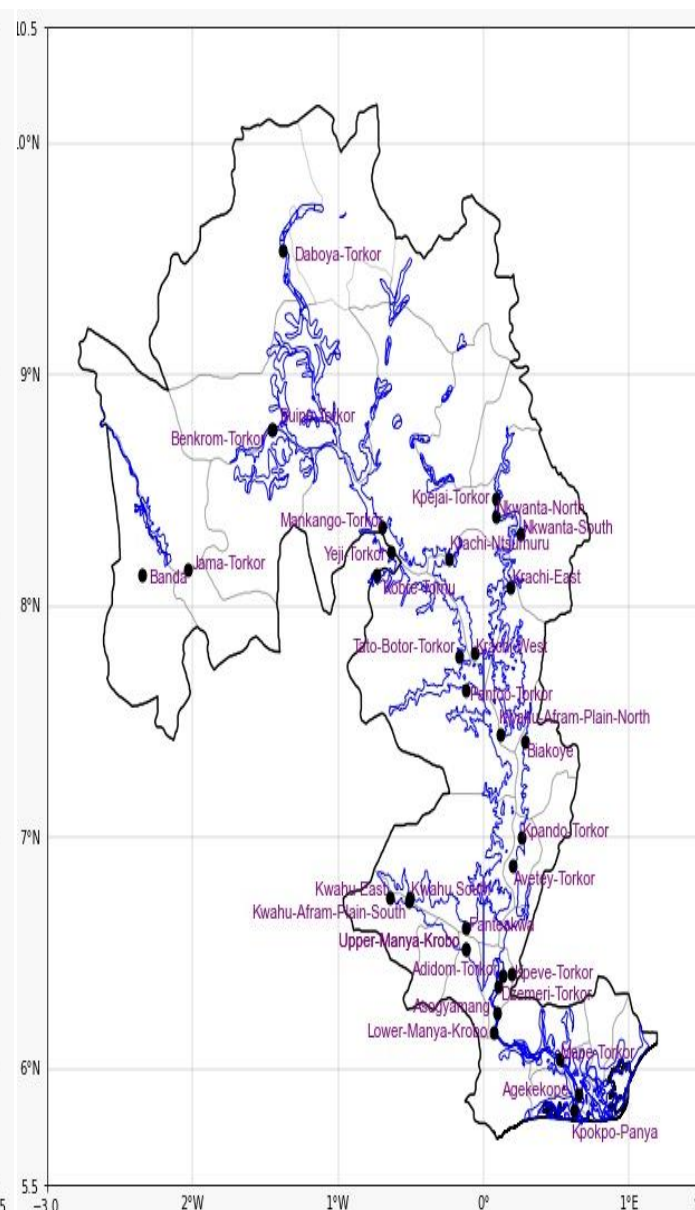
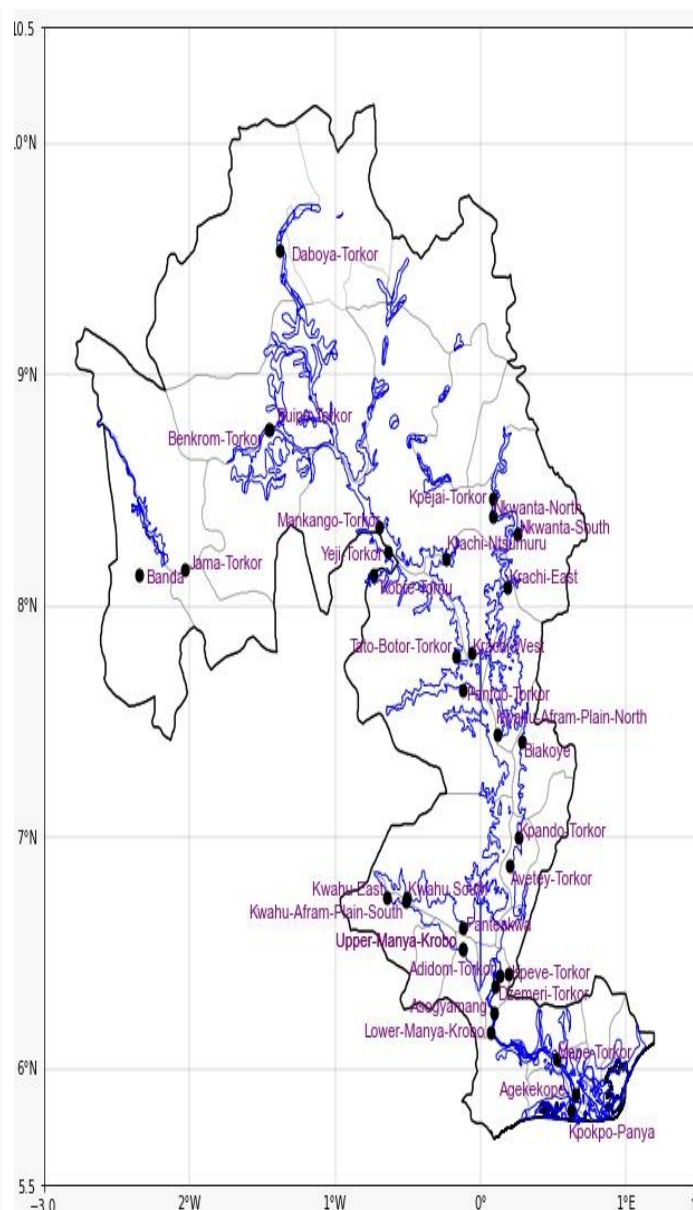
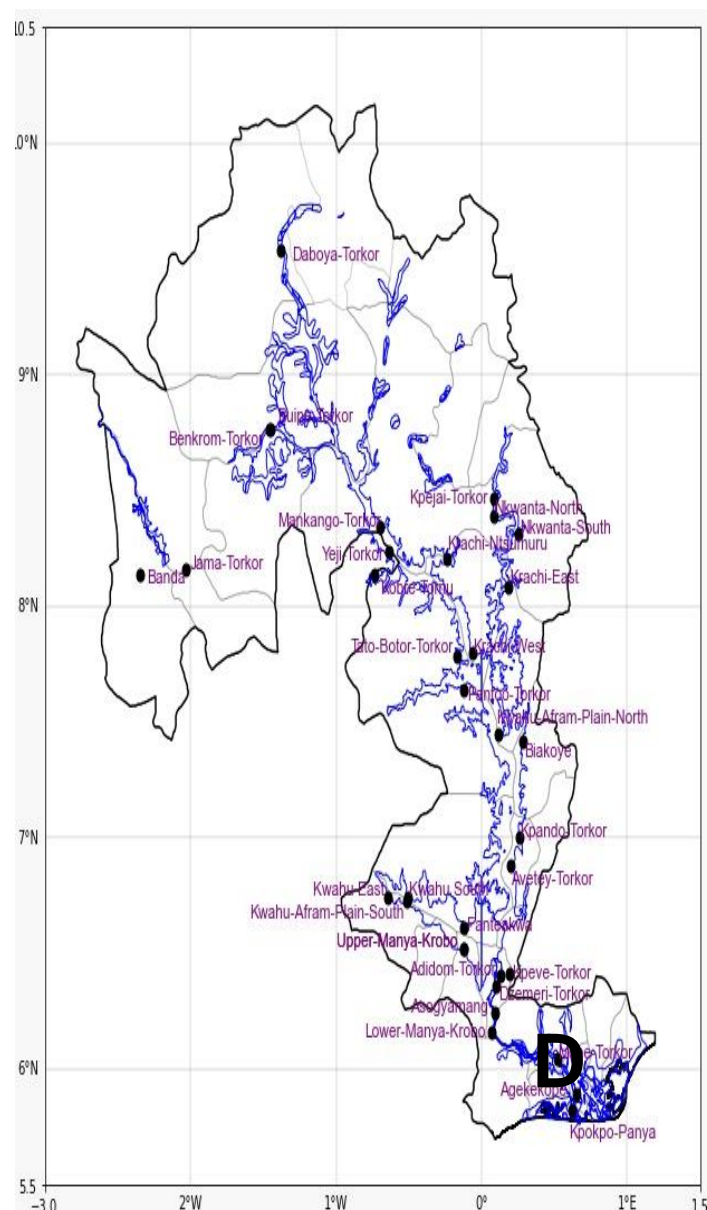




INLAND WATER IMPACT-BASED FORECAST WEATHER SUMMARY

The morning is expected to be partly cloudy across the lake and its surrounding vicinities. Brief moments of sunshine are anticipated over the lake and its nearby towns in the afternoon.

MORNING (03/10/2024)	AFTERNOON (03/10/2024)	EVENING (03/10/2024)
----------------------	------------------------	----------------------



Date
03/10/2024
Time Issued
4:00 AM
Valid From
6:00 AM
Nowcasting Risk
Take Action
Be aware
Low risk
No risk

Weather Forecast Risk Table				
Likelihood ↑	High (>60%)	G	H	I
	Medium (40%-60%)	D	E	F
	Low (<40%)	A	B	C
		Low	Medium	High
		Impact →		

Time	Surface Wind	Visibility	Temperature
24 hours	W/NW 05 Max 15 kt	(5 – 10) km	(21 – 30) °C
48 hours	W/SW 05 Max 15 kt	(5 – 10) km	(21 – 30) °C