



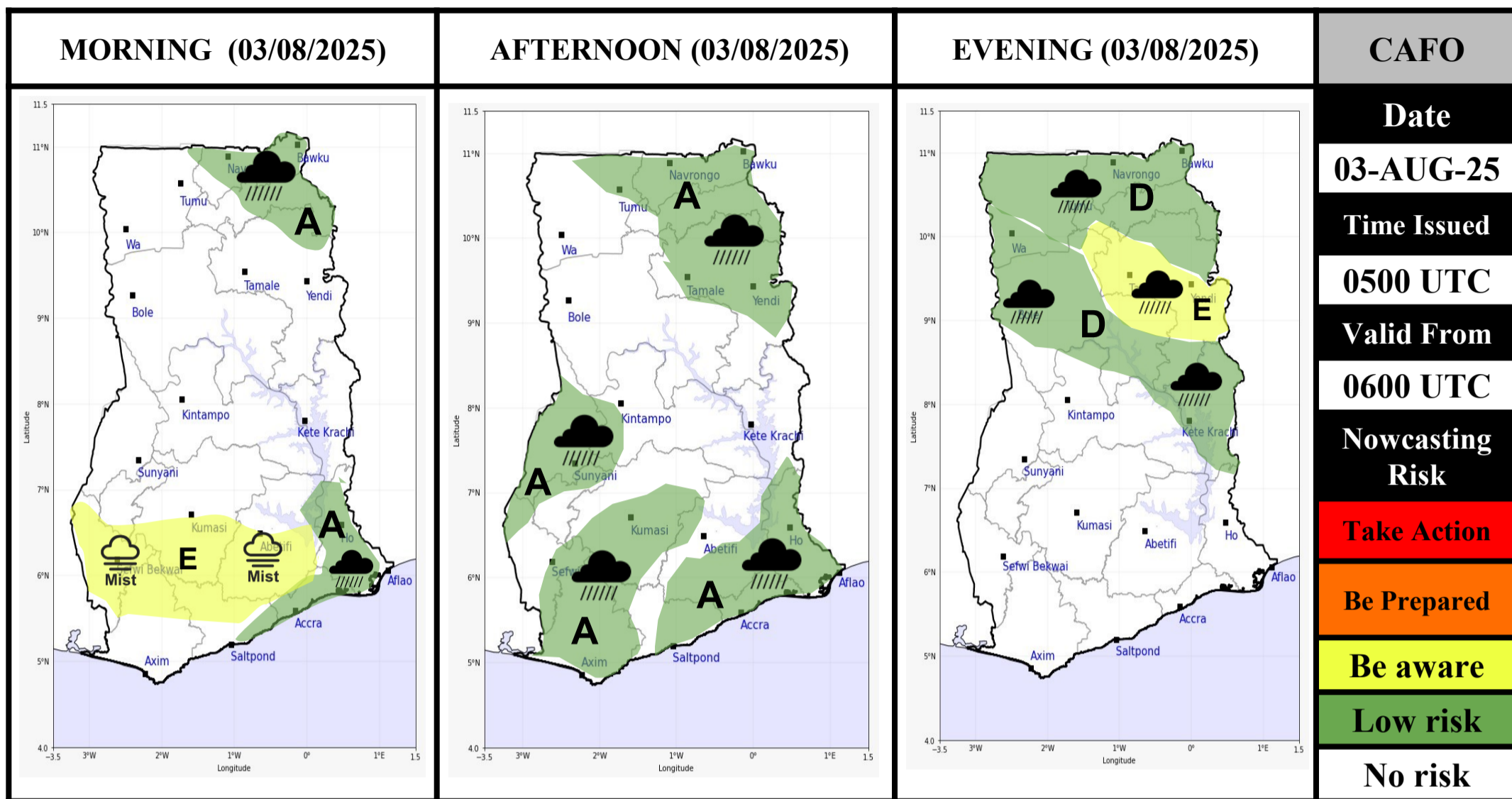
# GHANA METEOROLOGICAL AGENCY

P. O. Box LG 87, Accra  
Tel: +233-302-543252 / 307010019  
Digital Address: GA-485-3581

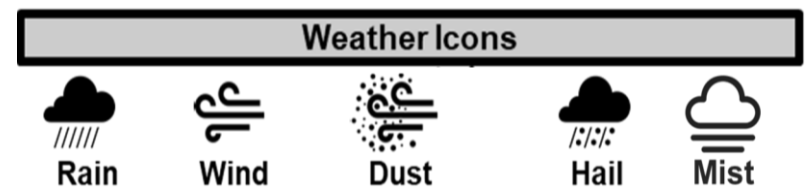
Email: info@meteo.gov.gh  
Website: www.meteo.gov.gh  
Twitter: @GhanaMet  
Facebook: Ghana Meteorological Agency (GMet)



## 24-HOUR IMPACT-BASED FORECAST FOR GHANA



Weather Forecasting Risk Table				
Likelihood ↑	High (>60%)	G	H	I
	Medium (40% - 60%)	D	E	F
	Low (<40%)	A	B	C
		Low	Medium	High
		Impact →		



Sector	Minimum Temperature (°C)	Maximum Temperature (°C)
Coast	23	28
Forest	22	29
Transition	23	30
Northern	23	31

**SUMMARY:** In general, the country will experience mostly cloudy to variable weather conditions, with slight rain or drizzle expected in parts of the southern sector from morning into the afternoon. Mist and fog patches are also likely to form over forest and mountainous areas during the early hours, leading to reduced visibility. Meanwhile, isolated thunderstorms or rain are anticipated over parts of the northern sector throughout the forecast period.

**NB:** Cold early morning and late evening temperatures are expected over the entire country.

**SIGNED:** Central Analysis and Forecasting Office (CAFO)