

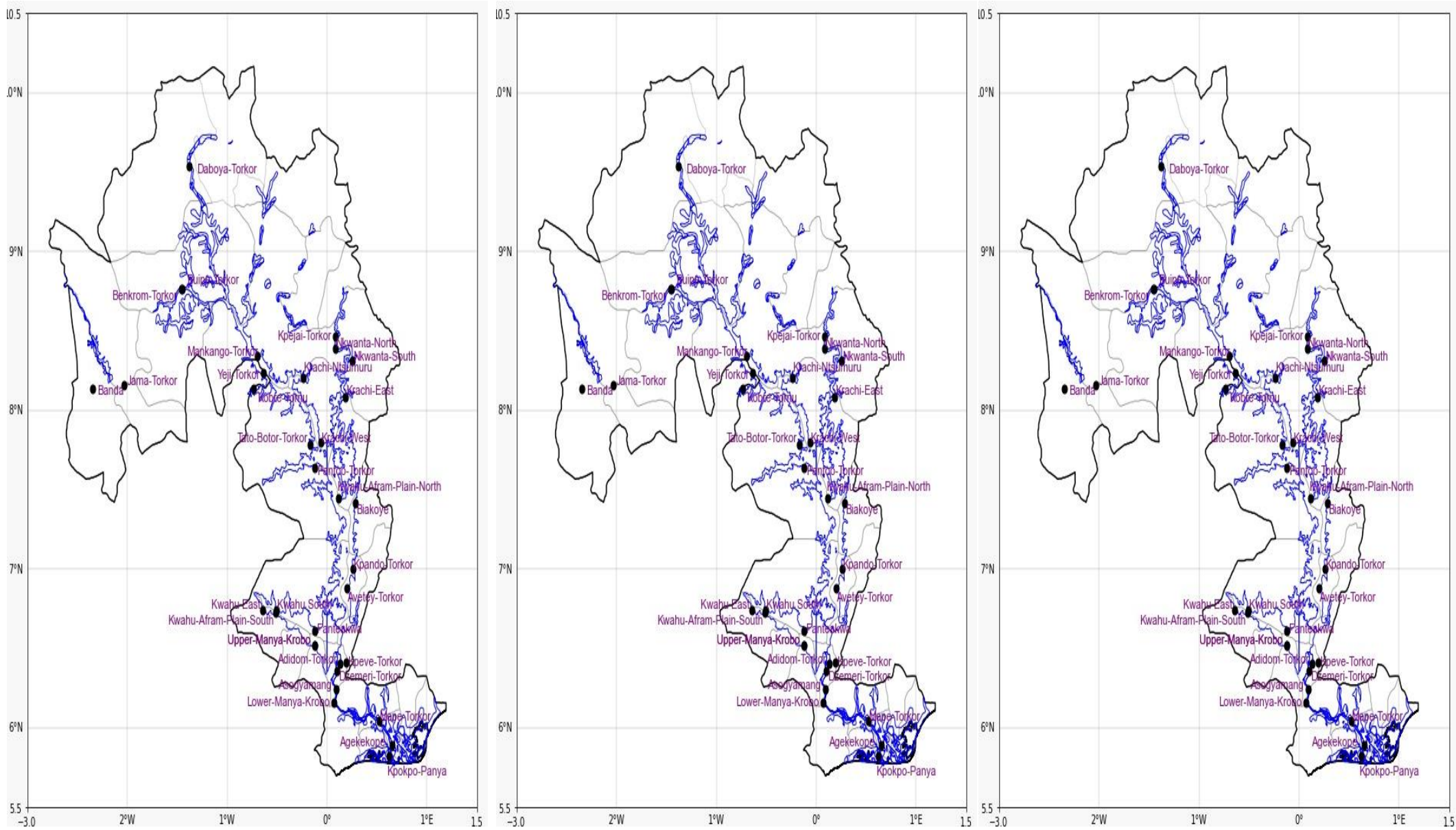


INLAND WATER IMPACT-BASED FORECAST

WEATHER SUMMARY

Clouds amidst sunshine periods are expected over the lake and its surroundings during the afternoon hours. As the evening hour approaches, variably cloudy weather conditions will be experienced across the sectors of the lake.

AFTERNOON (26/10/2025)	EVENING (26/10/2025)	MORNING (27/10/2025)
------------------------	----------------------	----------------------



Date
26/10/2025
Time Issued
10:00 AM
Valid From
12:00 PM
Nowcasting Risk
Take Action
Be aware
Low risk
No risk

Likelihood	Weather Forecast Risk Table		
	High (>60%)	G	H
	Medium (40%-60%)	D	E
	Low (<40%)	A	B
		Low	Medium
		High	
		Impact	

Time	Surface Wind	Visibility	Temperature
24 hours	S/SE 05 Max 20 kt	(5 – 10) km	(22 – 35) °C
48 hours	S/SW 05 Max 15 kt	(5 – 10) km	(22 – 35) °C