

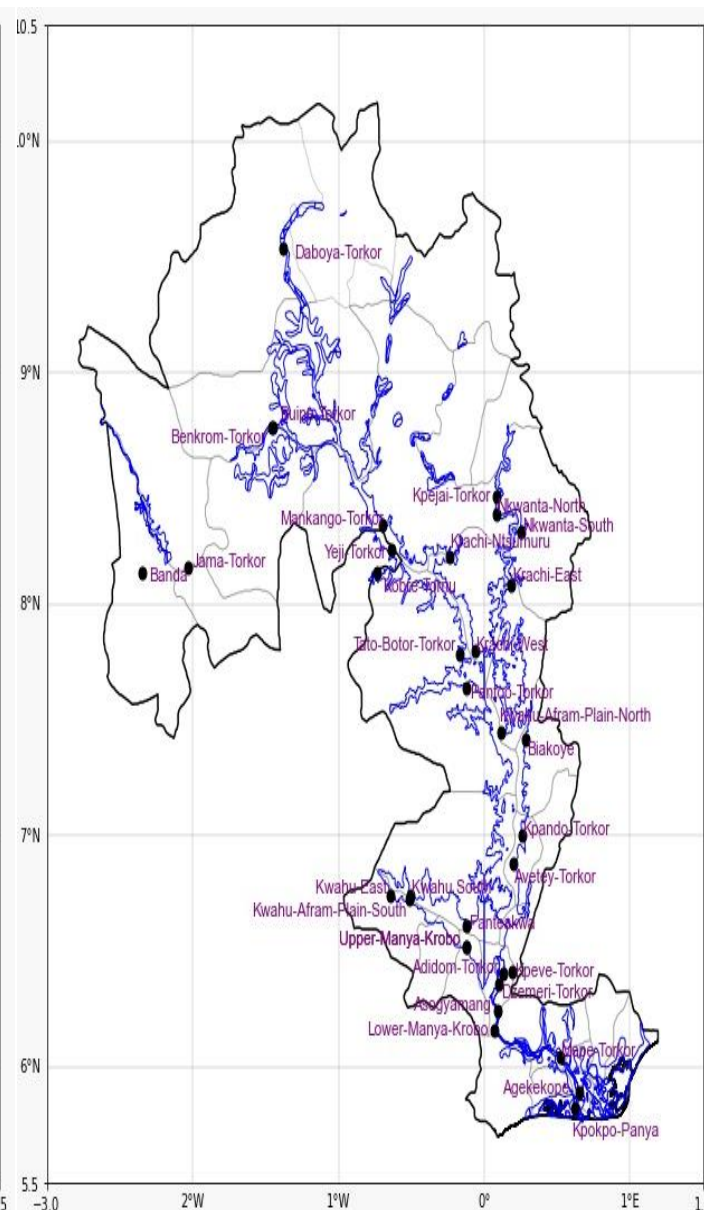
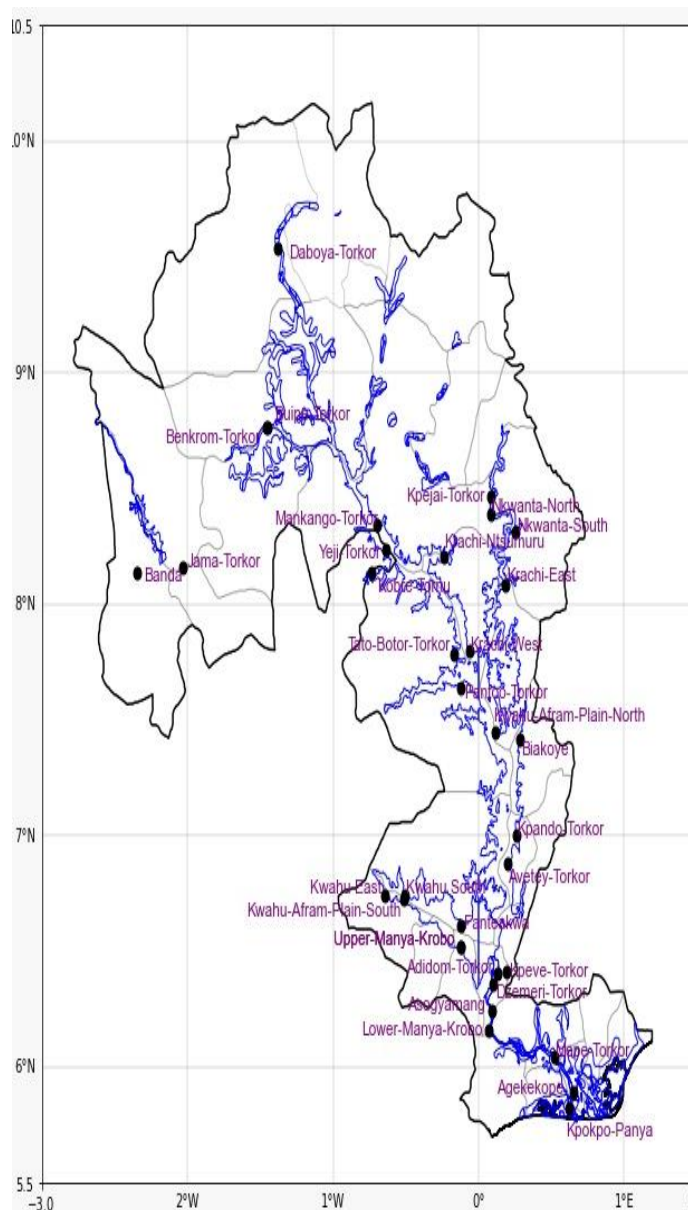
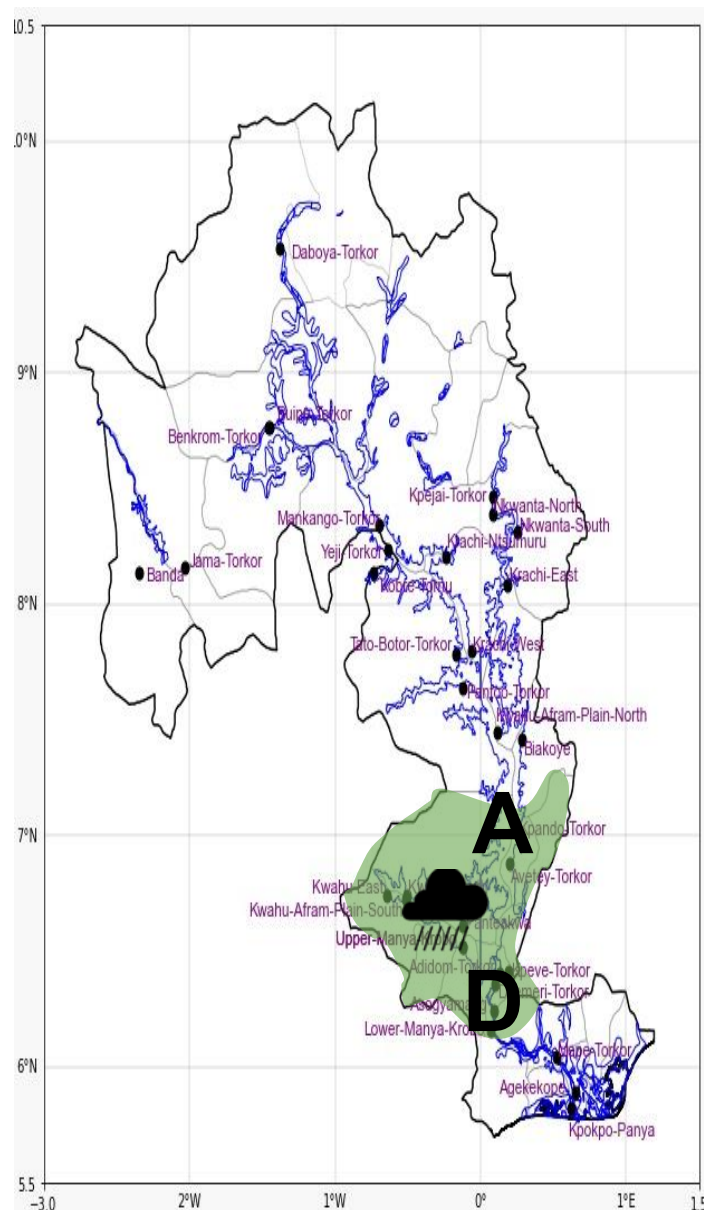


INLAND WATER IMPACT-BASED FORECAST

WEATHER SUMMARY

Variably cloudy weather conditions are expected over the lake and surrounding communities tonight through to the end of the forecast period, with cases of thunderstorms and rain over some areas in the southern sector. Mist is expected to reduce visibility over forest and hilly zones during the early morning hours.

EVENING (26/10/2025)	MORNING (27/10/2025)	AFTERNOON (27/10/2025)
----------------------	----------------------	------------------------



Date
26/10/2025
Time Issued
4:00 PM
Valid From
06:00 PM
Nowcasting Risk
Take Action
Be aware
Low risk
No risk

Weather Forecast Risk Table

Likelihood ↑	High (>60%)	G	H	I
	Medium (40%-60%)	D	E	F
	Low (<40%)	A	B	C
		Low	Medium	High

Impact →

Time	Surface Wind	Visibility	Temperature
12 hours	S/SE 05 Max 15 kt	(5 – 10) km	(22 – 31) °C
24 hours	S/SW 05 Max 20 kt	(5 – 10) km	(22 – 35) °C