

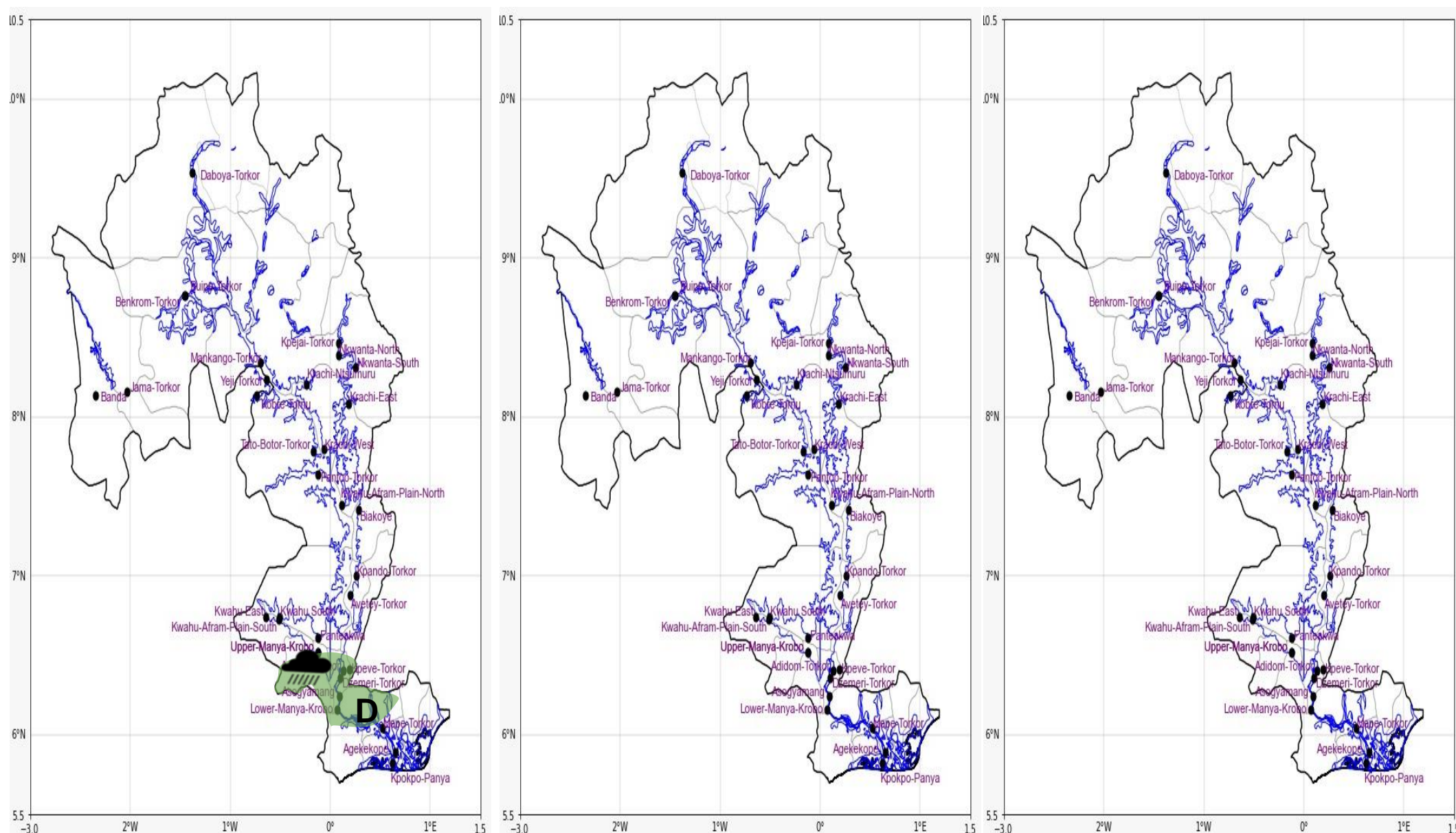


INLAND WATER IMPACT-BASED FORECAST

WEATHER SUMMARY

Periods of sunshine are expected over the lake and its surroundings at the start of the forecast duration, continuing through the afternoon hours, with a 40% likelihood of rain in a few areas of the southern sector. Partly cloudy weather conditions are expected across the lake's sectors in the evening.

| AFTERNOON (27/10/2025) | EVENING (27/10/2025) | MORNING (28/10/2025) |
|------------------------|----------------------|----------------------|
|------------------------|----------------------|----------------------|



| Date |
|-----------------|
| 27/10/2025 |
| Time Issued |
| 10:00 AM |
| Valid From |
| 12:00 PM |
| Nowcasting Risk |
| Take Action |
| Be aware |
| Low risk |
| No risk |

| Likelihood ↑ | Weather Forecast Risk Table | | |
|--------------|-----------------------------|----------|--------|
| | High (>60%) | G | H |
| | Medium (40%-60%) | D | E |
| | Low (<40%) | A | B |
| | | Low | Medium |
| | | High | |
| | | Impact → | |

| Time | Surface Wind | Visibility | Temperature |
|----------|----------------------|-------------|--------------|
| 12 hours | S/SE 05 Max 20 kt | (5 – 10) km | (23 – 36) °C |
| 24 hours | S/SW 05 Max 20 kt | (5 – 10) km | (22 – 35) °C |