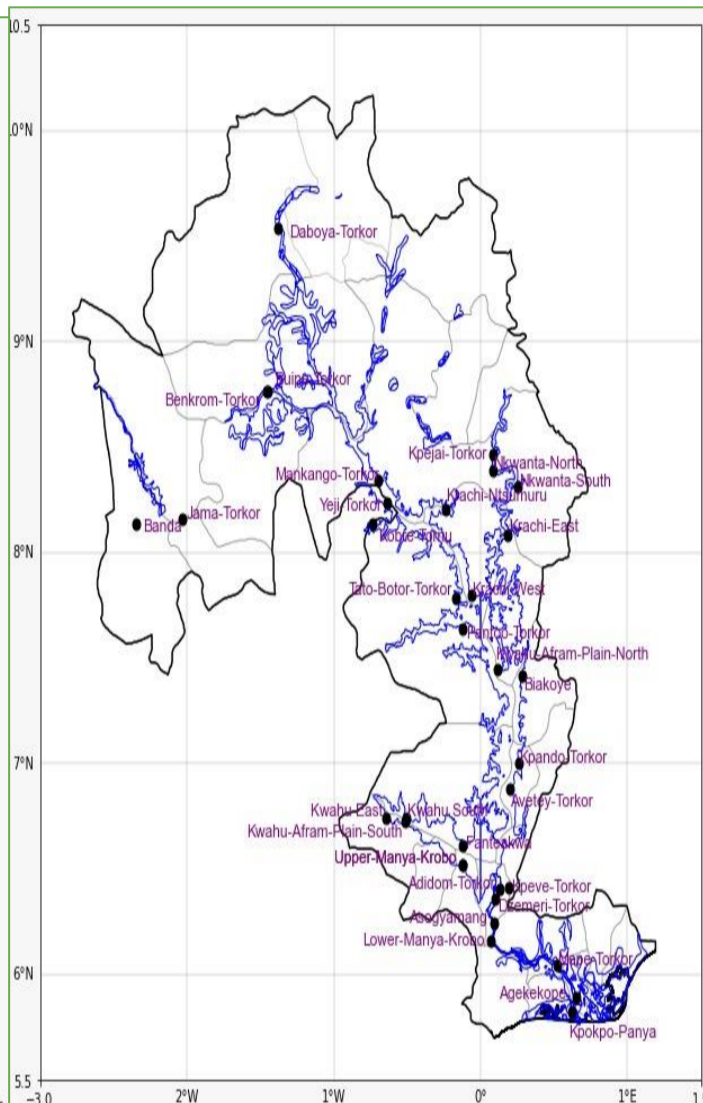
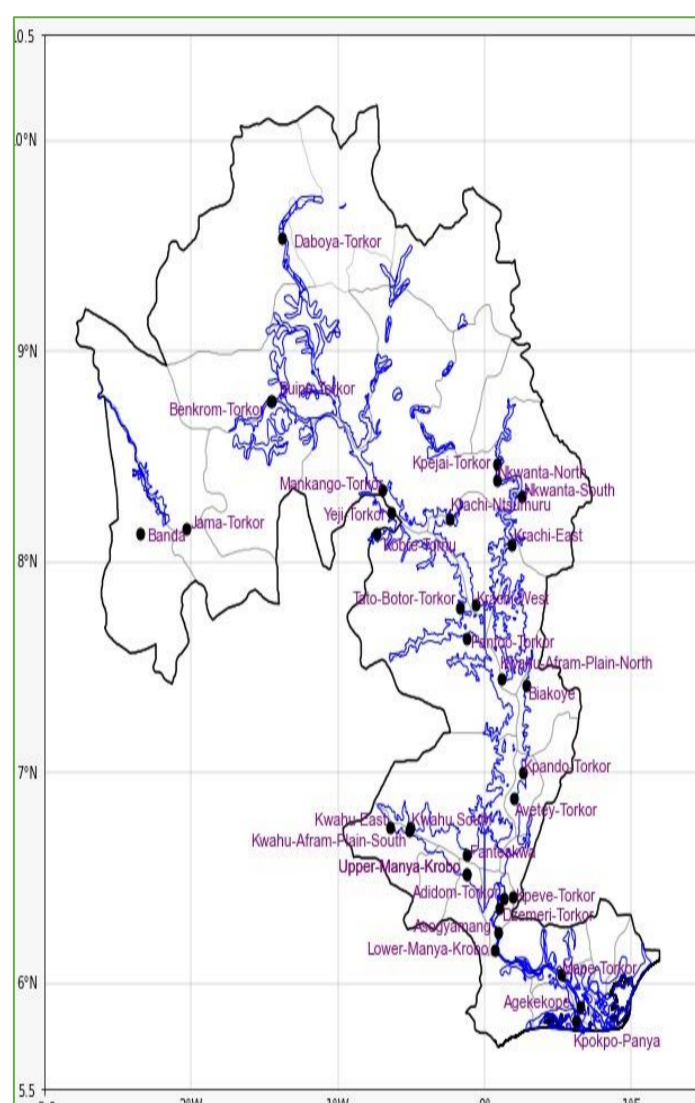
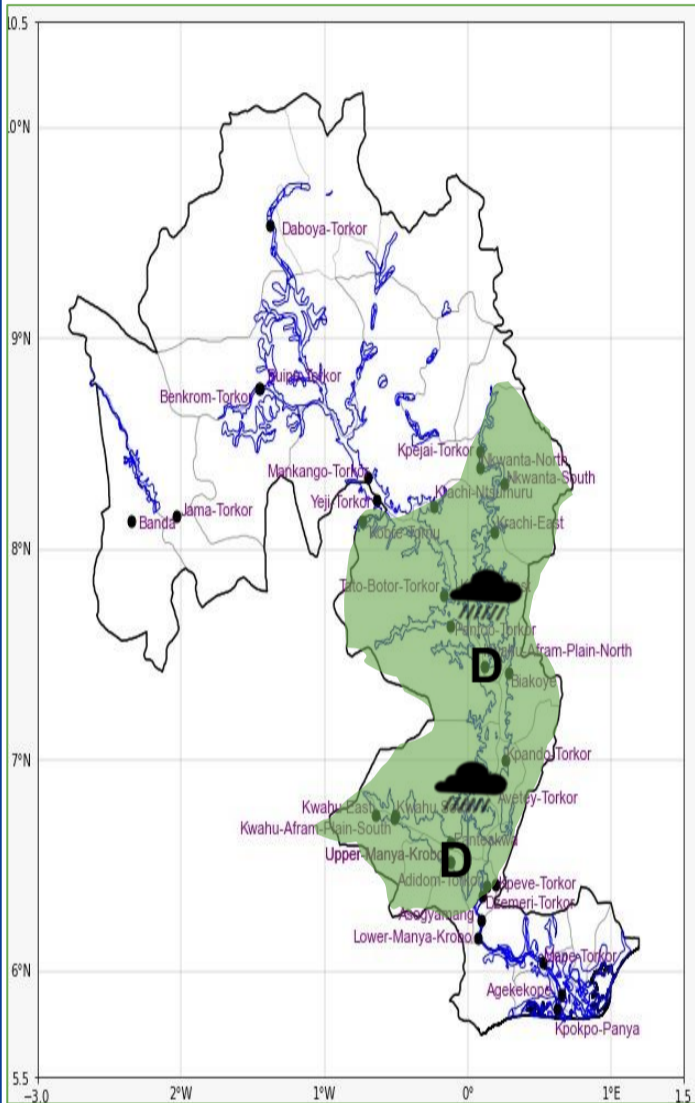


INLAND WATER IMPACT-BASED FORECAST

WEATHER SUMMARY

Variably cloudy weather conditions are expected over the lake area in the evening throughout the forecast period. Cases of isolated light to moderate rains with or without thunderstorms are expected over the southern portions of the lake and its environs in the evening.

EVENING (02/11/2025)	MORNING (03/11/2025)	AFTERNOON (03/11/2025)
----------------------	----------------------	------------------------



Weather Icons

Rain

Wind

Dust

Hail

Date
02/11/2025
Time Issued
4:00 PM
Valid From
06:00 PM
Nowcasting Risk
Take Action
Be aware
Low risk
No risk

Likelihood ↑	Weather Forecast Risk Table			
	High (>60%)	G	H	I
	Medium (40%-60%)	D	E	F
Low (<40%)	A	B	C	
	Low	Medium	High	
	 Impact			

Time	Surface Wind	Visibility	Temperature
12 hours	SE/SW 05 Max 19 kt	(4 – 10) km	(22 – 31) °C
24 hours	S/SW 05 Max 20 kt	(5 – 10) km	(22 – 36) °C