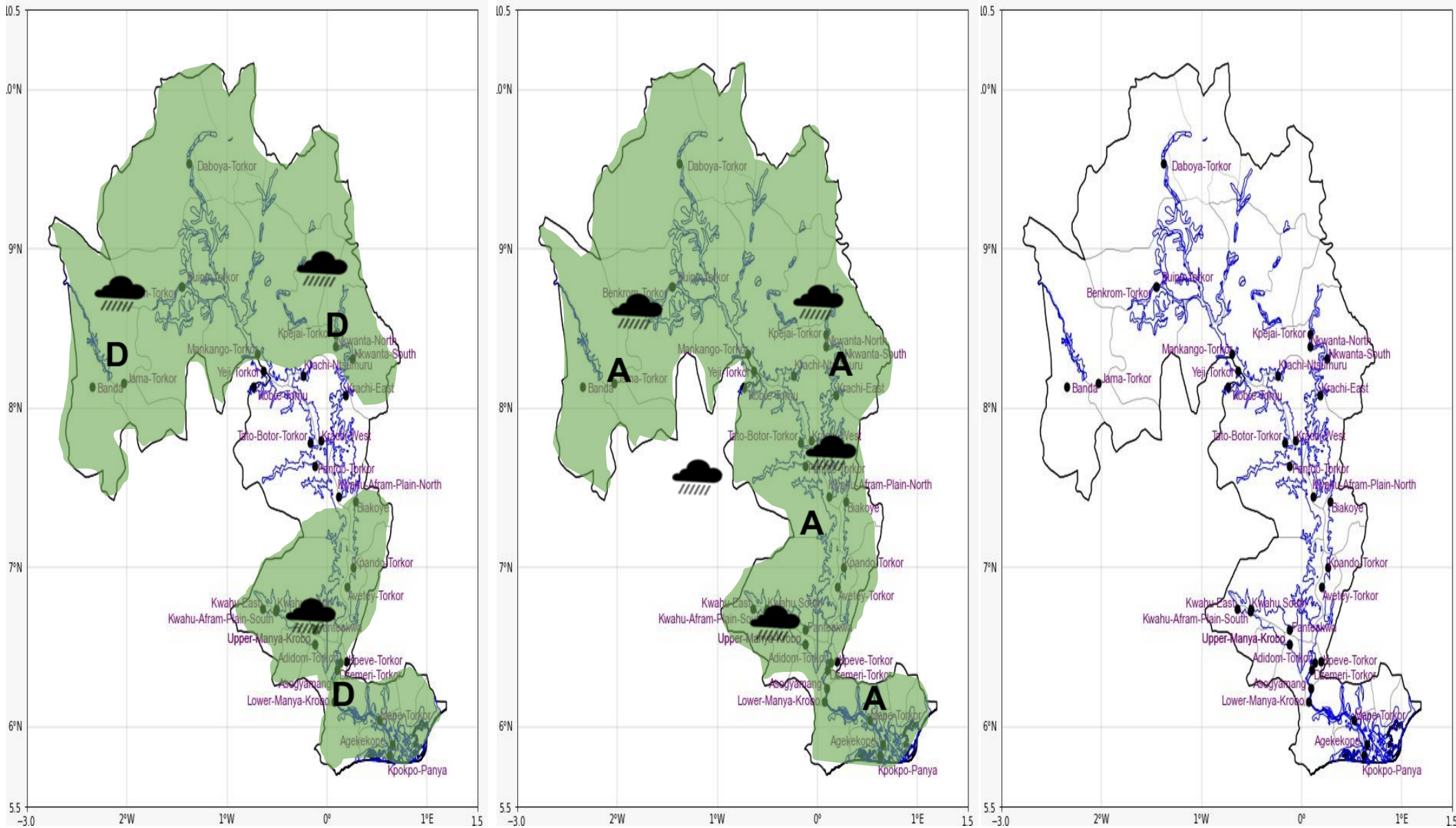




INLAND WATER IMPACT-BASED FORECAST  
WEATHER SUMMARY

Mostly cloudy weather conditions are expected throughout the forecast period. Cases of isolated to scattered rain are expected over most of the lake and its surroundings from this afternoon through to the evening hours.

AFTERNOON (07/11/2025)	EVENING (07/11/2025)	MORNING (08/11/2025)
------------------------	----------------------	----------------------



Date
07/11/2025
Time Issued
10:00 AM
Valid From
12:00 PM
Nowcasting Risk
Take Action
Be aware
Low risk
No risk

Weather Forecast Risk Table				
Likelihood ↑	High (>60%)	G	H	I
	Medium (40%-60%)	D	E	F
	Low (<40%)	A	B	C
		Low	Medium	High
		Impact →		

Time	Surface Wind	Visibility	Temperature
12 hours	S/SW 05 Max 17 kt	(3 – 10) km	(23 – 35) °C
24 hours	S/SW 05 Max 13 kt	(2 – 10) km	(22 – 34) °C