

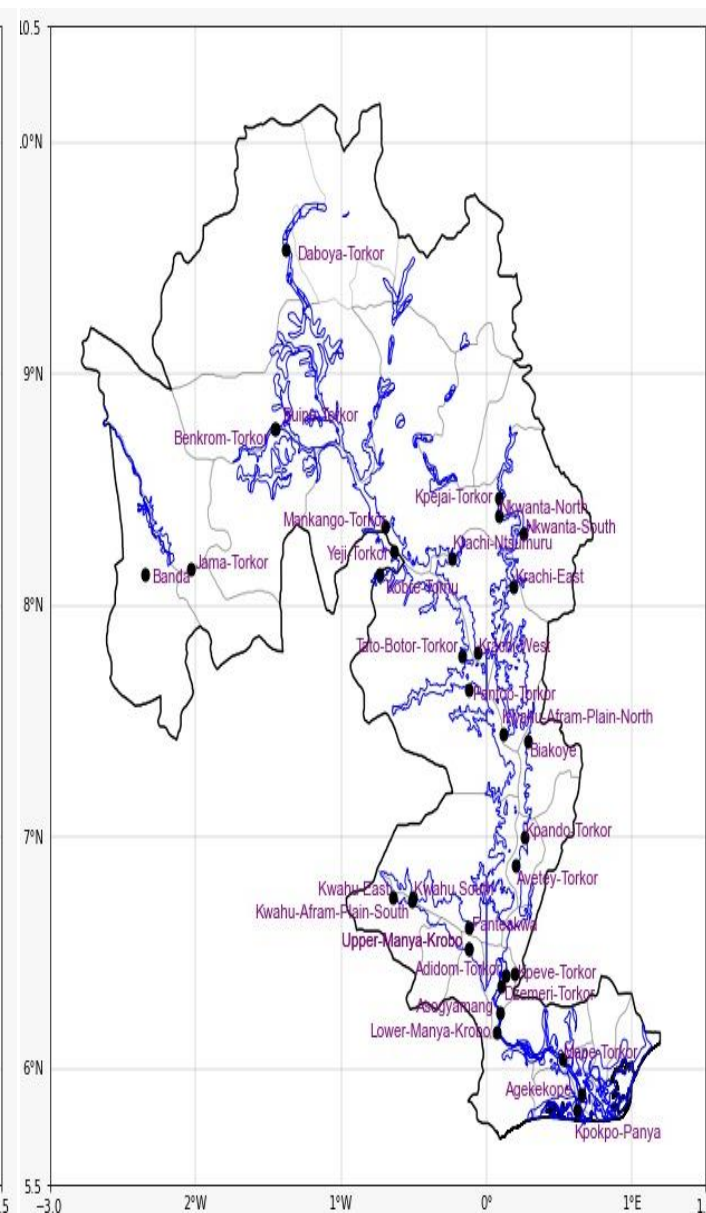
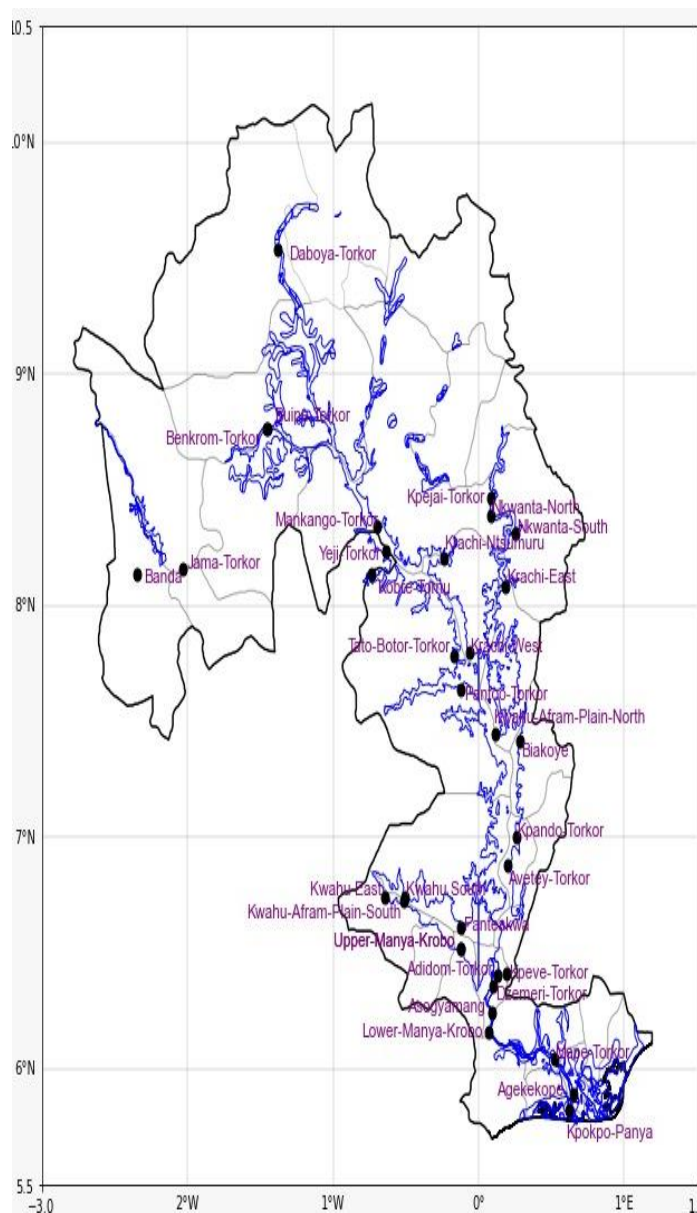
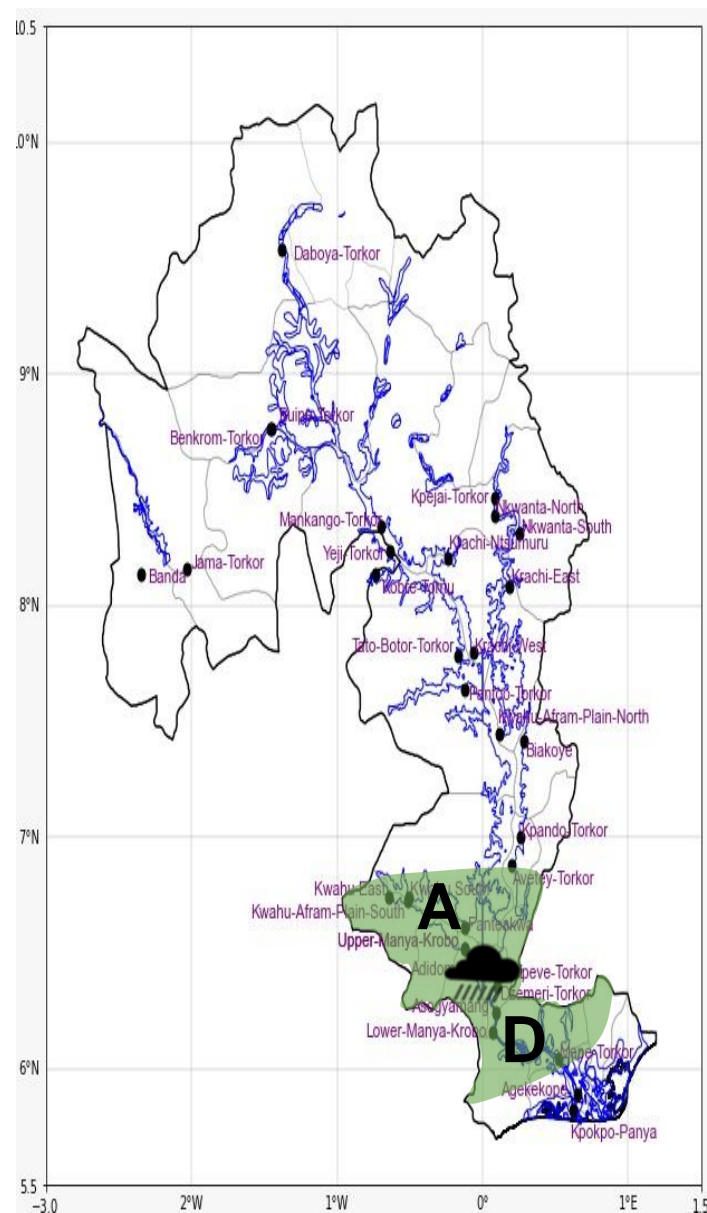


## INLAND WATER IMPACT-BASED FORECAST

## WEATHER SUMMARY

The weather expected over the lake and its surroundings is mostly cloudy conditions with sunny intervals during the afternoon period, however, there is a 30-40% likelihood of isolated thunderstorms and rain over areas within the southern sector. Variable clouds will be experienced across the sectors of the lake in the evening.

AFTERNOON (14/11/2025)	EVENING (14/11/2025)	MORNING (15/11/2025)
------------------------	----------------------	----------------------



<b>Date</b>
14/11/2025
<b>Time Issued</b>
10:00 AM
<b>Valid From</b>
12:00 PM
<b>Nowcasting Risk</b>
<b>Take Action</b>
<b>Be aware</b>
<b>Low risk</b>
<b>No risk</b>

**Weather Forecast Risk Table**

<b>Likelihood</b> ↑	<b>High (&gt;60%)</b>	<b>G</b>	<b>H</b>	<b>I</b>
	<b>Medium (40%-60%)</b>	<b>D</b>	<b>E</b>	<b>F</b>
	<b>Low (&lt;40%)</b>	<b>A</b>	<b>B</b>	<b>C</b>
		<b>Low</b>	<b>Medium</b>	<b>High</b>

↑ **Impact** →

Time	Surface Wind	Visibility	Temperature
12 hours	S/SE 05 Max 17 kt	(5 – 10) km	(22 – 35) °C
24 hours	SE/SW 05 Max 12 kt	(5 – 10) km	(22 – 36) °C