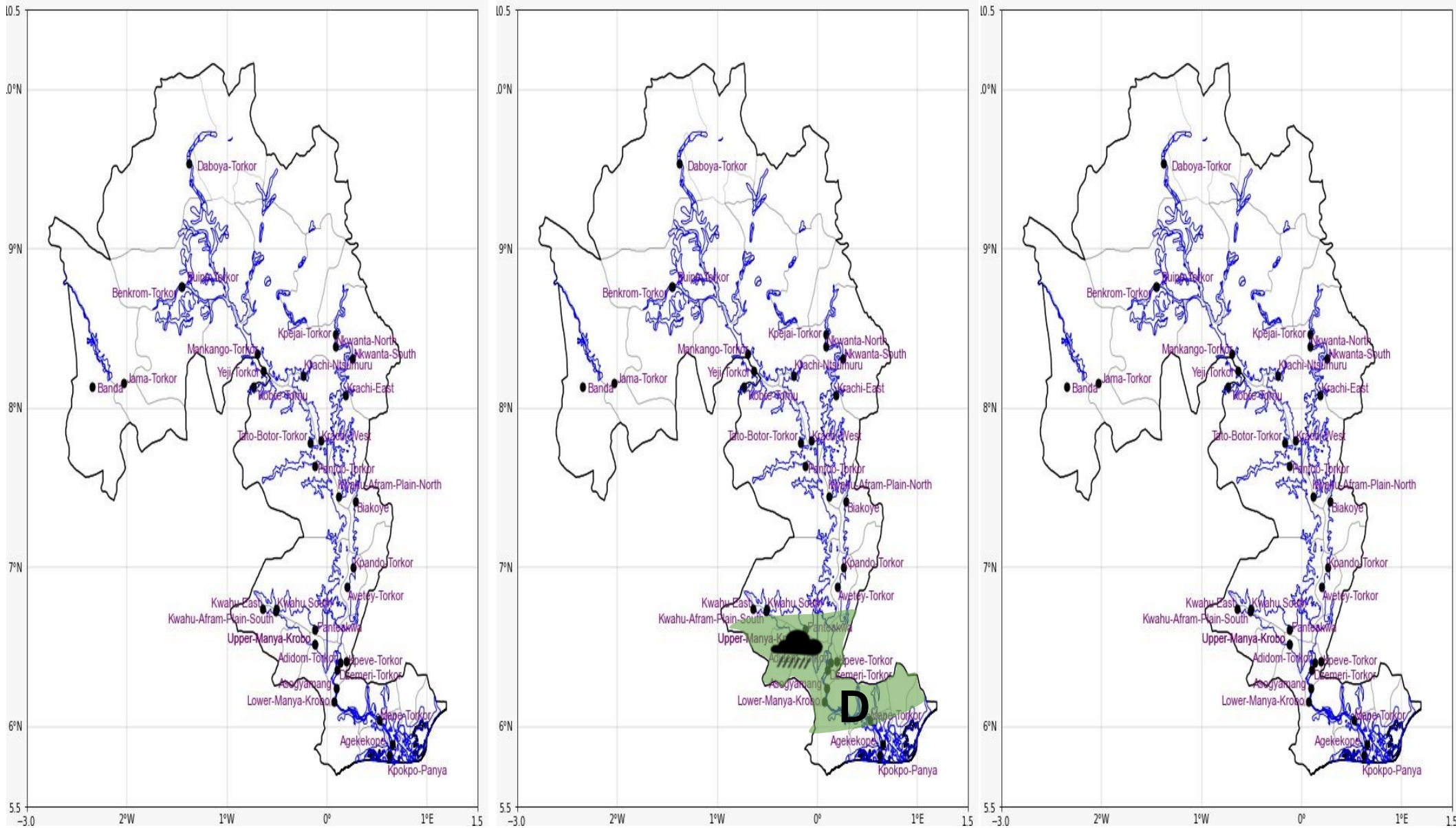




INLAND WATER IMPACT-BASED FORECAST
WEATHER SUMMARY

The lake and its surrounding areas will experience sunny intervals during the afternoon hours. However, there is variable cloud cover across the lake and its vicinity during the evening hours, with a 60% probability of slight to moderate rain and thunderstorms over some parts of the southern sector between late afternoon and evening.

AFTERNOON (15/11/2025)	EVENING (15/11/2025)	MORNING (16/11/2025)
------------------------	----------------------	----------------------



Date
15/11/2025
Time Issued
10:00 AM
Valid From
12:00 PM
Nowcasting Risk
Take Action
Be aware
Low risk
No risk

Likelihood	Weather Forecast Risk Table		
	High (>60%)	G	H
	Medium (40%-60%)	D	E
	Low (<40%)	A	B
		Low	Medium
		Impact	

Time	Surface Wind	Visibility	Temperature
12 hours	S/SE 05 Max 17 kt	(5 – 10) km	(22 – 35) °C
24 hours	SE/SW 05 Max 12 kt	(5 – 10) km	(22 – 36) °C