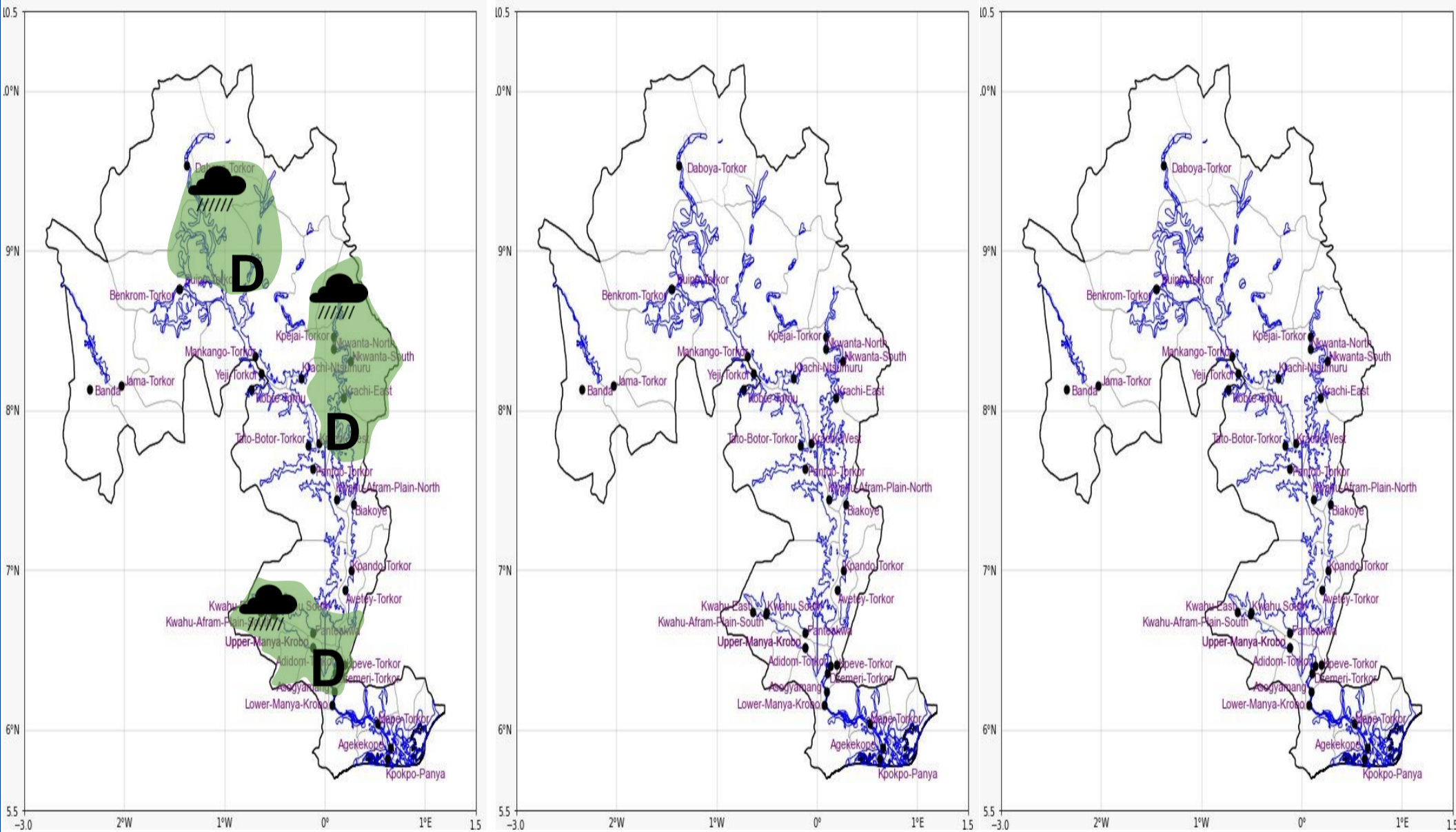




INLAND WATER IMPACT-BASED FORECAST  
WEATHER SUMMARY

Mostly cloudy weather conditions at the start of the forecast period through to the afternoon hours. However, isolated cases of slight rains will be experienced over a few areas of the lake in the morning hours.

MORNING (08/10/2024)	AFTERNOON (08/10/2024)	EVENING (08/10/2024)
----------------------	------------------------	----------------------



Date
08/10/2024
Time Issued
4:00 AM
Valid From
6:00 AM
Nowcasting Risk
Take Action
Be aware
Low risk
No risk

Weather Forecast Risk Table				
Likelihood ↑	High (>60%)	G	H	I
	Medium (40%-60%)	D	E	F
	Low (<40%)	A	B	C
		Low	Medium	High
		Impact →		

Time	Surface Wind	Visibility	Temperature
24 hours	N/NW 05 Max 15 kt	(4 – 10) km	(22 – 32) °C
48 hours	S/SE 05 Max 20 kt	(4 – 10) km	(22 – 32) °C