

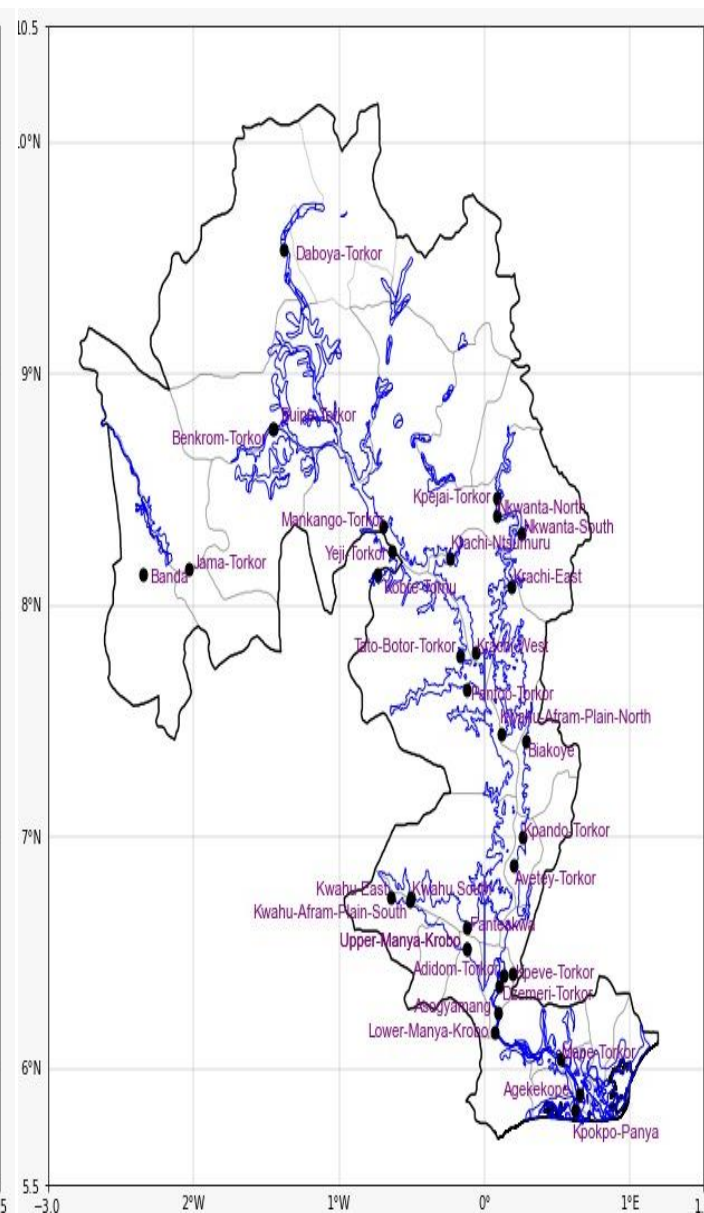
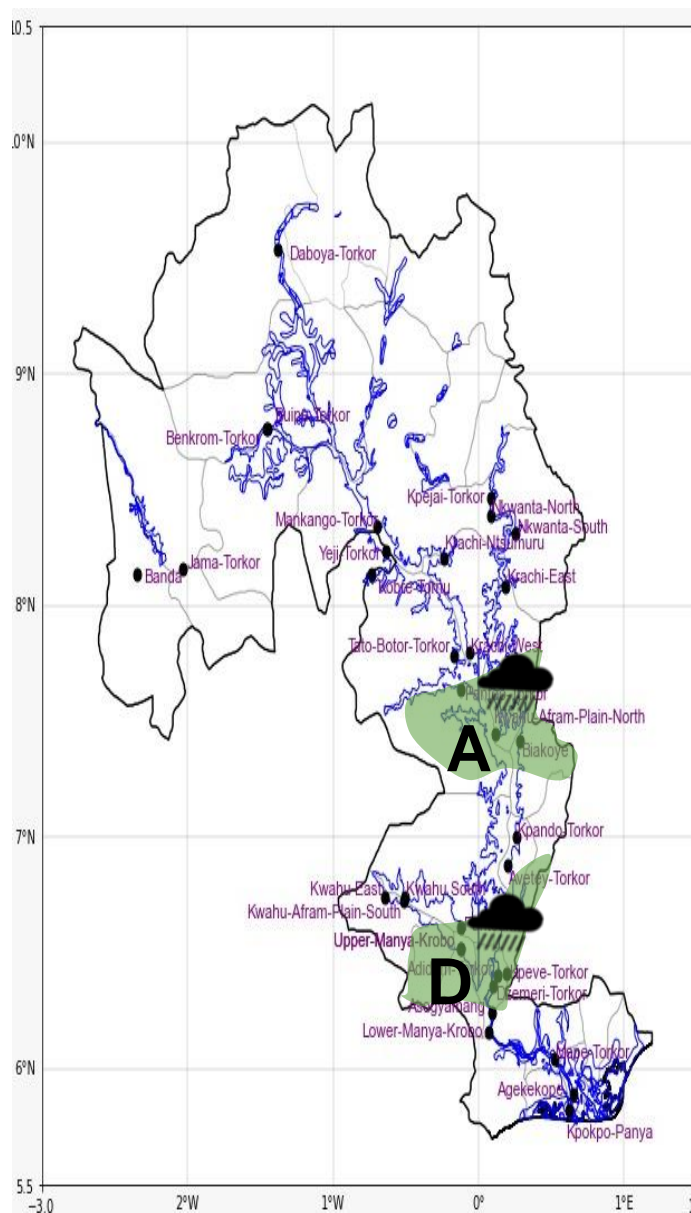
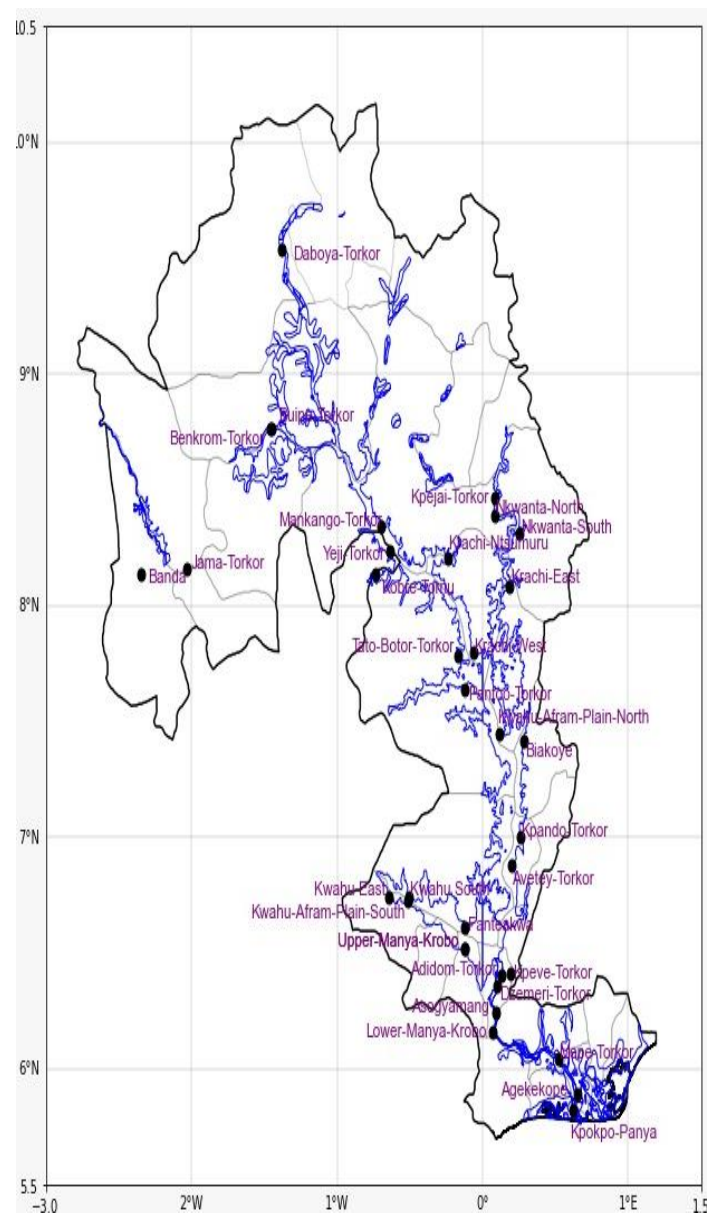


INLAND WATER IMPACT-BASED FORECAST

WEATHER SUMMARY

The lake and its nearby regions will see intervals of sunshine throughout the afternoon. Nonetheless, there is inconsistent cloud cover over the lake and surrounding areas in the evening, with a 40% chance of light to moderate rain and thunderstorms affecting certain areas of the southern region from late afternoon to evening.

AFTERNOON (17/11/2025)	EVENING (17/11/2025)	MORNING (18/11/2025)
------------------------	----------------------	----------------------



Date
17/11/2025
Time Issued
10:00 AM
Valid From
12:00 PM
Nowcasting Risk
Take Action
Be aware
Low risk
No risk

Weather Forecast Risk Table				
Likelihood ↑	High (>60%)	G	H	I
	Medium (40%-60%)	D	E	F
	Low (<40%)	A	B	C
		Low	Medium	High
		Impact →		

Time	Surface Wind	Visibility	Temperature
12 hours	S/SE 05 Max 14 kt	(5 – 10) km	(22 – 35) °C
24 hours	S/SW 05 Max 15 kt	(5 – 10) km	(22 – 36) °C