

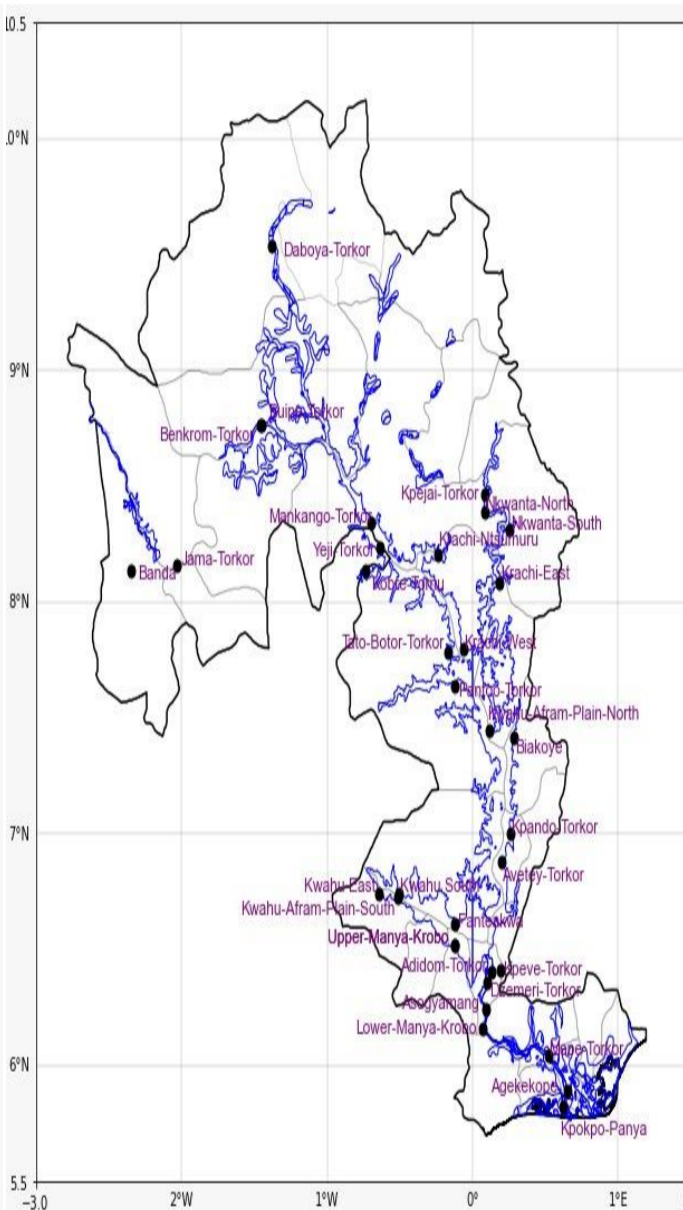
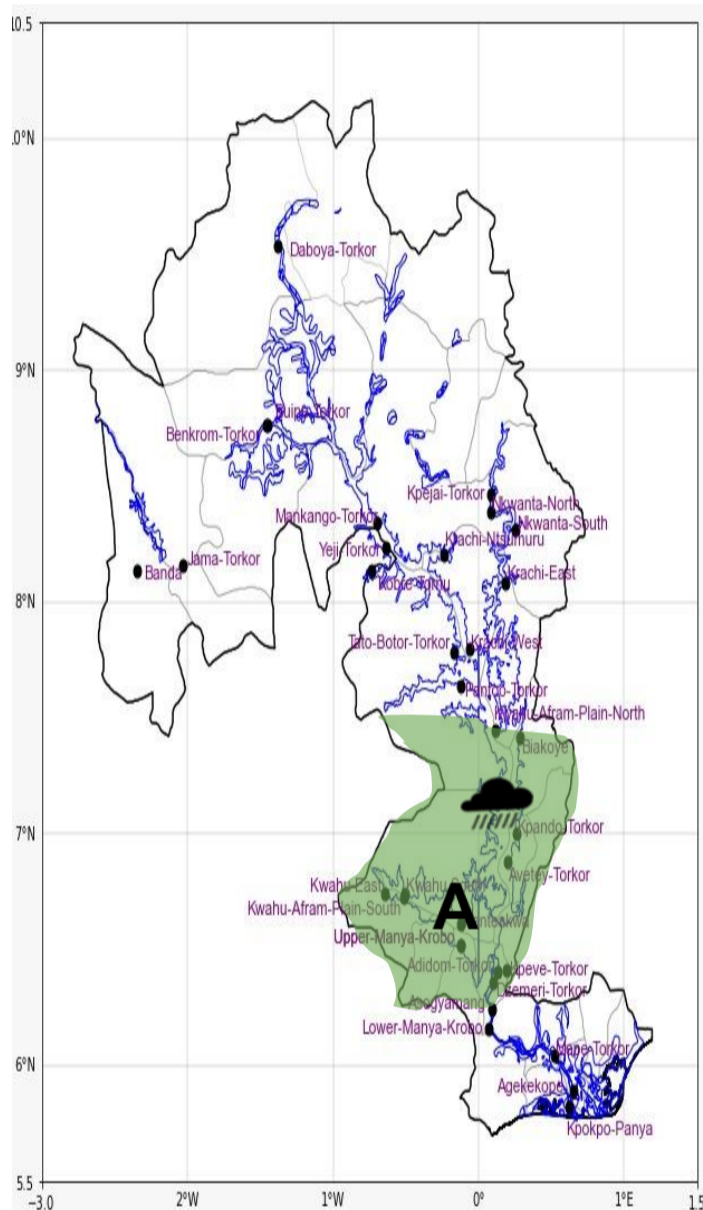
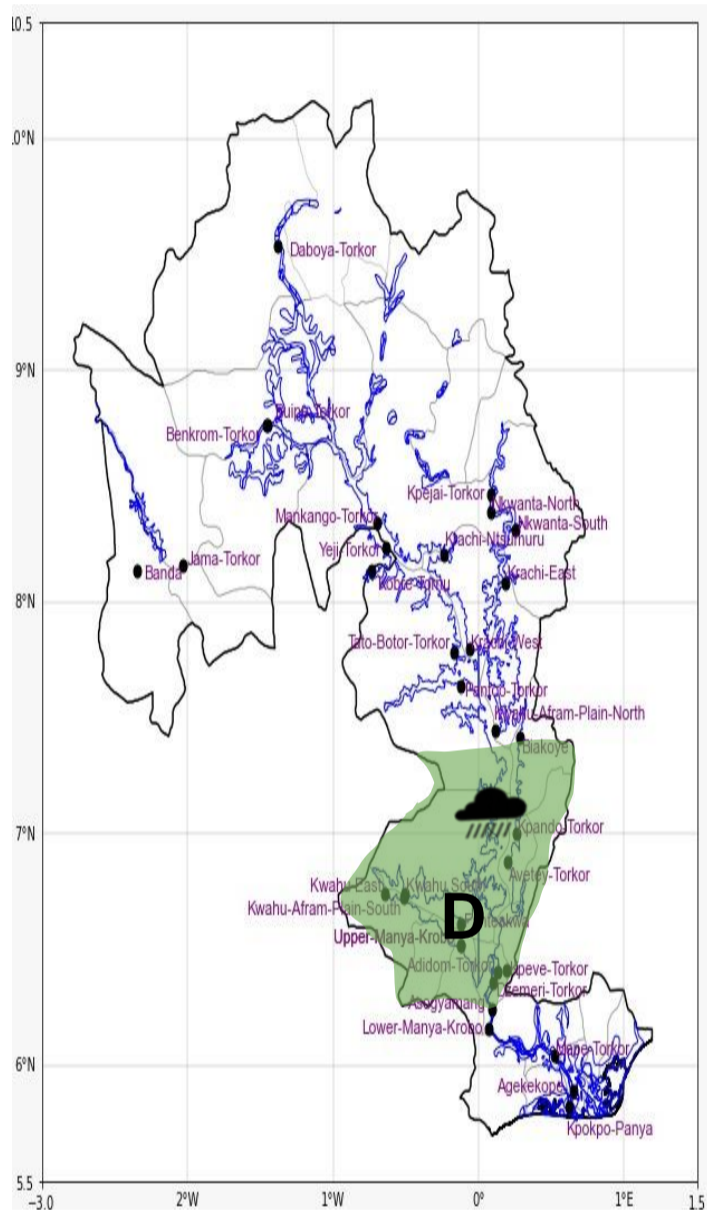


INLAND WATER IMPACT-BASED FORECAST

WEATHER SUMMARY

Bright weather with sunny intervals is expected across the lake and its environs this afternoon. However, from the late afternoon into the evening, there is a 40% chance of isolated rain across the lake and its surroundings.

AFTERNOON (20/11/2025)	EVENING (20/11/2025)	MORNING (21/11/2025)
------------------------	----------------------	----------------------



Date
20/11/2025
Time Issued
10:00 AM
Valid From
12:00 PM
Nowcasting Risk
Take Action
Be aware
Low risk
No risk

Likelihood ↑	Weather Forecast Risk Table			
	High (>60%)	G	H	I
	Medium (40%-60%)	D	E	F
Low (<40%)	A	B	C	
	Low	Medium	High	
	Impact →			

Time	Surface Wind	Visibility	Temperature
12 hours	E/SE 05 Max 15 kt	(5 – 10) km	(22 – 35) °C
24 hours	S/SE 05 Max 15 kt	(5 – 10) km	(22 – 36) °C