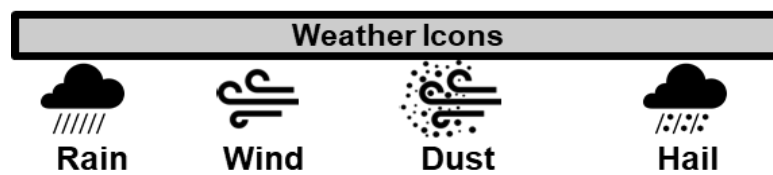
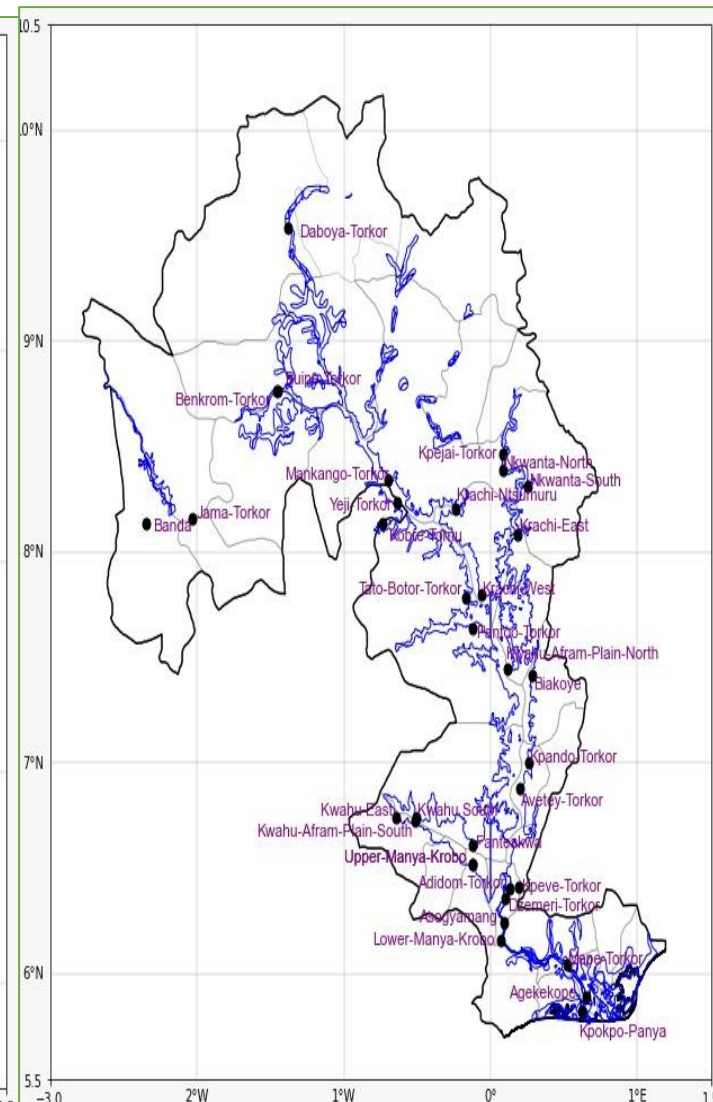
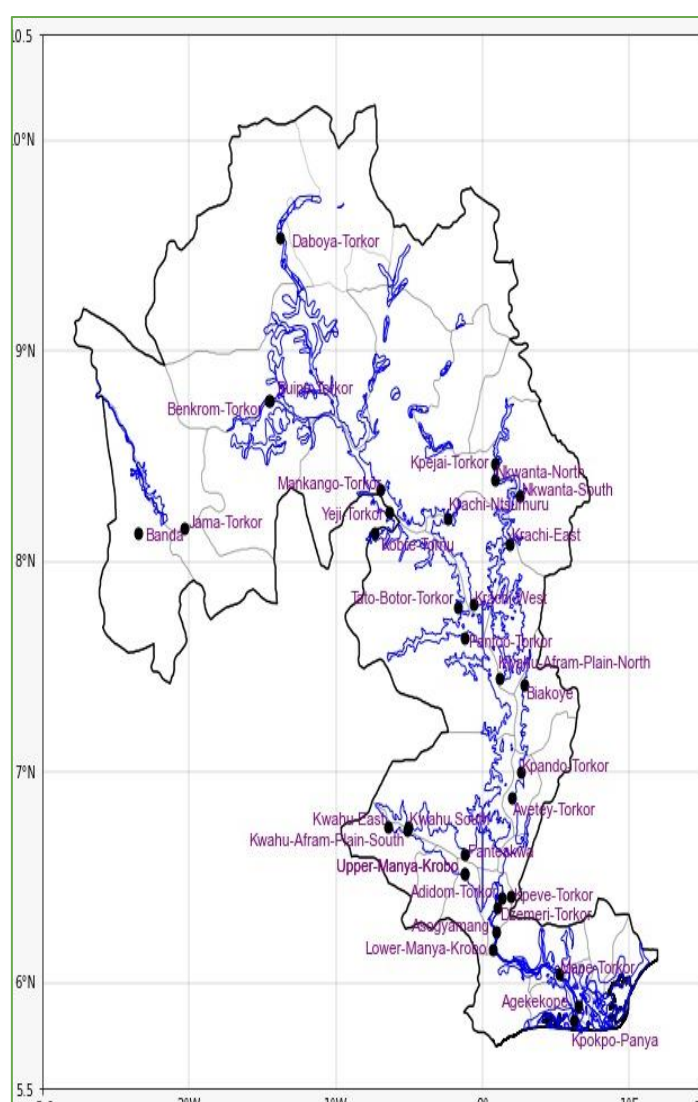
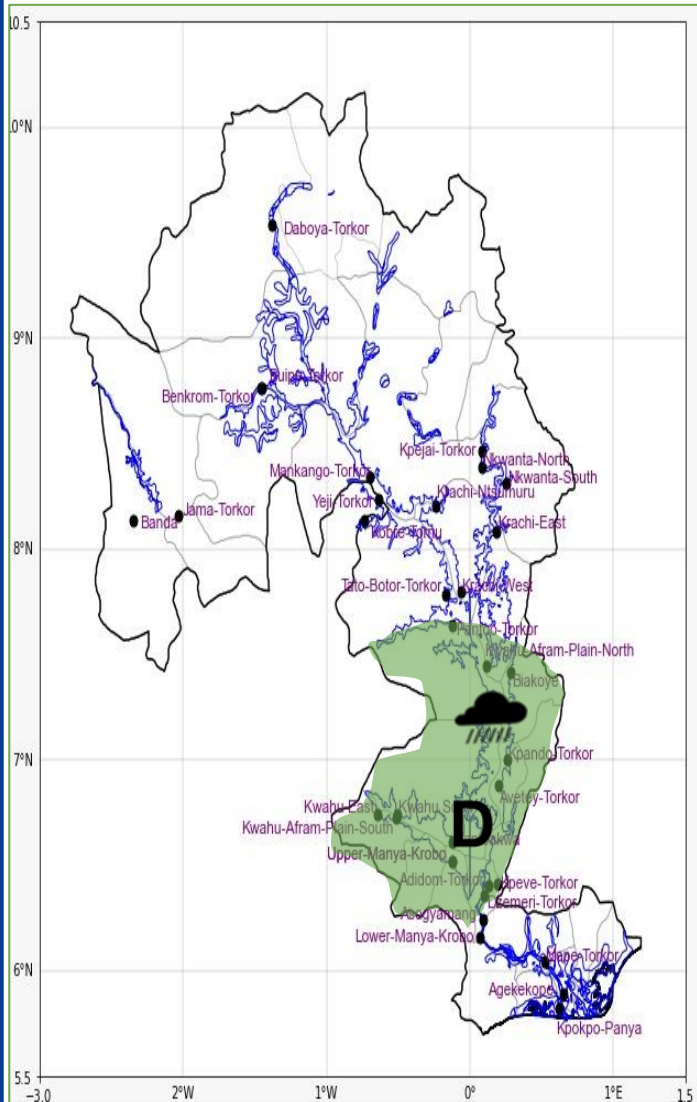


INLAND WATER IMPACT-BASED FORECAST

WEATHER SUMMARY

Variably cloudy weather conditions are expected throughout the forecast period. Nonetheless, isolated light rains are expected across the lake and its environs this evening.

EVENING (20/11/2025)	MORNING (21/11/2025)	AFTERNOON (21/11/2025)
----------------------	----------------------	------------------------



Date
20/11/2025
Time Issued
4:00 PM
Valid From
06:00 PM
Nowcasting Risk
Low risk
No risk

Weather Forecast Risk Table			
Likelihood ↑	High (>60%)	G	H
	Medium (40%-60%)	D	E
	Low (<40%)	A	B
		Low	Medium
		Impact →	

Time	Surface Wind	Visibility	Temperature
12 hours	S/SW 05 Max 18 kt	(5 – 10) km	(21 – 32) °C
24 hours	S/SE 05 Max 15 kt	(5 – 10) km	(22 – 33) °C