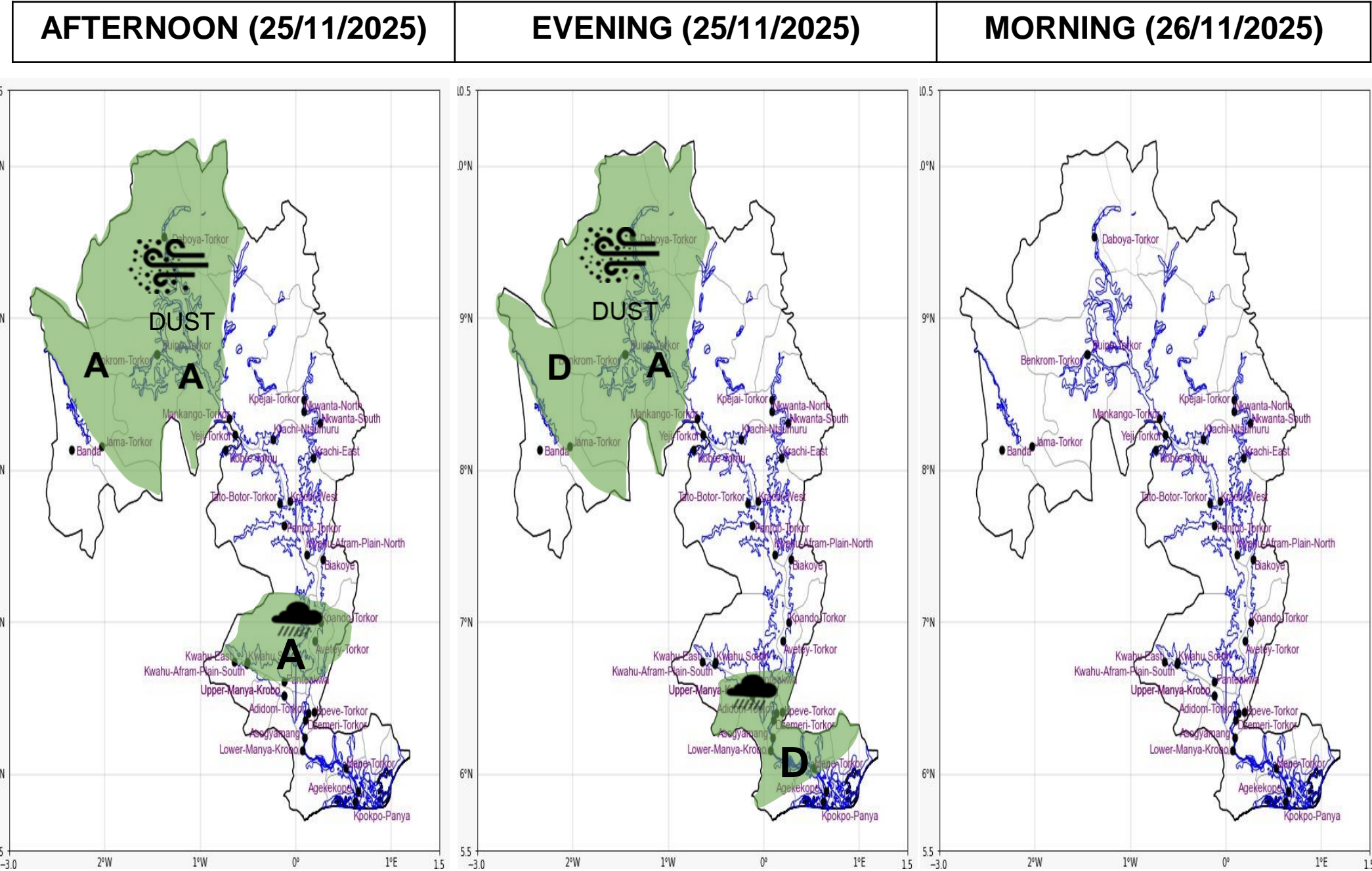




INLAND WATER IMPACT-BASED FORECAST  
WEATHER SUMMARY

Throughout the forecast period, the lake area is expected to experience variable cloudiness, with relatively dry and slightly hazy conditions prevailing over the northwestern sector. From late afternoon into the evening hours, enhanced convective activity is anticipated, resulting in isolated thunderstorms and rainfall of varying intensities across the southern part of the lake and its surrounding communities.



Date
25/11/2025
Time Issued
10:00 AM
Valid From
12:00 PM
Nowcasting Risk
Take Action
Be aware
Low risk
No risk

Likelihood	Weather Forecast Risk Table		
	High (>60%)	G	H
	Medium (40%-60%)	D	E
	Low (<40%)	A	B
		Low	Medium
		Impact	

Time	Surface Wind	Visibility	Temperature
12 hours	E/SE 05 Max 17 kt	(5 – 10) km	(27 – 36) °C
24 hours	SE/SW 05 Max 17 kt	(3 – 10) km	(21 – 34) °C