

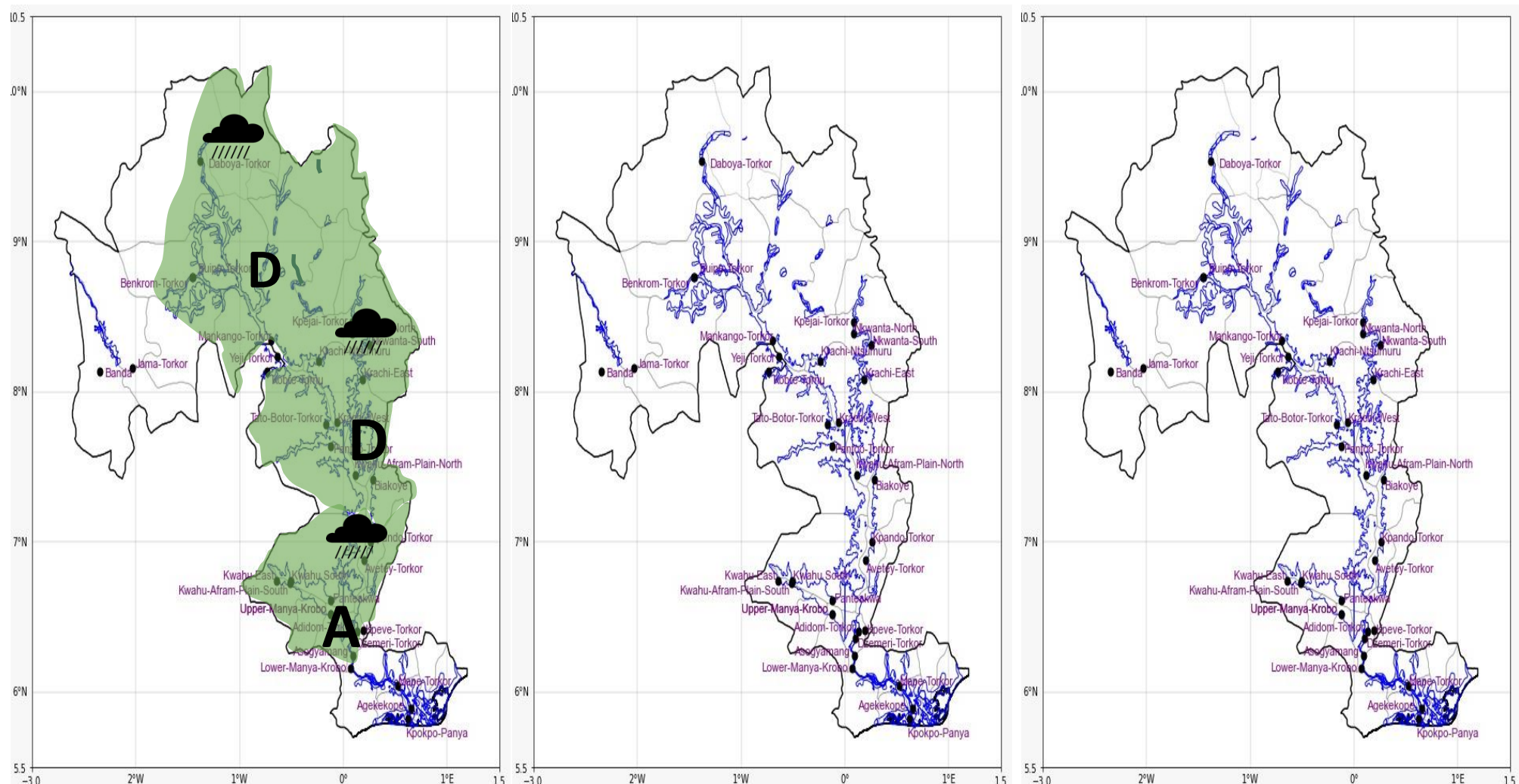


## INLAND WATER IMPACT-BASED FORECAST

## WEATHER SUMMARY

Cloudy weather conditions will prevail across the lake and surrounding communities from the start of the forecast period to the evening with brief sunny breaks over a few areas in the afternoon. The cloudiness is expected to produce thundery activities and rains in the middle sector and some parts of the northern and southern sectors, later in the afternoon into the evening.

AFTERNOON (08/10/2024)	EVENING 08/10/2024)	MORNING (09/10/2024)
------------------------	---------------------	----------------------



<b>Date</b>
08/10/2024
<b>Time Issued</b>
10:00 AM
<b>Valid From</b>
12:00 PM
<b>Nowcasting Risk</b>
<b>Take Action</b>
<b>Be aware</b>
<b>Low risk</b>
<b>No risk</b>

A horizontal bar with a grey background and a black border, labeled "Weather Icons" in the center. Below the bar are four weather icons: a cloud with rain (Rain), a wind symbol (Wind), a cloud with dust particles (Dust), and a cloud with hail (Hail).

Likelihood

↑

Weather Forecast Risk Table			
High (>60%)	G	H	I
Medium (40%-60%)	D	E	F
Low (<40%)	A	B	C
	Low	Medium	High
	→ Impact		

Time	Surface Wind	Visibility	Temperature
24 hours	S/SE 05 Max 18kt	(5 – 10) km	(22 – 32) °C
48 hours	S/SE 05 Max 17kt	(5 – 10) km	(22 – 33) °C