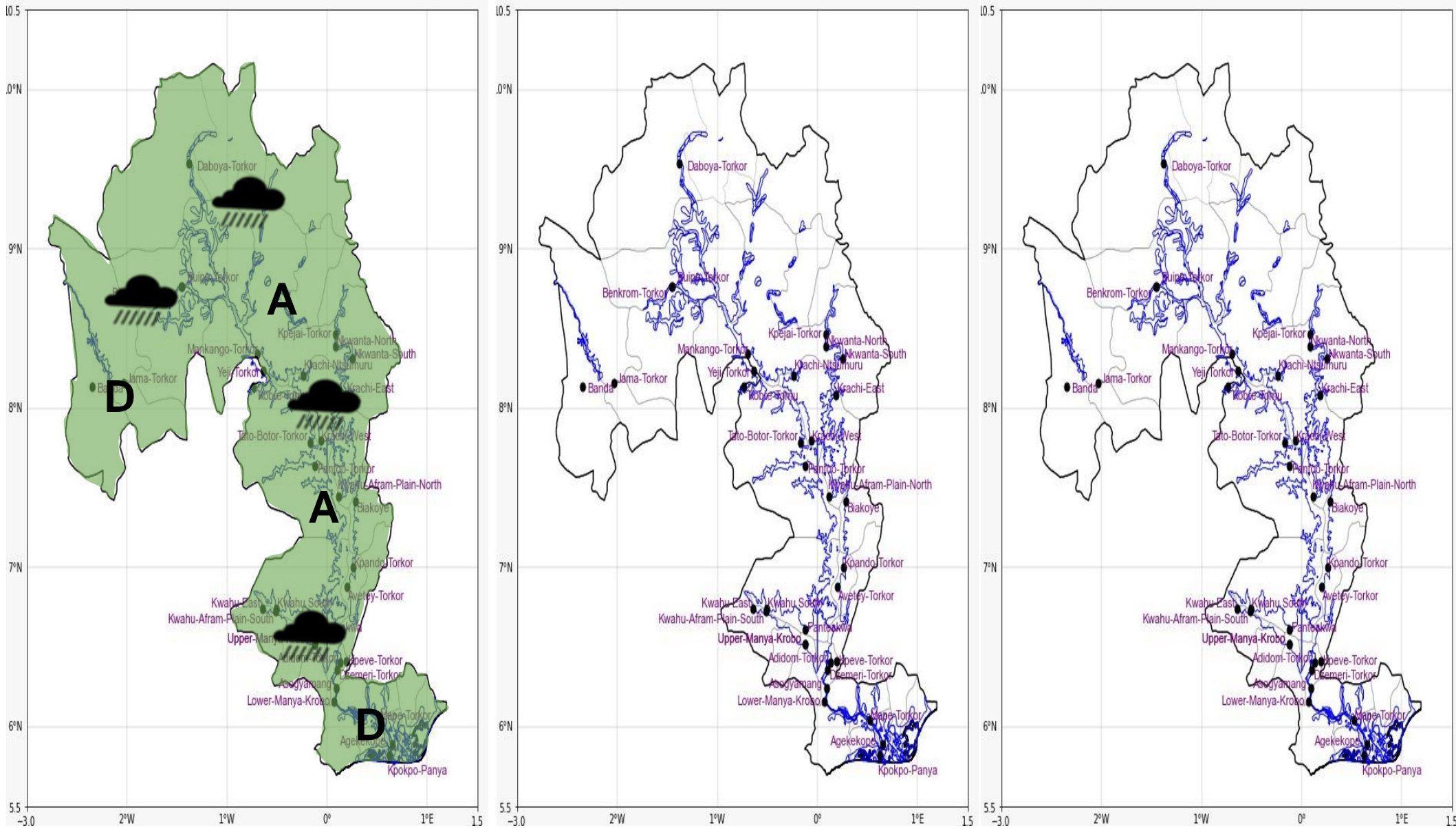




INLAND WATER IMPACT-BASED FORECAST
WEATHER SUMMARY

Throughout the forecast, the lake and the nearby communities will see a range of cloudy conditions. However, between the afternoon and evening hours, there is a 60% chance of intermittent light to moderate rain and thunderstorms throughout the lake's sectors.

AFTERNOON (29/11/2025)	EVENING (29/11/2025)	MORNING (30/11/2025)
------------------------	----------------------	----------------------



Date
29/11/2025
Time Issued
10:00 AM
Valid From
12:00 PM
Nowcasting Risk
Take Action
Be aware
Low risk
No risk

Likelihood	Weather Forecast Risk Table		
	High (>60%)	G	H
	Medium (40%-60%)	D	E
	Low (<40%)	A	B
		Low	Medium
		Impact	

Time	Surface Wind	Visibility	Temperature
12 hours	S/SE 05 Max 26 kt	(4 – 10) km	(24 – 36) °C
24 hours	S/SW 05 Max 25 kt	(5 – 10) km	(23 – 34) °C