

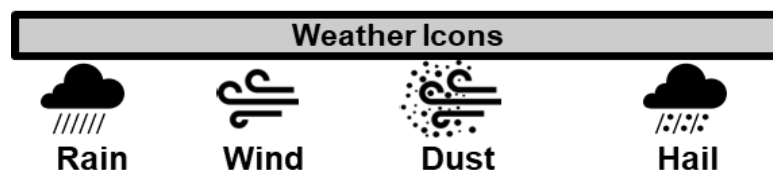
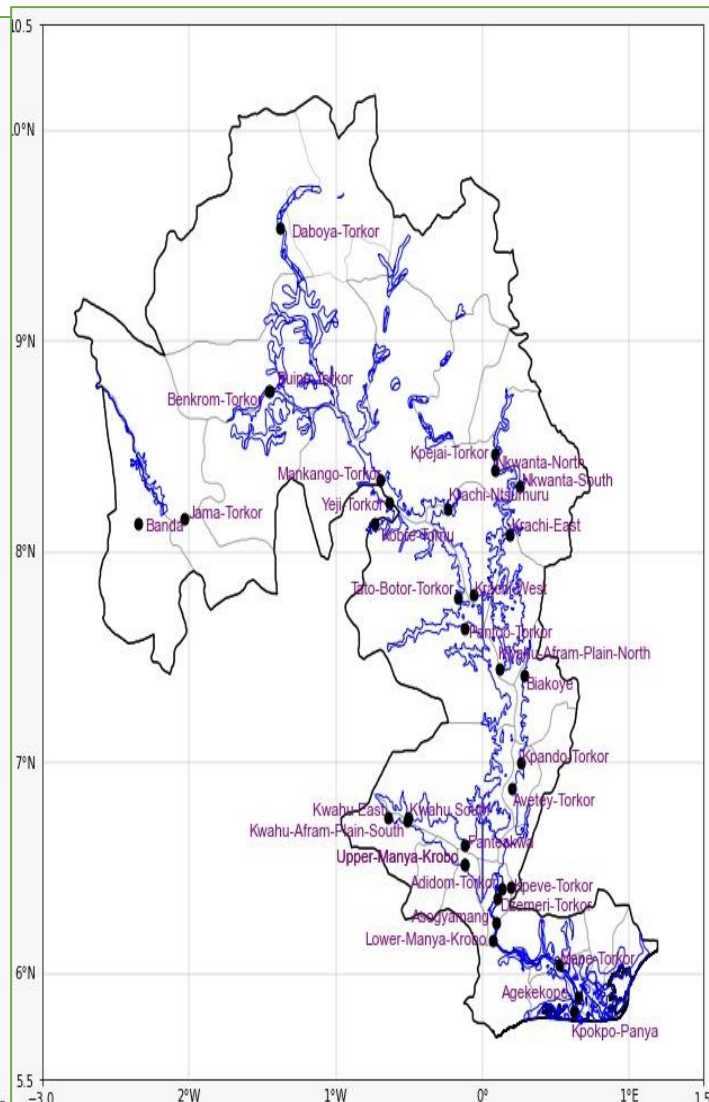
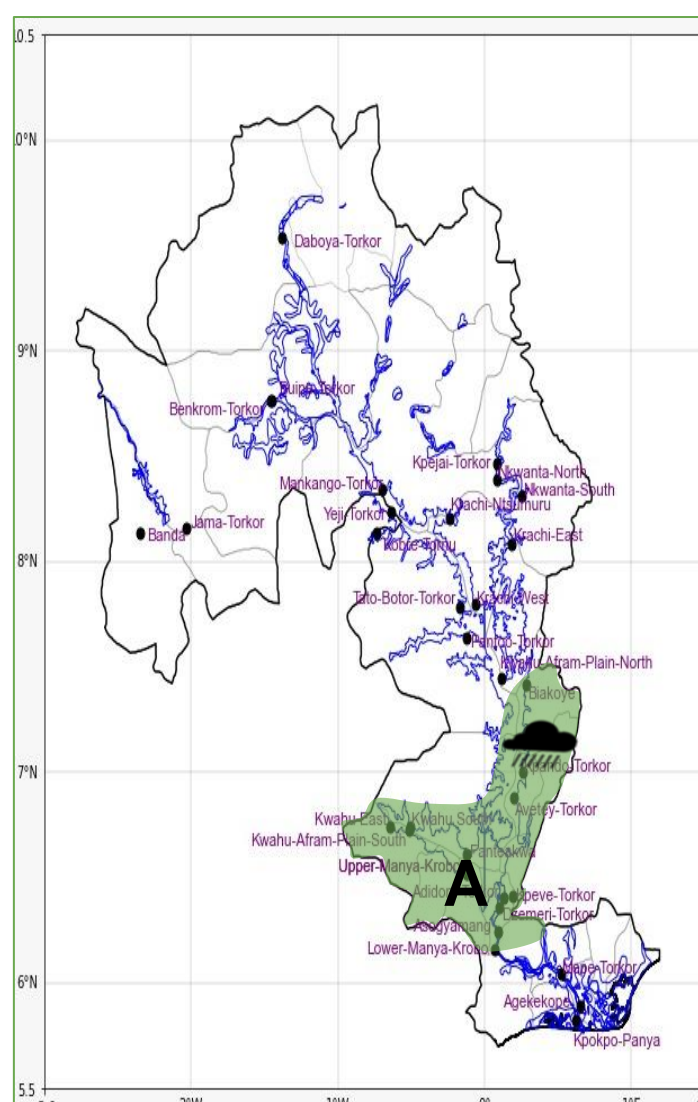
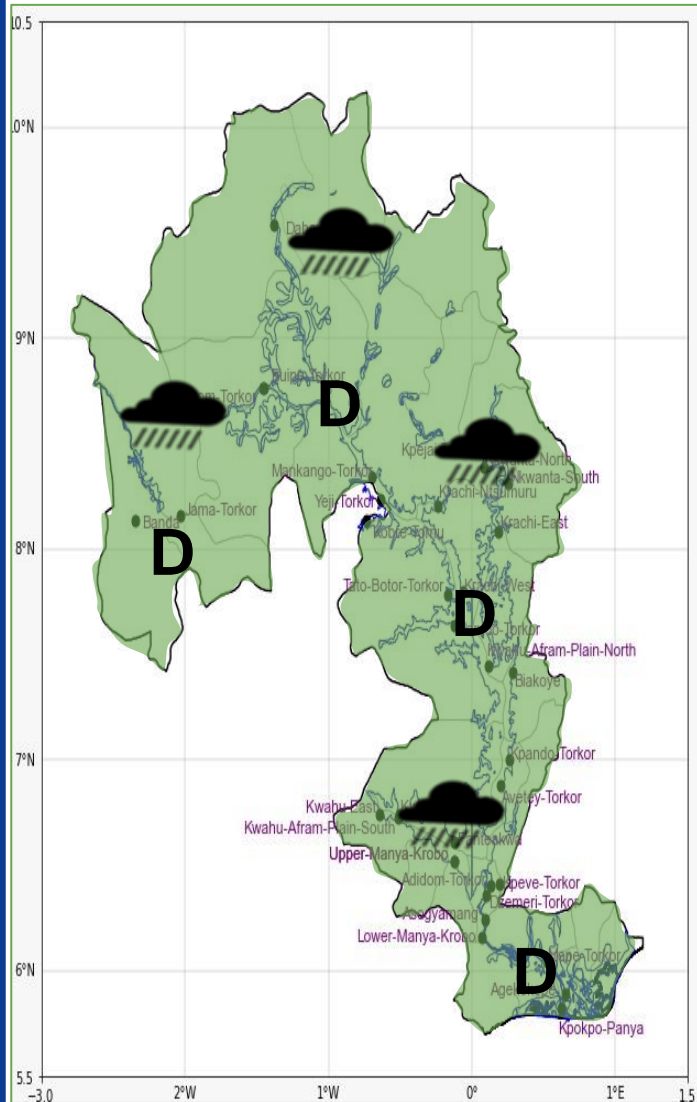


INLAND WATER IMPACT-BASED FORECAST

WEATHER SUMMARY

Variable cloud cover is anticipated to persist over the lake and nearby communities throughout the forecast period. However, isolated thunderstorms with rainfall of varying intensities developing over the lake's enclave are expected to persist and spread across the entire lake area from tonight into the morning hours.

EVENING (01/12/2025)	MORNING (02/12/2025)	AFTERNOON (02/12/2025)
----------------------	----------------------	------------------------



Date
01/12/2025
Time Issued
4:00 PM
Valid From
06:00 PM
Nowcasting Risk
Low risk
No risk

Weather Forecast Risk Table				
Likelihood ↑	High (>60%)	G	H	I
	Medium (40%-60%)	D	E	F
	Low (<40%)	A	B	C
		Low	Medium	High
		Impact →		

Time	Surface Wind	Visibility	Temperature
12 hours	S/SW 05 Max 18 kt	(4 – 10) km	(23 – 32) °C
24 hours	S/SW 05 Max 19 kt	(5 – 10) km	(23 – 35) °C