

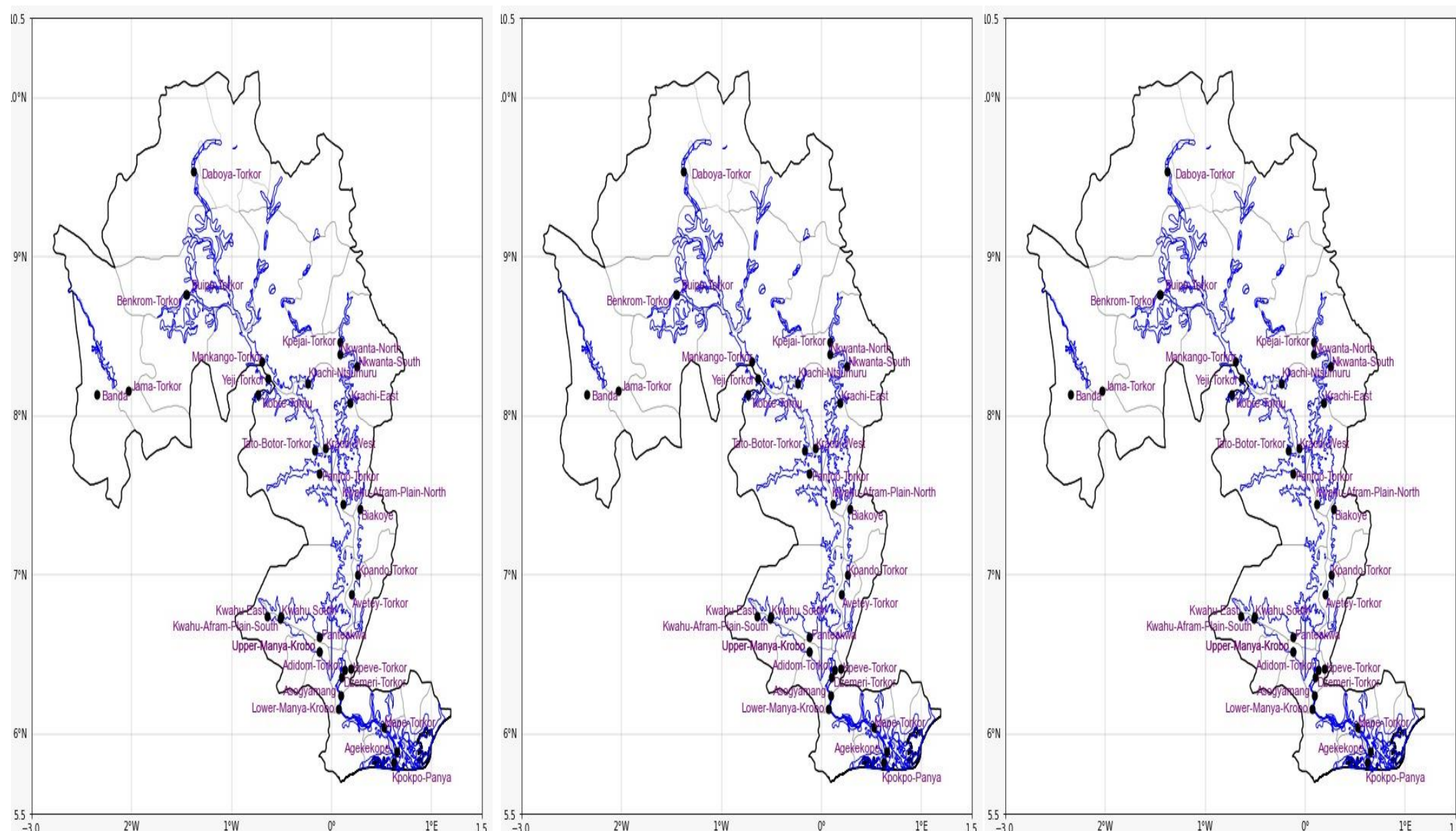


## INLAND WATER IMPACT-BASED FORECAST

### WEATHER SUMMARY

Clouds amidst sunshine periods are expected over the lake and surroundings during the afternoon hours. As the evening approaches, variably cloudy weather conditions will be experienced over most areas within the northern and southern halves of the lake.

AFTERNOON (03/12/2025)	EVENING (03/12/2025)	MORNING (04/12/2025)
------------------------	----------------------	----------------------



Date
03/12/2025
Time Issued
10:00 AM
Valid From
12:00 PM
Nowcasting Risk
Take Action
Be aware
Low risk
No risk

Weather Forecast Risk Table				
Likelihood ↑	High (>60%)	G	H	I
	Medium (40%-60%)	D	E	F
	Low (<40%)	A	B	C
		Low	Medium	High
		Impact →		

Time	Surface Wind	Visibility	Temperature
12 hours	S/SW 05 Max 23 kt	(5 – 10) km	(24 – 35) °C
24 hours	S/SW 05 Max 18 kt	(4 – 10) km	(23 – 34) °C