

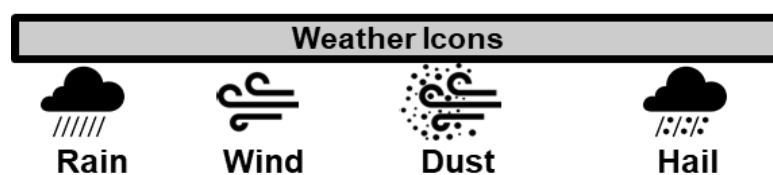
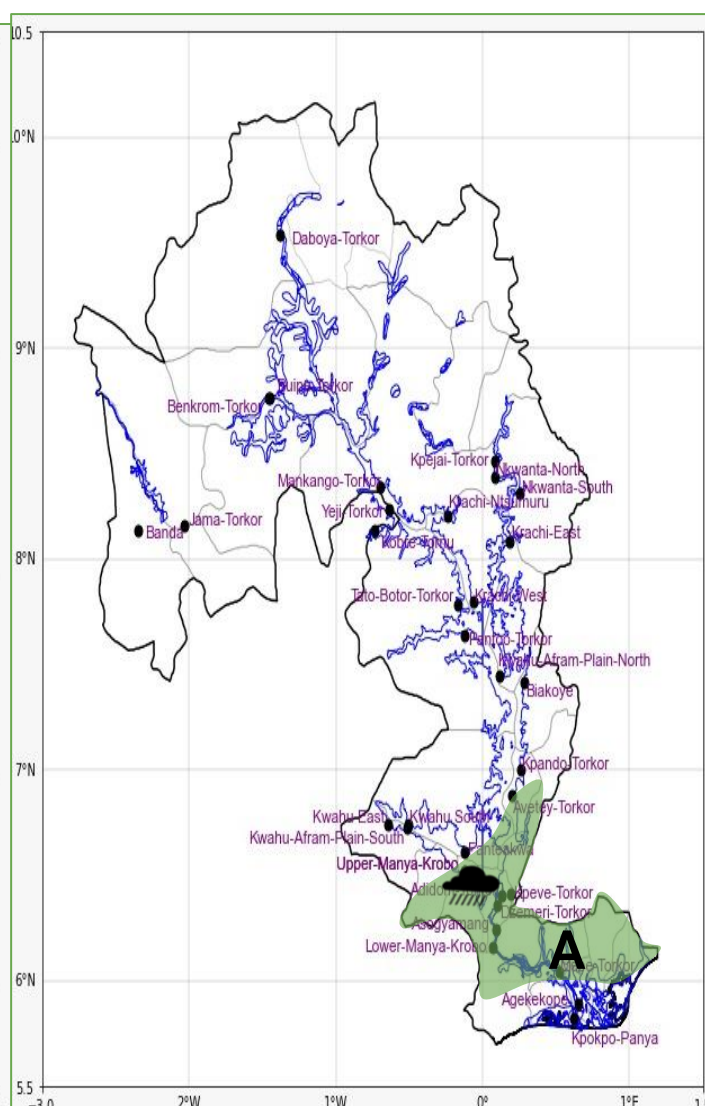
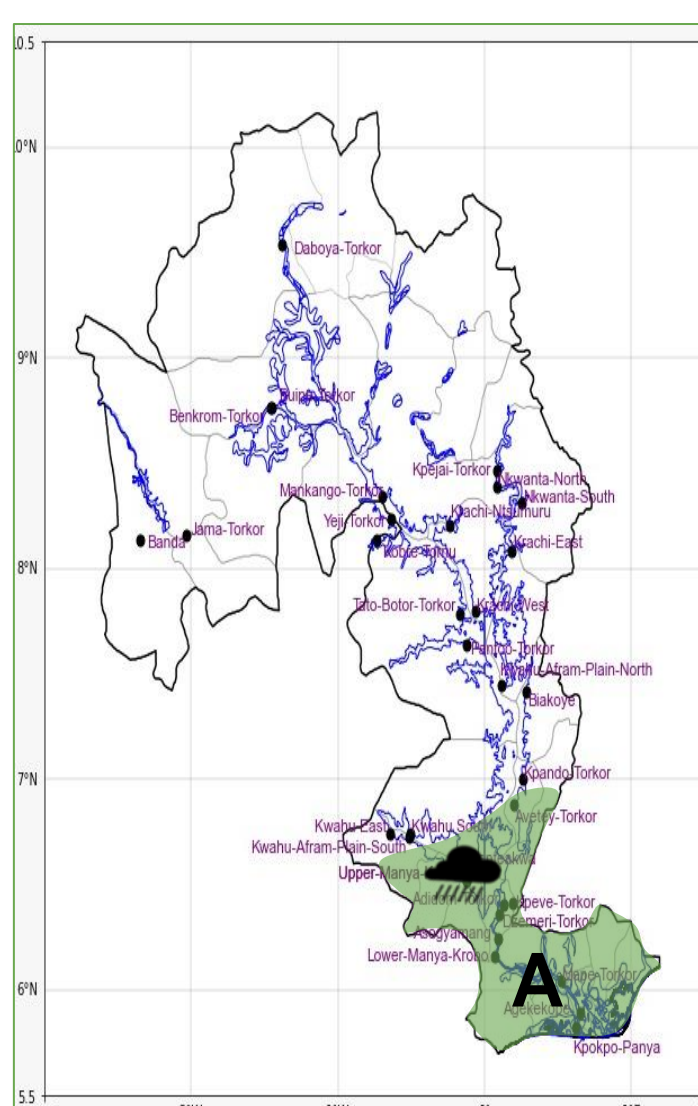
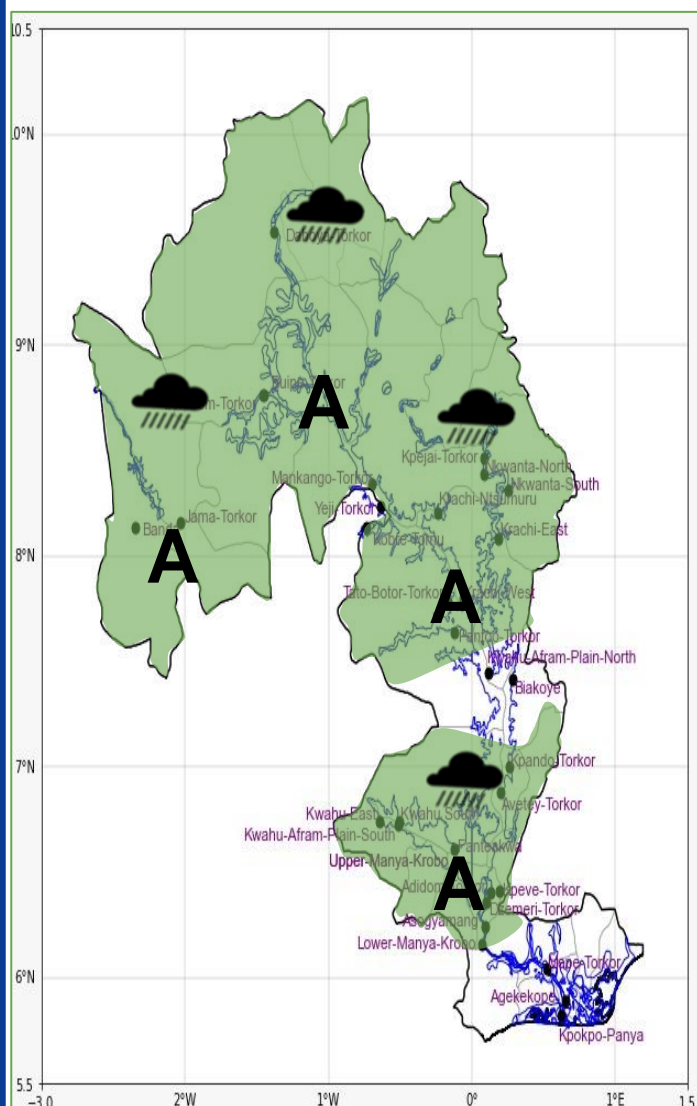


## INLAND WATER IMPACT-BASED FORECAST

### WEATHER SUMMARY

Cloudy weather conditions are expected to dominate the lake and its surroundings tonight, with isolated light to moderate rain across the lake and nearby communities. The lake area will experience variable cloud cover in the morning, with light intermittent rain over isolated areas in the southern portion of the lake.

EVENING (04/12/2025)	MORNING (05/12/2025)	AFTERNOON (05/12/2025)
----------------------	----------------------	------------------------



Date
04/12/2025
Time Issued
4:00 PM
Valid From
06:00 PM
Nowcasting Risk
Take Action
Be aware
Low risk
No risk

Likelihood	Weather Forecast Risk Table		
	High (>60%)	G	H
	Medium (40%-60%)	D	E
	Low (<40%)	A	B
		Low	Medium
		High	
		Impact	

Time	Surface Wind	Visibility	Temperature
12 hours	S/SW 05 Max 19 kt	(4 – 10) km	(23 – 32) °C
24 hours	NE/SW 05 Max 18 kt	(5 – 10) km	(24 – 36) °C