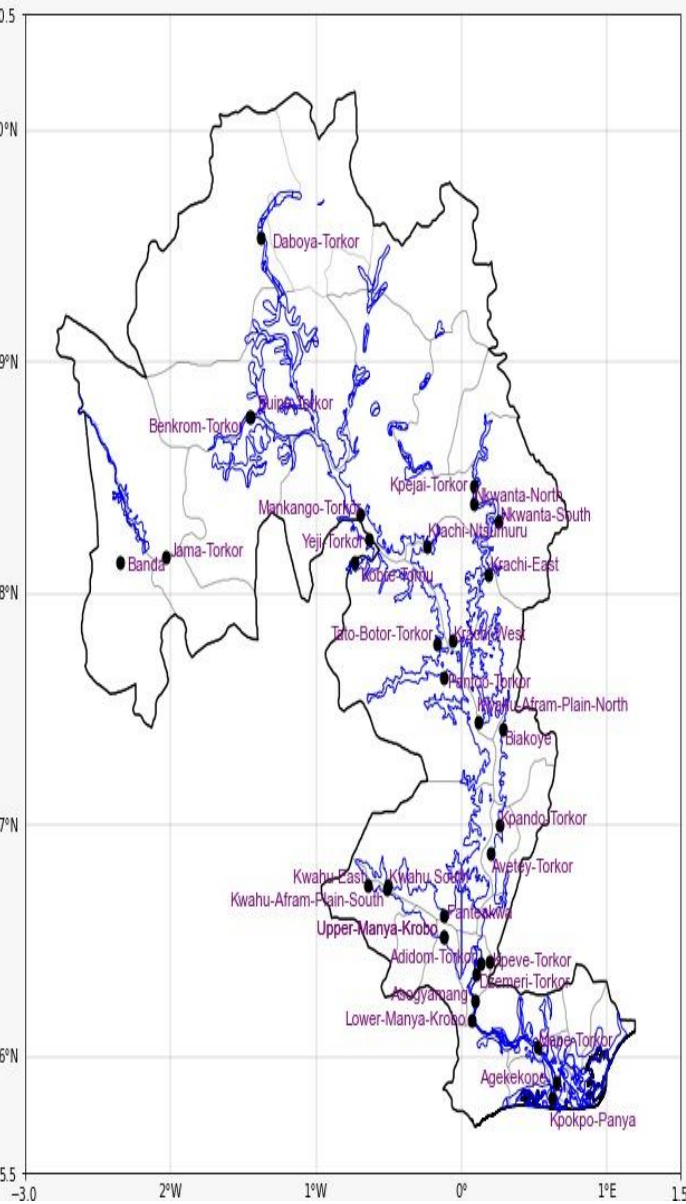
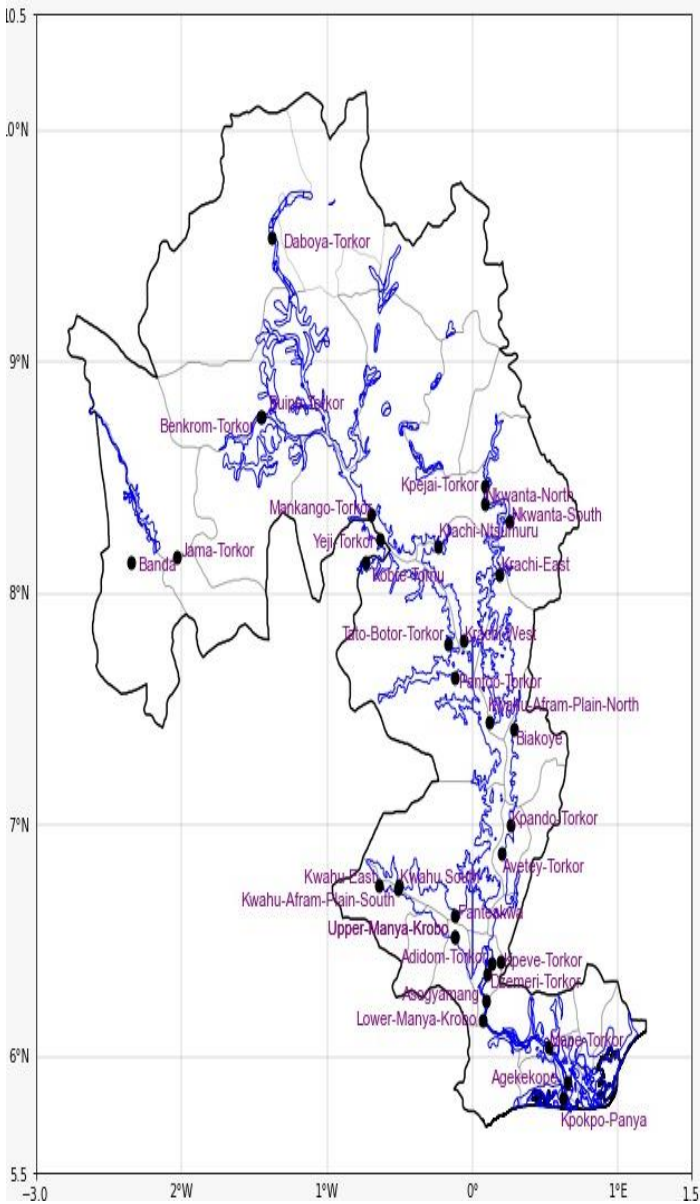
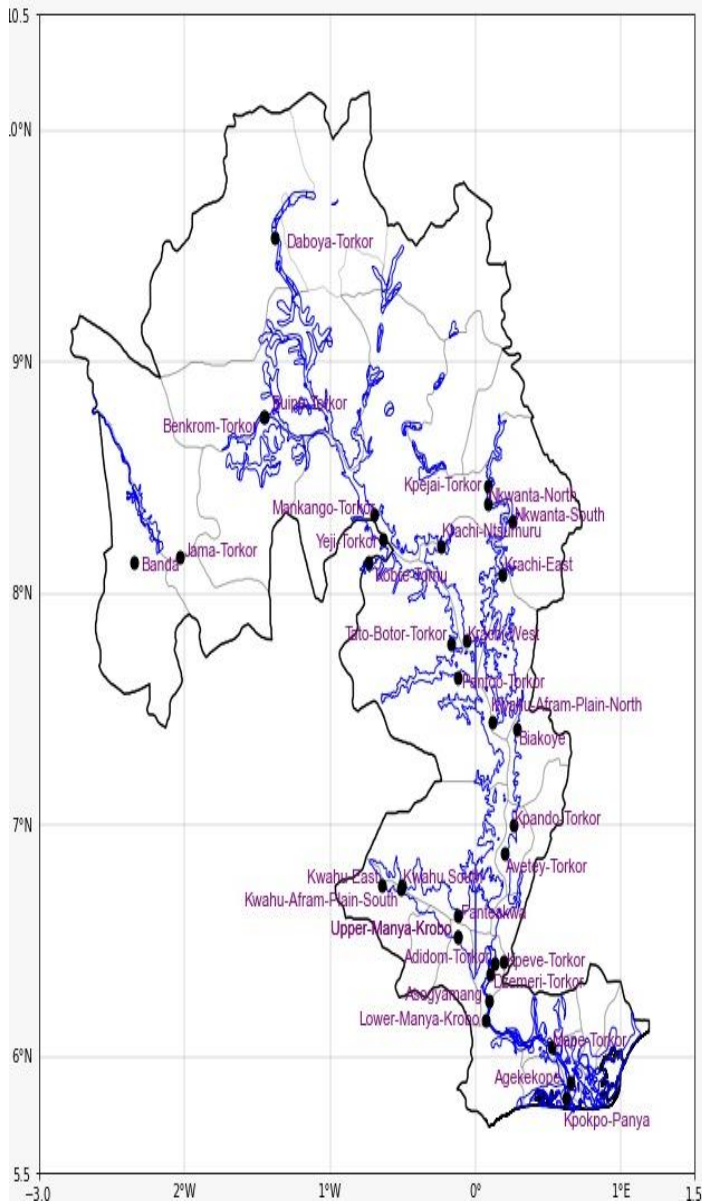




INLAND WATER IMPACT-BASED FORECAST  
WEATHER SUMMARY

Afternoon weather over the Volta Lake and its surroundings will be mostly sunny. As evening approaches, partly cloudy conditions are expected in most areas of the northern and southern halves of the lake.

AFTERNOON (07/12/2025)	EVENING (07/12/2025)	MORNING (08/12/2025)
------------------------	----------------------	----------------------



Date
07/12/2025
Time Issued
10:00 AM
Valid From
12:00 PM
Nowcasting Risk
Take Action
Be aware
Low risk
No risk

Likelihood	Weather Forecast Risk Table		
	High (>60%)	G	H
	Medium (40%-60%)	D	E
	Low (<40%)	A	B
		Low	Medium
		Impact	

Time	Surface Wind	Visibility	Temperature
12 hours	NE/SW 05 Max 20 kt	(5 – 10) km	(23 – 38) °C
24 hours	SW 05 Max 17 kt	(3 – 10) km	(23 – 38) °C