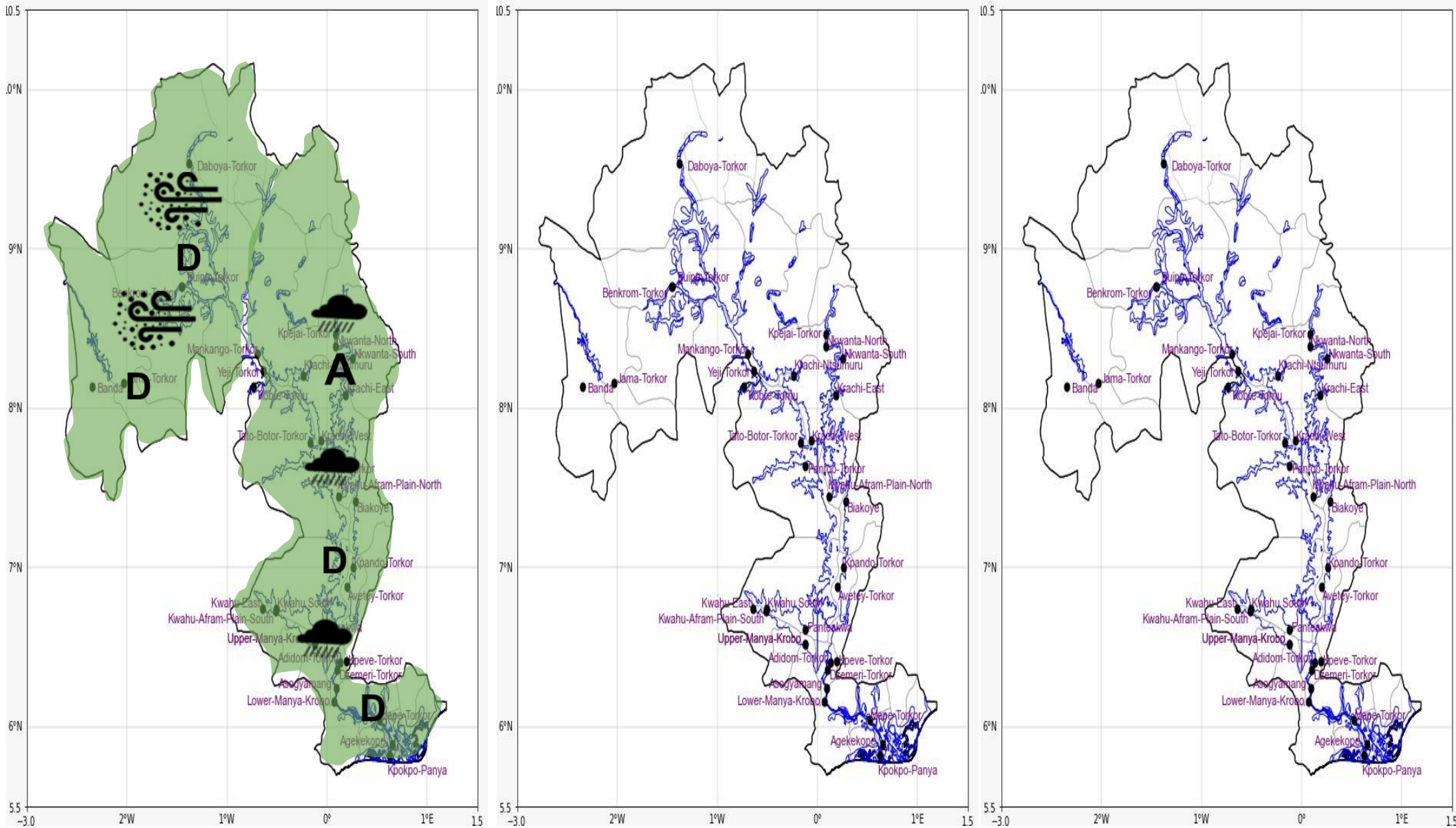




INLAND WATER IMPACT-BASED FORECAST
WEATHER SUMMARY

Mostly cloudy weather is anticipated for the central and southern areas around the lake, while the northwestern regions are likely to remain relatively dry. This afternoon into the evening, rain with varying intensities with possibly accompanied by thunderstorms, is forecasted for many areas around the lake..

AFTERNOON (08/12/2025)	EVENING (08/12/2025)	MORNING (09/12/2025)
------------------------	----------------------	----------------------



Date
08/12/2025
Time Issued
10:00 AM
Valid From
12:00 PM
Nowcasting Risk
Take Action
Be aware
Low risk
No risk

Likelihood	Weather Forecast Risk Table		
	High (>60%)	G	H
	Medium (40%-60%)	D	E
	Low (<40%)	A	B
		Low	Medium
		High	
		Impact	

Time	Surface Wind	Visibility	Temperature
12 hours	S/SE 05 Max 17kt	(5 – 10) km	(24 – 35) °C
24 hours	S/SW 05 Max 13 kt	(4 – 10) km	(23 – 33) °C