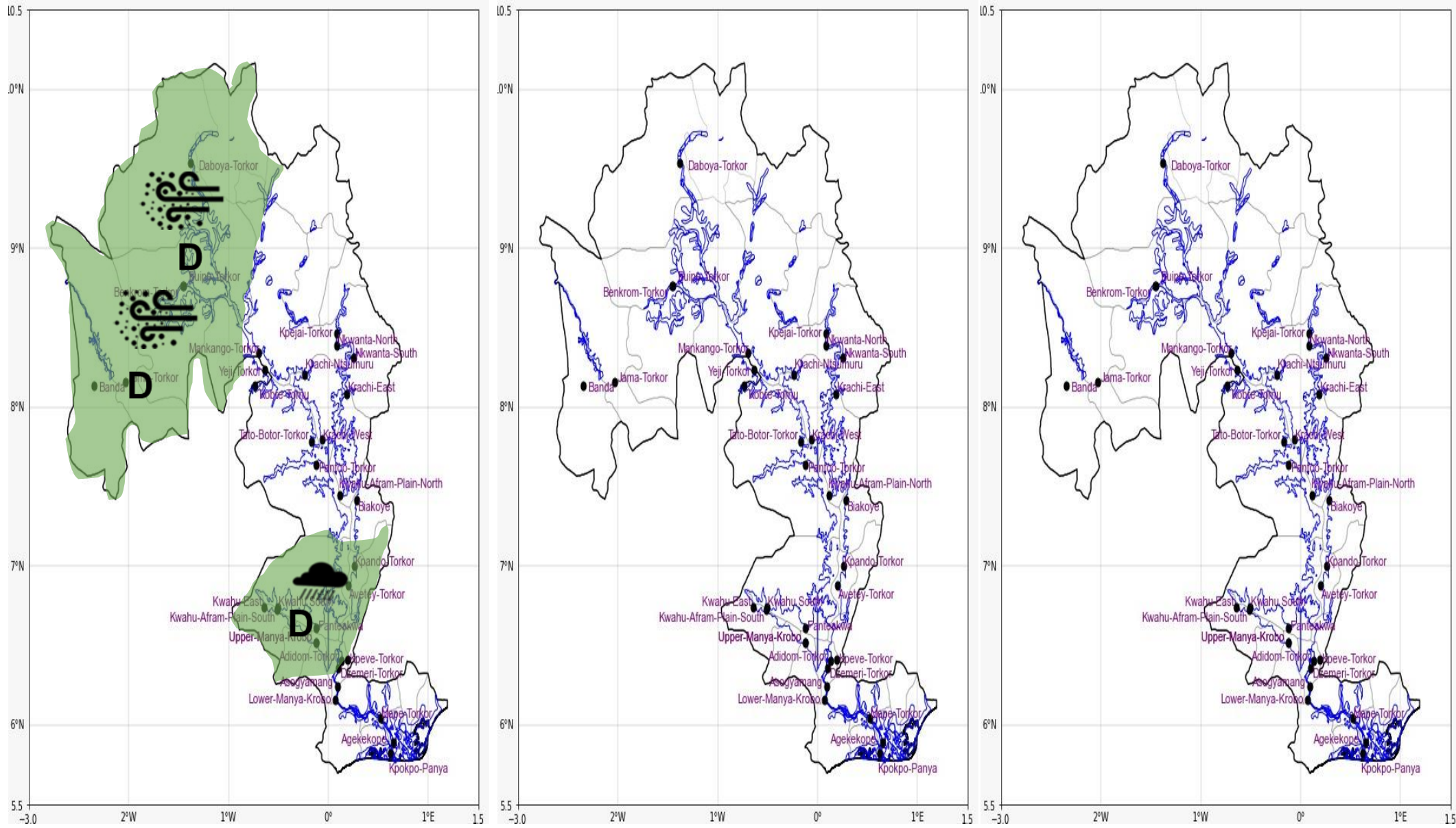




INLAND WATER IMPACT-BASED FORECAST  
WEATHER SUMMARY

Variable cloud cover is anticipated during the forecast period, with the northwestern areas expected to stay mostly dry and somewhat hazy. Sunshine is likely this afternoon; however, later in the day and into the evening, there is a 40% chance of isolated rain in the middle and southern regions around the lake and nearby areas.

AFTERNOON (09/12/2025)	EVENING (09/12/2025)	MORNING (10/12/2025)
------------------------	----------------------	----------------------



Date
09/12/2025
Time Issued
10:00 AM
Valid From
12:00 PM
Nowcasting Risk
Take Action
Be aware
Low risk
No risk

Likelihood	Weather Forecast Risk Table		
	High (>60%)	G	H
	Medium (40%-60%)	D	E
	Low (<40%)	A	B
		Low	Medium
		Impact	

Time	Surface Wind	Visibility	Temperature
12 hours	S/SE 05 Max 18kt	(5 – 10) km	(23 – 34) °C
24 hours	S/SW 05 Max 15 kt	(3 – 10) km	(23 – 33) °C